

Geography and  
Environment

UNIVERSITY OF  
**Southampton**

A full-page background image showing a fisherman in silhouette, pulling a large, circular fishing net. The net is filled with water and reflects the warm, golden light of a sunset. The fisherman is standing in shallow water, and the net is being pulled upwards, creating a large, curved shape. The sky is a mix of blue and orange, with some clouds visible. The overall mood is serene and evocative.

# TACKLING THE CHALLENGES OF OUR **CHANGING WORLD**

Geography and Environment  
Undergraduate Courses 2016

A hand in a black sleeve points at a wall covered in numerous colorful sticky notes of various colors (yellow, orange, blue, red, white). The notes are arranged in a grid-like pattern, some overlapping. The background is slightly blurred, showing a modern interior space with other people in the distance.

# SOUTHA

Third year BA Geography students conducting research in Berlin as part of their advanced fieldwork module. Previous destinations have included Barcelona and Geneva

With kind permission from the  
Topography of Terror Foundation, Berlin



---

**Reach your goals at Southampton by combining your ambition, your talent and our support.**

Choosing the right place to study is an important decision, with many factors to think about. Join us, an institution in the top one per cent of world universities† and a founding member of the Russell Group of research-intensive UK universities. At Southampton you are taught by world-leading academics on courses that are designed around you. We get you ready for the global jobs market, while giving you a great student experience.

Study with us and you'll join one of the UK's top 15\* geography departments. We rank fifth in the country for the quality of our research publications\*\* and our student satisfaction scores have increased year-on-year to 91 per cent. \*\*\*

---

# CHOOSE SOUTHAMPTON

## Contents

- 04 A global university
- 28 Course overview
- 30 Course information
- 34 Applying and funding
- 35 International students
- 36 Travel information
- 38 How to find us

†QS World University Ranking 2014/15

\*The Complete University Guide 2016 and the 2016 Guardian university league tables

\*\*Research Excellence Framework 2014

\*\*\*National Student Survey 2014

# CHOOSE SOUTHAMPTON: A GLOBAL UNIVERSITY

**The city of Southampton has a history of innovation and exploration. As a forward-thinking University, we uphold these values in our education and research; join us to forge your successful future.**

- ➔ Our students can study in 54 countries across the world
- ➔ Our 195,000 graduates are part of a network of professionals that covers 180 countries
- ➔ Our academics make a difference on every continent
- ➔ Our business, government and non-government organisation partners span the globe
- ➔ We are part of the Worldwide Universities Network, a collaboration of knowledge from around the world

## HOUSING WELFARE REFORM

Working with stakeholders from the charity sector and policy makers, Dr Eleanor Wilkinson is assessing the impact of recent UK housing welfare cuts on the lives of vulnerable people in Britain

## LEARNING IN THE FIELD

Overseas fieldwork can take place in a variety of destinations; Amsterdam, Paris, Picos de Europa (northern Spain), Mekong River Delta (south east Asia), Arolla Glacier (Switzerland)

We are an institution in the  
**TOP 1%**  
of global universities

## ELIMINATING RHODESIAN SLEEPING SICKNESS

Dr Nicola Wardrop is supporting the World Health Organization's efforts to eliminate this fatal parasitic disease by studying the spatial distributions of the illness in Uganda



## TECHNOLOGY IN GLACIERS

Professor Jane Hart and colleagues have developed sensors for glaciers in Iceland to help better understand the dynamics of glaciers and global warming

Our University of Southampton Malaysia Campus offers students the chance to gain a unique 'Southampton' education in Malaysia combined with two years in the UK

We have  
**322**  
partnerships in  
**54 countries**  
around the world



## ENVIRONMENTAL CHANGE IN CHINA

A research team led by Professor John Dearing has created a tool to help decision makers identify sustainable development choices in poor regional communities



## RURAL CLIMATE CHANGE

Dr Emma Tompkins' research shows how communities in Zanzibar adapt their livelihoods to cope with climate change and how this impacts on wider environmental goals



## STUDENT EXCHANGE

BSc Geography student Lewis Ford studied abroad at the University of Singapore in Southeast Asia

Study opportunities include: **Australia, Canada, China, Hong Kong, France, Germany and Holland**

 **Find out more**  
[www.southampton.ac.uk/global](http://www.southampton.ac.uk/global)





# WHAT'S YOUR **AMBITION?** TO STUDY THE IMPACT OF CLIMATE CHANGE ON RIVERS

**Eleanore Heasley**

BSc Geography, final year

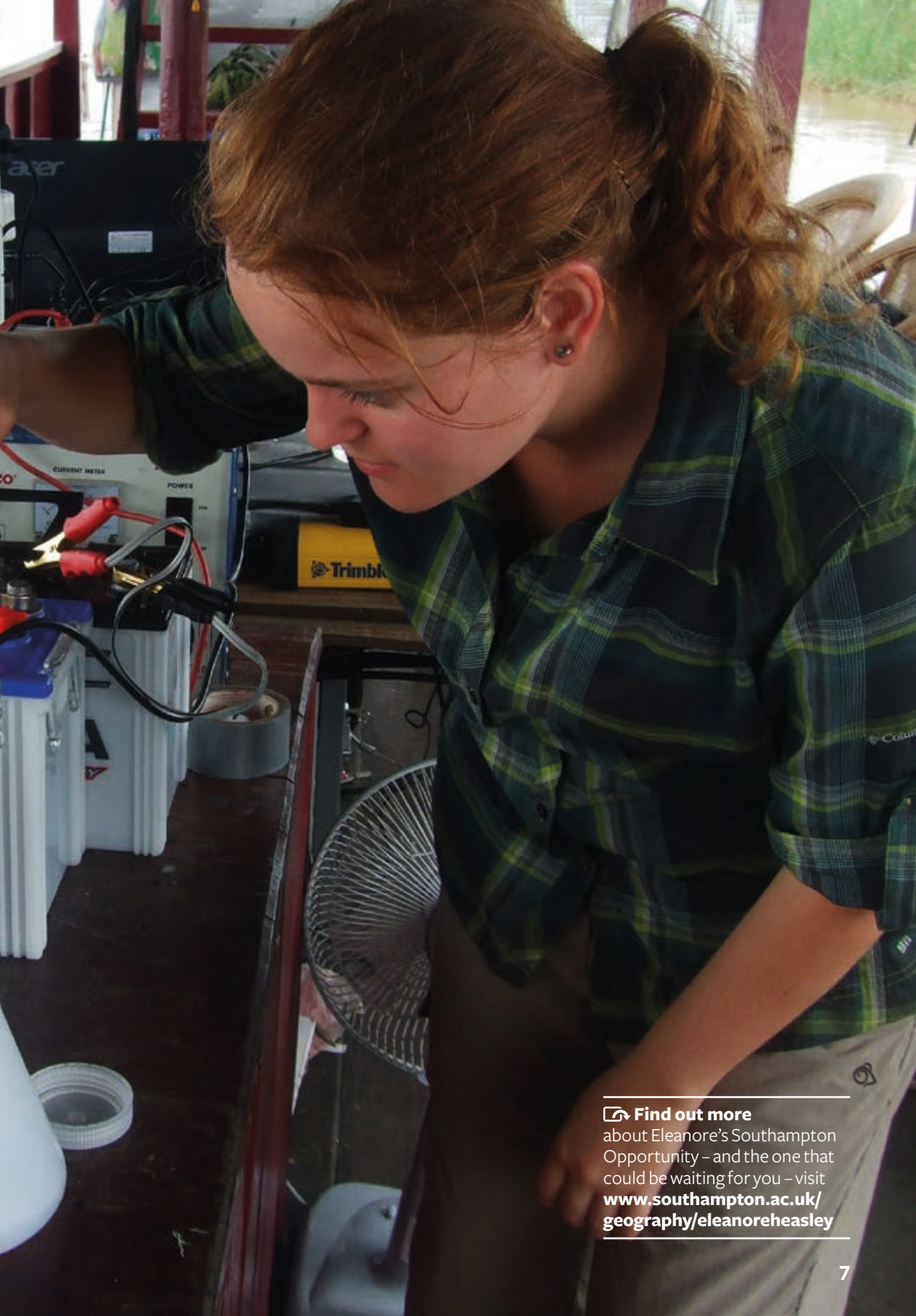
During a four-week trip to South East Asia Eleanore undertook regular transects on the Mekong. Her activities involved using specialist equipment to monitor river velocity and collect suspended sediment samples.


“I was really excited to join a research team in Cambodia studying the way climate fluctuations affect the transfer of sediment along the Mekong River. This was made possible by a Royal Geographical Society fieldwork bursary that my lecturer supported me to apply for.

“It was an amazing opportunity and has shaped everything I have done since – I have chosen every module available on rivers! The experience also helped me to get an internship with an environmental charity looking at freshwater quality.

“I’ve been accepted to do a PhD in environmental research and in future I’d love to work in river management.”

Filtering suspended sediment samples from the Mekong River



 **Find out more**  
about Eleanore's Southampton  
Opportunity – and the one that  
could be waiting for you – visit  
[www.southampton.ac.uk/  
geography/eleanoreheasley](http://www.southampton.ac.uk/geography/eleanoreheasley)



# CHOOSE SOUTHAMPTON: DESIGN YOUR OWN EDUCATION

## Your courses are developed and taught by world experts

Your course offers you breadth as well as depth

- ➔ Be independent and shape your course
- ➔ Attend lectures and seminars and access many lectures and learning resources on the move
- ➔ Enjoy a flexible course that is shaped by your interests and the needs of leading employers







# OUR PEOPLE

**Our people have a passion to change the world through their research and collaborations with global partners.**

- Our lecturers push the boundaries of knowledge
- Benefit from our research active academic team; their work informs your education
- We provide you with a rich curriculum with additional opportunities to broaden your multidisciplinary knowledge
- You are involved with important research as it unfolds
- We offer you a vibrant culture of partnership and collaboration in our academic community

PROFESSOR STEPHEN DARBY  
**HEAD OF GEOGRAPHY  
AND ENVIRONMENT**

Vice chair (Research) of the British Society for Geomorphology and Head of department leading a vibrant academic team, Stephen Darby's research interests include earth surface dynamics, morphodynamics of large, monsoon-affected rivers, modelling river dynamics, floodplain processes and landscape evolution modelling



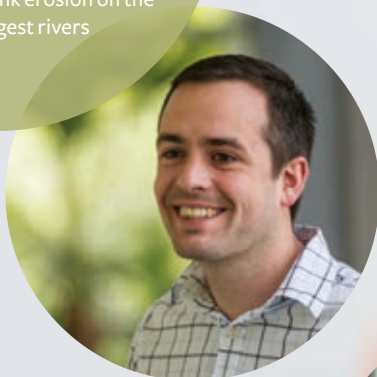
DR JULIAN LEYLAND  
**LECTURER IN  
PHYSICAL GEOGRAPHY**

Julian Leyland's research looks at river dynamics and landscape modelling. He is also a key member of the research team exploring bank erosion on the world's largest rivers



DR SALLY HAYWARD  
**DIRECTOR OF  
STUDENT SUPPORT**

An expert in periglacial geomorphology, Sally is also Director of Student support. Her award-winning dedication ensures students make a successful transition to university-level learning



DR SUZANNE REIMER  
**ASSISTANT PROFESSOR  
IN HUMAN GEOGRAPHY**

Suzanne Reimer is interested in aspects of design, creativity, knowledge and innovation, including the gendering of creativity and design labour. Previous research on commodity chains in the household furnishings industry directly informs her teaching on geographies of housing and home



DR BRIAN HRACS  
**LECTURER IN HUMAN  
GEOGRAPHY**

Brian's teaching is informed by his research into the way digital technologies and global competition are reshaping aspects of the creative economy, including the music industry



---

 Find out more  
[www.southampton.ac.uk/  
geography/people](http://www.southampton.ac.uk/geography/people)

---

# CHOOSE SOUTHAMPTON: CHANGE THE WORLD

## The next generation of satellite sensors

Geography and Environment researchers are helping the European Space Agency (ESA) to monitor key environmental markers. The ESA has initiated a programme to launch a series of satellites in 2015/16, called the Sentinel series, that will provide data to support the European Commission initiative under the Copernicus programme.

Dr Jadu Dash is leading a project to develop algorithms for two satellites to estimate the levels of chlorophyll in vegetation. The team is using data from computer models and airborne sensors, the results of which will inform a wide range of operational services such as agricultural productivity and food security, understanding carbon, water and nutrient cycles, forestry and environmental monitoring. You will have the opportunity to learn from Jadu about the relevance of these techniques on our Remote Sensing for Earth Observation module.

## COMBATting CLIMATE CHANGE

Our collaboration with the European Space Agency is helping scientists to monitor the health of the planet's ecosystems

## CARBON CAPTURE

Environmental researchers will be able to compare the productivity of vegetation with the amount of carbon being captured

## IMPROVED ACCURACY

New sensors will enable local-scale monitoring, giving a more comprehensive picture of vegetation chlorophyll levels





Photo credit:  
CNES, Spot images, ESA images

 **Find out more**  
[www.southampton.ac.uk/  
geography/researchfacilities](http://www.southampton.ac.uk/geography/researchfacilities)

# TEACHING & LEARNING

## **We offer you more than just a traditional learning environment.**

With access to virtual learning 24 hours a day, and the opportunity to design your own education by taking modules outside your chosen discipline, or studying abroad, Southampton provides a unique learning experience.








“I’ve enjoyed the choice of modules; you could do anything from climate change, to development and inequality in cities so it’s really interesting and you really get to shape the degree the way you want to.”

**Liam Harney**

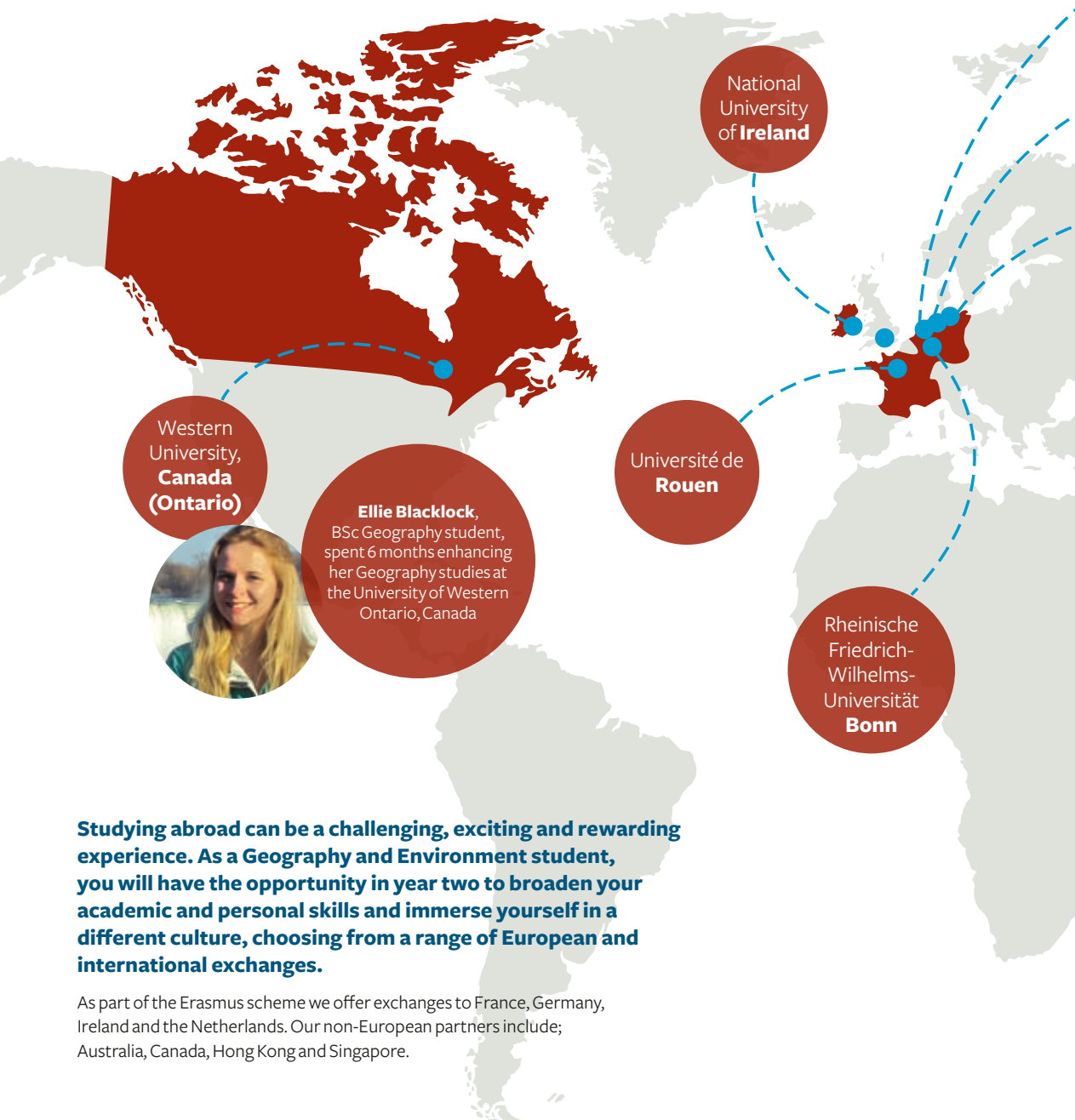
BA Geography 2013

---

 Find out more  
[www.southampton.ac.uk/flexible](http://www.southampton.ac.uk/flexible)

---

# CHOOSE SOUTHAMPTON: A WORLD OF OPPORTUNITIES



Western  
University,  
Canada  
(Ontario)



**Ellie Blacklock,**  
BSc Geography student,  
spent 6 months enhancing  
her Geography studies at  
the University of Western  
Ontario, Canada

National  
University  
of Ireland

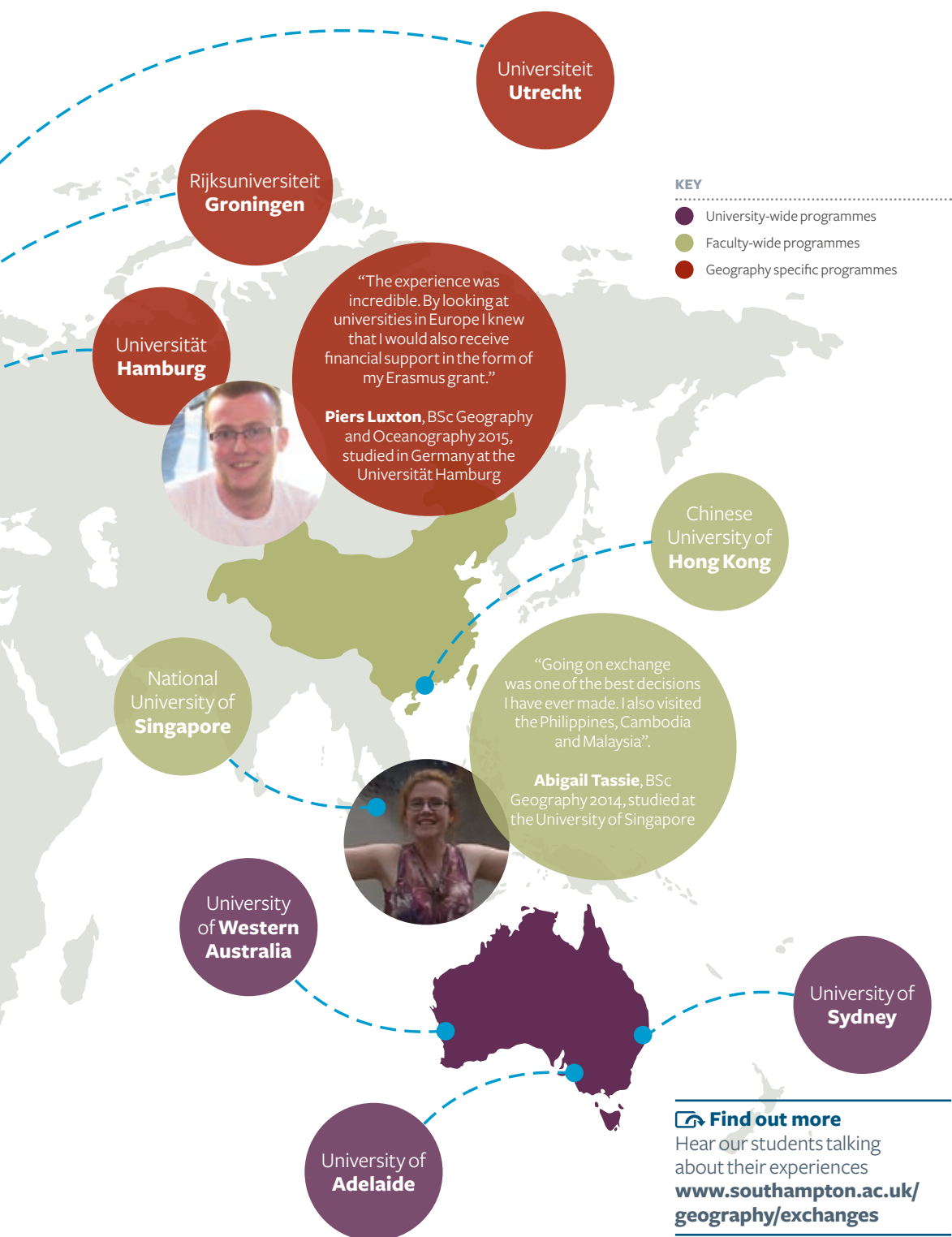
Université de  
Rouen

Rheinische  
Friedrich-  
Wilhelms-  
Universität  
Bonn

**Studying abroad can be a challenging, exciting and rewarding experience. As a Geography and Environment student, you will have the opportunity in year two to broaden your academic and personal skills and immerse yourself in a different culture, choosing from a range of European and international exchanges.**

As part of the Erasmus scheme we offer exchanges to France, Germany, Ireland and the Netherlands. Our non-European partners include; Australia, Canada, Hong Kong and Singapore.





# CHOOSE SOUTHAMPTON: CHANGE THE WORLD

**Our courses are informed by the research strengths of our academic team; these include cutting-edge areas of human geography.**

One example is our Experimental Geographies module, developed by social geographer, urban explorer and photographer Dr Bradley Garrett. Bradley's research is inspired by his fascination with hidden, overlooked and forgotten environments. A seasoned 'place-hacker', his books recount his experiences of urban exploration – the controversial practice of venturing into off-limits buildings and spaces. These expeditions have taken him from the depths of disused London underground stations to the top of the Shard building while it was still under construction. "All of my projects work to reveal, through experiential engagement, what is hidden from plain sight," says Bradley.

Bradley's pioneering third-year Experimental Geographies module gives students the opportunity to experience hidden spaces for themselves by exploring abandoned buildings and telling stories about these spatially marginalised places through audio, video or photography. The module also features guest lecturers from different creative perspectives, including psychogeographer Will Self and leading sound artists and filmmakers.



## INFLUENCING POLICY

Rethink abandoned spaces  
on the participative Experimental  
Geographies module

## GLOBAL RESEARCH

Visit Berlin, Amsterdam or  
Paris on a human geography  
field trip to gain historical and  
social perspectives on urban  
cityscapes


## EXPERT TEACHING

Our team of human geography  
academics have a range of  
expertise including labour  
markets, social justice and welfare,  
migration, and creative industries  
and the digital economy

Experimental Geographies intertwines theory and methodology and you will have the ability to submit course material in a range of critical and creative formats including video, audio and photography

Photo credit: Dr Jonathan Prior

---

 **Find out more**  
[www.southampton.ac.uk/  
geography/exgeog](http://www.southampton.ac.uk/geography/exgeog)

---



# YOUR STUDENT EXPERIENCE

**Our six campuses all offer a friendly, vibrant and diverse atmosphere for work and leisure.**

## Campuses

Highfield Campus caters for most of our academic courses. Incorporating the latest research and teaching facilities, it boasts new and refurbished student facilities such as SUSU, the University of Southampton Students' Union, and the Jubilee Sports Centre.

Avenue Campus houses a state-of-the-art purpose-built £3m Archaeology Building and is located on the edge of Southampton Common, a short walk from Highfield.

The University's collaboration with Lloyd's Register represents one of the largest business partnerships with any single university in the world. Our new £116 million Boldrewood Campus is the result of this partnership and is home to the Southampton Marine and Maritime Institute.

Southampton General Hospital is home to University Hospital Southampton NHS Foundation Trust and is a major centre for teaching and research in association with the University.

The National Oceanography Centre Southampton is our waterfront campus and is one of the world's leading research centres for the study of ocean and earth sciences.

Winchester School of Art is located 12 miles north of Southampton, in Winchester city centre. The campus provides purpose-designed studios and workshops, an extensive specialist library, Students' Union facilities, a café and a well-stocked art supplies shop.

Our branch campus for engineering is in EduCity, Iskandar in Malaysia and benefits from innovative world-class facilities for engineering and full access to the learning resources at our UK campuses. It offers undergraduate students the opportunity to study in a safe international environment.

## Social life

Run by students for students, SUSU, the University of Southampton Students' Union, offers a wide range of services and opportunities for you to get the most out of your free time.

- Experience Your Freshers' – a week full of activities to help you settle in
- Discover a new talent: try some of our 92 sports clubs from archery to Taekwondo
- Join one of our 218 societies from performing arts to politics
- Help local people: get involved in community volunteering projects and fundraising





03



04

You can socialise with friends in one of our bars or cafés on campus and in our halls of residences, as well as in the city of Southampton



02



05

- Socialise with friends in one of our bars or cafés on our campuses and in our halls of residences
- See high-profile acts, such as Pixie Lott and Greg James
- Catch a film in our 330-seat cinema
- Dance the night away in our large venue for big events and gigs
- Become a DJ or director at Surge Radio and SUSUtv
- Try out journalism for the *Wessex Scene* or *The Edge* magazines
- Get free and confidential advice from the Advice Centre
- Buy your essentials in The Shop

- We are here to take action on a wide range of issues that are important to you. For example, in response to student demand we recently set up our own letting agency that can help you find a place to live
- Have fun and give back with RAG (Raise and Give) which organises fundraising events to benefit local and national charities

### Sport

- Swim in our six-lane, 25-metre pool or use the varied fitness equipment across our four gyms
- Compete on over 20 grass and synthetic pitches for summer and winter sports
- SUSU caters for more than 90 sports clubs – more than any other UK university. From beginners to national competitors, we provide members with excellent sporting activities at a subsidised cost

For more information on our guarantee to you, visit [www.southampton.ac.uk/guarantee](http://www.southampton.ac.uk/guarantee)

### Find out more

University Residences  
**T:** +44 (0)23 8059 5959  
**E:** [accommodation@southampton.ac.uk](mailto:accommodation@southampton.ac.uk)  
**[www.southampton.ac.uk/accommodation](http://www.southampton.ac.uk/accommodation)**

- 01 National Oceanography Centre Southampton
- 02 The Shackleton building, home of Geography and Environment at Southampton
- 03 Cook and socialise
- 04 Oxford Street
- 05 Try Taekwondo

# ACCOMMODATION

**Get the best out of your student life: stay in one of our 6,500 student rooms in halls.**

You can choose from a range of room types that includes a new development of over 1,400 rooms in Southampton city centre.

Take advantage of our guaranteed offer\* of accommodation, for new first-year undergraduate students.

Live in either self-catered halls of residence with well-equipped communal kitchens, or part-catered accommodation where you enjoy the benefits of breakfast and evening meals throughout the week, plus some other meals at the weekend.

## The benefits for you

- A great student community
- Good value and competitive prices that include utility bills, internet and a unilink bus pass
- unilink connects all our Southampton halls sites with our Southampton campuses
- Facilities include common rooms, bars, launderettes, computer rooms, barbecue areas and much more
- Out of hours support and advice from the Residences Support Service
- 24hr security and CCTV on all sites

## \*Our guarantee to you

If you are a registered first-year undergraduate student new to the University, starting a full-time course, with no dependents, you will be guaranteed an offer of halls accommodation as long as you fulfil the full criteria of the guarantee, which includes applying before 1 August.

To uphold the guarantee, in years of exceptional demand we may offer accommodation in a twin shared room at the start of the academic year for a short, temporary period.

You also have the opportunity to apply for continuing years in halls. Though this cannot be guaranteed, we will always offer students accommodation if we have the availability.

For more information on our guarantee to you, visit [www.southampton.ac.uk/guarantee](http://www.southampton.ac.uk/guarantee)

## Private rented accommodation

Private rented accommodation is available in Southampton and Winchester as an alternative to halls.

We are a core partner in the Southampton Accreditation Scheme for Student Housing (SASSH), which only advertises properties where the landlord agrees their property complies with SASSH safety and quality standards.

## How to apply

Our guidance and applying for accommodation timeline make the process as easy for you as possible.

You can apply for your accommodation when you have received your formal offer of study with your student identification number. Register your details to apply online at [www.onlineaccommodation.soton.ac.uk](http://www.onlineaccommodation.soton.ac.uk)

### JUNE 2016

Allocation and offer of rooms starts for deferred students and students with unconditional offers, who have applied for accommodation before 31 May 2016

### JANUARY/ FEBRUARY 2016

Accommodation application opens and goes live online

### 1 AUGUST 2016

New students must have applied for accommodation before this date

### MIDDLE OF SEPTEMBER 2016

Allocation of rooms completed

## APPLICATION TIMELINE

### MIDDLE OF AUGUST 2016

After A level results, allocation of rooms to all students begins

### 19–20 SEPTEMBER 2016

Moving in weekend!





01



02

Our halls of residence sites have a great community feel; facilities range from common rooms, bars and launderettes to computer rooms and barbecue areas



03

- 01 Green and spacious gardens
- 02 Internet connections in all rooms
- 03 Plenty of social and outdoor spaces
- 04 Excellent facilities

04

 **Find out more**  
[www.southampton.ac.uk/ugp/accommodation](http://www.southampton.ac.uk/ugp/accommodation)

# CHOOSE SOUTHAMPTON: SHAPE YOUR FUTURE

## A degree at Southampton opens doors for career opportunities

### Southampton fast-tracks your ambitions:

- ➔ We prepare you for future challenges not yet imagined and jobs not yet thought of
- ➔ We are among the top 20 UK universities targeted by the largest number of top 100 graduate recruiters\*
- ➔ In the most recent Destinations of Leavers from Higher Education statistics 94 per cent of graduates whose destinations were known were in employment and/or further study
- ➔ We are one of the top 30 UK universities for graduate starting salaries\*\*

### We give you the opportunity to:

- ➔ Gather evidence of your achievements through our programme of personal development to complement your academic study
- ➔ Network with top employers at our careers events
- ➔ Build your entrepreneurial skills by engaging with our Student Enterprise programme
- ➔ Get advice from our graduates about future careers
- ➔ Specialise further with one of our postgraduate courses and gain a more in-depth knowledge of your subject to realise your ambitions
- ➔ Connect with a mentor from your target career path via our Insider Mentoring Programme
- ➔ Acquire the key skills built into our module design and assessment such as project management, team-working, communication skills and strategic thinking

### Take advantage of our exciting postgraduate opportunities

- ➔ Deepen your knowledge and boost your employability with one of our innovative masters courses
- ➔ Our new MSc Sustainability addresses the critical global sustainability challenges facing developed and developing countries
- ➔ Other taught masters programmes include the MSc Applied Geographical Systems and Remote Sensing, which focuses on real-world problems in areas such as public health and environmental management

### Our graduates land jobs at high-profile organisations such as:

Ministry of Defence  
Deloitte  
Ernst & Young  
ITV  
JP Morgan  
KPMG  
Net-a-Porter  
Office for National Statistics  
Ordnance Survey  
Royal Air Force  
Royal Horticultural Society  
Singapore Land Authority  
Thomson Reuters

\* High Fliers Research

\*\* The Sunday Times University Guide 2014

Specialise further with a postgraduate degree

Advice from graduates

Personal development programme

## YOUR SOUTHAMPTON OPPORTUNITY

Network with top employers

Mentoring

Careers events

Volunteering

Key skills designed into modules



### Find out more

To learn how your Southampton Opportunity can get you ready for employment, visit [www.southampton.ac.uk/dreamcv](http://www.southampton.ac.uk/dreamcv)



# CHOOSE SOUTHAMPTON: CHANGE THE WORLD

## Apply your knowledge in the field

Fieldwork is one of the most valuable and exciting elements of a geography degree. Day trips and residential courses in the UK and abroad enable you to put your knowledge into practice and develop your research skills.

Whether exploring stream dynamics, investigating the urban environment of a European city or studying glacial landscapes, our field trips offer a wide range of research topics with which you can actively engage. They are also a great way of getting to know your peers and academic staff.

Recent overseas fieldwork locations include Amsterdam, Paris, Barcelona, the Swiss Alps, Tenerife and the Picos de Europa in northern Spain. The compulsory field courses in years one and two are funded by the University, so you'll only need to cover incidental expenses during these trips.

An exciting addition to our residential fieldcourses is our new integrated module *Water, People and Environment* involving group project work on the Mekong River, Cambodia.

Considering how river bank erosion affects the lives of those living along the Mekong is just one of the many issues explored in our *Water, People and Environment* module





## FIRST-YEAR FIELD COURSES

Our UK-based trips introduce you to a range of general techniques

## IN YEARS TWO & THREE

Based overseas, you will develop more focused techniques tailored to your chosen geography degree

## THEORY INTO PRACTICE

Apply your learning and gain invaluable technical and hands-on expertise

---

 Find out more  
[www.southampton.ac.uk/  
geography/fieldwork](http://www.southampton.ac.uk/geography/fieldwork)

---



# COURSE OVERVIEW

## Choose Southampton

- ➔ Flexible, interdisciplinary programmes with research projects in year three
- ➔ Overall student satisfaction is at 91%, rising for the 4th consecutive year (NSS 2014)
- ➔ Ranked 13th in The Guardian university league tables 2016
- ➔ Exciting fieldwork opportunities in Europe and South East Asia allow you to apply your knowledge in the field
- ➔ Outstanding academic team and world-class facilities
- ➔ International exchange opportunities in Europe, Canada, Singapore and Australia

**Top  
5**

in the UK for  
research outputs  
(REF, 2014)

Our research is  
making an impact on all

**7**

continents of  
the world

Firmly established  
and well respected, we  
have taught more than

**4,000**

students since our  
inception in 1914

Our terrestrial laser scanners  
create high-resolution models  
of the Earth's surface



## Our Geography programmes use cutting-edge technology and approaches to combine theory-based learning with practical field and project work.

---

### Course structure

Our courses are designed to give you a firm grounding in key areas of geography and the flexibility to follow your interests.

In your first year you will study core modules and develop your statistical and computing skills. You'll also undertake UK-based fieldwork. Because the BSc and BA courses share core modules in year one, it's easy to move from one to the other if you change your mind about the path you want to take.

Your choice of modules expands as you progress through your degree so you'll have time to develop your interests before deciding which areas to study in more detail. Integrated modules enable you to study topics across the breadth of the discipline and you'll also have the opportunity to take modules in related subjects such as oceanography, sociology and psychology.

### Field trips & exchanges

In year two, one of your modules will include a one-week field course abroad. Recent destinations have included Amerstand, Paris and Tenerife. The cost of this compulsory trip is included in your course fees. In year three there are optional overseas field courses, for example to Cambodia, the Swiss Alps or Berlin.

If you're interested in studying overseas for a longer period (typically a semester), you could take advantage of exchange opportunities with our partner institutions in Australia, Canada, Hong Kong, Singapore, France, Germany, Ireland or the Netherlands.

---

### How will you learn?

As well as lectures, seminars and supervision, we use a range of innovative learning methods such as fieldwork, laboratory study, excavations, private and public sector placements and group projects, all of which are supported by virtual learning environments. As well as gaining an in-depth knowledge of your subject, you'll develop essential transferable skills, such as teamwork and project management, that will enhance your employability.

Assessment methods will depend on the modules you choose, but are likely to include essays and reports, fieldwork reports, oral presentations, practical exercises, research posters and written examinations.

Concepts of sustainability are integral to our courses, enabling our students to become globally responsible citizens with an understanding of human, economic and natural resources and needs.

---

### Facilities

You'll have access to specialist geography facilities, including:

- a purpose-built teaching laboratory for palaeoenvironmental and geomorphological analysis
- a dedicated geo-computational facility with state-of-the-art remote sensing equipment
- Geographic information systems (GIS) programmes for large-volume data processing and modelling

---

### Research project

The final-year research project will give you the opportunity to carry out a significant piece of independent research on a topic of your choice, usually through fieldwork or document-based research. Preliminary work and data collection begins towards the end of year two and you will develop the project over the following months, submitting your report before Easter in the final year. Your supervisor will give you regular support and guidance throughout the project to help you stay on track.

---

### Student support

We aim to give you all the support you need to realise your academic potential. One-to-one meetings with your personal tutor will give you the chance to raise any course-related issues or queries. Your tutor can also help you with personal issues, or you can see a student support manager if you need to talk something through.

---

 **Further information**  
[www.southampton.ac.uk/  
geography/ugprogrammes](http://www.southampton.ac.uk/geography/ugprogrammes)

**T:** +44 (0)23 8059 3760

**E:** [ugapply.fshs@southampton.ac.uk](mailto:ugapply.fshs@southampton.ac.uk)

---

**UCAS Code:** L700

**Start date:** September

**Duration:** three years

**Fees:** [www.southampton.ac.uk/fees](http://www.southampton.ac.uk/fees)

**Intake:** 180

**Average applicants per place:** 5

**Language requirements:** 6.5, with minimum of 5.5 in each component, or equivalent

**Selection process:** UCAS application

For typical entry requirements, please visit [www.southampton.ac.uk/entryreq](http://www.southampton.ac.uk/entryreq)



“I gained real-world skills that made me stand out to employers. I now manage 17 Enactus teams across the south of England.”

**Mike Austin**

BA Geography, 2012;  
Programme Manager, Enactus

## Find out more

**T:** +44 (0)23 8059 3760

**E:** [ugapply.fshs@southampton.ac.uk](mailto:ugapply.fshs@southampton.ac.uk)

**For further information and course modules**  
[www.southampton.ac.uk/geography/l700](http://www.southampton.ac.uk/geography/l700)

# BA GEOGRAPHY

**Gain a thorough grounding in human geography research approaches and choose from a range of modules exploring the cultural and socioeconomic factors that influence the interaction between people and the environment.**

## Course content

In your first year, you will gain a grounding in both human and physical geography and you will attend a local one-week field course, exploring the socio-economic landscapes of Southampton and their connection to the physical environment.

Year two involves a balance of core and optional modules. You will attend a specialist field trip to study the urban landscape of a European city. The individual research project in years two and three forms a major part of the degree programme. Involving personal fieldwork or documentary research in the UK or abroad, the project enables you to pursue your own particular interests in depth.

Year three addresses advanced, cutting-edge issues in geography, while the field option explores the production of urban space in 20th century Europe.

## Programme structure

### Year one | Core modules include

- The Earth System
- Geomorphological Processes
- Geographical, Quantitative and Field Skills
- Society, Culture and Space
- Dangerous World

### Year two | Core modules include

- Researching Human Geography
- Introductory Geographic Information Systems

- Practising Human Geographical Research (field course)

### Typical optional modules

- Advanced GIS
- Cultural Geographies
- Economic Geography
- Geographies of Wellbeing
- Global Climate Change: Science, Impacts and Policy

### Year three | Core modules

- Research project

### Typical optional modules

- Advanced Human Geography (field course)
- Migration and Development
- Geographies of Health and Health Care
- Experimental Geographies
- Geographies of Social Justice, Welfare and Rights
- Ambassadors Scheme for Geographers
- The Creative Economy
- Geographies of Housing and Home
- Geographies of Nature

## Career opportunities

Our graduates are highly sought after by employers and work in a diverse range of fields, including financial services, the retail sector, management, marketing, local government, public policy, the civil service, the BBC, education and the voluntary sector.

# BSc GEOGRAPHY

## Key information

**UCAS Code:** F800

**Start date:** September

**Duration:** three years

**Fees:** [www.southampton.ac.uk/fees](http://www.southampton.ac.uk/fees)

**Intake:** 180

**Average applicants per place:** 5

**Language requirements:** 6.5, with minimum of 5.5 in each component, or equivalent

**Selection process:** UCAS application

For typical entry requirements, please visit [www.southampton.ac.uk/entryreq](http://www.southampton.ac.uk/entryreq)

**This programme is designed for students interested in the physical and natural science aspects of geography. You'll have the opportunity to study a range of environments and practise a variety of monitoring and research techniques.**

### Course content

You will develop a broad understanding of both physical and human geography during your first year and take part in a local one-week field course, exploring the vegetation and stream dynamics of the New Forest.

Years two and three focus on physical geography with a combination of core and option modules in year two. You will participate in a field course where you will take part in small-group projects. Recent destinations have included Tenerife or the Picos de Europa, northern Spain.

You will undertake an individual research project in years two and three. In year three you will address advanced, cutting-edge issues in geography. The field option offers research in Arolla, Switzerland over 10 days with access to mountain streams, glaciers and alpine landscapes.

### Programme structure

#### Year one | Core modules include

- The Earth System
- Geomorphological Processes
- Geographical, Quantitative and Field Skills
- Society, Culture and Space
- Dangerous World

#### Year two | Core modules include

- Environmental Monitoring Techniques
- Remote Sensing for Earth Observation

- Research Design, Methods and Techniques in Physical Geography

#### Typical optional modules

- Quaternary Environmental Change
- Drainage Basin Geomorphology
- Global Climate Change
- Advanced GIS

#### Year three | Core modules

- Research project

#### Typical optional modules

- Palaeoecology and Landscape Change
- Coastal Geomorphology
- Arctic and Alpine Geomorphology
- River Basin Management
- Ambassadors Scheme for Geographers
- Glaciers and Glaciation
- Geographies of Nature
- Holocene Environmental Change in the Mediterranean
- Aeolian Processes and Geomorphic Modelling

### Career opportunities

Our graduates are always in demand for jobs directly related to geography such as environmental management and consultancy, urban and rural planning, GIS and economic development work.

They also work in a diverse range of fields beyond the discipline such as engineering, financial and management.



“I have really enjoyed the wide range of optional modules available on this course, which has enabled me to discover the aspects of Geography I am particularly passionate about.”

**Lydia Herbert**  
BSc Geography, 2015

## Find out more

**T:** +44 (0)23 8059 3760

**E:** [ugapply.fshs@southampton.ac.uk](mailto:ugapply.fshs@southampton.ac.uk)

 **For further information and course modules**  
[www.southampton.ac.uk/geography/f800](http://www.southampton.ac.uk/geography/f800)



## Key information

**UCAS Code:** FF68

**Start date:** September

**Duration:** three years

**Fees:** [www.southampton.ac.uk/fees](http://www.southampton.ac.uk/fees)

**Intake:** 180

**Average applicants per place:** 5

**Language requirements:** 6.5, with minimum of 5.5 in each component, or equivalent

**Selection process:** UCAS application

For typical entry requirements, please visit

[www.southampton.ac.uk/entryreq](http://www.southampton.ac.uk/entryreq)



“My joint degree allowed me to do 50 per cent of my modules at the National Oceanography Centre, giving me experience in the geological field.”

**Benjamin Lord**

BSc Geography with Geology, 2009;  
Geoscientist at NEOS GeoSolutions,  
Denver, Colorado

## Find out more

**T:** +44 (0)23 8059 3760

**E:** [ugapply.fshs@southampton.ac.uk](mailto:ugapply.fshs@southampton.ac.uk)

 **For further information and course modules**  
[www.southampton.ac.uk/geography/ff68](http://www.southampton.ac.uk/geography/ff68)

# BSc GEOGRAPHY WITH GEOLOGY

**This degree allows you to study across conventional disciplinary boundaries, developing your understanding of geology while focusing on key areas of physical geography. Geography will form about two thirds of your study and geology a third.**

## Course content

The focus is on physical geography and geology in year one, with advanced modules in years two and three covering aspects of mineral, petroleum and environmental geology. This will enhance your understanding in areas such as marine sediment transport and active plate tectonics.

You will attend a local one-week field course in year one. Recent destinations have included Tenerife or the Picos de Europa, northern Spain. These courses are funded by the University. The individual research project in years two and three forms a major part of the degree.

In year three you will address cutting-edge issues in geography and geology. The field option offers research in Arolla, Switzerland over 10 days with access to mountain streams, glaciers and alpine landscapes. You will take part in directed and independent small-group projects, write up and present your data.

## Programme structure

### Year one | Core modules include

- The Earth System
- Geomorphological Processes
- Dynamic Earth
- Earth and Ocean System

### Typical optional modules

- Society, Culture and Space

### Year two | Core modules include

- Environmental Monitoring Techniques
- Geohazards and Earth resources
- Introductory GIS
- Research Design, Methods and Techniques in Physical Geography (including overseas field course)

### Typical optional modules

- Igneous and Metamorphic Petrology
- Remote Sensing for Earth Observation

### Year three | Core modules

- Research project

### Typical optional modules

- Environmental Geology
- Volcanic and Mantle Processes
- Shelf Seas and Shelf Edge Dynamics
- Zooplankton Ecology and Processes
- Coastal Sediment Dynamics
- Global Tectonics

## Career opportunities

Geography and Geology graduates are in demand for jobs related to their degree including environmental and geotechnical surveying, hazard management, oil and mineral exploration, GIS and environmental consultancy.

# BSc GEOGRAPHY WITH OCEANOGRAPHY

As well as studying physical geography in depth you can select modules from one of several oceanography pathways depending on your area of interest. Geography will form about two thirds of your study and oceanography a third.

## Course content

You'll be able to select a pathway that interests you most from: Physical Oceanography; Biological Oceanography; Chemistry/Palaeoclimate; Sedimentary Oceanography. The modular design of the degree means you can study a range of scientific disciplines and specialise in areas that interest you.

You will attend a local one-week field course in year one. Recent year two field course destinations have included Tenerife or the Picos de Europa, northern Spain. These courses are funded by the University. The individual research project in years two and three forms a major part of the degree.

The field option in year three offers research in Arolla, Switzerland with access to mountain streams, glaciers and alpine landscapes. You will take part in directed and independent small-group projects, write up and present your data..

## Programme structure

### Year one | Core modules include

- The Earth System
- Geomorphological Processes
- Earth and Ocean System
- Geographical, Quantitative and Field Skills
- Dangerous World

### Typical optional modules

- Earth Materials

- Physical Oceanography
- Introduction to Ocean Biogeochemistry
- Introduction to Marine Ecology

### Year two | Core modules include

- Research Design, Methods and Techniques in Physical Geography

### Typical optional modules

- Coastal and Estuarine Oceanography
- Global Climate Change
- Physical Oceanography

### Year three | Core modules

- Research project

### Typical optional modules

- Microfossils Environments and Time
- Zooplankton Ecology and Processes
- Large-scale Ocean Processes
- Arolla Field Course: Geographical Research in Alpine Environments
- Mediterranean Environments and Culture
- Aquatic Systems and Environmental Change

## Career opportunities

Geography and Oceanography graduates are in demand for jobs related to their degree including hydrology and water resources, coastal engineering, environmental resource management, scientists at government agencies and conservation bodies, GIS and environmental consultancy.

## Key information

**UCAS Code:** F8F7

**Start date:** September

**Duration:** three years

**Fees:** [www.southampton.ac.uk/fees](http://www.southampton.ac.uk/fees)

**Intake:** 180

**Average applicants per place:** 5

**Language requirements:** 6.5, with minimum of 5.5 in each component, or equivalent

**Selection process:** UCAS application

For typical entry requirements, please visit [www.southampton.ac.uk/entryreq](http://www.southampton.ac.uk/entryreq)



“What I enjoyed most about studying Geography at Southampton were the fieldtrips and the relationships that you build up with experts in the field.”

**Amelia Paszkowski**

BSc Geography with Oceanography, 2014

## Find out more

**T:** +44 (0)23 8059 3760

**E:** [ugapply.fshs@southampton.ac.uk](mailto:ugapply.fshs@southampton.ac.uk)

 **For further information and course modules**  
[www.southampton.ac.uk/geography/f8f7](http://www.southampton.ac.uk/geography/f8f7)

# APPLYING AND FUNDING

---

**We realise that going to university is a significant investment, so we'll ensure you have all the information you need to make an informed decision.**

---

## General entry requirements

To apply for undergraduate study you must satisfy our general entry requirements and any specific requirements of your chosen programme. Typical entry requirements for applicants with GCE A levels can be found online.

## How to apply

Apply online at [www.ucas.com](http://www.ucas.com) the website for the Universities and Colleges Admissions Service (UCAS). Our UCAS code name is SOTON and our number is S27. All students should apply between 1 September 2015 and 15 January 2016. If you are an international student from outside the UK or EU, we may consider your application up until 30 June 2016. However, we cannot guarantee there will be vacancies on our courses after the January deadline. Further information may be found in our Admissions Policy at [www.southampton.ac.uk/admissions-policy](http://www.southampton.ac.uk/admissions-policy)

## Tuition fees and funding

The University will set fees for 2016/17 when the government establishes limits for tuition fees. For 2015/16, the University set the tuition fee for UK students at £9,000 and we offer a large number of generous fee waivers and bursaries for eligible students.

For UK students from lower income families, these financial packages will be based on household income supplied to us by the Student Loans Company.

Your tuition fee may cover compulsory course costs, such as field trips and

laboratory clothing; however a contribution may be necessary towards certain elements. Please check with the Admissions team for more details.

Visit our website for the latest information on tuition fees before you submit your UCAS form for entry in the 2016/17 academic year. Students who have applied for a deferred place in 2015/16 will be eligible for the 2016/17 tuition fees and support.

If you are a UK student you can apply for loans to help pay for both fees and maintenance. For more details, visit [www.southampton.ac.uk/money](http://www.southampton.ac.uk/money)

## Channel Islands/ Isle of Man student fees

Fees are set by the islands' governments and UK universities are notified of the levels in the spring prior to the academic session in which students commence their programme of study.

## International student fees for 2016

All programmes (including Foundation Year) in Arts, Humanities, Law, Social Sciences and Mathematics: £15,390 per year. All programmes (including Foundation Year) in Engineering, Science, first- and second-year Medicine, Health and Life Sciences: £18,910 per year. Third-, fourth- and fifth-year Medicine: £40,230 per year.

## Fixed fees

International students commencing their programme of study in 2016, will pay the same fixed fee for each year of their programme, with the exception of programmes where a combination of clinical and non-clinical fees apply.

In these instances, the non-clinical fixed fee will apply for years one and two, and the clinical fixed fee will apply for the remainder of the programme.

## Scholarships and bursaries

We offer a variety of scholarships and progression awards to the most talented students across our subject areas. For full eligibility criteria and up-to-date information, visit [www.southampton.ac.uk/scholarships](http://www.southampton.ac.uk/scholarships)

We also offer a generous range of bursaries designed to help UK undergraduate students in the most financial need. For more details and up-to-date information, visit [www.southampton.ac.uk/bursaries](http://www.southampton.ac.uk/bursaries)

## Geography visits

If you receive an offer you will be invited to attend a geography visit day (for offer holders). These provide an opportunity to learn more about our programmes and the learning environment here at Southampton. The schedule normally consists of a subject talk, 'taster' sessions in both human and physical geography, the opportunity to discuss your chosen course in small groups with academic staff, a chance to meet current students and an optional tour of a hall of residence. Visit days run from February through to March.

---

 **Find out more**  
[www.southampton.ac.uk/fees](http://www.southampton.ac.uk/fees)

**T:** +44 (0)23 8059 4732

**E:** [admissions@southampton.ac.uk](mailto:admissions@southampton.ac.uk)

---



# INTERNATIONAL STUDENTS

---

**Join us and students from more than 135 different countries at Southampton.**

---

Living and studying in a different country has its own unique challenges. We make student entry straightforward, offer attractive scholarships to eligible applicants, help you settle into your new life and advise you on all aspects of living in the UK.

Our network of services and advisors ensure that your studies and life at Southampton are as productive and stress-free as possible.

## **International Office**

Staff from our International Office attend educational exhibitions around the world as well as making numerous visits overseas and to colleges in the UK. If you are unable to visit us in Southampton, make sure you book an appointment to meet us at one of the exhibitions or join us on a virtual open day.

You will find a quick introduction to the University on our website, which is available in other languages. You can also view web pages dedicated to 50 specific countries.

To join us on a virtual open day, visit [www.southampton.ac.uk/virtualopen day](http://www.southampton.ac.uk/virtualopen day)

## **Welcome Programme**

In September each year, we arrange the Welcome Programme, which helps you settle into life here. The week includes general events to introduce you to our facilities, subject-specific events to begin your academic induction and a range of social and cultural activities.

During the week, you will meet other undergraduate students and explore the University and the city, so that you know where to worship, relax and shop. You will also meet current international students who will be able to give you good advice.

## **Meet and Greet**

The Meet and Greet Service from London Heathrow Airport is provided free of charge and is designed to get you to the University in time for the Welcome Programme. You can register for both the service and the Welcome Programme from July on our website.

## **Visas**

Before you join us, find out about the UK's immigration procedures. Do this well in advance of your arrival in the UK. Our website provides information on student visas, police registration, working in the UK and has links to other useful websites.

For more information, visit [www.southampton.ac.uk/visa](http://www.southampton.ac.uk/visa)


## **International scholarships**

We offer a number of subject-specific scholarships and bursaries to international students. These are based on international merit and vary depending on the subject.

## **English language requirements**

If English is not your first language, you will need to demonstrate that you have reached a satisfactory standard in an approved English language test. For the majority of our courses we require an IELTS level of 6.5 or equivalent, achieved in the past two years. If you need to improve your English language skills, you can apply to our pre-session English language courses. For more information on general English language requirements please visit our website.

---

 **Find out more**  
[www.southampton.ac.uk/international](http://www.southampton.ac.uk/international)

---

**T:** +44 (0)23 8059 9699

---

**E:** [global@southampton.ac.uk](mailto:global@southampton.ac.uk)

---

# TRAVEL DETAILS

---

**Southampton has excellent transport links with the rest of the UK and internationally, by road, rail, sea and air.**

---

## By road

Our Southampton and Winchester campuses are well connected to the national road network. The M3 links Southampton and Winchester directly to London. For Southampton campuses, exit the M3 at junction 14 and follow signs for Southampton (A33). Follow the A33 into Bassett Avenue and follow signs to University campuses.

For Winchester School of Art, exit the M3 at junction nine or 10 and follow signs to the campus.

The M27 is one of the major road links along the south coast of England and passes Southampton to the north. For the University, leave the M27 at junction five (Southampton Airport) and follow signs to University campuses.

## Satellite navigation

When travelling by car, please use the following postcodes in satellite navigation devices:

For Southampton Highfield Campus, use **SO17 1BJ**

For Avenue Campus, use **SO17 1BF**

For the National Oceanography Centre Southampton, use **SO14 3ZH**

For Southampton General Hospital, use **SO16 6YD**

For Winchester School of Art, use **SO23 8DL**

---

## By air

Southampton Airport is about 20 minutes from the Southampton campuses by bus or taxi. There is a full UK domestic service, as well as flights to mainland Europe, including Schiphol Amsterdam, and the Channel Islands. If you are arriving in the UK via London Gatwick or London Heathrow airports, you can reach Southampton by road, bus, coach and rail.

## By bus

We run the award-winning unilink bus service that connects our Southampton campuses with all the major transport links in the city. You can buy tickets at the unilink office or on the bus.

Downloadable for iPhone, the SotonBus App allows you to view bus and route information from all major bus operators in the Southampton area. With GPS positioning, you can find your nearest bus stop, plan routes and save frequently used bus stops for easy access.

## By coach

The National Express SH032 service to London Victoria Coach Station via Heathrow runs through Highfield Campus. For timetable information, visit [www.nationalexpress.com](http://www.nationalexpress.com)

## By rail

Southampton and Winchester are well served by mainline railway stations – Southampton Central, Southampton Airport Parkway and Winchester. Fast trains from London and Bournemouth/Weymouth stop at all three stations, and the typical journey times to London Waterloo from Southampton Central and Winchester are an hour and 20 minutes and an hour, respectively. Winchester School of Art is a 15-minute walk from Winchester train station. The unilink frequent bus service (U1), connects into the Southampton Airport Parkway and Southampton Central train services, via the University.





With up to seven buses an hour and major routes providing a bus every 10 minutes in peak times, unilink connects you with your accommodation, our campuses and major transport hubs in Southampton







# HOW TO FIND US



## CAMPUS INFORMATION

-  University buildings
-  Halls of residence

## TRANSPORT INFORMATION

-  Airport
-  Ferry terminal
-  Railway station
-  Coach station

 Find out more  
[www.southampton.ac.uk/campuses](http://www.southampton.ac.uk/campuses)

# TERMS & CONDITIONS

The University's Charter, Statutes, Regulations and Policies are set out in the University Calendar and can be accessed online at [www.calendar.soton.ac.uk](http://www.calendar.soton.ac.uk)

## Terms of use

This brochure does not constitute an offer or invitation by the University of Southampton to study at Southampton. This brochure provides an overview of the University and life at Southampton, along with information about all the undergraduate programmes available at the time of publication. It is provided for information purposes only. Relevant weblinks are shown throughout the brochure. Please also consult the programme information online for further details or for any changes that have appeared since first publication of the brochure.

The information contained in the brochure, welcome guides or on our websites is subject to change and may be updated by the University from time to time to reflect intellectual advances in the subject, changing requirements of professional bodies and changes in academic staff members' interests and expertise. Changes may also occur as a result of monitoring and review by the University, external agencies or regulators.

## 1. Change or discontinuance of programmes

The University of Southampton will use all reasonable efforts to deliver advertised programmes and other services and facilities in accordance with the descriptions set out in the brochure, student handbooks, welcome guides and website. It will provide students with the tuition and learning support and other services and facilities so described with reasonable care and skill.

We undertake a continuous review of our programmes, services and facilities to ensure quality enhancement. We are also largely funded through public and charitable means and are required to manage these funds in an efficient and cost-effective way for the benefit of the whole of the University community. We therefore, reserve the right where necessary:

- to alter the timetable, location, number of classes, content or method of delivery of programmes of study and/or examination processes, provided such alterations are reasonable;
- to make reasonable variations to the content and syllabus of programmes of study (including in relation to placements);
- to suspend or discontinue programmes of study (for example, because a key member of staff is unwell or leaves the University);
- to make changes to our Statutes, Ordinances, Regulations, policies and procedures which we reasonably consider necessary (for example, in the light of changes in the law or the requirements of the University's regulators). Such changes if significant will normally come into force at the beginning of the following academic year or, if fundamental to the programme, will normally come into force with effect from the next cohort of students;
- to close programmes of study or to combine or merge them with others (for example, because too

few students apply to join the programme for it to be viable).

If the University closes, discontinues or combines a programme of study or otherwise changes a programme of study significantly (the "Change"), the University will inform applicants (or students where relevant) affected by the Change at the earliest possible opportunity.

- If the Change comes into force before the University has made an offer of a place or **before** an applicant has accepted an **offer** of a place, an applicant will be entitled to withdraw his or her application, without any liability to the University, by informing the University in writing within a reasonable time of being notified of the Change.
- If the Change comes into force **after** an **offer** has been accepted but prior to the student **enrolling**, the student may either:
  - withdraw from the University and be given an appropriate refund of tuition fees and deposits, or
  - transfer to another available programme (if any) as may be offered by the University for which the student is qualified.

If in these circumstances the student wishes to withdraw from the University and to apply for a programme at a different university, the University shall use its reasonable endeavours to assist the student.

- If the Change comes into force **after** a student has **enrolled**, the University will use reasonable endeavours to teach the programme out but cannot guarantee to do so. If the University cannot teach out a programme of study, it will use its reasonable endeavours to facilitate the transfer of a student to an equivalent programme for which the student is qualified and which has places available within the University or at a different university.

## 2. Changes to services or facilities

The University will make available to students such learning support and other services and facilities as it considers appropriate, but may vary what it provides from time to time (for example, the University may consider it desirable to change the way it provides library or IT support).

## 3. Financial or other losses

The University will not be held liable for any direct or indirect financial or other losses or damage arising from such closures, discontinuations, changes to or mergers of any programme of study, service or facility.

Upon acceptance by an applicant of an offer of a place at the University, the relationship between the applicant and the University becomes contractual. When the contract is formed between the student and the University it will last for the relevant academic year only unless the student withdraws from the programme or the programme is terminated. Please note: the right of a student to withdraw from a programme of study under the provisions set out in paragraph 1(b) above following a Change, are in addition to any statutory rights of

cancellation that may exist under the Consumer Contracts (Information, Cancellation and Additional Charges) Regulations 2013. In entering into that contract, the terms of the contract will not be enforceable by any person not a party to that contract under the Contracts (Rights of Third Parties) Act 1999.

## Force majeure

The University will not be held liable for any loss, damage or expense resulting from any delay, variation or failure in the provision of programmes of study, services or facilities arising from circumstances beyond the University's reasonable control, including (but not limited to) war or threat of war, riot, civil strife, terrorist activity, industrial dispute, natural or nuclear disaster, adverse weather conditions, interruption in power supplies or other services for any reason, fire, boycott and telecommunications failure.

In the event that such circumstances beyond the reasonable control of the University arise, it will use all reasonable endeavours to minimise disruption as far as it is practical to do so provided that such endeavours do not undermine the University's Quality Assurance requirements.

## Admissions Policy and Complaints

The University will assess applications in line with its then current Admissions Policy. The Admissions Policy, current at the time of publication, is published online and is available at [www.southampton.ac.uk](http://www.southampton.ac.uk). The Admissions Policy is reviewed at least annually.

Applicants may raise complaints related to admissions under the University's Regulations Governing Complaints from Applicants, which can be found in the Calendar at [www.calendar.soton.ac.uk](http://www.calendar.soton.ac.uk)

Further information about, or clarification of, these procedures is available from Admissions Team, Student and Academic Administration, University of Southampton, Southampton SO17 1BJ, email: [admissions@soton.ac.uk](mailto:admissions@soton.ac.uk).

## Data Protection

During the application procedure, the University will be provided with personal information relating to the applicant. An applicant's personal data will be held and processed by the University in accordance with the requirements of the Data Protection Act 1998.

## © University of Southampton 2015

A copy of this brochure and the University's current information for students with disabilities and specific learning difficulties can be made available, on request, in alternative formats, such as electronic, large print, Braille or audio, and, in some cases, other languages.

Published and produced by Communications and Marketing. Photographs courtesy of: Jon Banfield, and staff and students of the University.

[www.southampton.ac.uk/ambition](http://www.southampton.ac.uk/ambition)  
UK and EU enquiries:  
[ugapply.fshs@southampton.ac.uk](mailto:ugapply.fshs@southampton.ac.uk)  
+44 (0)23 8059 3760

International enquiries:  
[global@southampton.ac.uk](mailto:global@southampton.ac.uk)  
+44 (0)23 8059 9699



We are developing innovative models to predict how the riverbanks of the Mekong will respond to environmental pressures and how this will affect livelihoods



When finished with this document please recycle it.