

[www.southampton.ac.uk/ml](http://www.southampton.ac.uk/ml)  
UK and EU enquiries  
[ugapply.fh@southampton.ac.uk](mailto:ugapply.fh@southampton.ac.uk)  
+44 (0)23 8059 9339

International enquiries:  
[global@southampton.ac.uk](mailto:global@southampton.ac.uk)  
+44 (0)23 8059 9699



“If you speak to a man in a language  
he understands, that goes to his head.  
If you speak to a man in his own  
language, that goes to his heart.”  
Nelson Mandela

Humanities

UNIVERSITY OF  
**Southampton**

# COMMUNICATE WITH THE **WORLD**

Modern Languages Undergraduate Courses



When finished with this document please recycle it.





**Reach your goals at Southampton by combining your ambition, your talent and our support.**

Choosing the right place to study is an important decision, with many factors to think about. Join us, an institution in the top one per cent of world universities\* and a founding member of the Russell Group of research-intensive UK universities. At Southampton you are taught by world-leading academics on courses that are designed around you. We get you ready for the global jobs market, while giving you a great student experience.

Southampton was ranked as the fourth best for Modern Languages in the UK by The Guardian's University Guide 2014, reflecting the quality of our teaching, staff-student ratios and graduates' job prospects.

# CHOOSE SOUTHAMPTON

## Contents

- 04 Choose Southampton
- 18 Course overview
- 20 Course information
- 38 Your student experience
- 40 Fees, applying, scholarships and bursaries
- 41 International Students
- 42 How to find us

\*QS World University Ranking 2013



# CHOOSE SOUTHAMPTON: A GLOBAL UNIVERSITY

As the birthplace of the Spitfire and the port the Pilgrim Fathers set sail from to discover the New World in 1620, Southampton has a history of innovation and exploration. As a forward-thinking university, we uphold these values in our education and research; join us to forge a successful future.

- ➔ Our students study at partner institutions across the world
- ➔ Our alumni are part of a network of professionals that covers the globe
- ➔ Our academics are bringing positive impact to every continent
- ➔ Our business, government and non-government organisation partners span the globe
- ➔ We are part of the Worldwide Universities Network, a collaboration of knowledge from around the world

Study opportunities include: **Australia, China, Mexico and the USA**



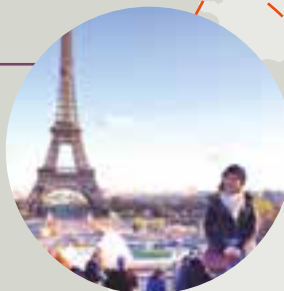
## DAY OF THE DEAD

The Centre for Mexico-Southampton collaboration (MeXsu) promotes Mexican culture, from art, culture and social activities

## PARISIAN PASTIMES

BA English and French student Lara Keay spent her year abroad working as a travel writer for a French publication:

“When I chose a French degree I knew there would be a year abroad, but never did I imagine I would actually have the chance to spend it in Paris”



“To go somewhere like Cameroon is really exciting because you finally get an idea of what a massive and complex world your language has the potential to give you access to”  
(Ellie Feehan, BA French and Spanish)



## CAMEROON CATALYST

Modern Languages students are involved in Cameroon Catalyst, a student-led organisation that aims to improve the lives of a community in Bamabouti through development

We are an institution in the top **1%** of global universities



## BRITAIN TO BRAZIL

BA Spanish and Portuguese student Hannah Talbot spent her year abroad in Brazil: “I want to inspire future students to take the leap to come here, and to encourage them to take advantage of the opportunities given to them”

Scholarships worth up to **£500** for selected students who blog about their study abroad experiences



## MADRID FOR BEGINNERS

Amy Ashenden, who studies BA French and Spanish, spent her year abroad in Spain shadowing the BBC's Madrid Correspondent

Our University of Southampton Malaysia Campus offers students the chance to gain a unique ‘Southampton’ education in Malaysia combined with two years in the UK

We have **322** partnerships in **54 countries** around the world



Find out more

[www.southampton.ac.uk/global](http://www.southampton.ac.uk/global)

# CHOOSE SOUTHAMPTON: CHANGE THE WORLD

## Los Niños

Child exiles of the Spanish Civil War

In 2009 the University of Southampton, in collaboration with Hampshire Archives and Local Studies, received a grant from the Heritage Lottery Fund (HLF) to record and disseminate the life histories of 30 former refugees that arrived in Southampton in May 1937. They were part of a contingent of nearly 4,000 children who were fleeing the bombings of Guernica and other Basque towns during the Spanish Civil War.

The project delves into the experiences of the children who came to Southampton and the UK, their lives here, the question of return to the Iberian peninsula, and the complex questions that arise from transnational migration in time of conflict.

## COLLABORATIVE WORKING

Working in partnership with Hampshire  
Archives and the Heritage Lottery

## UNTOLD STORIES

Fascinating accounts  
of previously unheard  
stories

## HISTORICAL IMPACT

Thousands of child refugees  
fled to the UK during the  
Spanish Civil War

Children climbing on board the Steamship Habana bound for Southampton



Find out more

[www.southampton.ac.uk/researchfacilities](http://www.southampton.ac.uk/researchfacilities)



# CHOOSE SOUTHAMPTON: **PASSION, IMPACT, ADVANTAGE**

Caroline Wyatt

## **BBC DEFENCE CORRESPONDENT**

BA English and German

"The most important part of my degree was being taught how to learn and how to research thoroughly," says Caroline.

"This has been incredibly important. More practically, of course, my qualification in German helped me to get my first posting with the BBC to Berlin."

**Southampton people have a passion to change the world through their research and collaborations with global partners**

- ➔ Our lecturers push the boundaries of knowledge
- ➔ You are taught differently; our research informs your education
- ➔ Studying with our world-leading academics gives you an edge
- ➔ You are involved with important research as it unfolds
- ➔ Join us and share our knowledge to gain your advantage

## Professor Mike Kelly **HEAD OF MODERN LANGUAGES**

Professor Mike Kelly,  
Officier des Palmes Academiques  
"I was delighted recently to receive the French honour of Chevalier des arts et des lettres, for promoting cultural relations between Britain and France"



## Florence Broderick **DIGITAL COMMUNICATIONS**

BA Languages and Contemporary European Studies graduate Florence has been accepted on to the International Future Leaders graduate scheme in Madrid, where she will be working for communications company Telefonica Digital



## Hannah Critoph **TRANSLATOR**

BA French and German graduate Hannah Critoph uses the in-depth knowledge she gained from her languages degree every day as a translator



**Find out more**

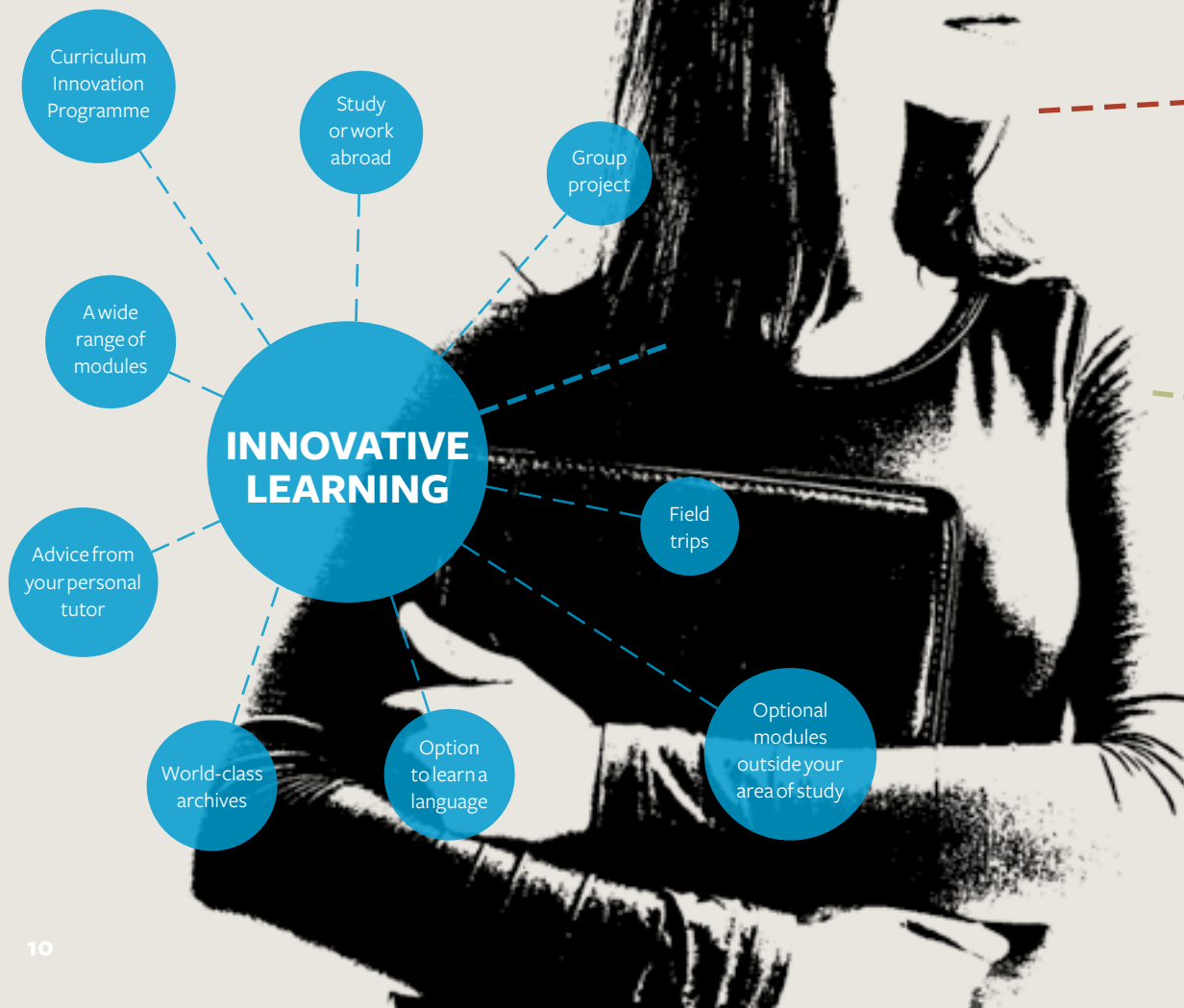
[www.southampton.ac.uk/people](http://www.southampton.ac.uk/people)

# CHOOSE SOUTHAMPTON: DESIGN YOUR OWN EDUCATION

## Your courses are developed and taught by world experts

Your course offers you breadth as well as depth

- ➔ Be independent and shape your course
- ➔ As well as large lectures and small seminars, you can access many lectures and learning resources on the move
- ➔ We work with you to make programmes more flexible



Find out more

[www.southampton.ac.uk/choice](http://www.southampton.ac.uk/choice)



# CHOOSE SOUTHAMPTON: FLEXIBLE LEARNING

**We give you the chance to study subjects not directly linked to your degree.**

There are 20 new modules to give you a broader learning experience if you wish, from business skills tailored towards employability to communication in a global world or sustainability in local and global environments.

“What I enjoy most about my degree programme is the flexibility and choice on offer. The majority of modules on offer are optional and this freedom of choice means you can study the areas you want to.”

**Andreas Day**  
BA French (Linguistic Studies)





# CHOOSE SOUTHAMPTON: SHAPE YOUR FUTURE

## A degree at Southampton opens doors for career opportunities

Southampton fast-tracks your ambitions

- We prepare you for future challenges not yet imagined and jobs not yet thought of
  - We are among the top 20 UK universities targeted by the largest number of top 100 graduate recruiters\*
  - In the most recent Destinations of Leavers from Higher Education statistics 84 per cent of our graduates entered into employment and/or further study
  - We are one of the top 30 UK universities for starting salaries according to *The Sunday Times* University Guide 2012
- We can help you build your dream CV
  - Take advantage of our commercial partnerships via work placements, internships and volunteering
  - Gather evidence of your achievements through our programme of personal development to complement your academic study
  - Network with top employers at our careers events
  - Join us at entrepreneur workshops and competitions
  - Get advice from our graduates about future careers
  - Specialise further with one of our postgraduate courses and gain a more in-depth knowledge of your subject, and realise your ambitions

\*High Fliers Research, 2012

## Our graduates land jobs at high-profile organisations such as:

Amazon UK  
Anglo Institute  
BBC  
British Airways  
British Consulate  
British Council  
Film4  
French Education Ministry

German Red Cross  
Interpol  
Palgrave Macmillan  
Telefonica Digital  
The International Chamber of Commerce  
The Spanish Ministry of Education  
Times Publishing

Specialise further with a postgraduate degree

Personal development programme

Advice from graduates

Network with top employers

Careers events

**BUILD YOUR DREAM CV**

Volunteering

Work placements & internships



**Find out more**

Learn how we can help you build your dream CV:  
[www.southampton.ac.uk/dreamcv](http://www.southampton.ac.uk/dreamcv)



A man in a dark blue British Airways pilot's uniform is smiling and standing on the stairs of a plane. He is wearing a white shirt, a dark tie, and a red poppy on his lapel. The plane's fuselage is visible in the background with the word 'BRITISHAIRWAYS' partially visible.

# WHAT'S YOUR **AMBITION?**

## *TO BE A HIGH FLYER*

### **Oliver Spicer**

BA Spanish and Portuguese, 2007  
Senior First Officer, British Airways

Oliver Spicer has landed his dream job. He always wanted to be an airline pilot and is now a Senior First Officer for British Airways. He has always had a thirst for languages, travel and foreign culture.

Oliver began his jet-setting adventures while at university on his year abroad in Chile. He currently spends at least half of every month outside the UK.

He says "with British Airways ever expanding route network to Spanish and Portuguese speaking countries, I find myself relying on my languages more and more"



**Find out more**

[www.southampton.ac.uk/dreamcv](http://www.southampton.ac.uk/dreamcv)



# COURSE OVERVIEW

**At Southampton you will be introduced to a broad interdisciplinary range of approaches and areas consisting of linguistic studies, social-political studies, and cultural studies, including literature, film and the media.**

## Choose Southampton

- Modern languages at Southampton is consistently ranked in the top five in the UK by the Guardian University Guide
- Stimulating and engaging teaching in areas of linguistics, history, culture and society
- Teaching and Learning supported by three research centres: Transnational Studies, Global Englishes, Applied Language Research
- Learn another language, such as Arabic, Chinese, French, German, Italian, Japanese, Portuguese, Russian or Spanish, from scratch

**100%**

of our Linguistics and Languages students were satisfied with their course overall (National Student Survey 2013)

Links with

**30**

international partner universities around the globe

## Course structure

Our unique seven-stage language learning programme is based on your level of language proficiency rather than your year of study, enabling you to make rapid progress in your chosen language. You will have a broad range of options to choose from in your second and final year, and a year abroad in your third year.

You can choose single or combined degree programmes in French, German, Spanish, Portuguese and Latin American Studies, European Studies and Linguistics Studies. You can combine your language study with another subject. You can add a new language. And you can now apply for our exciting new Integrated Masters in Languages (MLang) programmes.

Individual modules listed in this brochure may vary from year to year, but these examples demonstrate some of the different topics you might explore as part of your degree.

## How will you learn?

The main teaching methods we use for our courses are lectures and seminars (discussion groups of up to 20 students). Lectures are more common in the first year, where the emphasis is on introducing you to fields of study and particular subjects relating to your chosen language(s), but these are always backed up by seminars in order to give you the chance to discuss the content of the lectures.

In the second and final years, most courses are taught in seminars, and the emphasis gradually shifts from tutor-led to student-led discussion. We attach great importance to teamwork – both among members of staff and among students – as well as to developing your ability to work independently. Tutors are always happy to see you individually to give advice on your work or discuss your assignments. Throughout your time here we will monitor your progress carefully, and provide opportunities for formal one-to-one consultation with members of staff.

## Study abroad

All Modern Languages students, except those taking English as their first foreign language, spend their third year abroad in a country where one of the languages they are studying is spoken.

Most students spend the year in a European country, but many go further afield, and we have links with universities all over the world, including Latin America.

In preparation for the year abroad, all first year students take the module 'Academic Skills for Modern Language Students' for the application and consolidation of effective strategies in language learning and research. In addition, second year students take a module which prepares them to conduct research during their third year abroad.

## French (page 20 - 24)

- 97 per cent student satisfaction (NSS, 2013)
- Many areas of linguistics taught by world-leading experts

## German (page 25 - 28)

- 95 per cent student satisfaction (NSS, 2013)
- Highly skilled and committed language teachers promote rapid and effective language learning

## Linguistics and Languages (page 29 - 33)

- 100 per cent of students are satisfied with our linguistic studies programmes (NSS, 2013)
- Many areas of linguistics taught by world-leading experts
- Choose from Arabic, French, German, Italian, Spanish, Portuguese, English (available to non-native English speakers only), Chinese, Japanese and Russian; except for English, all languages can be studied from scratch

## Spanish, Portuguese and Latin American Studies (page 34 - 37)

- Modules in many areas of linguistics/applied linguistics taught by world-leading experts
- Choose between BA and Integrated Masters (MLang) programmes

## Find out more

Tel: +44 (0)23 8059 9339

Email: [ugapply.fh@southampton.ac.uk](mailto:ugapply.fh@southampton.ac.uk)

[www.southampton.ac.uk/ml](http://www.southampton.ac.uk/ml)



## BA French <sup>R120</sup>

### Content

In your first year, you will follow a French language course to develop four fundamental practical skills: reading, writing, listening and speaking. Depending on the combination, you may then choose up to three options in French culture, French linguistics or French society. In your second and fourth years, you will develop your practical French language skills and take a range of optional modules. Your third year will normally be spent in a French-speaking country as a student on an Erasmus exchange, a language assistant in a school or in other suitable employment. We have Erasmus links with universities in Aix-en-Provence, Albi, Besançon, Grenoble, Lille, Lyon and with Paris VIII.

### Key information

Duration: 4 years

### Typical entry requirements

- A levels: AAB, including A in French
- IB: 34 points, 17 at higher level, including 6 at higher level in French

Applicants from outside the UK who do not meet current entry requirements may be able to join the International Foundation Year [www.southampton.ac.uk/ify](http://www.southampton.ac.uk/ify)

### Programme structure

#### Modules

- French Language
- Immigration, Race and Ethnicity in France
- Managing Research and Learning
- Fiction in the Age of Extremes: Selected French Novels of the Twentieth Century
- Psycholinguistics
- Ethnography for Language Learners
- French Cinema of the 1930s
- Autobiography and Testimony

## BA French & German <sup>RR12</sup>

### Content

Combined honours offer the same quality and flexibility as our single honours programmes. In year one, you will study compulsory language modules and a range of optional modules. In your second and fourth years, you will develop your practical language skills and choose options according to your interests. You will spend year three in a country where one of your chosen languages is spoken. Strong candidates with grade A at A level in either French or German but no previous knowledge of the other language may apply for this programme. Students on this route would study either accelerated French or German language classes from beginner's level.

### Key information

Duration: 4 years

### Typical entry requirements

- A levels: AAB, including AB in French and German
- IB: 34 points, 17 at higher level, including 6 at higher level in French and German

Applicants from outside the UK who do not meet current entry requirements may be able to join the International Foundation Year [www.southampton.ac.uk/ify](http://www.southampton.ac.uk/ify)

### Programme structure

#### Modules

- French and German language
- Modern French Culture
- The Making of Modern French
- Liberté, Égalité, Fraternité
- Introduction to German Linguistic Studies
- German History, Politics and Society
- Approaches to German-Jewish Literature

## BA French & Philosophy <sup>RV15</sup>

### Content

French is a key international language, native to France, Belgium, Switzerland, Canada and the French Caribbean and an official language in much of Africa and Asia, while philosophy fosters rational thinking and communication, skills that are in great demand. As well as fostering similar skill sets, the two subjects offer modules with complementary content. For example, in philosophy you may study the philosophy of language, aesthetics and continental philosophy, and you will be in a unique position to engage with the works of famous French philosophers such as Sartre and Foucault.

### Key information

Duration: 4 years

### Typical entry requirements

- A levels: AAB, including A in French
- IB: 34 points, 17 at higher level, including 6 at higher level in French

Applicants from outside the UK who do not meet current entry requirements may be able to join the International Foundation Year [www.southampton.ac.uk/ify](http://www.southampton.ac.uk/ify)

### Programme structure

#### Modules

- French Language
- Modern French Culture
- The Making of Modern French
- Liberté, Égalité, Fraternité
- Elements of Linguistics: Sound, Structure and Meaning
- Introduction to Political Philosophy
- Faith and reason
- Existentialism
- Ethics
- Puzzles about art and literature

## BA French & Music <sup>RW13</sup>

### Content

Combined honours degrees offer the same quality and flexibility as our single honours programmes. In year one, you will study compulsory language modules and a range of optional modules. In your second and fourth years, you will develop your practical language skills and choose options according to your interests. Music options embrace a wide range of musical styles and traditions and allow you to develop your studies in performance, composition and musicology. In addition to technical, historical and critical studies, there are opportunities to engage with a varied programme of practical music activities both on and off campus. You will spend year three in a French-speaking country. Grade 8 ABRSM, Rockschool or Trinity may be required for certain optional modules.

### Key information

Duration: 4 years

### Typical entry requirements

- A levels: AAB, including AB in French and Music
- IB: 34 points, 17 at higher level, including 6 at higher level in French and Music

Applicants from outside the UK who do not meet current entry requirements may be able to join the International Foundation Year [www.southampton.ac.uk/ify](http://www.southampton.ac.uk/ify)

### Programme structure

#### Modules

- French Language
- Modern French Culture
- The Making of Modern French
- Liberté, Égalité, Fraternité
- Approaches to German-Jewish Literature
- Antique Music Roadshow 1: Materials of Music History c.1500-1750
- Performance Tuition
- Introduction to Jazz Popular Music
- Introduction to Ethnomusicology
- Introduction to Twentieth Century Music
- Tonal Composition

## Find out more

Tel: +44 (0)23 8059 9339  
Email: [ugapply.fh@southampton.ac.uk](mailto:ugapply.fh@southampton.ac.uk)  
[www.southampton.ac.uk/ml](http://www.southampton.ac.uk/ml)

## Find out more

Tel: +44 (0)23 8059 9339  
Email: [ugapply.fh@southampton.ac.uk](mailto:ugapply.fh@southampton.ac.uk)  
[www.southampton.ac.uk/ml](http://www.southampton.ac.uk/ml)



# BA French & Spanish<sup>RR14</sup>

## Content

You will complement your language learning with modules on French history and contemporary society, French literature and film, or French linguistic studies. You will also explore Spanish and Latin American studies, in particular, cultural studies, sociolinguistics, history and politics in addition to studying the Spanish language. You will spend year three in a country where one of your chosen languages is spoken. Strong candidates with grade A at A level in either French or Spanish but no previous knowledge of the other language may apply for this programme. Students on this route would study either accelerated French or Spanish language classes from beginner's level.

## Key information

Duration: 4 years

## Typical entry requirements

- A levels: AAB, including AB in French and Spanish
- IB: 34 points, 17 at higher level, including 6 at higher level in French and Spanish

Applicants from outside the UK who do not meet current entry requirements may be able to join the International Foundation Year [www.southampton.ac.uk/ify](http://www.southampton.ac.uk/ify)

## Programme structure

### Modules

- French and Spanish Language
- Modern French Culture
- The Making of Modern French
- Liberté, Égalité, Fraternité
- Introduction to the Portuguese-Speaking World
- History and Politics of the Hispanic World
- The Languages of the Spanish-Speaking World
- Narrative and Cultural Identity in the Hispanic World
- Elements of Linguistics: Sound, Structure and Meaning

# BA French & Portuguese<sup>RR15</sup>

## Content

Combined honours offer the same quality and flexibility as our single honours programmes. In year one, you will study compulsory language modules and a range of optional modules. In your second and fourth years, you will develop your practical language skills and choose options according to your interests. You will spend a year abroad in year three in a country where one of your chosen languages is spoken. Strong candidates with grade A at A level in either French or Portuguese but no previous knowledge of the other language may apply for this programme. Students on this route would study either accelerated French or Portuguese language classes from beginner's level.

## Key information

Duration: 4 years

## Typical entry requirements

- A levels: AAB, including A in French or Portuguese.
- IB: 34 points, 17 at higher level, including 6 at higher level in French or Portuguese

Applicants from outside the UK who do not meet current entry requirements may be able to join the International Foundation Year [www.southampton.ac.uk/ify](http://www.southampton.ac.uk/ify)

## Programme structure

### Modules

- French and Portuguese Languages
- Introduction to the Portuguese-Speaking World
- Cultural Identity in the Portuguese Speaking World
- Culture and Society in Portugal and Brazil
- Modern French Culture
- Liberté, Égalité, Fraternité
- Reading Culture
- Elements of Linguistics: Sound, Structure and Meaning
- Applications of Linguistics French Cinema of the 1930s
- Globalisation: Economics, Politics, Culture and the Nation State
- Discourse Analysis

# BSc Management Sciences & French<sup>NRF1</sup>

## Content

This is a flexible course which will suit your personal aims and objectives. A wide and fascinating range of modules related to our specialisms are led by academics passionate about their research wishing to engage you in their experience. You will spend year three in a French-speaking country. GCSE mathematics at grade B is required.

## Key information

Duration: 4 years

## Typical entry requirements

- A levels: AAB, including A in French
- IB: 34 points, 17 at higher level, including 6 at higher level in French

Applicants from outside the UK who do not meet current entry requirements may be able to join the International Foundation Year [www.southampton.ac.uk/ify](http://www.southampton.ac.uk/ify)

## Programme structure

### Modules

- Introduction to Management
- Management Analysis
- Organisations & Management
- Managing Research and Learning
- French language
- Modern French Culture
- Liberté, Égalité, Fraternité
- French Post-War Thought
- Contemporary Urban France
- Globalisation: Economics, Politics, Culture and the Nation State
- Psycholinguistics
- Discourse Analysis

# BA Politics & French<sup>LR21</sup>

## Content

Year one modules provide an introduction to the study of cultural forms and political, historical and linguistic issues. In years two and four, you will have the opportunity to concentrate on your own particular interests, selecting from a range of more specialised modules. You will spend year three in a French-speaking country.

## Key information

Duration: 4 years

## Typical entry requirements

- A levels: AAB, including A in French
- IB: 34 points, 17 at higher level, including 6 at higher level in French

Applicants from outside the UK who do not meet current entry requirements may be able to join the International Foundation Year [www.southampton.ac.uk/ify](http://www.southampton.ac.uk/ify)

## Programme structure

### Modules

- Political Systems
- Issues in Contemporary Politics
- Managing Research and Learning
- Democracy and the Modern State
- Issues in Third World Politics
- International Security
- French Language
- The Making of Modern French
- Liberté, Égalité, Fraternité
- French Post-War Thought
- Immigration, Race and Ethnicity in France
- Colonial Encounters: Culture and Society in the French Empire

## Find out more

Tel: +44 (0)23 8059 9339  
Email: [ugapply.fh@southampton.ac.uk](mailto:ugapply.fh@southampton.ac.uk)  
[www.southampton.ac.uk/ml](http://www.southampton.ac.uk/ml)

## Find out more

Tel: +44 (0)23 8059 9339  
Email: [ugapply.fh@southampton.ac.uk](mailto:ugapply.fh@southampton.ac.uk)  
[www.southampton.ac.uk/ml](http://www.southampton.ac.uk/ml)

# Integrated Masters in Languages (MLang)

## Choose Southampton

- Gain a Masters qualification in 4 years with full Year Abroad
- Same funding options as for BA programmes (reduced fee on Year Abroad).
- Option to specialise in certain areas (e.g. translation, interpreting, language education) at various points in the degree.
- Study one or two languages, one from beginner's level.
- Pathways allow you to choose from a range of undergraduate and postgraduate modules.

## French MLang 1C72

## French Linguistic Studies MLang 5A9V

## French and German MLang 5XP9

## French and German Linguistic Studies MLang 31C7

## French and Spanish Linguistics Studies MLang 1T67

## French and Portuguese MLang 5F98

## French and Spanish MLang 5Y87

## Content

This is a new and distinctive programme which we are offering in addition to our BA Modern Languages programme. The MLang leads to a full Masters award and offers you the same choice and flexibility as the BA programmes together with a full year abroad. It also has the same funding options.

The first two years of the programme run alongside the equivalent BA pathways although in your second year, you take a separate module preparing you for academic study on your year abroad. During your third year you will study at one of Southampton's partner institutions abroad and will also take a number of online courses from Southampton. We also strongly recommend that you take a three month work or study placement in a second country if you are studying two languages.

In your final year, in addition to your language module/s, you can choose from a range of Masters modules, including specialist modules in translating and interpreting, language education, and transnational studies. At the end of the year, you complete a research dissertation guided and supported by your academic supervisor.

## Key information

Duration: 4 years

## Typical entry requirements

- A levels: AAA, including grade A in at least one relevant language
- IB: 36 points with 18 at the Higher Level, including 6 at higher level in at least one relevant language

## Programme structure

### Modules

MLang students can select from BA modules in their chosen language(s).

In addition, during the final year of study, students will be able to select from an extensive range of modules from the Modern Languages Masters programs:

[www.southampton.ac.uk/ml/postgraduate/index.page](http://www.southampton.ac.uk/ml/postgraduate/index.page)

# BA German R220

## Content

This flexible course means that you can specialise in a particular field of study or spread your interests. During your year abroad, you will choose between being a language assistant in a school, studying at an Erasmus partner university such as Hamburg, Frankfurt, Vienna or Potsdam, or working in an approved job.

## Key information

Duration: 4 years

## Typical entry requirements

- A levels: AAB, including A in German
- IB: 34 points, 17 at higher level, including 6 at higher level in German

Applicants from outside the UK who do not meet current entry requirements may be able to join the International Foundation Year [www.southampton.ac.uk/ify](http://www.southampton.ac.uk/ify)

## Programme structure

### Modules

- German Language
- German History, Politics and Society
- Approaches to German-Jewish Literature
- German History, Politics and Society
- Approaches to German-Jewish Literature
- Elements of Linguistics: Sound, Structure and Meaning
- Metropolitan Cultures: Vienna and Berlin
- Introduction to German Cinema
- Media Perspectives on Post-1968 Germany
- Language and Society in the German-speaking World
- Psycholinguistics
- Teaching English as a Second/Foreign Language

## Find out more

Tel: +44 (0)23 8059 9339  
Email: [ugapply.fh@southampton.ac.uk](mailto:ugapply.fh@southampton.ac.uk)  
[www.southampton.ac.uk/ml](http://www.southampton.ac.uk/ml)

# BA German & Music RW23

## Content

This course is a particularly suitable combination, given the rich musical tradition linked to the German speaking world. You will develop your practical language skills and choose options according to your interests in both subjects. Music options embrace a wide range of musical styles and traditions and allow you to develop your studies in performance, composition and musicology. In addition to technical, historical and critical studies, there are opportunities to engage with a varied programme of practical music activities both on and off campus. You will spend year three in a German-speaking country. Grade 8 ABRSM, Rockschoo or Trinity may be required for certain optional modules.

## Key information

Duration: 4 years

## Typical entry requirements

- A levels: AAB, including A in German and Music
- IB: 34 points, 17 at higher level, including 6 at higher level in German and Music

Applicants from outside the UK who do not meet current entry requirements may be able to join the International Foundation Year [www.southampton.ac.uk/ify](http://www.southampton.ac.uk/ify)

## Programme structure

### Modules

- German language
- German History, Politics and Society
- Approaches to German-Jewish Literature
- Introduction to German Cinema
- Media Perspectives on Post-1968 Germany
- Metropolitan Cultures: Vienna and Berlin
- Language and Society in the German-speaking World
- Antique Music Roadshow 1: Materials of Music History c.1500-1750
- Introduction to Jazz Popular Music
- Foundations in Analysis, Counterpoint and Harmony
- Introduction to Ethnomusicology
- Introduction to Twentieth Century Music
- Antique Music Roadshow 2: Materials of Music History, 1750-1900

## Find out more

Tel: +44 (0)23 8059 9339  
Email: [ugapply.fh@southampton.ac.uk](mailto:ugapply.fh@southampton.ac.uk)  
[www.southampton.ac.uk/ml](http://www.southampton.ac.uk/ml)



# BA German & Philosophy RV25

## Content

German and philosophy both require a strong, critical mind, imagination and the ability to communicate clearly and with flair. Southampton has research strengths in 19th and early 20th century German philosophy and you will have the opportunity to engage with the works of famous German philosophers such as Schopenhauer, Nietzsche and Heidegger. You will spend year three in a German-speaking country.

## Key information

Duration: 4 years

## Typical entry requirements

- A levels: AAB, including A in German
- IB: 34 points, 17 at higher level, including 6 at higher level in German

Applicants from outside the UK who do not meet current entry requirements may be able to join the International Foundation Year [www.southampton.ac.uk/ify](http://www.southampton.ac.uk/ify)

## Programme structure

### Modules

- German Language
- Academic skills for Modern Language students
- Introduction to German Linguistic Studies
- German History, Politics and Society
- Approaches to German-Jewish Literature
- Elements of Linguistics: Sound, Structure and Meaning
- Introduction to Early Greek Philosophy
- Puzzles about art and literature
- Introduction to Political Philosophy
- Faith and Reason
- Existentialism

## Find out more

Tel: +44 (0)23 8059 9339  
Email: [ugapply.fh@southampton.ac.uk](mailto:ugapply.fh@southampton.ac.uk)  
[www.southampton.ac.uk/ml](http://www.southampton.ac.uk/ml)

# BA German & Spanish RR24

## Content

You will study modules in both languages and choose from a range of options that explore cultural, social and historical issues relevant to the Spanish- and German-speaking worlds. You will spend year three in either a Spanish- or German-speaking country. It is possible to start this degree with no previous knowledge of one of the two languages. Strong candidates with grade A at A level in either German or Spanish but no previous knowledge of the other language may apply for this programme. Students on this route would study either accelerated German or Spanish language classes from beginner's level.

## Key information

Duration: 4 years

## Typical entry requirements

- A levels: AAB, including AB in German and Spanish
- IB: 34 points, 17 at higher level, including 6 at higher level in German and Spanish

Applicants from outside the UK who do not meet current entry requirements may be able to join the International Foundation Year [www.southampton.ac.uk/ify](http://www.southampton.ac.uk/ify)

## Programme structure

### Modules

- German and Spanish Language
- Introduction to German Linguistic Studies
- German History, Politics and Society
- Approaches to German-Jewish Literature
- Metropolitan Cultures: Vienna and Berlin
- Introduction to the Portuguese-Speaking World
- History and Politics of the Hispanic World
- The Languages of the Spanish-Speaking World
- Narrative and Cultural Identity in the Hispanic World
- Gender, Race and Nation in Modern Latin America
- Power and Discourse in Spanish-speaking Societies
- Globalisation: Economics, Politics, Culture and the Nation State
- High, Popular and Mass Culture in Modern Spain and Latin America
- Myths and Realities of Contemporary Spain

# BSc Management Sciences & German NR22

## Content

This programme allows you to pursue your interest in today's business world while studying the language and culture of Europe's largest economy. You will spend year three in a German-speaking country. GCSE mathematics at grade B is required.

## Key information

Duration: 4 years

## Typical entry requirements

- A levels: AAB, including A in German
- IB: 34 points, 17 at higher level, including 6 at higher level in German

Applicants from outside the UK who do not meet current entry requirements may be able to join the International Foundation Year [www.southampton.ac.uk/ify](http://www.southampton.ac.uk/ify)

## Programme structure

### Modules

- Introduction to Management
- Management Analysis
- Information Systems and Information Technology
- Principles and Practice of Management Science
- European Business Environment
- Globalisation: Economics, Politics, Culture and the Nation State
- German Language
- Academic skills for Modern Language students
- Psycholinguistics
- Introduction to German Cinema
- Language and Society in the German-speaking World
- Ethnography for Language Learners
- The EU and European Identity

## Find out more

Tel: +44 (0)23 8059 9339  
Email: [ugapply.fh@southampton.ac.uk](mailto:ugapply.fh@southampton.ac.uk)  
[www.southampton.ac.uk/ml](http://www.southampton.ac.uk/ml)

# BA Politics & German LR22

## Content

If you wish to combine your interest in politics with the study of a major European language, this could be the course for you. An integral member of the European Union, with the world's third largest economy, Germany is at the heart of Europe. You will spend year three in a German-speaking country.

## Key information

Duration: 4 years

## Typical entry requirements

- A levels: AAB, including A in German
- IB: 34 points, 17 at higher level, including 6 at higher level in German

Applicants from outside the UK who do not meet current entry requirements may be able to join the International Foundation Year [www.southampton.ac.uk/ify](http://www.southampton.ac.uk/ify)

## Programme structure

### Modules

- Introduction to International Relations
- Democracy and the Modern State
- Theories of International Relations
- Research Skills in Politics and International Relations
- Issues in Third World Politics
- International Security
- German Language
- German History, Politics and Society
- Globalisation: Economics, Politics, Culture and the Nation State
- Media Perspectives on Post-1968 Germany
- Language and Society in the German-speaking World
- Ethnography for Language Learners
- The EU and European Identity
- Multilingualism

# Integrated Masters in Languages (MLang)

## Choose Southampton

- Gain a Masters qualification in 4 years with full Year Abroad.
- Same funding options as for BA programmes (reduced fee on Year Abroad).
- Option to specialise in certain areas (e.g. translation, interpreting, language education) at various points in the degree.
- Study one or two languages, one from beginner's level.
- Pathways allow you to choose from a range of undergraduate and postgraduate modules.

## German MLang 5R24

## German Linguistic Studies MLang 5D7H

## German and Spanish MLang 5B75

## German and Spanish Linguistic Studies MLang 1R57

## French and German MLang 5XP9

## French and German Linguistic Studies MLang 31C7

## Content

This is a new and distinctive programme which we are offering in addition to our BA Modern Languages programme.

The MLang leads to a full Masters award and offers you the same choice and flexibility as the BA programmes together with a full year abroad. It also has the same funding options.

The first two years of the programme run alongside the equivalent BA pathways although in your second year, you take a separate module preparing you for academic study on your year abroad. During your third year you will study at one of Southampton's partner institutions abroad and will also take a number of online courses from Southampton. We also strongly recommend that you take a three month work or study placement in a second country if you are studying two languages.

In your final year, in addition to your language module/s, you can choose from a range of Masters modules, including specialist modules in translating and interpreting, language education, and transnational studies. At the end of the year, you complete a research dissertation guided and supported by your academic supervisor.

## Key information

Duration: 4 years

## Typical entry requirements

- A levels: AAA, including grade A in at least one relevant language
- IB: 36 points with 18 at the Higher Level, including 6 at higher level in at least one relevant language

## Programme structure

### Modules

MLang students can select from BA modules in their chosen language(s).

In addition, during the final year of study, students will be able to select from an extensive range of modules from the Modern Languages Masters programs:

[www.southampton.ac.uk/ml/postgraduate/index.page](http://www.southampton.ac.uk/ml/postgraduate/index.page)

# BA Language & Society QL33

## Content

This degree combines the two popular strands of linguistic studies and social and political studies. You will study two languages; one can be from scratch, and you will spend your third year abroad. There is also the possibility of studying a non-European language such as Chinese, Japanese or Arabic.

## Key information

Duration: 4 years

## Typical entry requirements

- A levels: AAB, including A in one language
- IB: 34 points, 17 at higher level, including 6 at higher level in one language

Applicants from outside the UK who do not meet current entry requirements may be able to join the International Foundation Year [www.southampton.ac.uk/ify](http://www.southampton.ac.uk/ify)

## Programme structure

### Modules

Students can select from modules in their chosen language(s).

## Find out more

Tel: +44 (0)23 8059 9339  
Email: [ugapply.fh@southampton.ac.uk](mailto:ugapply.fh@southampton.ac.uk)  
[www.southampton.ac.uk/ml](http://www.southampton.ac.uk/ml)

# BA Language Learning Q100

## Content

Available to non-native English speakers only. You will study two languages; one of them may be a new language to you. You will also take a range of courses in linguistics and applied linguistics, gaining a broad understanding of how different languages are structured and used. You will study in detail how languages are acquired and taught.

You will spend your third year abroad in a French-, German-, Spanish- or Portuguese-speaking country or you could choose Italy or China.

## Key information

Duration: 4 years

## Typical entry requirements

- A levels: AAB, including A in one language
- IB: 34 points, 17 at higher level, including 6 at higher level in one language

Applicants from outside the UK who do not meet current entry requirements may be able to join the International Foundation Year [www.southampton.ac.uk/ify](http://www.southampton.ac.uk/ify)

## Programme structure

### Modules

Students can select from modules in their chosen language(s).

## Find out more

Tel: +44 (0)23 8059 9339  
Email: [ugapply.fh@southampton.ac.uk](mailto:ugapply.fh@southampton.ac.uk)  
[www.southampton.ac.uk/ml](http://www.southampton.ac.uk/ml)



“As a member of the anti-fraud team for European websites, Spanish is vital and the communication skills I gained from my history degree enable me to put my point across effectively to both managers and directors”

**Arran Hobday**  
BA History and Spanish, 2011 Investigation Specialist, Amazon



# BA Languages & Contemporary European Studies <sup>R900</sup>

## Content

This innovative programme is one of the few European studies courses based in a modern languages programme. You will study the history and politics of European integration, with a particular focus on political, legal and economic structures and major themes related to society, ideology and culture. In addition, you will study two languages from French, German, Spanish, Portuguese and Italian. You will need an A level in one language; the other can be started from scratch.

You will normally spend your third year abroad in France, Germany, Italy, Spain or Portugal. There is also the possibility of spending the year in China or Latin America.

## Key information

Duration: 4 years

## Typical entry requirements

- A levels: AAB, including A in one language
- IB: 34 points, 17 at higher level, including 6 at higher level in one language

Applicants from outside the UK who do not meet current entry requirements may be able to join the International Foundation Year [www.southampton.ac.uk/ify](http://www.southampton.ac.uk/ify)

## Programme structure

### Modules

Students can select from modules in their chosen language(s).

In addition, there are core modules in:

- Political Systems
- Reading the City
- Transformations of the Modern World
- The EU and European Identity

Students can select from modules in their chosen language(s).

## Find out more

Tel: +44 (0)23 8059 9339  
Email: [ugapply.fh@southampton.ac.uk](mailto:ugapply.fh@southampton.ac.uk)  
[www.southampton.ac.uk/ml](http://www.southampton.ac.uk/ml)

# BA Modern Languages <sup>R990</sup>

## Content

This course is intended for proven talented linguists and allows you to study three languages. Two must be at advanced level and one can be from scratch. Choose from Arabic, French, German, Italian, Spanish, Portuguese, English (available to non-native English speakers only), Chinese, Japanese and Russian. Except for English, all of the languages can be studied from scratch. You may choose one or two optional modules per semester relating to the languages you are studying. You will spend your third year abroad in a French-, German-, Italian-, Spanish- or Portuguese speaking country.

## Key information

Duration: 4 years

## Typical entry requirements

- A levels: AAB, including AB in two languages. Strong candidates with grade A in AS Level for the second language will be considered
- IB: 34 points, 17 at higher level, including 6 at higher level in two languages

Applicants from outside the UK who do not meet current entry requirements may be able to join the International Foundation Year [www.southampton.ac.uk/ify](http://www.southampton.ac.uk/ify)

## Programme structure

### Modules

Students can select from modules in their chosen language(s).

# BA Spanish <sup>R401</sup> (Linguistic Studies)

## Content

In the BA Spanish (Linguistic Studies) degree, your language learning is complemented by modules in linguistics.

Linguistics describes an approach to the study of language which involves detailed, principled (sometimes termed 'scientific') analysis. The scope of linguistics is broad and varied, accommodating many different facets of language structure, language use, language change, language acquisition, and language teaching. In linguistics modules you will have the opportunity to explore many of these subfields of linguistics, from the 'nuts and bolts' of language (such as the articulations of the mouth involved in speech, and the principles underlying the structure of sentences), to how its properties are acquired as a first language and as a second language; from how language varies according to its speakers, to the social contexts in which discourse is embedded.

## Key information

Duration: 4 years

## Typical entry requirements

- A levels: AAB, including A in Spanish
- IB: 34 points, 17 at higher level, including 6 at higher level in Spanish

Applicants from outside the UK who do not meet current entry requirements may be able to join the International Foundation Year [www.southampton.ac.uk/ify](http://www.southampton.ac.uk/ify)

## Programme structure

### Modules

Students can select from modules in their chosen language(s).

## Find out more

Tel: +44 (0)23 8059 9339  
Email: [ugapply.fh@southampton.ac.uk](mailto:ugapply.fh@southampton.ac.uk)  
[www.southampton.ac.uk/ml](http://www.southampton.ac.uk/ml)

# BA German & Spanish <sup>RRF4</sup> (Linguistic Studies)

## Content

In the BA German and Spanish (Linguistic Studies) degree, your language learning is complemented by modules in linguistics. The scope of linguistics is broad and varied, accommodating many different facets of language structure, language use, language change, language acquisition, and language teaching. In linguistics modules you will have the opportunity to explore many of these subfields of linguistics, from the 'nuts and bolts' of language (such as the articulations of the mouth involved in speech, and the principles underlying the structure of sentences), to how its properties are acquired as a first language and as a second language; from how language varies according to its speakers, to the social contexts in which discourse is embedded.

Strong candidates with grade A at A level in either German or Spanish but no previous knowledge of the other language may apply for this programme. Students on this route would study either accelerated German or Spanish language classes from beginner's level.

## Key information

Duration: 4 years

## Typical entry requirements

- A levels: AAB, including A, B in German and Spanish
- IB: 34 points, 17 at higher level, including 6 at higher level in German and Spanish

Applicants from outside the UK who do not meet current entry requirements may be able to join the International Foundation Year [www.southampton.ac.uk/ify](http://www.southampton.ac.uk/ify)

## Programme structure

### Modules

Students can select from modules in their chosen language(s).

# Language Studies

(International applicants only)

## Content

These innovative programmes are some of the few European studies courses based in a modern languages programme. You will study the history and politics of European integration, with a particular focus on political, legal and economic structures and major themes related to society, ideology and culture. The programme is available for EU and international students who wish to learn about British culture, society and the English language, with advanced English as the first language. In addition, you may study one language from French, German, Spanish, Portuguese and Italian, which you can start from scratch. There is also the possibility of studying a non-European language such as Chinese, Japanese, Arabic and Russian.

**BA Applied English Language Studies Q310**

**BA Languages and Contemporary European Studies (English) R9Q3**

## Key information

Duration: 3 years

## Typical entry requirements

- A levels: AAA, including grade A in at least one relevant language
- IB: 36 points with 18 at the Higher Level, including 6 at higher level in at least one relevant language

Applicants from outside the UK who do not meet current entry requirements may be able to join the International Foundation Year [www.southampton.ac.uk/ify](http://www.southampton.ac.uk/ify)

## Programme structure

### Modules

- English Language
- Introduction to British Life and Institutions
- Academic skills for Modern Language students
- Introduction to the English Language in its global context
- Elements of Linguistics: Sound, Structure and Meaning
- Applications of Linguistics
- Globalisation: Economics, Politics, Culture and the Nation State
- Auto/biography, Testimony and Biography
- Discourse Analysis
- Sound and Voice
- Ethnography for Language Learners
- The EU and European Identity
- Psycholinguistics
- Syntax: Studying Language Structure
- Teaching English as a Second/Foreign Language
- Multilingualism

### Typical final year modules include:

- Translation: Theory and Practice
- Second Language Acquisition Theory
- Advanced Syntax
- Language Teaching Theory and Practice
- Public Service Interpreting
- Exploring Talk
- Writing in a Second Language

# Integrated Masters in Languages (MLang)

## Choose Southampton

- Gain a Masters qualification in 4 years with full Year Abroad.
- Same funding options as for BA programmes (reduced fee on Year Abroad).
- Option to specialise in certain areas (e.g. translation, interpreting, language education) at various points in the degree.
- Study one or two languages, one from beginner's level.
- Pathways allow you to choose from a range of undergraduate and postgraduate modules.

**French Linguistic Studies MLang 5A9V**

**French and German Linguistic Studies MLang 31C7**

**French and Spanish**

**Linguistic Studies MLang 1T67**

**German Linguistic Studies MLang 5D7H**

**German and Spanish**

**Linguistic Studies MLang 1R57**

**Languages and Contemporary**

**European Studies MLang 1E45**

**Language Learning MLang 5M2W**

**Language and Society MLang 5XU3**

**Spanish Linguistic Studies MLang 1B6S**

## Content

This is a new and distinctive programme which we are offering in addition to our BA Modern Languages programme. The MLang leads to a full Masters award and offers you the same choice and flexibility as the BA programmes together with a full year abroad. It also has the same funding options.

The first two years of the programme run alongside the equivalent BA pathways although in your second year, you take a separate module preparing you for academic study on your year abroad. During your third year you will study at one of Southampton's partner institutions abroad and will also take a number of online courses from Southampton. We also strongly recommend that you take a three month work or study placement in a second country if you are studying two languages.

In your final year, in addition to your language module/s, you can choose from a range of Masters modules, including specialist modules in translating and interpreting, language education, and transnational studies. At the end of the year, you complete a research dissertation guided and supported by your academic supervisor.

## Key information

Duration: 4 years

## Typical entry requirements

- A levels: AAA
- IB: 36 points with 16 at the Higher Level

## Programme structure

### Modules

MLang students can select from BA modules in their chosen language(s).

In addition, during the final year of study, students will be able to select from an extensive range of modules from the Modern Languages Masters programs: [www.southampton.ac.uk/ml/postgraduate/index.page](http://www.southampton.ac.uk/ml/postgraduate/index.page)

## Find out more

Tel: +44 (0)23 8059 9339  
Email: [ugapply.fh@southampton.ac.uk](mailto:ugapply.fh@southampton.ac.uk)  
[www.southampton.ac.uk/ml](http://www.southampton.ac.uk/ml)

## Find out more

Tel: +44 (0)23 8059 9339  
Email: [ugapply.fh@southampton.ac.uk](mailto:ugapply.fh@southampton.ac.uk)  
[www.southampton.ac.uk/ml](http://www.southampton.ac.uk/ml)



## BA Spanish R400

### Content

You will experience the rich diversity of Spanish cultures, develop your language skills and increase your understanding of the cultures, languages and history of Spain and Latin America. You will be able to choose a range of optional modules from linguistics, politics, history and cultural studies among others. You will spend your year abroad in the Spanish-speaking country of your choice where you could be an English language assistant in a school, studying at one of our partner universities or on a work placement.

### Key information

Duration: 4 years

### Typical entry requirements

- A levels: AAB, including A in Spanish
- IB: 34 points, 17 at higher level, including 6 at higher level in Spanish

Applicants from outside the UK who do not meet current entry requirements may be able to join the International Foundation Year [www.southampton.ac.uk/ify](http://www.southampton.ac.uk/ify)

### Programme structure

#### Modules

- Spanish Language
- Introduction to the Portuguese-Speaking World
- History and Politics of the Hispanic World
- The Languages of the Spanish-Speaking World
- Academic skills for Modern Language students
- Narrative and Cultural Identity in the Hispanic World
- Elements of Linguistics: Sound, Structure and Meaning
- Gender, Race and Nation in Modern Latin America
- Myths and Realities of Contemporary Spain
- Power and Discourse in Spanish-speaking Societies
- Ethnography for Language Learners
- Teaching English as a Second/Foreign Language
- Culture and Society in Portugal and Brazil
- High, Popular, Mass Culture in Modern Spain and Latin America

## Find out more

Tel: +44 (0)23 8059 9339  
Email: [ugapply.fh@southampton.ac.uk](mailto:ugapply.fh@southampton.ac.uk)  
[www.southampton.ac.uk/ml](http://www.southampton.ac.uk/ml)

## BA Spanish / Portuguese & Latin American Studies RTK7

### Content

Our Latin American Studies programme enriches formal instruction with experiential learning abroad. You will develop a comprehensive understanding of Latin America and a rich knowledge of the global processes affecting the region and its people. You will develop your practical language skills in Spanish and Portuguese and choose optional modules from politics, history, cultural studies and Spanish sociolinguistics among others. It is possible to start this degree with no previous knowledge of one of the two languages. Strong candidates with grade A in one language but no previous knowledge of Spanish or Portuguese will be considered for accelerated language courses.

### Key information

Duration: 4 years

### Typical entry requirements

- A levels: AAB, including A in Spanish
- IB: 34 points, 17 at higher level, including 6 at higher level in Spanish

Applicants from outside the UK who do not meet current entry requirements may be able to join the International Foundation Year [www.southampton.ac.uk/ify](http://www.southampton.ac.uk/ify)

### Programme structure

#### Modules

- Spanish language
- Another language or a module from another academic unit
- Introduction to the Portuguese-Speaking World
- History and Politics of the Hispanic World
- The Languages of the Spanish-Speaking World
- Narrative and Cultural Identity in the Hispanic World
- Elements of Linguistics: Sound, Structure and Meaning
- Globalisation: Economics, Politics, Culture and the Nation State
- Gender, Race and Nation in Modern Latin America
- Power and Discourse in Spanish-speaking Societies
- Culture and Society in Portugal and Brazil
- Myths and Realities of Contemporary Spain

## BA Spanish & Portuguese RR45

### Content

We offer a wide range of courses in Portuguese and Brazilian studies, focusing on the 19th and 20th centuries. We are strong in several major areas of Latin American studies, in particular, cultural studies, sociolinguistics, history and politics. Latin American courses are available to all students who study Spanish and/or Portuguese, and you may choose to spend your third year in Brazil. Strong candidates with grade A at A level in either Spanish or Portuguese but no previous knowledge of the other language may apply for this programme. Students on this route would study either accelerated Spanish or Portuguese language classes from beginner's level.

### Key information

Duration: 4 years

### Typical entry requirements

- A levels: AAB, including A in Spanish or Portuguese
- IB: 34 points, 17 at higher level, including 6 at higher level in Spanish or Portuguese

Applicants from outside the UK who do not meet current entry requirements may be able to join the International Foundation Year [www.southampton.ac.uk/ify](http://www.southampton.ac.uk/ify)

### Programme structure

#### Modules

- Spanish Language
- Portuguese Language
- Introduction to the Portuguese-Speaking World
- Academic skills for Modern Language students
- History and Politics of the Hispanic World
- The Languages of the Spanish-Speaking World
- Narrative and Cultural Identity in the Hispanic World
- Approaches to German-Jewish Literature
- Culture and Society in Portugal and Brazil

## Find out more

Tel: +44 (0)23 8059 9339  
Email: [ugapply.fh@southampton.ac.uk](mailto:ugapply.fh@southampton.ac.uk)  
[www.southampton.ac.uk/ml](http://www.southampton.ac.uk/ml)

## BA Politics & Spanish/ Portuguese & Latin American Studies RL42

### Content

The study of politics helps us to understand the forces shaping global, national and local politics and why our world is as it is today. How does globalisation affect the distribution of political power? Our BA Politics and Spanish/Portuguese will provide you with the opportunity to explore not only political issues in the Hispanic and Luso-Brazilian world but also enable you to become proficient in both languages. You will spend your third year abroad in a Spanish- or Portuguese-speaking country, widening your knowledge of the culture, language and politics.

### Key information

Duration: 4 years

### Typical entry requirements

- A levels: AAB, including A in Spanish
- IB: 34 points, 17 at higher level, including 6 at higher level in Spanish

Applicants from outside the UK who do not meet current entry requirements may be able to join the International Foundation Year [www.southampton.ac.uk/ify](http://www.southampton.ac.uk/ify)

### Programme structure

#### Modules

- Political Systems
- Issues in Contemporary Politics
- Introduction to Political Theory
- Introduction to International Relations
- Spanish Language
- Portuguese Language
- History and Politics of the Hispanic World
- The Languages of the Spanish-Speaking World
- Narrative and Cultural Identity in the Hispanic World

# BA Spanish <sup>R430</sup> (The Spanish-Speaking World)

## Content

This programme explores the major themes in Spanish and Spanish American history and politics, and issues surrounding the role of language in society, particularly in the nation-building processes. You will have the opportunity to concentrate on your own particular interests, selecting from a range of more specialised modules. You will spend your third year in Spain or Latin America.

## Key information

Duration: 4 years

## Typical entry requirements

- A levels: AAB, including A in Spanish
- IB: 34 points, 17 at higher level, including 6 at higher level in Spanish

Applicants from outside the UK who do not meet current entry requirements may be able to join the International Foundation Year [www.southampton.ac.uk/ify](http://www.southampton.ac.uk/ify)

## Programme structure

### Modules

- Spanish Language
- History and Politics of the Hispanic World
- The Languages of the Spanish-Speaking World
- Reading the City
- Introduction to the Portuguese-Speaking World
- Academic skills for Modern Language students
- Narrative and Cultural Identity in the Hispanic World
- Elements of Linguistics: Sound, Structure and Meaning
- Gender, Race and Nation in Modern Latin America
- Power and Discourse in Spanish-speaking Societies

# BSc Management Sciences & Spanish <sup>NR24</sup>

## Content

This programme provides training in the application of management science, particularly in financial organisations, as well as the underpinning concepts, techniques and approaches used in financial modelling. In addition, it provides language proficiency training, with emphasis on widening your cultural and social awareness of the Spanish and Latin American countries. You will spend your third year abroad in a Hispanic country of your choice, with the option of participating in a work placement in that country. GCSE mathematics at grade B is required.

## Key information

Duration: 4 years

## Typical entry requirements

- A levels: AAB, including A in Spanish
- IB: 34 points, 17 at higher level, including 6 at higher level in Spanish

Applicants from outside the UK who do not meet current entry requirements may be able to join the International Foundation Year [www.southampton.ac.uk/ify](http://www.southampton.ac.uk/ify)

## Programme structure

### Modules

- Introduction to Management
- Management Analysis
- Economics for Management
- Information Systems and Information Technology
- Managerial Decisions
- European Business Environment
- Spanish Language
- History and Politics of the Hispanic World
- The Languages of the Spanish-Speaking World
- Academic skills for Modern Language students
- Narrative and Cultural Identity in the Hispanic World

# Integrated Masters in Languages (MLang)

## Choose Southampton

- Gain a Masters qualification in 4 years with full Year Abroad.
- Same funding options as for BA programmes (reduced fee on Year Abroad).
- Option to specialise in certain areas (e.g. translation, interpreting, language education) at various points in the degree.
- Study one or two languages, one from beginner's level.
- Pathways allow you to choose from a range of undergraduate and postgraduate modules.

## Spanish MLang <sup>5T2A</sup>

## Spanish and Latin American Studies MLang <sup>1G1S</sup>

## Spanish Linguistic Studies MLang <sup>1B6S</sup>

## Spanish and Portuguese MLang <sup>1JT6</sup>

## The Spanish-speaking World MLang <sup>1W4D</sup>

## French and Spanish Linguistics Studies MLang <sup>1T67</sup>

## French and Portuguese MLang <sup>5F98</sup>

## French and Spanish MLang <sup>5Y87</sup>

## German and Spanish MLang <sup>5B75</sup>

## German and Spanish Linguistic Studies MLang <sup>1R57</sup>

## Content

This is a new and distinctive programme which we are offering in addition to our BA Modern Languages programme. The MLang leads to a full Masters award and offers you the same choice and flexibility as the BA programmes together with a full year abroad. It also has the same funding options.

The first two years of the programme run alongside the equivalent BA pathways although in your second year, you take a separate module preparing you for academic study on your year abroad. During your third year you will study at one of Southampton's partner institutions abroad and will also take a number of online courses from Southampton. We also strongly recommend that you take a three month work or study placement in a second country if you are studying two languages.

In your final year, in addition to your language module/s, you can choose from a range of Masters modules, including specialist modules in translating and interpreting, language education, and transnational studies. At the end of the year, you complete a research dissertation guided and supported by your academic supervisor.

## Key information

Duration: 4 years

## Typical entry requirements

- A levels: AAA, including grade A in at least one relevant language
- IB: 36 points with 16 at the Higher Level, including 6 at higher level in at least one relevant language

## Programme structure

### Modules

MLang students can select from BA modules in their chosen language(s).

In addition, during the final year of study, students will be able to select from an extensive range of modules from the Modern Languages Masters programs: [www.southampton.ac.uk/ml/postgraduate/index.page](http://www.southampton.ac.uk/ml/postgraduate/index.page)

## Find out more

Tel: +44 (0)23 8059 9339  
Email: [ugapply.fh@southampton.ac.uk](mailto:ugapply.fh@southampton.ac.uk)  
[www.southampton.ac.uk/ml](http://www.southampton.ac.uk/ml)

## Find out more

Tel: +44 (0)23 8059 9339  
Email: [ugapply.fh@southampton.ac.uk](mailto:ugapply.fh@southampton.ac.uk)  
[www.southampton.ac.uk/ml](http://www.southampton.ac.uk/ml)



# YOUR STUDENT EXPERIENCE

**Our six campuses all offer a friendly, vibrant and diverse atmosphere for work and leisure.**

## Campuses

All Humanities courses, with the exception of Music, are based at Avenue campus, a short walk away from the main Highfield campus. Here, you'll find a range of amenities including Avenue Library, the Languages Resource Centre, the Film Suite, quiet work spaces, tennis courts, a café with indoor and outdoor seating, and our purpose built £3m Archaeology Building, all set on the edge of Southampton Common.

Highfield Campus caters for most of our academic courses. Incorporating state-of-the-art research and teaching facilities, it boasts new and refurbished student facilities such as SUSU, the University of Southampton Student's Union, and the Jubilee Sports Centre.

Southampton General Hospital is home to University Hospital Southampton NHS Foundation Trust and is a major centre for teaching and research in association with the University.

The National Oceanography Centre Southampton is our waterfront campus and is one of the world's leading research centres for the study of ocean and earth sciences.

Winchester School of Art is located 12 miles north of Southampton, in Winchester city centre. The campus provides purpose designed studios and workshops, an extensive specialist library, Students' Union facilities, a café and a well-stocked art supplies shop.

Our branch campus for engineering is in EduCity, Iskandar in Malaysia and benefits from innovative world-class facilities for engineering and full access to the learning resources at our UK campuses. It offers undergraduate students the opportunity to study in a safe international environment.

## Social life

Run by students for students, SUSU, the University of Southampton Students' Union offers a wide range of services and opportunities for you to get the most out of your free time.

- Experience Your Freshers' – a week full of activities to help you settle in
- Discover a new talent: try some of our 78 sports clubs from archery to Taekwondo
- Join one of our 180 societies from performing arts to politics
- Help local people: get involved in community volunteering projects and fundraising
- Socialise with friends in one of our bars or cafés on our campuses and in our halls of residences
- See high-profile acts from Pixie Lott to Greg James
- Catch a film in our 330-seat cinema
- Dance the night away in our 1,700-capacity nightclub
- Become a DJ or director at Surge Radio and SUSUtv
- Try out journalism for the Wessex Scene or The Edge magazines

## Accommodation

Get the best out of your student life; stay in one of our 6,000 student rooms in halls. You can choose from a range of room types that includes a new development of over 1,000 rooms in Southampton city centre.

Live in either self-catered halls of residence with well-equipped communal kitchens, or part-catered accommodation where you enjoy the benefits of breakfast and evening meals throughout the week, plus some other meals at the weekend.

If you are a registered first-year undergraduate student new to the University, starting a full-time course, with no dependents, you will be guaranteed an offer of halls accommodation as long as you fulfil the full criteria of the guarantee, which includes applying before 1 August.

To uphold the guarantee, in years of exceptional demand we may offer accommodation in a twin shared room at the start of the academic year for a short, temporary period of time.

For more information on our guarantee to you, visit [www.southampton.ac.uk/guarantee](http://www.southampton.ac.uk/guarantee)

## Find out more

University Residences Tel: +44 (0)23 8059 5959  
Email: [accommodation@southampton.ac.uk](mailto:accommodation@southampton.ac.uk)  
[www.southampton.ac.uk/accommodation](http://www.southampton.ac.uk/accommodation)



You can socialise with friends in one of our bars or cafés on campus and in our halls of residences, as well as in the city of Southampton

# APPLYING AND FUNDING

We realise that going to university is a significant investment, so we'll ensure you have all the information you need to make an informed decision.

## General entry requirements

To apply for undergraduate study you must satisfy our general entry requirements and any specific requirements of your chosen programme. Typical entry requirements for applicants with GCE A-levels can be found online.

## How to apply

Apply online at [www.ucas.com](http://www.ucas.com), the Universities and Colleges Admissions Service (UCAS). Our UCAS code name is SOTON and our number is S27. All students should apply between 1 September and mid-January. If you are an international student from outside the UK or EU, we may consider your application up until the end of June. However, we cannot guarantee there will be vacancies on our courses after the January deadline.

## Admissions policy

1. The University of Southampton will:
  - recruit students from a wide range of backgrounds, who we believe have the potential to complete their programmes successfully
  - attract applicants who enjoy the challenge of forward thinking, the excitement of research findings and our high education standards
  - foster a diverse learning community in which our students will meet people from different cultures, thereby enhancing their skills of critical reasoning, teamwork and communication
2. The University is committed to a system of admissions that ensures fairness, transparency and equal opportunities within the legal framework of the UK and best practice. All reasonable effort will be made to ensure that no prospective or existing student is unreasonably treated.

## Tuition fees and funding

The University will set fees for the next academic year when the government establishes limits for tuition fees. For 2014/15, the University set the tuition fee at £9,000, but we offer a large number of generous fee waivers and bursaries for eligible students. For students from lower income families, these financial packages will be based on household income supplied to us by the Student Loans Company.

Your tuition fee may cover compulsory course costs, such as field trips and laboratory clothing; however a contribution may be necessary towards certain elements. Please check with the Admissions team for more details.

Please visit our website for the latest information on tuition fees.

If you are a UK student starting a higher education course, you can apply for loans to help pay for both fees and maintenance. For more details, visit [www.southampton.ac.uk/money](http://www.southampton.ac.uk/money)

## Scholarships and bursaries

We offer a variety of scholarships and progression awards to the most talented students across our subject areas. For full eligibility criteria and up-to-date information, visit our website [www.southampton.ac.uk/scholarships](http://www.southampton.ac.uk/scholarships)

We also offer a generous range of bursaries designed to help UK undergraduate students in the most financial need. For more details and up-to-date information, visit [www.southampton.ac.uk/bursaries](http://www.southampton.ac.uk/bursaries)

## Extended project qualification (EPQ)

All applicants undertaking an EPQ will be made an alternative offer alongside our traditional offer. The alternative offer will be one grade reduced from our traditional offer in exchange for an A in the EPQ. For example, the traditional offer for History is AAB. Applicants presenting an EPQ will be made an alternative offer of ABB, plus an A in the EPQ.

## Find out more

Tel: +44 (0)23 8059 4732  
Email: [admissions@southampton.ac.uk](mailto:admissions@southampton.ac.uk)  
[www.southampton.ac.uk/fees](http://www.southampton.ac.uk/fees)

# INTERNATIONAL STUDENTS

Join us and students from more than 130 different countries at Southampton.

Living and studying in a different country has its own unique challenges. We make student entry straightforward, offer attractive scholarships to eligible applicants, help you settle into your new life and advise you on all aspects of living in the UK.

Our network of services and advisors ensure that your studies and life at Southampton is as productive and stress-free as possible.

## International Office

Staff from our International Office attend educational exhibitions around the world as well as making numerous visits overseas and to colleges in the UK. If you are unable to visit us in Southampton, make sure you book an appointment to meet us at one of the exhibitions or join us on a virtual open day.

You will find a quick introduction to the University on our website, which is available in other languages. You can also view web pages dedicated to 50 specific countries.

To join us on a virtual open day, visit [www.southampton.ac.uk/virtualopenday](http://www.southampton.ac.uk/virtualopenday)

## International and EU Welcome Programme

In September each year, we arrange an International and EU Welcome Programme, which helps you settle into life here. The programme includes general events to introduce you to our facilities, subject-specific events to begin your academic induction and a range of social and cultural activities.

During the programme, you will meet other undergraduate students and explore the University and the city, so that you know where to worship, relax and shop. You will also meet current international students who will be able to give you good advice.

## Meet and Greet

The Meet and Greet service from London Heathrow Airport is provided free of charge and is designed to get you to the University in time for the International and EU Welcome Programme. You can register for both the service and the Programme from July on our website.

## Visas

Before you join us, find out about the UK's immigration procedures. Do this well in advance of your arrival in the UK. Our website provides information on student visas, police registration, working in the UK and has links to other useful websites.

## English language requirements

If English is not your first language, you will need to demonstrate that you have reached a satisfactory standard in an approved English language test. For the majority of our courses we require an IELTS level of 6.5 or equivalent, achieved in the past two years. If you need to improve your English language skills, you can apply to our pre-sessional English language courses. For more information on general English Language requirements please visit our website.

## International Foundation Year

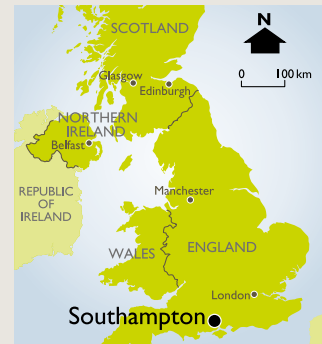
The International Foundation Year (IFY) gives International and EU students the opportunity to study at a British university. The programme provides a direct route onto a variety of undergraduate degrees at the University of Southampton for talented students who have had at least 11 or 12 years of full-time education, but do not have the full qualifications to join an undergraduate programme. For more information, visit [www.southampton.ac.uk/ify](http://www.southampton.ac.uk/ify)

## Find out more

Tel: +44 (0)23 8059 9699  
Email: [global@southampton.ac.uk](mailto:global@southampton.ac.uk)  
[www.southampton.ac.uk/international](http://www.southampton.ac.uk/international)



# HOW TO FIND US



-  University buildings
-  Halls of residence
- Transport Information**
-  Airport
-  Ferry terminal
-  Railway station
-  Coach station

## Pictured opposite

### Your campuses

1. Avenue Campus
2. Highfield Campus

### Region highlights

3. Top 15 retail destination in the UK
4. Coastal location offering a vast range of sport and leisure opportunities, with waterfront marinas, restaurants and bars



Find out more

[www.southampton.ac.uk/campuses](http://www.southampton.ac.uk/campuses)



## TERMS & CONDITIONS

Relevant web links are shown throughout the Modern Languages Undergraduate Courses. Please also consult [www.southampton.ac.uk/humanities](http://www.southampton.ac.uk/humanities) online for further details and/or any changes which have appeared since first publication of the Modern Languages Undergraduate Courses or phone +44 (0)23 8059 9339 for more information.

### Disclaimer

The University of Southampton will use all reasonable efforts to deliver advertised programmes and other services and facilities in accordance with the descriptions set out in its prospectuses, student handbooks, welcome guides and website. It will provide students with the tuition, learning support, services and facilities so described with reasonable care and skill.

The University, therefore, reserves the right if it considers it to be necessary to alter the timetable, location, content or method of delivery of events provided such alterations are reasonable.

### Financial or other losses

The University will not be held liable for any direct or indirect financial or other losses or damage arising from changes

### © University of Southampton 2014

This information can be made available, on request, in alternative formats such as electronic, large print, Braille or audio tape, and in some cases, other languages. Please call +44 (0)23 8059 7726 to request an alternative format.

made to the event timetable, location, content or method of delivery of various services and facilities set out herein.

### Force majeure

The University will not be held liable for any loss, damage or expense resulting from any delay, variation or failure in the provision of services and facilities set out herein, arising from circumstances beyond the University's reasonable control, including (but not limited to) war or threat of war, riot, civil strife, terrorist activity, industrial dispute, natural or nuclear disaster, adverse weather conditions, interruption in power supplies or other services for any reason, fire, boycott and telecommunications failure.

In the event that such circumstances beyond the reasonable control of the University arise, it will use all reasonable endeavours to minimise disruption as far as it is practical to do so.