

SAMPLE

CONTENTS

- 04 Make the most of your day
- 06 Your guide to student life
- 08 Applying and funding
- 10 Information fairs
- 11 General events
- 12 Subject talks
- 14 Subject drop-in sessions
- 16 Additional subject events
- 18 Travel details
- 19 Accommodation
- 20 Maps
- 22 Facts and figures

Find out more
www.southampton.ac.uk/visit

Choosing the right place to study is an important decision. Join us, an institution in the top one per cent of world universities* and a community of some of the most talented academics and students from around the world. Our cutting-edge research directly informs your education.

We are committed to ensuring that the most talented and ambitious students can make this investment in their future, whatever their financial circumstances; we are continually developing our support packages that include fee waivers and bursaries.

We provide opportunities for you to design your own education by taking modules outside of your chosen discipline, and on some of our degree courses, a 'minor' subject alongside your main degree. You will also have the chance to develop the professional skills and global awareness that employers are really looking for by studying abroad or doing a work placement.

Choose to match your ambition to ours. Come to Southampton and take advantage of a rich and transformative educational experience that enables you to develop and achieve your ambitions, fulfil your potential and make a positive contribution to the world.

TOP 1%
global university*

94%
of Southampton
graduates entered
employment or
further study**

**OVER
24,500**
students enrolled at
our campuses in the
UK and Malaysia

200,000
graduates spanning
180 countries

*QS World University Rankings, 2015/16

**Destination of Leavers from Higher Education (DLHE), 2013/2014

MAKE THE MOST OF YOUR DAY

At Southampton, we can help you reach your goals. Your ambition, your talent and our support is a winning combination. The Open Day is the first step on your university journey; here are our top tips to help you get the most from your day.

Before you arrive

➔ **Download our Open Day app**

With our Open Day app, you can browse the subject talks and tours, plan your journey, browse cafés and restaurants on campus, and get free shuttle bus travel between campuses during the Open Day. Search 'MySouthampton' on your app store to download the app.

➔ **Choose your talks and plan your day**

To get the most out of your day, take some time before the Open Day to make a note of all the subject talks, drop-in sessions and tours you want to attend, and their locations. You can do this via the app or our downloadable day planner. On the timetables on pages 11–17 of this programme, we have shown the locations of all the events so you can allow yourself time to travel between them. See page 18 for maps.

On the day

➔ **Check in**

When you arrive on campus, please visit one of the check-in marquees. These are located at Highfield Campus, Avenue Campus, Southampton Boldrewood Innovation Campus and National Oceanography Centre Southampton (see map on page 20), where our student ambassadors will be on hand to help.

You can also check in via the Open Day app. All you need is your unique booking number.

➔ **Take advantage of the free Wi-Fi**

You can access free Wi-Fi on the Highfield Campus via The Cloud. Connecting to the service is simple.

1. Make sure your Wi-Fi is on
2. Select 'Wi-Fi Guest' from the available network list
3. Open your browser, press refresh and follow the on-screen instructions to register or log on

➔ **Find us on social media**

Follow the University on Twitter and Instagram to stay up to date with the latest Open Day news, photos and information. Share your experience with us using #UoSOpenDay

After your visit to campus

➔ **See the city**

Once you have finished your Open Day, why not head into Southampton? The city is only a short bus ride from all of our campuses. Remember you can use the free shuttle bus service; you just need to show the bus driver your Open Day programme or the ticket tile on the Open Day app.

➔ **Take the survey**

After the Open Day, you will receive a survey by email. We would love to hear what you think, so please do send us your comments.

- 01 Visit our information fair
- 02 Take a campus tour
- 03 Check in at one of our marquees
- 04 Ask our student ambassadors about life at Southampton
- 05 Be inspired by a subject talk

A student is interacting with a staff member at a booth with a blue 'Icom' banner. Other people are visible in the background.

01

A group of students is walking on a green lawn. One student in an orange 'Southampton' t-shirt is holding a sign that says 'Follow me.' Another student in a white 'EAST COAST' t-shirt is walking alongside him.

02

A student is looking at a smartphone while another student in a pink 'Southampton' t-shirt stands next to a table covered with blue bags and brochures. The bags have 'Southampton AMBITION' printed on them.

Two students are standing outdoors, talking. One is holding a brochure. They are in front of a brick building.

04

A group of students is sitting in a lecture hall, facing a screen that displays 'Find out more' and 'Please talk to our staff and students available outside'.

05

#UoSOpenDay

03

4

5

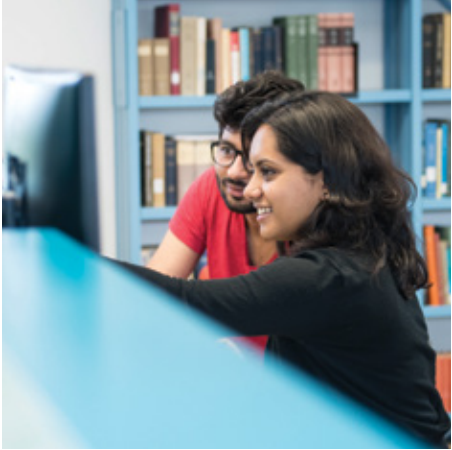
YOUR GUIDE TO STUDENT LIFE

At Southampton, we offer you a fantastic student experience. Life on- and off-campus is vibrant and dynamic. The University provides a wealth of social and leisure activities and the city of Southampton offers a lively nightlife, a cultural quarter and green, open spaces to enjoy.

- ➔ Join a thriving campus university in a dynamic, accessible city on the south coast
- ➔ Experience Freshers', a full programme of activities and events to help you settle in, meet new people and find out more about university life
- ➔ Live in halls of residence or private rented accommodation in the city
- ➔ Enjoy green spaces, both on- and off-campus
- ➔ Join a sports club; many cater for all abilities, from beginners through to Olympic athletes
- ➔ Study a module not directly linked to your degree such as global health or intercultural communications



01



02

- 01 Rooms to suit you
- 02 Group study spaces
- 03 An unrivalled range of watersports
- 04 Common People 2015 Festival on Southampton Common
- 05 Variety of places to eat and drink
- 06 Historic city



03



04



05



06

Union Southampton

When you come to Southampton, you will automatically become a member of Union Southampton, which is run for students by students. With over 350 student groups (sports clubs and societies), from sailing, archery, quidditch, and performing arts to debating and life-drawing, there is plenty on offer for you to discover a new talent.

Accommodation

Our halls provide you with a safe and comfortable home-away-from-home that is excellent value for money, and in great locations close to our campuses. With over 7,000 rooms our halls have excellent facilities, a guaranteed offer of accommodation (subject to conditions, including applying by 1 August) in your first year at the University, and a fantastic environment in which to experience student life. Find out more in our accommodation brochure, which you can collect from our information fair during the Open Day.

Campus life

We have five campuses in Southampton, one in Winchester and our engineering campus in Malaysia. Wherever you are based, our campuses will form a major part of your student experience. They all benefit from a community feel and world-leading facilities. You can take advantage of great entertainment options, including world-class concerts and theatre productions, sample our music and comedy nights, bars and cinema, as well as enjoying beautiful green spaces.

Sports

Our sporting facilities are some of the best of any UK university. Your Sport and Wellbeing membership will give you access to our 25-metre swimming pool, six gyms on campus and three more in the city, over 20 grass and synthetic pitches, and much more. Why not take a self-guided tour of the Jubilee Sports centre during Open Day, to see the facilities on offer at our Highfield Campus.

A vibrant city

Southampton is one of the most lively and dynamic cities in the south of England. It has a varied and vibrant nightlife, numerous leisure facilities, superb heritage attractions, bustling marinas and great places to eat and drink. But don't just take our word for it; why not go and explore Southampton while you are here? The city is around 30 minutes' walk from Highfield campus, or a short bus ride away (see page 18 for details).

 **Find out more**
www.southampton.ac.uk/life

APPLYING AND FUNDING

We aim to attract talented students, from all backgrounds, who enjoy challenging thinking and the excitement of research-led teaching. We hope that now you have seen what we have to offer here at Southampton, you will apply to come and be part of our vibrant community. Here are our top tips on applying.

Before you apply

Before you make your application we recommend that you:

- Check our online prospectus for the latest course options and up-to-date entry requirements
- Familiarise yourself with the timeline at the foot of this page
- Read our Admissions Policy at www.southampton.ac.uk/admissions-policy

How and when to apply

- Applications should be submitted via UCAS (www.ucas.com)
- Our institution code is S27 and our code name is SOTON
- The application window opens in mid-September
- The deadline for medicine is 15 October
- The deadline for all other programmes for UK and EU applicants is 15 January

For international applicants, the deadline is 30 June, although we strongly advise you to apply as early as possible as some courses may no longer have vacancies after the January deadline

- UCAS will automatically forward your application to us and we will let you know when we have received it

Applying for deferred entry

- We welcome applications for deferred entry (starting one year later to allow you to undertake a gap year, for example)
- We consider deferred applications in the same way as other applications and in accordance with the Admissions Policy relating to the application cycle in which we receive them
- Deferred applicants must satisfy any offer conditions by 31 August in the application year

How we assess your application

We are committed to considering every application fairly. We consider your merit and potential by assessing your whole application. Specifically, we look at:

- The qualifications you already hold
- Your predicted grades in future exams
- Your personal statement – this is your chance to impress, as many other people with good predicted grades and good GCSEs will be applying for the same course as you. You need to use this space to show why you deserve to be offered a place at the university of your choice. You can get ideas from your teachers, parents, friends and websites, but make sure that the statement you submit is your own
- Your reference

UK qualifications are changing: find out what this means for you

Over the next few years, many qualifications in the UK will be changing. We are committed to ensuring that no applicant will be disadvantaged when being considered for a place at Southampton as a result of these reforms.

The reforms particularly affect GCSEs, A/AS levels, Scottish Highers/Advanced Highers and BTECs. For more details on these changes, and to read a statement outlining our approach to many of the reformed qualifications, visit our website. On our website, you will find information and a video from UCAS explaining the reforms.

For more information on applying, visit www.southampton.ac.uk/ugp/apply

Support and funding

We are committed to attracting bright, ambitious students from all backgrounds to our courses. We offer a variety of fee waivers and bursaries, and as part of our commitment to your education, we review and adjust our range of student support, in consultation with our students.

If you are a UK or EU student starting a higher education course in 2017/18, you can apply for loans to help pay for both fees and living costs. Depending on your household income, if you have a disability, or have a dependant, you may be eligible for a non-repayable grant.

If you would like a temporary job to help with your living costs, our careers service and Temp Bank advertise part-time and temporary jobs and internships available within the University and with many local employers.

We can provide all the information you need to make an informed decision about funding your studies. Find out more in our finance brochure, which you can collect during the Open Day.

SEPTEMBER 2016

Applications through UCAS begin from mid-September

15 OCTOBER 2016

Applications to UCAS for medicine need to be made by 18:00

15 JANUARY 2017

UK or EU student applications for the majority of our courses must be submitted by 18:00

EARLY MAY 2017*

If you have received all your university decisions by 31 March, you must reply by the beginning of May

JUNE 2017

Allocation and offer of rooms starts for deferred students and students with unconditional offers, who have applied for accommodation before 31 May 2017

30 JUNE 2017

International student applications for the majority of our courses must be submitted by 18:00

1 AUGUST 2017

New students must have applied for accommodation before this date

21 AUGUST 2017

All remaining conditions of your offer must be met by this date

23-24 SEPTEMBER 2017

Southampton arrivals weekend

APPLICATION AND ACCOMMODATION TIMELINE

JANUARY/FEBRUARY 2017

Accommodation application opens and goes live online

EARLY JUNE 2017*

If you have received all your university decisions by 8 May, make sure you reply by the beginning of June

LATE JUNE 2017*

If you have received all your university decisions by 5 June, you must reply by the end of June

LATE JULY 2017*

If you have received all your university decisions by 17 July, you must reply by the end of July

MIDDLE OF AUGUST 2017

After A level results, allocation of rooms to all students begins

MIDDLE OF SEPTEMBER 2017

Allocation of rooms completed

*For the latest information on specific dates, visit www.ucas.com

INFORMATION FAIRS

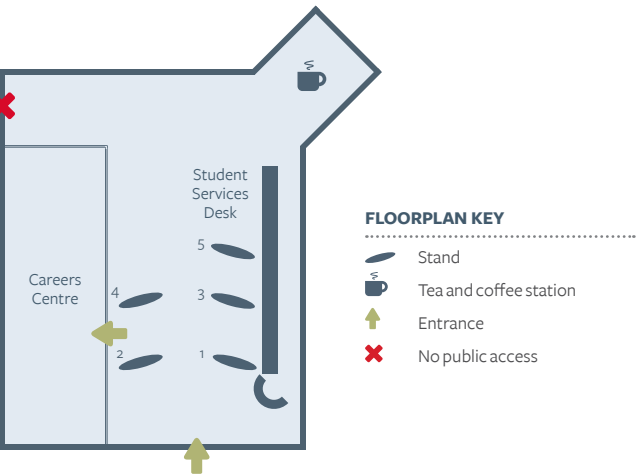
Visit our Information fair in Buildings 37 and 40 on Highfield Campus to find out all you need to know about living and studying at the University.

In Building 37, you will discover the range of support we will provide to you as a student at Southampton, including financial and learning support. Come and talk to our careers staff to find out about how studying at Southampton will enhance your career prospects, and about opportunities to study abroad as part of your degree.

In Building 40, you will be able to discover all you need to know about living in halls accommodation, the Union, what it's like to live in Southampton and how you can benefit from our community of Southampton graduates (alumni) that spans the globe.

You will also learn about ways in which you could enhance your experience at the University, such as doing a year in industry or joining our Defence Technical Undergraduate Scheme – one of only four in the UK.

BUILDING 37



STAND NUMBER/INFORMATION

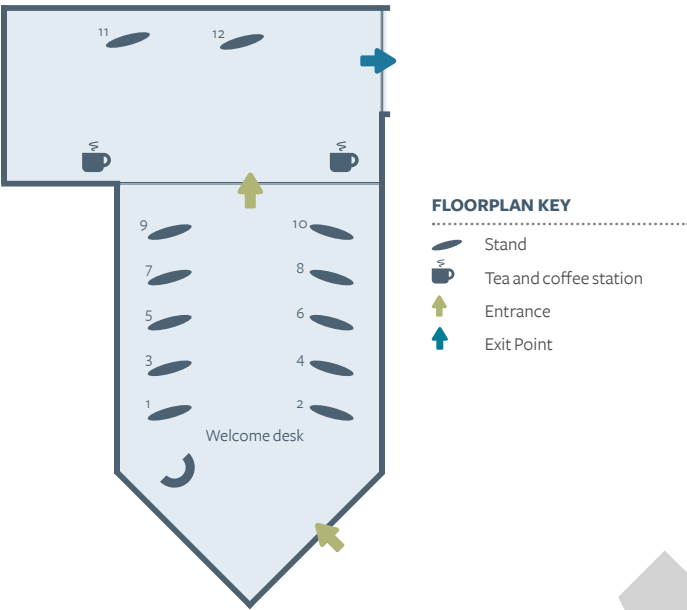
- 1 **Enabling Services (and Chaplaincy)**
We can support you with disabilities, mental health problems and specific learning difficulties from application to graduation

2 **Studying abroad**
Come and talk to our team about exchange opportunities both in an outside of Europe

3 **Student Services Centre (including Fees and Finance)**
The Student Services Centre is your one-stop-shop on campus to access support and information that is right for you throughout your student journey
- 4 **Careers and Employability**
We can help you plan your journey from first-year to graduate employment and beyond

5 **Residences Support**
The Residences Support Service is a dedicated team who are the first point of contact for halls residents out of hours. They are available every night, between 18:00 and 08:00 to offer support and advice

BUILDING 40



STAND NUMBER/INFORMATION

- 1 **Year in Industry**
Learn more about taking time out before or during university

2 **Admissions**
Pick up a prospectus and personal statement guide, and talk to us about the UCAS application process

3 **Thunderer Squadron: The Defence Technical Undergraduate Scheme**
The University's very own Defence Technical Undergraduate Scheme (DTUS) Unit, one of only four in the UK

4 **Campus IT services and facilities**
Find out what IT services are available across the University campuses and in halls. Ask about free Wi-Fi, emails and everything related

5 **Committed to sustainability**
Learn how our students get involved in reducing the University's impact on the environment

6 **Open Data**
Discover the innovative ways our dedicated Open Data Service are using the University's information
- 7 **Hampshire Constabulary**
Learn about Southampton as a safe place to live and study

8 **Union Southampton**
A brief introduction to everything the Union brings to the student experience

9 **Alumni relations**
Discover the lifelong support and opportunity that this global network can provide and find out what our students have gone on to do

10 **Southampton City Council**
Find out about developments in Southampton and the opportunities the city has to offer

11 **Accommodation**
Find out about University halls of residence or private rented accommodation

12 **Ambition wall**
Share your future ambitions with us on our ambition wall

GENERAL EVENTS

Discover more about living and studying at Southampton: find out about what it's like living in halls accommodation, discuss our flexible degree programmes with our world-leading academics at drop-ins, view our cutting-edge facilities and resources, discover how we prepare you for your future career, explore our attractive campuses and talk to our current students about their experiences. Please note that, due to high demand, some talks will be limited to prospective students only and entry will be on a first-come first-served basis.

TALKS	DURATION	TIMES	LOCATION*
Accommodation talk	30 minutes	11:00 12:30 14:00 15:30	Building 42 (the Union), level 3, cinema
Extended Project Qualification talk: preparation for university study	40 minutes	11:30 13:00 14:30 15:30	Glen Eyre halls of residence, Glen Eyre main hall
Fees and finance talk	60 minutes	10:00 11:30 13:30 15:00	Building 40, Hartley Suite
Ask the Expert: a question and answer session for parents	40 minutes	12:30	Building 40, Hartley Suite
Studying abroad information session	45 minutes	10:00 13:30 15:15	Building 34 (Education), lecture theatre
Student life with the Union: elected student officers explain how the Union can maximise the benefits of being a student at Southampton	30 minutes	10:00 12:00 15:00	Building 42 (the Union), level 3, cinema
Top tips for your personal statement talk	40 minutes	10:00 11:00 13:00 14:00 15:00	Building 35, lecture theatre 1001
		11:00 14:00 15:00	Building 35, lecture theatre 1005
Volunteering, placements and internships: an introduction to student opportunities to enhance your employability	20 minutes	10:00 11:30 13:00 14:30	Building 37, level 2, Careers Centre

DROP IN	TIMES	LOCATION*
Care leavers: drop in for advice and information on the support available	10:30–12:30 13:30–15:30	Building 34 (Education), room 2019
Chaplaincy: come and enjoy our hospitality, hear about what goes on here or just take a break in a quiet space	10:00–16:00	The Chaplaincy, house 41
Mature students: an opportunity to ask questions about studying at university and living in Southampton	10:30–12:30 13:30–15:30	Building 34 (Education), room 2019
Postgraduate study: drop in for applicants considering postgraduate study	11:00–12:00 14:00–15:00	Building 34 (Education), room 2019
Southampton Showcase: our concert is open to all. Please feel free to bring lunch and to arrive or leave between acts	13:00–13:40	Building 52 (Turner Sims)
Sport and Wellbeing: drop in to find out about the Sport and Wellbeing facilities on offer throughout your time at the University	10:00–16:00	Building 18 (Jubilee Sports Centre), reception
The Union: drop in and find out about clubs, societies, sport, advice, socialising and representation	09:00–16:00	Building 42 (the Union), concourse
The Union: chat to members of some of the clubs and societies	09:00–16:00	Outside Building 42 (the Union) – weather permitting

TOURS	TIMES	LOCATION*
Halls of residence at Glen Eyre: a selection of rooms and facilities will be open for you to view. Follow the yellow pedestrian signs from the top of University Road; please allow approximately 15 minutes to walk to Glen Eyre	09:30–16:00	Glen Eyre halls of residence, Glen Eyre Road
Halls of residence at Mayflower: a selection of rooms and facilities will be open for you to view. Catch a free bus from the interchange on Highfield Campus to the Southampton Central train station and follow yellow signage and route map on page 19; please allow approximately 30 minutes to travel to Mayflower	10:30–18:00	Mayflower halls of residence, West Park Road
Hartley Library: self-guided tour or 15-minute guided tour	10:00–16:00	Reception area, Building 12 (Hartley Library)
Highfield Campus tours (lasting approximately 30 minutes)	10:00–16:00	Marquee in front of Building 38
Sports centre: self-guided tour	10:00–16:00	Building 18 (Jubilee Sports Centre), reception

SUBJECT TALKS

Our subject talks give you an insight into what it’s like to study at Southampton, as well as information about the modules you could take and facilities on offer. Please note that, due to high demand, some talks will be limited to prospective students only and entry will be on a first-come first-served basis.

ARTS AND HUMANITIES	DURATION	TIMES	LOCATION*
Ancient history	45 minutes	13:15	Avenue Campus, Building 65
Archaeology	60 minutes	11:15 14:15	
English	45 minutes	11:15 13:15 15:15	
Film studies	45 minutes	10:15 12:15	
History	45 minutes	10:15 12:15 14:15	
Modern languages	60 minutes	10:15 12:30 14:45	
Philosophy	45 minutes	11:30 13:45	
Music	45 minutes	10:30 14:00	Building 2, level 1, room 1083

BUSINESS AND LAW	DURATION	TIMES	LOCATION*
Accounting and finance	40 minutes	11:15 13:30	Building 2, level 3, lecture theatre (3043)
Business (including business management, business analytics, business entrepreneurship, business innovation, business philosophy and business history)	40 minutes	10:30 13:30	Building 2A (Arts Annex), lecture theatre H
Law	75 minutes	11:00 13:30	Building 2, level 1, lecture theatre D (1089)
Marketing (including international marketing)	40 minutes	11:30 14:15	Building 2, level 1, lecture theatre K (1039)

ENGINEERING AND COMPUTING	DURATION	TIMES	LOCATION*
Acoustical engineering	45 minutes	10:15 13:30	Building 13 (Tizard), level 3
Aeronautics and astronautics	45 minutes	10:30 12:30 14:30	Building 7 (Lanchester), level 3, lecture theatre A
Aerospace electronic engineering	45 minutes	10:30 14:40	Building 52 (Turner Sims) Building 32, level 1, lecture theatre
Biomedical electronics			
Computer science and software engineering			
Electrical engineering			
Electrical and electronic engineering			
Electronic engineering			
Information technology in organisations			
Mechatronic engineering			
Civil engineering	45 minutes	09:30 11:00 12:30 14:00	Southampton Boldrewood Innovation Campus, Building 176, level 1
Engineering/maths/physics/geophysics foundation year	45 minutes	10:00 13:00	Building 7 (Lanchester), level 3
Mechanical engineering	45 minutes	09:30 11:30 13:30	Building 7 (Lanchester), level 3, lecture theatre A
Ship science	45 minutes	09:30 12:00 15:00	Southampton Boldrewood Innovation Campus, Building 185, level 3
Web science (computer science pathway)	25 minutes	12:30	Building 53 (Mountbatten), room 4025

MEDICINE AND HEALTH SCIENCES	DURATION	TIMES	LOCATION*
Audiology and hearing science	60 minutes	11:00	Building 19, level 3
Healthcare science (cardiac physiology/ respiratory and sleep science)	30 minutes	11:00 12:30 14:00	Building 67
Midwifery	60 minutes	11:45	
Nursing		10:15 13:15	
Medicine	50 minutes	10:00 12:20	Building 32, level 1, lecture theatre
Occupational therapy	60 minutes	11:00	Building 45
Physiotherapy		11:00	
Podiatry		11:00	

SCIENCE AND MATHEMATICS	DURATION	TIMES	LOCATION*
Biochemistry	50 minutes	11:10 13:30	Building 32, level 1, lecture theatre
Biology			
Biomedical sciences			
Ecology			
Neuroscience			
Pharmacology			
Zoology			
Biomedical electronics: please see details under engineering and computing			
Chemistry	25 minutes	10:30 11:00 11:30 13:30 14:00 14:30	Check in at Building 30, reception area for lecture theatre 1 (27/2001) or lecture theatre 2 (27/2003)
Environmental science	45 minutes	10:15 11:30 13:30	Building 6 (Nuffield), lecture theatre A (1077)
Geology (includes Q&A session)	45 minutes	11:30 15:00	National Oceanography Centre Southampton, level 4, Charnock Theatre
Geophysical sciences (includes Q&A session)			
Marine biology (includes Q&A session)	45 minutes	10:00 13:30 16:00	National Oceanography Centre Southampton, level 4, Charnock Theatre
Oceanography (includes Q&A session)			
Mathematical sciences (This talk emphasises our MMath, single honours and MMath Mathematical Physics and related programmes)	45 minutes	11:00	Building 54, level 4, lecture theatre 4A (4011)
Mathematical sciences (This talk emphasises our business-oriented programmes: BSc Mathematics with Actuarial Science, MMORSE and BSc Mathematics with Finance)	45 minutes	13:00	Building 54, level 4, lecture theatre 4A (4011)
Natural sciences	30 minutes	11:00 13:30	Building 85, room 2209
Physics and astronomy (This talk focuses on admissions to the course)	50 minutes	11:00 14:00	Building 46, lecture theatre A
Physics and astronomy (This talk focuses on content of the course)	50 minutes	12:00 15:00	Building 46, lecture theatre A

SOCIAL & HUMAN SCIENCES AND EDUCATION	DURATION	TIMES	LOCATION*
Actuarial science: for mathematics with actuarial science please see mathematical sciences. For economics and actuarial science see economics			
Anthropology	60 minutes	11:00	Building 58 (Murray), lecture room C
Sociology and social policy	60 minutes		
Criminology	50 minutes	12:00 15:00	Building 58 (Murray), Murray lecture theatre
Economics	50 minutes	11:00 14:00	
Politics and international relations	50 minutes	11:00 13:00	Building 2a (Arts Annex), lecture theatre J Building 58 (Murray), Murray lecture theatre
Education/education and psychology	50 minutes	12:00	Building 34 (Education), lecture theatre
Geography	50 minutes	11:30 12:30 13:30	Building 44 (Shackleton), level 1, lecture theatre A
Population and geography	50 minutes	13:00	Building 44 (Shackleton), level 2, lecture room C
Psychology	40 minutes	11:40 14:00	Building 52 (Turner Sims)
Web science: social science pathway	30 minutes	12:30	Building 53 (Mountbatten), room 4025

*Venue on Highfield Campus unless otherwise stated

SUBJECT DROP-IN SESSIONS

Our drop-in sessions give you the chance to chat to academics, admissions staff and current students about the courses that interest you.

ARTS AND HUMANITIES	TIMES	LOCATION*
Ancient history	10:00–16:00	Avenue Campus, Building 65, room 1173
Archaeology	10:00–16:00	Avenue Campus, Building 65, room 1177
English	10:00–16:00	Avenue Campus, Building 65, room 1097
Film studies	10:00–16:00	Avenue Campus, Building 65, room 1095
History	10:00–16:00	Avenue Campus, Building 65, room 1173
Modern languages	10:00–16:00	Avenue Campus, Building 65, room 1163
Music	10:30–13:00 13:45–15:00	Building 2, room 2061
Philosophy	10:00–16:00	Avenue Campus, Building 65, room 1093

BUSINESS AND LAW	TIMES	LOCATION*
Accounting and finance	10:00–16:00	Building 2 (Business School), level 2, foyer
Business (including business management, business analytics, business entrepreneurship, business innovation, business philosophy and business history)		
Marketing (including international marketing)		
Law	10:00–16:00	Building 4, room 1029

ENGINEERING AND COMPUTING	TIMES	LOCATION*
Acoustical engineering	09:30–16:00	Building 13 (Tizard), level 3, room 3021
Aeronautics and astronautics	09:30–16:00	Building 13 (Tizard), level 3, room 3019
Civil engineering	09:30–16:00	Southampton Boldrewood Innovation Campus, Building 176, level 1
Engineering/maths/physics/geophysics foundation year	09:30–16:00	Building 7 (Lanchester), level 2, room 2003
Mechanical engineering	09:30–16:00	Building 13 (Tizard), level 3, room 3017
Ship science	09:30–16:00	Southampton Boldrewood Innovation Campus, Building 185, level 3
Aerospace electronic engineering	10:00–16:00	Building 53 (Mountbatten), entrance foyer
Biomedical electronics		
Electrical engineering		
Electrical and electronic engineering		
Electronic engineering		
Computer science and software engineering		
Information technology in organisations		
Mechatronic engineering		
Web science (computer science pathway)		

MEDICINE AND HEALTH SCIENCES	TIMES	LOCATION*
Audiology and hearing science	09:30–12:00	Building 13 (Tizard), level 4, room 4045
Healthcare science (cardiac physiology/respiratory and sleep science)	10:00–15:00	Building 67
Nursing		
Midwifery	10:00–11:45 12:45–15:00	Building 85, entrance foyer
Medicine	10:00–15:00	
Occupational therapy	10:00–14:00	Building 45
Podiatry	10:00–14:00	
Physiotherapy	10:00–14:00	

SCIENCE AND MATHEMATICS	TIMES	LOCATION*
Biochemistry	10:00–16:00	Building 85, room 2207
Biology		
Biomedical sciences		
Ecology		
Neuroscience		
Pharmacology		
Zoology		
Biomedical electronics: please see details under engineering and computing		
Chemistry	09:45–16:00	Check in at reception area, Building 30 for Chemistry information zone (29/2067)
Environmental science	09:30–16:00	Building 6 (Nuffield), foyer
Geology	09:30–17:00	National Oceanography Centre Southampton, level 4, area outside seminar room
Geophysical sciences		
Marine biology	10:00–16:00	Outside Building 46
Oceanography, geophysics and geology degree information for Open Day attendees who don't have time to visit the National Oceanography Centre Southampton		
Mathematical sciences (all programmes)	10:00–15:00	Building 56 (Mathematical Sciences Student Centre)
Natural sciences	10:00–15:30	Building 85, The Pod
Physics and astronomy	10:00–16:00	Building 46, entrance foyer
Science foundation year	14:30–15:30	Building 29, common room, room 2067

SOCIAL & HUMAN SCIENCES AND EDUCATION	TIMES	LOCATION*
Actuarial science: for mathematics with actuarial science please see mathematical sciences. For economics and actuarial science see economics		
Anthropology	10:00–15:00	Building 58 (Murray), level 1, foyer
Criminology		
Economics		
Politics and international relations		
Sociology and social policy		
Web science (social science pathway)		
Education / education and psychology	10:00–12:00 13:30–15:00	Building 34, room 2003
Geography	10:00–15:00	Building 44 (Shackleton), level 2, foyer
Population and geography		
Psychology	10:00–15:00	Building 52 (Turner Sims)

*Venue on Highfield Campus unless otherwise stated

ADDITIONAL SUBJECT EVENTS

Find out more about the subjects you're interested in by attending tours of facilities, taster sessions, demonstrations and talks. Please note that, due to high demand, some talks will be limited to prospective students only and entry will be on a first-come first-served basis.

ARTS AND HUMANITIES	TIMES	DETAILS	LOCATION*
Ancient history Archaeology English Film studies History Modern languages Philosophy	10:00–16:00	Tour of Avenue Campus (lasting 20 minutes)	Avenue Campus, Building 65, south corridor
		Study abroad opportunities	Avenue Campus, Building 65, north corridor
		Mission employable: career opportunities	Avenue Campus, Building 65, south corridor
Archaeology	10:00–16:00	Demonstration	Avenue Campus, Building 65, lawn
Modern languages	10:15–15:30	Tour of multimedia language facilities (lasting 30 minutes)	Avenue Campus, Building 65, upper second level
Music	13:00	Music performance (lasting 40 minutes)	Building 52 (Turner Sims)
	10:15–15:45	Tour of facilities (lasting 25 minutes)	Building 2, Music department

ENGINEERING AND COMPUTING	TIMES	DETAILS	LOCATION*
Acoustical engineering Aeronautics and astronautics Civil engineering Engineering foundation year Mechanical engineering Ship science	09:30–16:00	Visit engineering facilities at Highfield Campus	Details available from Building 7 (Lanchester) at Highfield Campus
		Visit engineering facilities at Boldrewood Innovation Campus	Details available from check-in point, Boldrewood Innovation Campus
		Industrial placement year information point	Building 7 (Lanchester), room 2003
		Showcase of student engineering projects	Boldrewood Innovation Campus, Building 177, level 3
Acoustical engineering Aeronautics and astronautics Civil engineering Engineering foundation year Mechanical engineering Ship science	11:30 12:30 13:30	Women in engineering talk (lasting 45 minutes)	Building 7 (Lanchester), level 3
Aerospace electronic engineering Biomedical electronics Computer science and software engineering Electrical and electronic engineering Electrical engineering Electronic engineering Information technology in organisations Mechatronic engineering Web science (computer science pathway)	12:00–13:30	Ask an admissions tutor (drop in)	Building 53 (Mountbatten), room 1257
	12:30	Taster lecture (lasting 25 minutes)	Building 2A (Arts Annex), lecture theatre J
	12:00 13:00	Careers and employability talk (lasting 25 minutes)	Building 53 (Mountbatten), 4025
Aerospace electronic engineering Biomedical electronics Electrical engineering Electrical and electronic engineering Electronic engineering Mechatronic engineering	11:30 12:30 13:30 15:30	Nanotech cleanroom tour (lasting 25 minutes)	Building 53 (Mountbatten), entrance foyer
		Control and robotics lab tour (lasting 25 minutes)	Building 16, level 2, room 2025
		High-voltage lab tour	Building 20 (high-voltage lab), entrance to foyer
		Biomedical electronics information and lab tour (lasting 25 minutes)	Building 85, entrance foyer
	10:00 11:00 11:30 12:00 13:00 13:30 14:30 15:00 15:30	Teaching lab tour for electronic/electrical degrees (lasting 25 minutes)	Building 53 (Mountbatten), entrance foyer
	10:00–12:30 13:00–16:00	Drop in to talk to current students and see project demos	Building 53 (Mountbatten), electronic and electrical teaching labs
Computer science and software engineering Information technology in organisations Web science (computer science pathway)	10:00 11:00 11:30 12:00 13:00 13:30 14:30 15:00 15:30	Teaching lab tour for computing degrees (lasting 25 minutes)	Building 53 (Mountbatten), entrance foyer
	10:00–12:30 13:00–16:00	Drop in to talk to current students and see project demos	Building 53 (Mountbatten), computing labs

MEDICINE AND HEALTH SCIENCES	TIMES	DETAILS	LOCATION*
Audiology and hearing science	12:15	Tour of facilities	Departs from Building 13 (Tizard), level 2, foyer
Midwifery	10:00–11:45 12:45–15:00	Clinical skills lab	Building 67 (Nightingale)
Nursing	10:00–15:00		
Nursing, midwifery and allied health professions placement zone	11:00–14:00	Drop in and find out more about clinical practice placements	Building 67 (Nightingale)
Occupational therapy	13:00	Workshop	Building 45

SCIENCE AND MATHEMATICS	TIMES	DETAILS	LOCATION*
Biochemistry Biology Biomedical sciences Ecology Neuroscience Pharmacology Zoology	10:00–11:10 12:00–13:30 14:20–15:30	Centre for Biological Sciences lab demonstrations	Building 85, room 1015, teaching labs
Biomedical electronics: please see details under engineering and computing			
Chemistry	10:00–12:00 13:30–15:30	Department tour (lasting 30 minutes)	Leaves from Chemistry main entrance foyer (Building 30) every 10 minutes
Environmental sciences	12:45	Student talk (lasting 30 minutes)	Building 6 (Nuffield), lecture theatre A
Geology Geophysical sciences Marine biology Oceanography	09:30–16:00	Tour and demonstrations (lasting 60 minutes)	National Oceanography Centre Southampton, level 4, reception
Geology Geophysical sciences Oceanography	10:00–16:00	Information stand on degree programmes and field trips	Outside Building 46
Marine biology	10:00–16:00	Information stand on degree programmes and field trips	Building 85
Mathematical sciences	12:00 14:00	Taster lecture (lasting 30 minutes)	Building 54, lecture room 7B
Natural sciences	11:00–14:00	15-minute tours – leave on the hour	Building 85, The Pod
Physics and astronomy	10:00–16:00	Tour of the facilities and labs (lasting 30 minutes)	Building 46, reception desk, foyer
	10:00–15:00	Try out a lab experiment (book your place at reception)	Building 46, level 3, labs
	10:00–16:00	Exhibition stands	Building 46, foyer
	10:00–16:00	Careers and destinations exhibit	Building 46, corridor behind lecture theatres B/C (off entrance foyer)
	10:00–15:00	Planetarium astronomy show	Building 46, level 5, room 5081
	13:00	Taster lecture (lasting 45 minutes)	Building 46, level 3, lecture theatre A

SOCIAL & HUMAN SCIENCES AND EDUCATION	TIMES	DETAILS	LOCATION*
Geography	10:00–15:00	Lab drop in	Building 44 (Shackleton), level 1, labs
	10:00–15:00	Human geography fieldwork display	Building 44 (Shackleton), level 1, room 1087
Population and geography	10:00–13:00	Field trip video (lasting five minutes)	Building 44 (Shackleton), level 2, lecture room C

*Venue on Highfield Campus unless otherwise stated

TRAVEL DETAILS

We run the award-winning unilink bus service that connects our Southampton campuses with all the major transport links in the city.

Show your Open Day ticket or the Open Day app for free travel on our shuttle buses and unilink services to visit Highfield Campus, Avenue Campus, Southampton Boldrewood Innovation Campus and the National Oceanography Centre Southampton.

Look out for our student ambassadors wearing green T-shirts who will be happy to provide you with directions onto the correct bus.

Please allow plenty of time for transfers between University campuses, halls of residence and from West Quay/local public transport terminals.



WEST QUAY TO:

- Avenue Campus
20 minutes
- Highfield Campus
35 minutes
- National Oceanography Centre Southampton
15 minutes

SOUTHAMPTON CENTRAL TRAIN STATION TO:

- Avenue Campus
15 minutes
- Highfield Campus
25 minutes
- National Oceanography Centre Southampton
20 minutes

HIGHFIELD CAMPUS TO:

- Avenue Campus
15 minutes
- Southampton Boldrewood Innovation Campus
10 minutes
- National Oceanography Centre Southampton
40 to 50 minutes

AIRPORT PARKWAY TRAIN STATION/ SOUTHAMPTON AIRPORT TO:

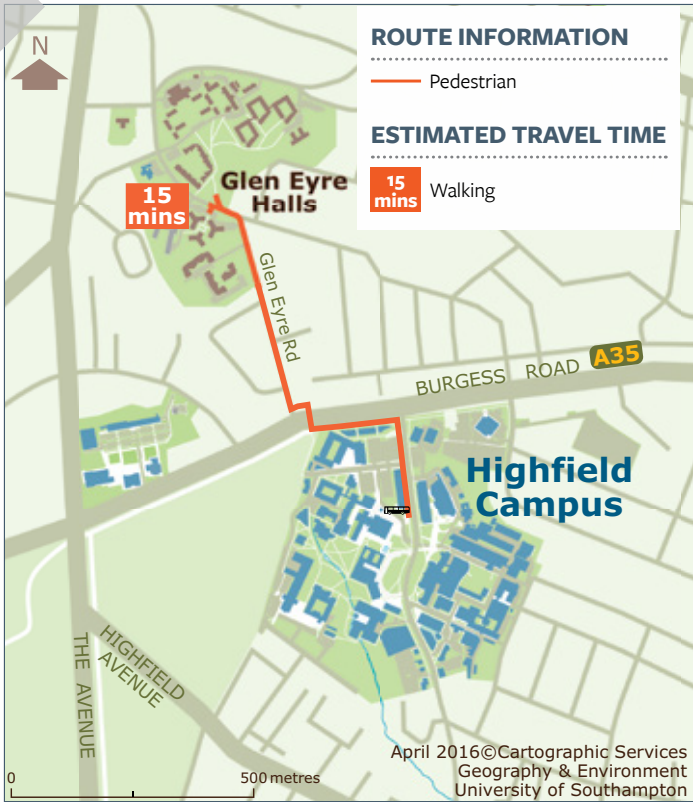
- Highfield Campus
20 minutes

ACCOMMODATION

Come and visit some of our halls of residence during the Open Day. Glen Eyre and Mayflower Halls are open for you to look round. You will be able to get a feel for the range of rooms that we offer on our different sites.

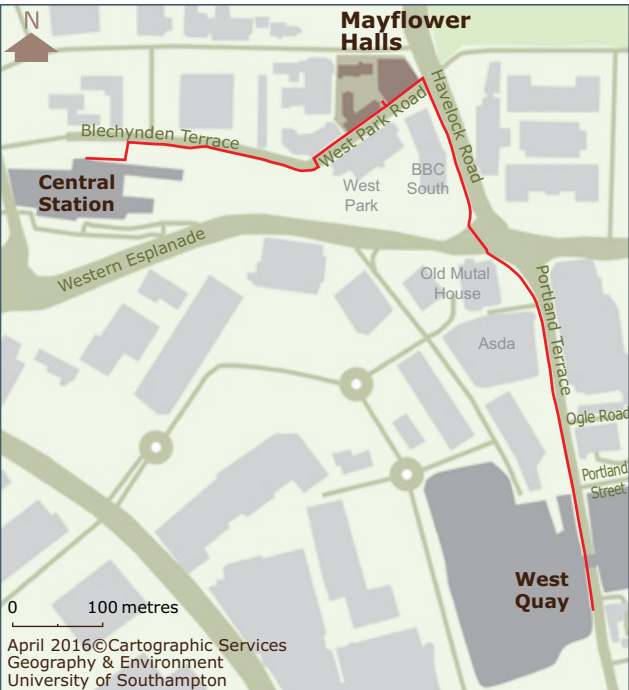
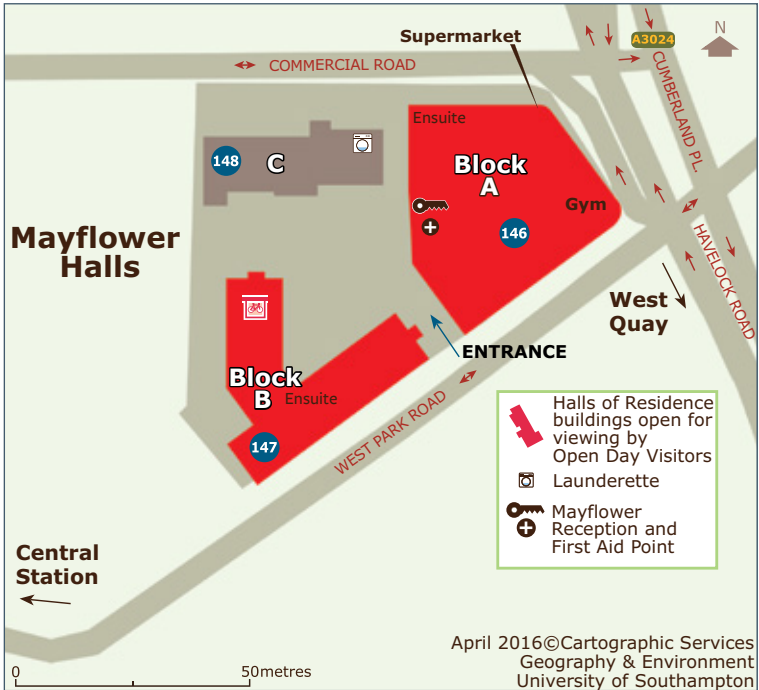
As well as quality, a distinctive feature of the halls experience at Southampton is diversity. We have something for everyone in terms of room types and locations. As well as the sites open on show today, we also have many other halls of residence available for you to apply to live in. To find out more, please visit our Residences staff at the information stand in Building 40.

GLEN EYRE HALLS



MAYFLOWER HALLS

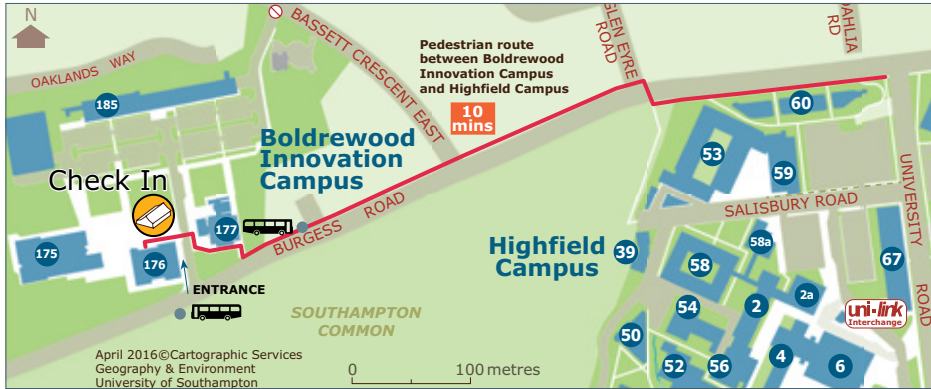
To view Mayflower Halls, take the shuttle bus to Southampton Central train station and follow the AA Walking Route signs.



CAMPUS MAPS

SOUTHAMPTON BOLDREWOOD INNOVATION CAMPUS ROUTE TO HIGHFIELD CAMPUS

A short walk from the Highfield Campus, our new £122m Southampton Boldrewood Innovation Campus houses our centre for innovation, business and education in maritime engineering and engineering sciences.



AVENUE CAMPUS MAPS

Our humanities campus houses a state-of-the-art purpose-built £3m Archaeology Building and is located on the edge of Southampton Common, a short walk from Highfield.

If you are arriving at Avenue by bus, you will be dropped off and picked up on The Avenue (A33). Look out for student ambassadors in green T-shirts, who will direct you between the bus stop and the campus.

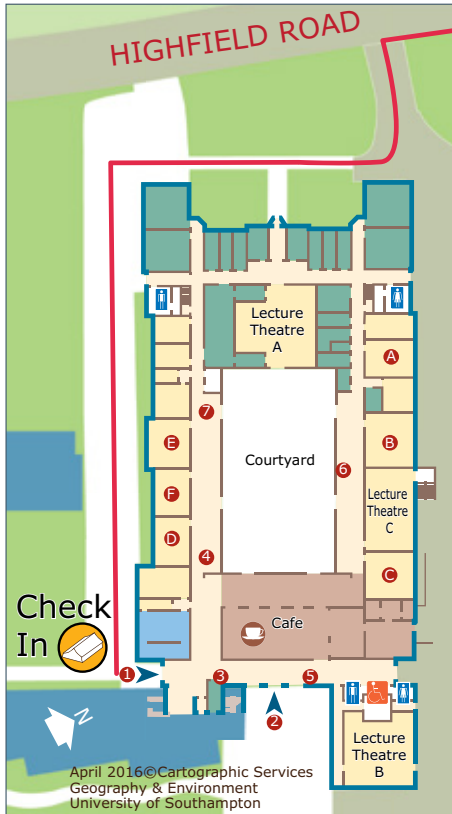
KEY

- 1 & 2 Main entrances
- 3 Information desk
- 4 Avenue Campus Tours meeting point
- 5 Tours of Highfield Halls of Residence meeting point
- 6 Study Abroad opportunities
- 7 Mission Employable: Career Opportunities

Tour of Centre for Language Study can be found on the upper second level

- Teaching areas
- Administration
- A Modern languages drop in (room 1163)
- B Ancient history & History drop in (room 1173)
- C Archaeology drop in (room 1177)
- D Philosophy drop in (room 1093)
- E English drop in (room 1097)
- F Film studies drop in (room 1095)

Please note: Music is based on the Highfield Campus, a short walk from Avenue Campus. Music tours will depart from Building 2, Music department foyer (Highfield Campus).



NATIONAL OCEANOGRAPHY CENTRE SOUTHAMPTON

Our waterfront campus is one of the world's leading research centres for the study of ocean and earth sciences.

NOCS can be accessed by bus from West Quay and Southampton Central train station, as well as from Highfield Campus. Student ambassadors in green T-shirts will be available to direct you to the bus.

HIGHFIELD CAMPUS

Our main campus caters for most of our academic courses. Incorporating state-of-the-art research and teaching facilities, it boasts new and refurbished student facilities such as the Union and the Jubilee Sports Centre.

CATERING FACILITIES

A wide variety of restaurants and cafés will be open around the University offering a range of refreshments, from drinks and snacks to full meals.

Building 12

Library café 09:00 – 15:00

Building 38

Arlott Starbucks 08:30 – 17:00
BBQ 11:00 – 15:00 (front lawn, weather dependant)
Café 38 09:00 – 15:00
Lattes Café Bar 09:00 – 16:00
Terrace Restaurant 09:00 – 14:30; breakfast available (AM) hot meals, salads and sandwiches

Building 40

The Stag's 11:30 – 23:30; our campus pub

Building 42

Piazza Restaurant 09:00 – 15:00; breakfast available, variety of hot meals, sandwiches and cold drinks
Piazza Starbucks 08:30 – 16:00
The Bridge 09:00 – 15:30 (food service 11:30 – 15:30)
The Café 08:30 – 15:30
Bar Three Diner 11:30 – 15:30; American diner style hot food and cold drinks

Building 52

Turner Sims Coffee Bar 10:30 – 15:00

Building 57

The Shop 08:30 – 16:30; hot and cold food and drink

Building 85

Café 85 09:00 – 15:00

Transport Interchange

Kiosk 08:00 – 16:00; hot and cold drinks, sandwiches and snacks

BUILDING NUMBER/EVENT

- 12 Hartley Library and Library Café
- 18 Jubilee Sports Centre
- 37 Student Services Centre and Information Stands
- 38 Catering Outlet
- 40 Welcome Desk and Information Stands
- 41 Chaplaincy
- 42 Union Southampton
- 57 The Union Shop

CAMPUS INFORMATION

- Building numbers
- Information Fair
- Footpaths
- Information & Registration Points
- Catering Outlet
- Marquee
- First Aid

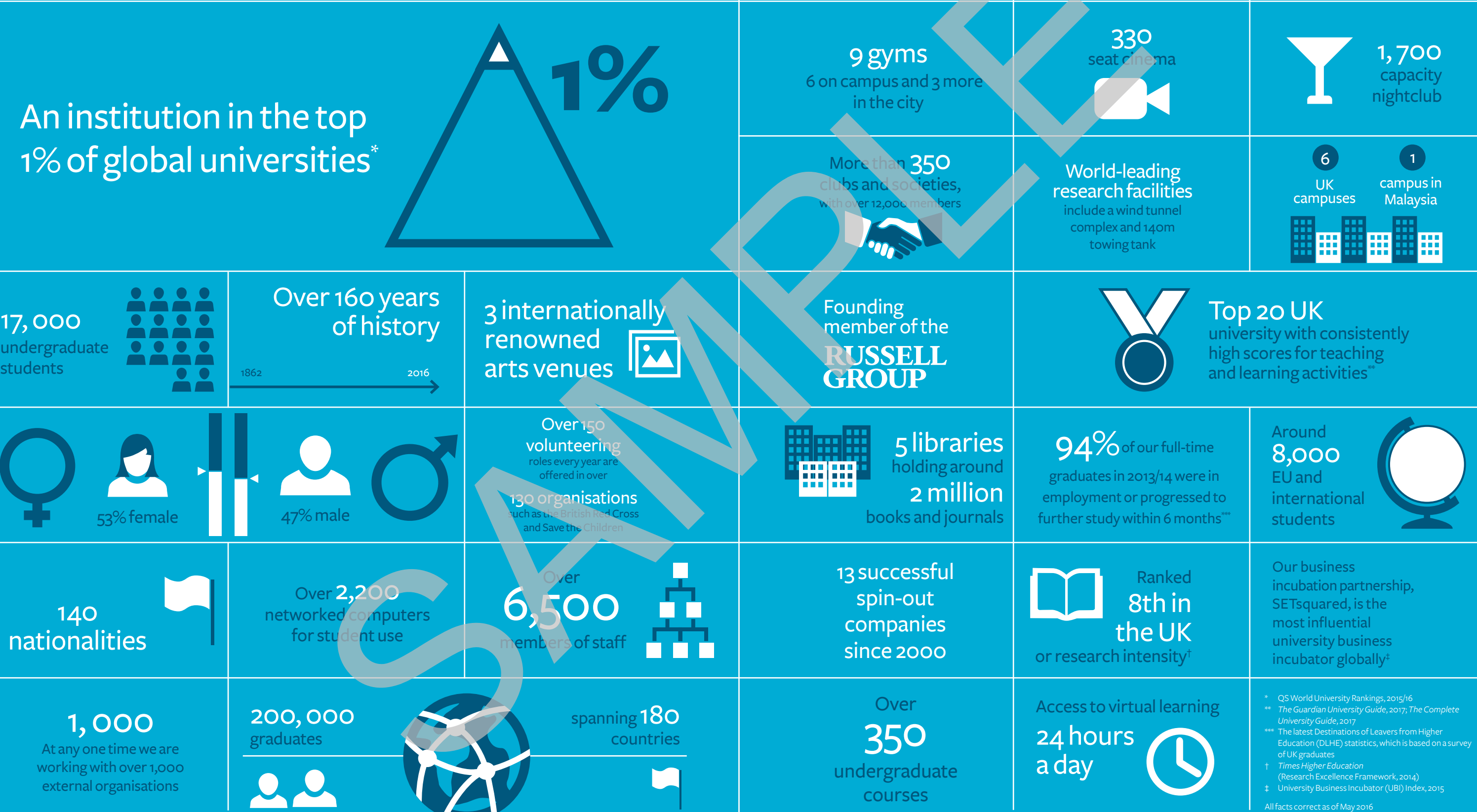
DISABLED ROUTES AND ACCESS

- Parking for disabled persons
- Toilets for disabled persons (with wheelchair access)
- Accessible payphone
- Wheelchair route (unaided)
- Wheelchair route (with assistance)



FACTS AND FIGURES

Here is a brief overview of the University of Southampton in numbers.



www.southampton.ac.uk/visit
UK and EU enquiries:
visit@southampton.ac.uk
+44 (0)23 8059 9699

International enquiries:
international@southampton.ac.uk
+44 (0)23 8059 9699



#UoSOpenDay

DISCLAIMER

This document is for information purposes only and is prepared well in advance of publication. While the University of Southampton uses all reasonable efforts to ensure that all statements, information and data contained in this document are accurate as at the date of publication, it reserves the right to make revisions or modifications to such statements, information or data at any time and accepts no responsibility for the consequences of any such revisions or modifications.

© University of Southampton 2016

This document can be made available, on request, in alternative formats such as electronic, large print, Braille or audio tape, and in some cases, other languages.



When finished with this document please recycle it.