

UNIVERSITY OF
Southampton

EXPLORE YOUR NEW WORLD

OPEN DAY PROGRAMME
SEPTEMBER 2018

STUDENT
AMBASSADOR
Happy to help

CONTENTS

- 04 Plan your day
- 05 Explore and enjoy
- 06 Campus developments
- 07 Open Day shuttle buses
- 08 Information Fair
- 10 General events
- 12 Subject events
- 22 Explore the city
- 23 Students' Union
- 24 Accommodation
- 26 Highfield Campus map
- 28 Campus maps
- 30 Catering facilities
- 31 Your planner



Top 20

in the UK*



Top 100

globally**



Silver award

for teaching excellence***



Download the app

Search 'MySouthampton'
in your app store



Follow us on social media

Search #UoSOpenDay

* Complete University Guide, 2019
** QS World University Rankings, 2019
*** Teaching Excellence and Student Outcomes Framework (TEF) rating, 2019



I am delighted to welcome you to the University of Southampton Open Day.

Your university experience is about more than your course, it's about the next chapter of your life. At Southampton, you can grow academically and personally, meet like-minded people and work towards achieving your dreams. Our job is to help you do this.

We are an institution ranked among the top 100 global universities** and a founding member of the prestigious Russell Group of research-intensive UK universities. But we offer more than a taught education – we will support you in your studies, help you achieve a good work/life balance and prepare you for life after university.

Our Open Days aim to give you a glimpse of what your life at Southampton could be like. Our world-leading academics will inspire you with their enthusiasm and our students will show you round the beautiful green campuses where you can sample some of the student societies and sports clubs on offer.

I hope you choose Southampton as your home away from home. Choose a university that shares your passion for learning and discovery; a place you can grow and develop the skills you need to achieve your goals.

Professor Sir Christopher Snowden
President and Vice-Chancellor

Southampton has one of the biggest Students' Unions in the country, with over 340 societies and sports clubs. Our students run our award-winning media channels (covering radio, TV and magazines) and we are one of the only unions in the country to have our own cinema, showing all the latest films.

The Students' Union is here to represent you at every level – from the course reps who represent you within your faculties, to people like me and the other sabbatical officers who are elected to represent you full time.

We also run a dedicated Advice Centre, which gives you independent, impartial advice when you need it.

Make sure you pop in and see us today – you'll spot us walking around campus, so say hello and ask us about student life and what the Union can offer you as a student!

Emily Dawes
Union President

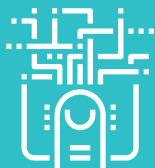


PLAN YOUR DAY

At our Open Days, we aim to give you a glimpse of what your life at Southampton could be like. The Open Day is the first step on your university journey; use our top tips to help you get the most from your day.

Download the app

Create your schedule for the day using our free Open Day app. Search 'MySouthampton' in your app store.



Check in

When you have a chance, head to one of our check-in points and get your ticket scanned. This lets us know you've attended the Open Day. There are check-in points on Highfield Campus, Boldrewood Innovation Campus, Avenue Campus and at the National Oceanography Centre Southampton.

See the city

Make the most of your day by visiting Southampton city centre on one of our regular shuttle buses. You can take a tour of the city, enjoy something to eat and drink or even see a show at the Mayflower Theatre. Or, if you don't have time to visit, view our 360 degree virtual city experience room in the Information Fair.

Take a break

There are many places to grab something to eat or drink on each of our campuses, with special deals for our Open Day visitors.



Follow us on social media

Search #UoSOpenDay to stay up-to-date with what's happening on the day.

Visit our Information Fair

Between 09:00 and 16:00 you can speak to representatives from subject areas, clubs and societies, and the services that will support you as a Southampton student. To find out more, see page 8.



Attend a subject talk

Subject talks run throughout the day. They provide information about what it's like to study here at Southampton and what modules you can take. You will also have the opportunity to ask questions about your chosen area of study (see pages 12–20 for talk times).



Take a tour

A guided campus tour is the best way to see the facilities on Highfield Campus. Tours are led by our student ambassadors, who will give real insight into life at Southampton (see page 11).



Please note that filming and photography will be taking place at the Open Days for use in University publications and on the University website. If you do not wish to be included, please let the film crew or photographer know.

EXPLORE AND ENJOY

Enjoy a lunchtime concert performed by our talented music students.

The Open Day is your chance to get a real feel for the University and imagine yourself living and learning here. So explore the campuses, enjoy the many green spaces and social areas; soak up the atmosphere. And here are a few highlights to look out for while you're here.



Lunchtime concerts

Join us at lunchtime for a concert by our Southampton Showcase performers. Showcase is a platform providing exposure to the talented pre-professional student performers within our Music department. Our lunchtime concert will feature an eclectic mix of performances for you to enjoy. Stay for the whole concert or just drop in for a while – and don't forget to bring your lunch! For concert times see page 11.

Cafés and restaurants

Take a break and enjoy a coffee or lunch at one of our many restaurants and cafés located across our campuses.

Sports talks

If sport is your thing, head over to building 34 for one of our talks about the excellent sporting facilities available here at Southampton. We cater for all levels – so whether you're a sporting professional or just enjoy an occasional keep fit class, there will be something for you.

360 degree experience of the city

Don't have time to head to the city on the Open Day? Experience the city of Southampton by visiting our 360 degree virtual experience room, located within the City Life Zone of the Information Fair.

Filmed across 12 locations, with a sound track created by our music students, this will give you a feel for what our vibrant city has to offer.

Virtual Open Day

Remember, if you don't have chance to see everything during the Open Day, you can explore all our campuses at your leisure with our Virtual Open Day.

www.southampton.ac.uk/virtualopenday



Artist's Impression

01



Artist's impression

02

03



04

CAMPUS DEVELOPMENTS

The University is committed to investing in high-quality facilities for our students.

Construction of our new teaching and learning building on Highfield Campus, due to open in 2019, is well underway. The new building will feature a 250-seat lecture theatre, a range of adaptable group teaching spaces, a computer suite, a café and a variety of study areas.

Also opening in 2019 is our National Infrastructure Laboratory on our Boldrewood Innovation Campus. This purpose-built facility will house state-of-the-art research laboratories to develop our understanding of transport infrastructure. It is supported by £36m of government investment as part of a national partnership.

This spring saw staff move into our new Centre for Cancer Immunology at University Hospital Southampton. Fully funded by philanthropy, this specialist facility is the first dedicated centre of its kind in the UK.

Our latest residential building, Chamberlain Hall, opened in 2016 at our Glen Eyre complex. This hall of residence represents a £36m investment by the University and offers 365 en suite bedrooms with shared kitchens, common rooms and a range of study spaces.

- 01 National Infrastructure Laboratory
- 02 Centre for Teaching and Learning
- 03 Chamberlain Hall
- 04 Centre for Cancer Immunology



Find out more:
www.southampton.ac.uk/building-projects

OPEN DAY SHUTTLE BUSES

During the Open Day you can enjoy unlimited travel between our Southampton campuses on our free shuttle bus service.

Show your Open Day ticket, programme, or the app for free travel on our shuttle buses and unilink services.

You can get on one of our buses at Westquay and, depending on the course you're interested in, go straight to Highfield Campus, Avenue Campus, Boldrewood Innovation Campus or the National Oceanography Centre Southampton (NOCS). From Parkway and Wide Lane, buses will go to Highfield Campus, where you will then need to change if you are heading on to one of our other campuses. If you are going to NOCS from Wide Lane, continue travelling on the U1.

If the talks and events you're interested in attending are at one of our other

campuses, there's no need to go to Highfield Campus first; you can build your day around your interests and visit the campuses in the most convenient order for you.

Our award-winning unilink bus service connects our Southampton campuses with the city's major transport links. Our student ambassadors will be happy to provide you with directions onto the correct bus.

Please allow plenty of time for transfers between the campuses, halls of residence and from Westquay, and local public transport terminals.

Keep checking our website for the latest travel information.

APPROXIMATE TRANSFER TIMES

WESTQUAY TO:

Avenue Campus	20 minutes
Boldrewood Innovation Campus	25 minutes
Highfield Campus	35 minutes
National Oceanography Centre	15 minutes

SOUTHAMPTON CENTRAL TRAIN STATION TO:

Avenue Campus	15 minutes
Boldrewood Innovation Campus	20 minutes
Highfield Campus	25 minutes
National Oceanography Centre	20 minutes

HIGHFIELD CAMPUS TO:

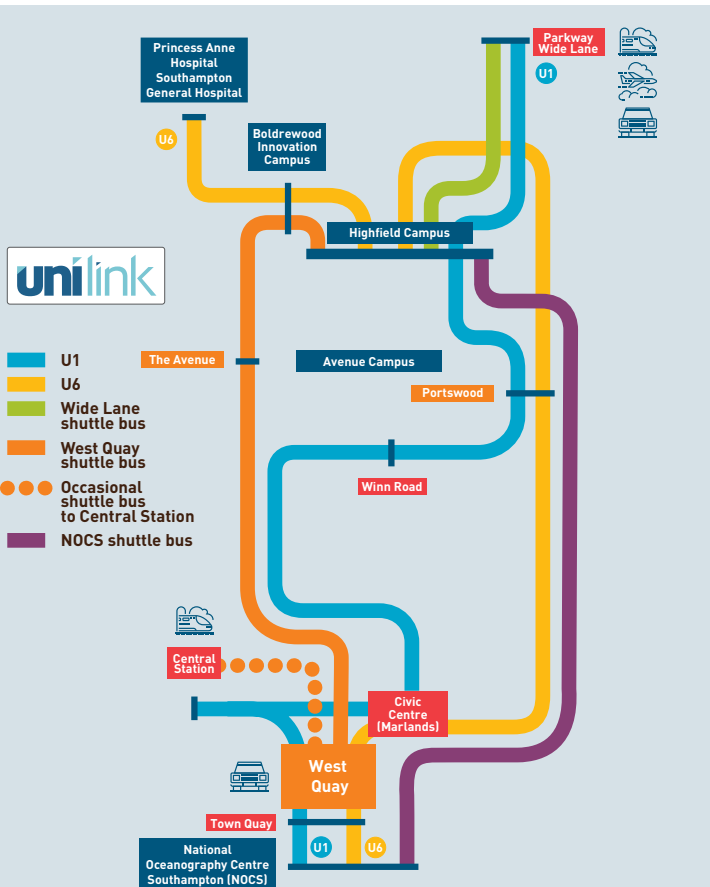
Avenue Campus	10 minutes
Boldrewood Innovation Campus	5 minutes
National Oceanography Centre	45 minutes

AIRPORT/PARKWAY TRAIN STATION TO:

Avenue Campus	40 minutes <i>(One change at Highfield Campus)</i>
Boldrewood Innovation Campus	35 minutes <i>(One change at Highfield Campus)</i>
Highfield Campus	20 minutes
National Oceanography Centre	1 hour 10 minutes <i>(One change at Highfield Campus)</i>

WIDE LANE TO:

Avenue Campus	40 minutes <i>(One change at Highfield Campus)</i>
Boldrewood Innovation Campus	35 minutes <i>(One change at Highfield Campus)</i>
Highfield Campus	20 minutes
National Oceanography Centre	1 hour 10 minutes <i>(One change at Highfield Campus)</i>



INFORMATION FAIR



The Information Fair is at the heart of your Open Day. Here you will find representatives from subject areas, support services, the city and some of our clubs and societies. Make sure you allow time to head over, check in and get all of your questions answered.

The Information Fair takes place in Building 18 (Jubilee Sports Centre) on the Highfield Campus, and will be open between 09:00 and 16:00.

SUBJECT ZONE

Within this zone you will be able to find out about your subject of interest. You will get the chance to speak to current students or members of staff.

STUDENT SUPPORT ZONE

Here you can speak to representatives from the services that will support you from application to graduation. Get help with your application, receive

funding advice and find out where your Southampton degree could take you.

If you have any specific requirements and think you might need support during your studies, visit the Enabling Services stand where the team will be happy to answer any questions you have.

CLUBS AND SOCIETIES ZONE

This zone allows you the opportunity to get a feel for what student clubs and societies are available to you when you study here at the University of Southampton. Whether it is competing in a sport you love,

broadening your experience with volunteer work or getting involved in a society, no matter what you're interested in there's something for you.

CITY LIFE AND ACCOMMODATION ZONE

Speak to our Accommodation team to find out where you could be living as a Southampton student. You can also find out more about what the city of Southampton has to offer with our 360 degree virtual experience room.



STAND NUMBER

- | | | |
|--|---|---|
| <p>1 Biology, Ecology and Zoology</p> <p>2 Biochemistry, Biomedical Sciences, Pharmacology, Neuroscience</p> <p>3 Geology and Geophysics</p> <p>4 Oceanography and Marine Biology</p> <p>5 Natural Sciences</p> <p>6 Chemistry</p> <p>7 Environmental Science</p> <p>8 Engineering/Physics/Maths/Geophysics Foundation Year</p> <p>9 Engineering including Acoustical Engineering, Aeronautics and Astronautics, Civil Engineering, Mechanical Engineering and Ship Science</p> <p>10 Computer Science</p> <p>11 Electronic and Electrical Engineering</p> <p>12 Physics and Astronomy</p> | <p>13 Health Sciences, Allied Health Professions including Physiotherapy, Podiatry, Occupational Therapy, and Nursing and Midwifery</p> <p>14 Mathematical Sciences</p> <p>15 Geography, Population and Geography</p> <p>16 Economics</p> <p>17 Politics and International Relations, Quantitative Social Science</p> <p>18 Anthropology, Sociology, Social Policy and Criminology</p> <p>19 Psychology</p> <p>20 Education</p> <p>21 Audiology</p> <p>22 Ancient History, Archaeology, History, Philosophy</p> <p>23 English, Film, Modern Languages and Linguistics, Music</p> <p>24 Winchester School of Art</p> | <p>25 Business School</p> <p>26 Law School</p> <p>27 Medicine</p> <p>28 Admissions</p> <p>29 Careers and employability</p> <p>30 Studying abroad</p> <p>31 Year in Industry</p> <p>32 Southampton Language Opportunity</p> <p>33 University IT Services</p> <p>34 Hampshire Constabulary</p> <p>35 Student Services Centre</p> <p>36 Student Life</p> <p>37 Enabling Services</p> <p>38 Library</p> <p>39 Arts at University of Southampton</p> <p>40 Committed to sustainability</p> <p>41 Faith and Reflection Centre</p> <p>42 Accommodation</p> <p>43 City experience (360 degree virtual experience room)</p> |
|--|---|---|

GENERAL EVENTS



TALKS	TIMES	DURATION	LOCATION*
Welcome to the University of Southampton: Your chance to hear from our President and Vice President about what makes Southampton a special place to live and study	09:30	30 minutes	Building 52 (Turner Sims)
	10:45 13:00	30 minutes	Building 42 (the Students' Union), Level 3, cinema
Accommodation	12:15 13:45 15:15	30 minutes	Building 42 (the Students' Union), Level 3, cinema
	10:30 11:30 12:45 14:15	30 minutes	Glen Eyre Halls of Residence, Glen Eyre Road, Dining Hall
Extended Project Qualification talk: Preparation for university study	11:00 14:00	45 minutes	Building 34, Lecture Theatre 3001
Fees and finance	10:00 12:00 13:00 14:00	45 minutes	Building 40, Garden Court
Sport at Southampton	09:30 13:15	30 minutes	Building 34, Lecture Theatre 3001
Studying abroad information session	10:00 13:30 15:15	45 minutes	Building 6 (Nuffield), Lecture Theatre A
Student life with the Students' Union: The Union's elected student officers will welcome you to campus with an essential guide to student life. Expect to hear an overview of everything the Union offers, with information about halls, support services, nightlife and much more	10:00 11:30 14:30	30 minutes	Building 42 (the Students' Union), Level 3, cinema
Personal statement: top tips	09:15 10:00 11:00 12:00 13:00 14:00 15:00	30 minutes	Building 35, Lecture Theatre 1001
Enterprise, internships, placements and volunteering: how the Careers Service can support your employability	10:00 11:00 13:00	30 minutes	Building 6, Room 1083

*Location is on Highfield Campus unless otherwise specified

DROP IN	TIMES	LOCATION*
Faith and Reflection Centre: Find out what support and activities we offer throughout the academic year. Come and enjoy our hospitality or just take a break in a quiet space	10:00–16:00	Faith and Reflection Centre, House 41
Southampton Showcase: our concert is open to all. Please feel free to bring lunch and to arrive or leave between acts	12:30–13:10	Building 52 (Turner Sims)
The Students' Union: drop in for a chance to discover the opportunities the Students' Union has to offer, including information about sports clubs, societies, advice, socialising and representation. This is your chance to ask current students and elected officers anything you are unsure about, while discovering the facilities with a Union tour	09:00–16:00	Building 42 (the Students' Union)

TOUR	DESCRIPTION	TIMES	LOCATION*
Highfield Campus	Led by a current student, see the sights and amenities of our main campus, and get an insight into what your life would be like as a student at Southampton. These tours take around 30 minutes and are on foot	10:00–16:00	Marquee on the grass outside Building 38
Hartley Library	Our libraries will be an important part of your time here as a student. Explore our main University Library and see our study spaces and print resources. An opportunity to talk to Library staff and ask questions about resources and services, and how the Library can support you in your studies. Take a self-guided walk around all five floors and see inside this amazing building	09:00–16:00	Building 12 (the Hartley Library)
Jubilee Sports Centre	Take a look around our onsite sports centre which houses a 25-metre swimming pool and a 170 station fitness suite. These tours are self-guided; follow the footsteps outside the Information Fair	09:00–16:00	Building 18 (Jubilee Sports Centre)
Students' Union	Led by the Students' Union team, discover how the University of Southampton Students' Union can enrich your student experience. Check out the cinema, sports facilities, media studios, sports bar, lettings agency and more	09:00–16:00	Building 42 (the Students' Union)
Glen Eyre Halls	Take a self-guided stroll around our largest accommodation site, and see examples of self-catered non-en suite and en suite rooms you might like to live in as a student. Staff and student helpers will be available onsite if you would like to find out more about the student accommodation experience. Follow the yellow signage from the top of University Road. Please note that the walk to Glen Eyre takes around 15 minutes	10:00–16:30	Glen Eyre Halls of Residence, Glen Eyre Road
Mayflower Halls	Take a self-guided tour around our larger inner city halls site, located in the heart of Southampton's Cultural Quarter. View examples of modern self-catered en suite accommodation that could be your new home as a student. Staff and student helpers will be available onsite so you can find out more about the student accommodation experience. Catch a free bus from the interchange at Highfield Campus to Southampton Central train station, and follow the yellow signage to Mayflower Halls. Please allow around 30 minutes' travel time	12:00–17:00	Mayflower Halls of Residence, West Park Road

SUBJECT EVENTS

DETAILS	TIME	DURATION	LOCATION*
ACCOUNTING AND FINANCE			
Subject talk	10:30 12:30 14:30	40 minutes	Building 2, Level 3, Lecture Theatre 3043
Explore how the Bloomberg Terminal brings together real-time industry market data, breaking news and powerful analytics	09:30–16:30	30 minutes	Building 58 (Murray), Level 1, Room 1053, Bloomberg Trading Suite
ACOUSTICAL ENGINEERING			
Subject talk	11:00 13:15	45 minutes	Building 19, Level 3, Room 3011
Talk: Which engineering subject should I study? Find out about our engineering subjects and choose the right one for you	10:00 11:00 12:00 13:00	30 minutes	Building 5 (Eustice), Level 2
Drop in and guided tour of facilities	10:00–16:00	45 minute tour (approx)	Building 19, Level 3, Room 3011
The design show: a showcase of our engineering students' project work	10:00–16:00		Boldrewood Innovation Campus, Building 177, Level 3
<i>Actuarial Science: For Mathematics with Actuarial Science see Mathematics. For Economics and Actuarial Science see Economics</i>			
AERONAUTICS AND ASTRONAUTICS			
Subject talk	10:45 12:45 14:45	45 minutes	Building 7 (Lanchester), Level 3, Lecture Theatre A
Talk: Which engineering subject should I study? Find out about our engineering subjects and choose the right one for you	10:00 11:00 12:00 13:00	30 minutes	Building 5 (Eustice), Level 2
Drop in	10:00–16:00		Boldrewood Innovation Campus, Building 176, Level 2, Room 2013
The design show: a showcase of our engineering students' project work	10:00–16:00		Boldrewood Innovation Campus, Building 177, Level 3
Visit engineering facilities at Highfield Campus	10:00–16:00		Details (including map) available from Building 18 Information Fair, Building 7, and Boldrewood Innovation Campus Information Point
Visit engineering facilities at Boldrewood Innovation Campus	10:00–16:00		Details (including map) available from Building 18 Information Fair, Building 7, and Boldrewood Innovation Campus Information Point
<i>Aerospace Electronic Engineering: See Electrical and Electronic Engineering</i>			

*Location is on Highfield Campus unless otherwise specified

DETAILS	TIME	DURATION	LOCATION*
ANCIENT HISTORY			
Subject talk	13:15	45 minutes	Avenue Campus, Building 65, Lecture Theatre C
Tour of Avenue Campus	10:00–15:45 (departing every 15 minutes)	20 minutes	Avenue Campus, Building 65, South Corridor
Drop in	10:00–16:00		Avenue Campus, Building 65, Room 1173
Study abroad opportunities	10:00–16:00		Avenue Campus, Building 65, North Corridor
ANTHROPOLOGY			
Subject talk	10:00	50 minutes	Building 58 (Murray), Murray Lecture Theatre
ARCHAEOLOGY			
Subject talk and tour	11:15 14:15	75 minutes (45 minute talk, 30 minute tour)	Avenue Campus, Building 65, Lecture Theatre C
Tour of Avenue Campus	10:00–15:45 (departing every 15 minutes)	20 minutes	Avenue Campus, Building 65, South Corridor
Drop in	10:00–16:00		Avenue Campus, Building 65, Room 1177
Study abroad opportunities	10:00–16:00		Avenue Campus, Building 65, North Corridor
Demonstration	10:00–16:00		Avenue Campus, Building 65, lawn
<i>Biochemistry: See Biological sciences</i>			
<i>Biology: See Biological sciences</i>			
AUDIOLOGY			
Subject talk	10:30	45 minutes	Building 13, Level 3, Room 3021
Guided tour and demonstrations	11:30	60 minutes	Building 13, Level 4, Room 4045
Drop in	11:00–13:30		Building 13, Level 4, Room 4045
BIOLOGICAL SCIENCES			
<i>(includes Biology, Biochemistry, Biomedical Sciences, Ecology and Conservation, Neuroscience, Pharmacology and Zoology)</i>			
Subject talk	11:15 13:45 15:00	50 minutes	Building 32, Level 1, Lecture Theatre
Drop in	10:00–16:00		Building 85, Room 2207
Biological Sciences lab demonstrations	10:00–11:10 12:00–13:30 14:20–16:00		Building 85, Room 1021
<i>Biomedical Electronic Engineering: See Electrical and Electronic Engineering</i>			
<i>Biomedical Sciences: See Biological sciences</i>			
BUSINESS			
<i>(includes Business Management, Business Analytics and Business Entrepreneurship)</i>			
Subject talk	10:30 12:30 14:30	40 minutes 40 minutes	Building 2A, Lecture Theatre H Building 2, Level 1, Lecture Theatre 1039
Explore how the Bloomberg Terminal brings together real-time industry market data, breaking news and powerful analytics	09:30–16:30	30 minutes	Building 58 (Murray), Level 1, Room 1053, Bloomberg Trading Suite

■ ARTS AND HUMANITIES
 ■ SCIENCE AND MATHEMATICS
 ■ ENGINEERING AND COMPUTING
 ■ SOCIAL SCIENCES AND EDUCATION
 ■ BUSINESS AND LAW
 ■ EARTH AND ENVIRONMENTAL SCIENCE
 ■ MEDICINE AND HEALTHCARE SCIENCE
 ■ FOUNDATION YEARS

DETAILS	TIME	DURATION	LOCATION*
CHEMISTRY			
Subject talk	10:30 11:00 11:30 12:00 13:00 14:00	30 minutes	Check in at Building 30, Reception area for Lecture Theatre 1 (27/2001) or Lecture Theatre 2 (27/2003)
Department tour	10:00–15:00	30 minutes	Leaves from Chemistry Common Room (Building 29/2067) every 15 minutes
Drop in	09:45–16:00		Chemistry staff and students (Common Room 29/2067)
CIVIL ENGINEERING			
Subject talk	10:30 12:30 14:30	45 minutes	Boldrewood Innovation Campus, Building 176, Level 1
Talk: Which engineering subject should I study? Find out about our engineering subjects and choose the right one for you	10:00 11:00 12:00 13:00	30 minutes	Building 5 (Eustice), Level 2
Drop in	10:00–16:00		Boldrewood Innovation Campus, Building 176, Level 1
The design show: a showcase of our engineering students' project work	10:00–16:00		Boldrewood Innovation Campus, Building 177, Level 3
Visit engineering facilities at Highfield Campus	10:00–16:00		Details (including map) available from Building 18 Information Fair, Building 7, and Boldrewood Innovation Campus Information Point
Visit engineering facilities at Boldrewood Innovation Campus	10:00–16:00		Details (including map) available from Building 18 Information Fair, Building 7, and Boldrewood Innovation Campus Information Point
COMPUTER SCIENCE AND SOFTWARE ENGINEERING			
Overview of degrees in electronics and computer science	10:30 14:30	50 minutes	Building 52, Turner Sims Concert Hall
Taster lecture (topics available at Building 53 welcome desk)	11:00 12:30 13:30 14:30	30 minutes	Building 2A, Arts Annex, Lecture Theatre J
Careers and employability talk	12:00 13:00 14:00	30 minutes	Building 53 (Mountbatten), Level 4, Room 4025
Computing lab tour	09:30 10:00 11:00 11:30 12:00 13:00 13:30 14:00 15:00 15:30	30 minutes	Building 53 (Mountbatten), entrance foyer
Welcome desk and drop in	10:00–16:00		Building 53 (Mountbatten), entrance foyer
CRIMINOLOGY			
Subject talk	12:00	50 minutes	Building 58 (Murray), Murray Lecture Theatre
<i>Ecology and conservation: see Biological sciences</i>			
ECONOMICS			
Subject talk	11:00 13:00 15:00	50 minutes	Building 58 (Murray), Murray Lecture Theatre
Explore how the Bloomberg Terminal brings together real-time industry market data, breaking news and powerful analytics	09:30–16:30	30 minutes	Building 58 (Murray), Level 1, Room 1053, Bloomberg Trading Suite

*Location is on Highfield Campus unless otherwise specified

DETAILS	TIME	DURATION	LOCATION*
EDUCATION/EDUCATION AND PSYCHOLOGY			
Subject talk	12:00	60 minutes	Building 34 (Education), Lecture Theatre
ELECTRICAL AND ELECTRONIC ENGINEERING			
(includes Aerospace Electronic Engineering, Biomedical Electronic Engineering, Electrical Engineering, Electronic Engineering and Mechatronic Engineering)			
Overview of degrees in electronics and computer science	10:30 14:30	50 minutes	Building 52, Turner Sims Concert Hall
Taster lecture (topics available at Building 53 welcome desk)	11:00 12:30 13:30 14:30	30 minutes	Building 2A, Arts Annex, Lecture Theatre J
Differences between Electronic/Electrical specialisms	11:30 13:30	30 minutes	Building 53 (Mountbatten), Level 4, Room 4025
Biomedical Electronic Engineering: subject talk and lab tour	11:30 12:30 13:30 15:30	30 minutes	Building 85, entrance foyer
Careers and employability talk	12:00 13:00 14:00	30 minutes	Building 53 (Mountbatten), Level 4, Room 4025
Teaching lab tour	09:30 10:00 11:00 11:30 12:00 13:00 13:30 14:00 15:00 15:30	30 minutes	Building 53 (Mountbatten), entrance foyer
High Voltage Lab and Electric Power Engineering tour and demo	11:30 12:30 13:30 15:30	30 minutes	Entrance to Building 20 (High Voltage Lab)
Nanotech Clean Room tour	11:30 12:30 13:30 15:30	30 minutes	Building 53 (Mountbatten), entrance foyer
Welcome desk and drop in	10:00–16:00		Building 53 (Mountbatten), entrance foyer
ENGLISH			
Subject talk	11:15 13:15 15:15	45 minutes	Avenue Campus, Building 65, Lecture Theatre A
Tour of Avenue Campus	10:00–15:45 (departing every 15 minutes)	20 minutes	Avenue Campus, Building 65, South Corridor
Drop in	10:00–16:00		Avenue Campus, Building 65, Room 1097
Study abroad opportunities	10:00–16:00		Avenue Campus, Building 65, North Corridor
ENGLISH LANGUAGE AND LINGUISTICS			
Subject talk	13:15	45 minutes	Avenue Campus, Building 65, Lecture Theatre B
Tours of Avenue Campus	10:00–15:45 (departing every 15 minutes)	20 minutes	Avenue Campus, Building 65, South Corridor
Drop in	10:00–16:00		Avenue Campus, Building 65, Room 1163
Study abroad opportunities	10:00–16:00		Avenue Campus, Building 65, North Corridor
ENVIRONMENTAL SCIENCE			
Subject talk	10:15 11:30 13:45	45 minutes	Building 28, Level 1, Room 1021
Drop in	09:45–15:30		Building 28, Level 1, Room 1019
Taster lecture	12:45	45 minutes	Building 28, Level 1, Room 1021

■ ARTS AND HUMANITIES
 ■ SCIENCE AND MATHEMATICS
 ■ ENGINEERING AND COMPUTING
 ■ SOCIAL SCIENCES AND EDUCATION
 ■ BUSINESS AND LAW
 ■ EARTH AND ENVIRONMENTAL SCIENCE
 ■ MEDICINE AND HEALTHCARE SCIENCE
 ■ FOUNDATION YEARS

DETAILS	TIME	DURATION	LOCATION*
FILM STUDIES			
Subject talk	10:15 12:15	45 minutes	Avenue Campus, Building 65, Lecture Theatre C
Tour of Avenue Campus	10:00–15:45 (departing every 15 minutes)	20 minutes	Avenue Campus, Building 65, South Corridor
Drop in	10:00–16:00		Avenue Campus, Building 65, Room 1095
Study abroad opportunities	10:00–16:00		Avenue Campus, Building 65, North Corridor
FINANCE			
Subject talk	11:30 13:30	40 minutes	Building 2, Level 1, Lecture Theatre 1039
Explore how the Bloomberg Terminal brings together real-time industry market data, breaking news and powerful analytics	09:30–16:30	30 minutes	Building 58 (Murray), Level 1, Room 1053, Bloomberg Trading Suite
FOUNDATION YEAR (ENGINEERING, MATHS, PHYSICS, GEOPHYSICS)			
Subject talk	11:00 14:00	45 minutes	Building 5, Level 2
Drop in	11:45–12:45 14:45–15:45		Building 5, Level 2
FOUNDATION YEAR: SCIENCE (BIOLOGY, CHEMISTRY, ENVIRONMENTAL SCIENCE)			
Subject talk	13:40	30 minutes	Building 29, Room 2075
Drop in	13:30–15:30		Building 29, Room 2075
GEOGRAPHY (SEE ALSO POPULATION AND GEOGRAPHY FOR A RELATED COURSE)			
Subject talk	11:30 12:30 13:30	50 minutes	Building 44 (Shackleton), Level 1, Lecture Theatre A
Physical Geography lab drop in	10:00–15:00		Building 44 (Shackleton), Level 1 labs
GEOLOGY			
Subject talk	11:30 15:00	45 minutes	National Oceanography Centre Southampton, Level 4, Charnock Theatre
Tours and demonstrations	09:30–16:00	60 minutes	National Oceanography Centre Southampton, Level 4, reception
Drop in	09:30–17:00		National Oceanography Centre Southampton, Level 4, area outside seminar room
GEOPHYSICAL SCIENCES			
Subject talk	11:30 15:00	45 minutes	National Oceanography Centre Southampton, Level 4, Charnock Theatre
Tours and demonstrations	09:30–16:00	60 minutes	National Oceanography Centre Southampton, Level 4, reception
Drop in	09:30–17:00		National Oceanography Centre Southampton, Level 4, area outside seminar room
HEALTHCARE SCIENCE (CARDIAC PHYSIOLOGY)			
Subject talk	10:30 11:30 14:30	30 minutes	Building 45, Room 2040
Drop in	09:00–16:00		Building 45, Room 0013
Admissions help desk	10:00–15:00		Building 45, Room 1011
Placement zone	10:00–15:00		Building 45, Room 1011

*Location is on Highfield Campus unless otherwise specified

DETAILS	TIME	DURATION	LOCATION*
HISTORY			
Subject talk	10:15 12:15 14:15	45 minutes	Avenue Campus, Building 65, Lecture Theatre A
Tour of Avenue Campus	10:00–15:45 (departing every 15 minutes)	20 minutes	Avenue Campus, Building 65, South Corridor
Drop in	10:00–16:00		Avenue Campus, Building 65, Room 1173
Study abroad opportunities	10:00–16:00		Avenue Campus, Building 65, North Corridor
LAW			
Subject talk (includes subject talk, taster lecture and student experience talk)	11:30 14:00	60 minutes	Building 2A, Lecture Theatre H
MARINE BIOLOGY AND OCEANOGRAPHY			
Subject talk	10:00 13:30 16:00	45 minutes	National Oceanography Centre Southampton, Level 4, Charnock Theatre
Tours and demonstrations	09:30–16:00	60 minutes	National Oceanography Centre Southampton, Level 4, reception
Drop in	09:30–17:00		National Oceanography Centre Southampton, Level 4, area outside seminar room
MARKETING			
Subject talk	11:30 13:30	40 minutes	Building 2, Level 3, Room 3043
Explore how the Bloomberg Terminal brings together real-time industry market data, breaking news and powerful analytics	09:30–16:30	30 minutes	Building 58 (Murray), Level 1, Room 1053, Bloomberg Trading Suite
MATHEMATICAL SCIENCES			
Subject talk: Mathematical Sciences	11:00 13:30	45 minutes	Building 54 (Mathematical Sciences), Level 4, Lecture Theatre 4A (4011)
Subject talk: MMath Mathematical Physics	13:00	30 minutes	Building 54 (Mathematical Sciences), Level 7, Lecture Theatre 7B (7035)
Taster lecture	12:00 14:30	30 minutes	Building 54 (Mathematical Sciences), Level 4, Lecture Theatre 4A (4011)
Explore how the Bloomberg Terminal brings together real-time industry market data, breaking news and powerful analytics	09:30–16:30	30 minutes	Building 58 (Murray), Level 1, Room 1053, Bloomberg Trading Suite
Q&A with Head of Mathematical Sciences and Admissions Tutor	11:45 14:15	60 minutes	Building 56 (Mathematical Sciences Student Centre)
Maths Fair: interactive activities, puzzles and demonstrations by maths staff and students	10:30–14:30		Building 56 (Mathematical Sciences Student Centre)

■ ARTS AND HUMANITIES
 ■ SCIENCE AND MATHEMATICS
 ■ ENGINEERING AND COMPUTING
 ■ SOCIAL SCIENCES AND EDUCATION
 ■ BUSINESS AND LAW
 ■ EARTH AND ENVIRONMENTAL SCIENCE
 ■ MEDICINE AND HEALTHCARE SCIENCE
 ■ FOUNDATION YEARS

DETAILS	TIME	DURATION	LOCATION*
MECHANICAL ENGINEERING			
Subject talk	09:45 11:45 13:45	45 minutes	Building 7 (Lanchester), Level 3, Lecture Theatre A
Talk: Which engineering subject should I study? Find out about our engineering subjects and choose the right one for you	10:00 11:00 12:00 13:00	30 minutes	Building 5 (Eustice), Level 2
Drop in	10:00–16:00		Boldrewood Innovation Campus, Building 177, Level 2,
The design show: a showcase of our engineering students' project work	10:00–16:00		Boldrewood Innovation Campus, Building 177, Level 3
Visit engineering facilities at Highfield Campus	10:00–16:00		Details (including map) available from Building 18 Information Fair, Building 7, and Boldrewood Innovation Campus Information Point
Visit engineering facilities at Boldrewood Innovation Campus	10:00–16:00		Details (including map) available from Building 18 Information Fair, Building 7, and Boldrewood Innovation Campus Information Point
<i>Mechatronic Engineering: See Electrical and Electronic Engineering</i>			
MEDICINE			
Subject talk	10:00 12:30	60 minutes	Building 32, Level 1, Lecture Theatre
MIDWIFERY			
Subject talk	11:15	45 minutes	Building 45, Room 0045
Drop in	10:00–15:00		Building 45, Room 1015
Skills taster session	10:00–15:00		Building 45, Room 1014
Admissions help desk	10:00–15:00		Building 45, Room 1011
Placement zone	10:00–15:00		Building 45, Room 1011
MODERN LANGUAGES AND LINGUISTICS			
Subject talk	10:15 12:15 15:15	45 minutes	Avenue Campus, Building 65, Lecture Theatre B
Tour of Avenue Campus	10:00–15:45 (departing every 15 minutes)	20 minutes	Avenue Campus, Building 65, South Corridor
Tour of the Centre for Language Study	10:15–15:30 (departing every 15 minutes)	30 minutes	Avenue Campus, Building 65, South Corridor
Drop in	10:00–16:00		Avenue Campus, Building 65, Room 1163
Study abroad opportunities	10:00–16:00		Avenue Campus, Building 65, North Corridor
MUSIC			
Subject talk	11:00 14:00	45 minutes	Building 6 (Nuffield), Lecture Theatre A
Performance	12:30	45 minutes	Building 52 (Turner Sims), Concert Hall
Tour of Music department	10:00–15:45 (departing every 30 minutes)	25 minutes	Building 2, Music department, foyer
Drop in	10:00–16:00		Building 2, Room 2061

*Location is on Highfield Campus unless otherwise specified

DETAILS	TIME	DURATION	LOCATION*
NATURAL SCIENCES			
Subject talk	11:00 13:30	30 minutes	Building 85, Room 2209
Drop in	10:00–15:30		Building 85, Room 2211
<i>Neuroscience: See Biological sciences</i>			
NURSING			
Subject talk	10:15 13:15	45 minutes	Building 45, Room 0045
Drop in	10:00–15:00		Building 45, Room 0019
Skills taster session	10:00–15:00		Building 45, Room 1003
Admissions help desk	10:00–15:00		Building 45, Room 1011
Placement zone	10:00–15:00		Building 45, Room 1011
OCCUPATIONAL THERAPY			
Subject talk	12:15	45 minutes	Building 45, Room 2040
Workshop	13:15	60 minutes	Building 45, Room 2040
Drop in	10:00–15:00		Building 45, Room 0007
Admissions help desk	10:00–15:00		Building 45, Room 1011
Placement zone	10:00–15:00		Building 45, Room 1011
<i>Oceanography: See Marine Biology and Oceanography</i>			
<i>Pharmacology: See Biological sciences</i>			
PHILOSOPHY			
Subject talk	11:15 14:15	45 minutes	Avenue Campus, Building 65, Lecture Theatre B
Tour of Avenue Campus	10:00–15:45 (departing every 15 minutes)	20 minutes	Avenue Campus, Building 65, South Corridor
Drop in	10:00–16:00		Avenue Campus, Building 65, Room 1093
Study abroad opportunities	10:00–16:00		Avenue Campus, Building 65, North Corridor
PHYSICS AND ASTRONOMY			
Subject talk	11:00 13:00	50 minutes	Building 46, Level 3, Lecture Theatre A
Tour of building and labs	10:00–16:00	30 minutes	Building 46, foyer
Career destinations talk	13:00 15:00	20 minutes	Building 46, Lecture Theatre C
Planetarium astronomy show	12:00 13:00 14:00 15:00	60 minutes	Building 46, Level 5, seminar room
Meet academics and students	10:00–16:00		Building 46, foyer
Try out a lab experiment (limited spaces)	12:00 13:00 14:00 15:00		Building 46 foyer
PHYSIOTHERAPY			
Subject talk	12:15 14:15	45 minutes	Building 45, Room 0045
Drop in	10:00–15:00		Building 45, Room 1004
Admissions help desk	10:00–15:00		Building 45, Room 1011
Placement zone	10:00–15:00		Building 45, Room 1011

■ ARTS AND HUMANITIES
 ■ SCIENCE AND MATHEMATICS
 ■ ENGINEERING AND COMPUTING
 ■ SOCIAL SCIENCES AND EDUCATION
 ■ BUSINESS AND LAW
 ■ EARTH AND ENVIRONMENTAL SCIENCE
 ■ MEDICINE AND HEALTHCARE SCIENCE
 ■ FOUNDATION YEARS

DETAILS	TIME	DURATION	LOCATION*
PODIATRY			
Subject talk	11:15	45 minutes	Building 45, Room 1020
Drop in	10:00–15:00		Building 45, Room 1004
Admissions help desk	10:00–15:00		Building 45, Room 1011
Placement zone	10:00–15:00		Building 45, Room 1011
POLITICS AND INTERNATIONAL RELATIONS			
Subject talk	10:00 14:00	50 minutes	Building 2a (Arts Annex), Lecture Theatre J Building 58 (Murray), Murray Lecture Theatre
POPULATION AND GEOGRAPHY			
Subject talk	12:30	45 minutes	Building 58 (Murray), Level 1, Lecture Room G
Field trip video	10:00–15:00	five-minute video on loop	Building 58 (Murray), Level 1, Lecture Room A
PSYCHOLOGY			
Subject talk	11:30 13:30	40 minutes	Building 52 (Turner Sims), Concert Hall
QUANTITATIVE SOCIAL SCIENCE			
Meet the Course Leader	11:00	30 minutes	Building 58 (Murray), Level 1, Lecture Room B
SHIP SCIENCE			
Subject talk	11:00 14:00	45 minutes	Boldrewood Innovation Campus, Building 185, Level 3
Talk: Which engineering subject should I study? Find out about our engineering subjects and choose the right one for you	10:00 11:00 12:00 13:00	30 minutes	Building 5 (Eustice), Level 2
Drop in	10:00–16:00		Boldrewood Innovation Campus, Building 185, Level 3
The design show: a showcase of our engineering students' project work	10:00–16:00		Boldrewood Innovation Campus, Building 177, Level 3
Visit engineering facilities at Highfield Campus	10:00–16:00		Details (including map) available from Building 18 Information Fair, Building 7, and Boldrewood Innovation Campus Information Point
Visit engineering facilities at Boldrewood Innovation Campus	10:00–16:00		Details (including map) available from Building 18 Information Fair, Building 7, and Boldrewood Innovation Campus Information Point
SOCIOLOGY AND SOCIAL POLICY			
Subject talk	10:00	50 minutes	Building 58 (Murray), Murray Lecture Theatre
<i>Zoology: See Biological sciences</i>			

Hospital Open Day

The 2018 Hospital Open Day will take place on Saturday 8 September from 10:00–15:30 at Southampton General Hospital.

Explore the Hospital and University Hospital Southampton (UHS), the services they provide, the amazing opportunities available and groundbreaking work taking place.

Find out more at the Medicine stand in the Information Fair in Building 18.

■ ARTS AND HUMANITIES
 ■ SCIENCE AND MATHEMATICS
 ■ ENGINEERING AND COMPUTING
 ■ SOCIAL SCIENCES AND EDUCATION
 ■ BUSINESS AND LAW
 ■ EARTH AND ENVIRONMENTAL SCIENCE
 ■ MEDICINE AND HEALTHCARE SCIENCE
 ■ FOUNDATION YEARS

*Location is on Highfield Campus unless otherwise specified

Spend time relaxing in our outdoor spaces on campus.



EXPLORE THE CITY

Southampton is one of the most lively and dynamic cities in the south of England. As a bustling port city, Southampton has been ranked the third best place to live and work in the UK.*

The city has a rich arts scene, from museums, music venues and art galleries, to magnificent theatres and rich historical buildings such as the Tudor House and Gardens.

If you enjoy shopping, visit Westquay, the region's premier retail destination that also boasts leading dining chains found only in a handful of places outside of London.

Enjoy a freshly brewed coffee in the Cultural Quarter while enjoying a spot of street theatre. Or, if you prefer scenic views, there are plenty of cafés and restaurants by Ocean Village Marina to sit outside and enjoy the sea breeze.

The nightlife in Southampton is buzzing, with popular bars and clubs for you to visit and a variety of student promotions to entice you.

The award-winning parks make Southampton the greenest city in southern England, and Southampton Common has over 300 acres of woodland, parkland and nature trails for you to enjoy.

Why not take one of our free bus services after the Open Day and explore all that the city has to offer?

If you don't have time to visit the city in person, you can still see what Southampton has to offer at our 360 degree virtual experience room, located in the central zone of the Information Fair.

“Southampton is a truly vibrant city that is full of life.”

Emily Fry
BA English, second year

Emily is one of our student bloggers; to follow Emily and fellow students on their adventures in Southampton, see our Life at Southampton blog
www.southampton.ac.uk/blog/life-at-southampton



*Good Growth for Cities Index 2017, Demos-PwC

STUDENTS' UNION



- Dance the night away in the Union's venue for large events, such as gigs and student balls
- Become a DJ or director at the Union's award-winning Surge Radio and SUSUtv
- Try out journalism with one of the Union's award-winning magazines, *Wessex Scene* or *The Edge*

“It’s hard to imagine having that many possibilities at my fingertips ever again in my life, with over 340 clubs and societies, including 94 sports clubs, 30 or so performing arts groups – and the ever-present option of setting something up myself with support from the Union.”

Paul Stevens
BA French and Spanish, 2017

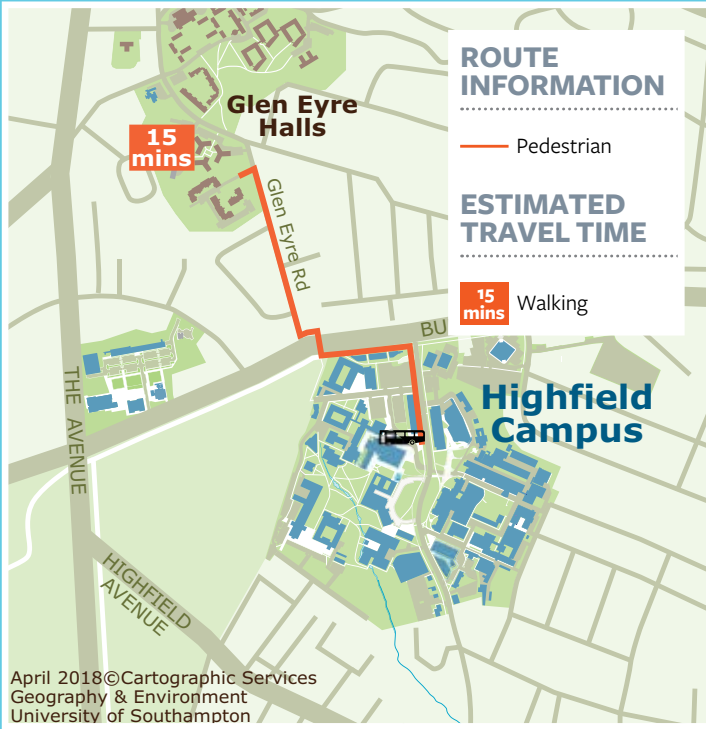
When you join the University, you automatically become a member of the Students' Union. The Students' Union is independent from the University and is run for students by students, to unlock the potential and enrich the life of every student.

- Run for one of the positions in the Students' Union's elections, and become the voice of students across the University
- Experience Freshers', a full programme of activities and events to help you settle in, meet new people and find out more about university life
- Discover a new talent: you can join over 340 sports clubs and societies, from archery, quidditch and performing arts to football, debating and tennis
- Have fun and give back with RAG (Raise and Give), which organises fundraising events to benefit charities
- Eat at The Bridge, with food from a Michelin-trained chef at student prices
- Socialise with friends in The Stag's sports bar and experience their legendary karaoke night
- Catch a film in the 260-seat cinema, run by Union Films, a team of student volunteers



Find out more:
www.susu.org

ACCOMMODATION



A selection of our halls of residence will be available to view during the Open Day. We offer a range of high-quality accommodation, with different room types and locations to suit everyone.

As well as the sites open today, we also have many other halls of residence available for you to apply to live in.

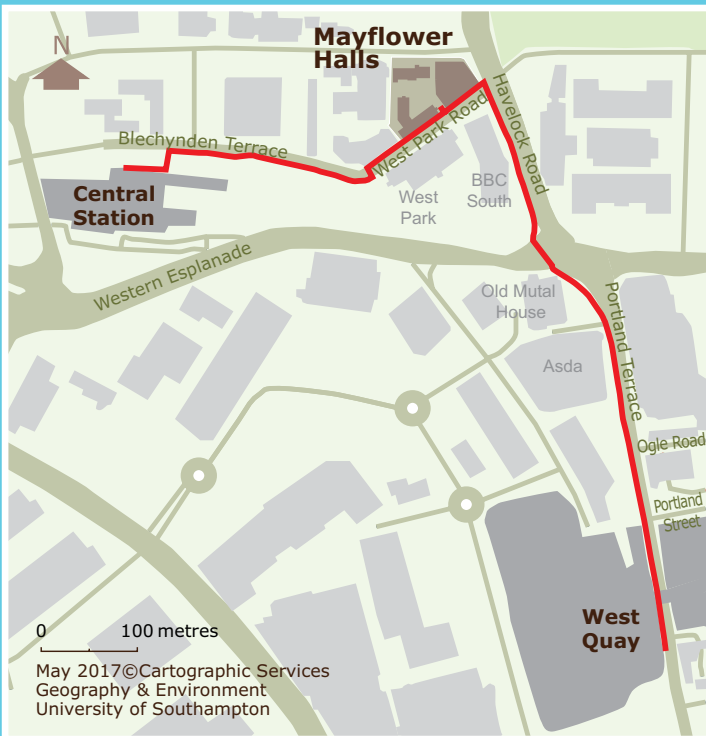
To find out more, please visit our Accommodation team within the Information Fair in Building 18.

Special requirements

If you have any special requirements for your room, need an adapted room, or would like to see an adapted room on the Open Day, please speak to our Accommodation team at the Information Fair, or at one of our halls sites.

Glen Eyre Halls

Open for viewing between 10:00 and 16:30



Mayflower Halls

To view Mayflower Halls, take the shuttle bus to Southampton Central train station and follow the AA walking route signs.

Open for viewing between 12:00 and 17:00





01



02

03



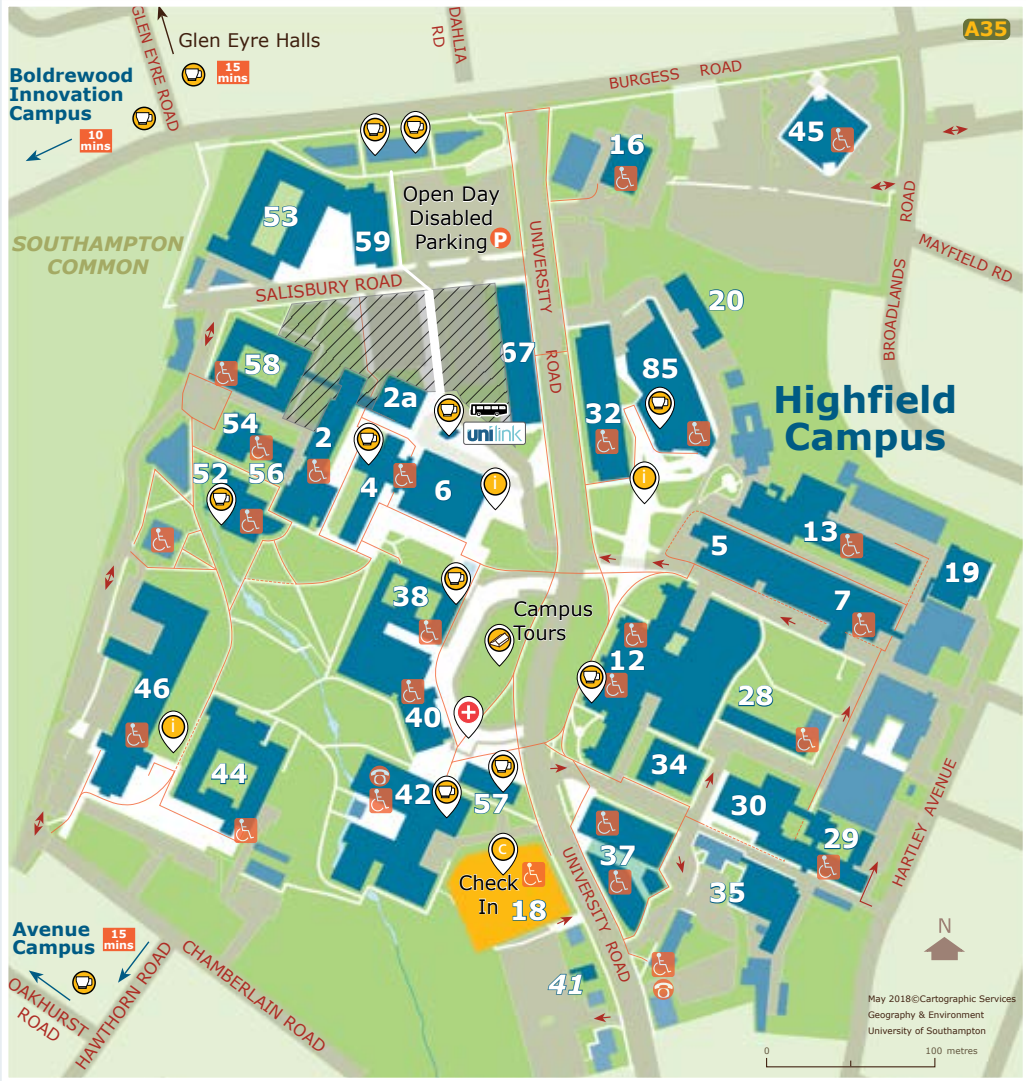
“My halls were excellent; close to uni, clean, comfortable and homely. I also had the pleasure of making some amazing friends. The brilliant thing about staying in halls, I think, is how social it is.”

Benedict Landauer
BA Music, third year

- 01 Glen Eyre complex, common room
- 02 Spacious accommodation at Mayflower Halls
- 03 Mayflower Halls, Southampton
- 04 Glen Eyre Halls accommodation
- 05 Chamberlain Halls, Glen Eyre complex

HIGHFIELD CAMPUS MAP

Highfield Campus is our main campus and caters for most of our academic courses. Incorporating state-of-the-art research and teaching facilities, it boasts new and refurbished student facilities such as the Students' Union and the Jubilee Sports Centre.



KEY	New South Gower building zone	Information Point	Parking for disabled persons
	Building numbers	Catering Outlet	Toilets for disabled persons (with wheelchair access)
	Information Fair	Marquee	Accessible payphone
	Footpaths	First Aid	Wheelchair route (unaided)
	Highfield Interchange		Wheelchair route (with assistance)

“I love the variety we have at Southampton; despite being right by the city there is plenty of green space. We are so lucky to have such a nice working environment.”

Caroline Ambrose

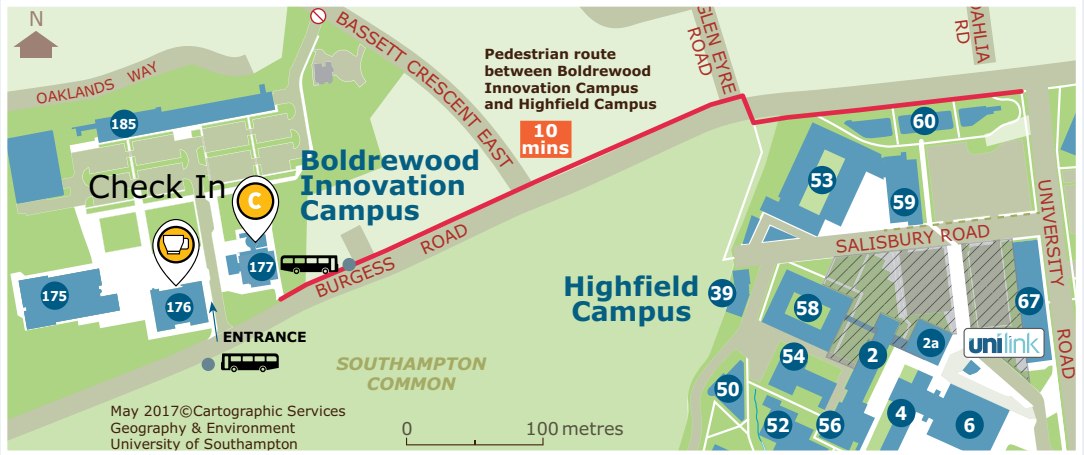
BSc Geography, third year



CAMPUS MAPS

BOLDREWOOD INNOVATION CAMPUS ROUTE TO HIGHFIELD CAMPUS

A short walk from Highfield Campus, our new Boldrewood Innovation Campus houses our centre for innovation, business and education in maritime engineering and engineering sciences.

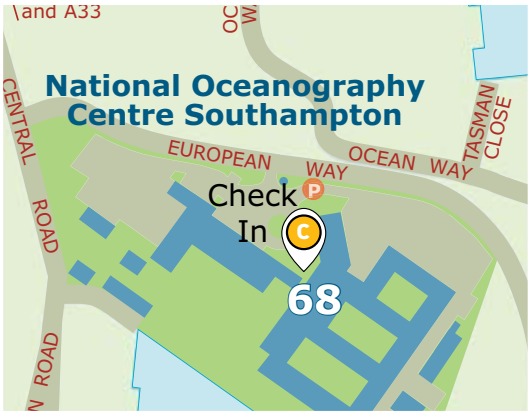


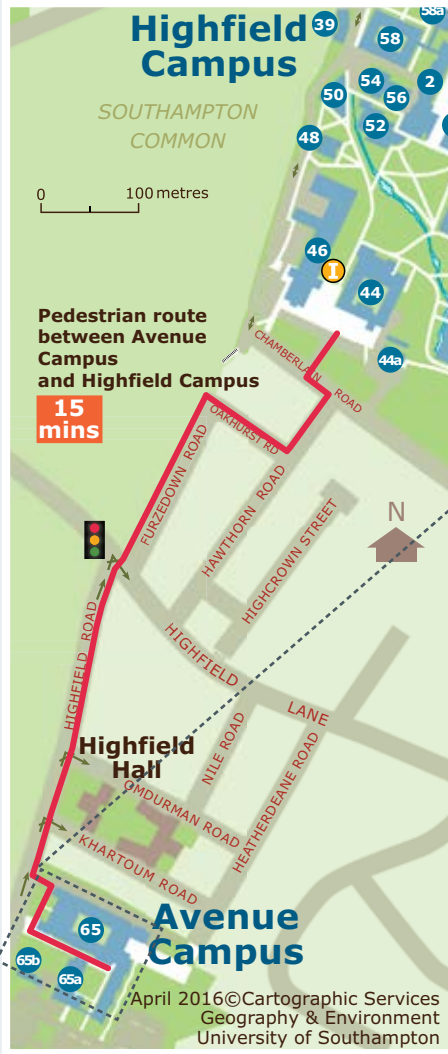
Boldrewood Innovation Campus

NATIONAL OCEANOGRAPHY CENTRE SOUTHAMPTON

Our waterfront campus is one of the world’s leading research centres for the study of ocean and earth sciences.

Pre-booked parking is available at the National Oceanography Centre Southampton (NOCS) for those interested in subjects based at the campus. NOCS can be accessed by bus from Westquay and Southampton Central train station, as well as from Highfield Campus. Student ambassadors will be available to direct you to the correct bus.





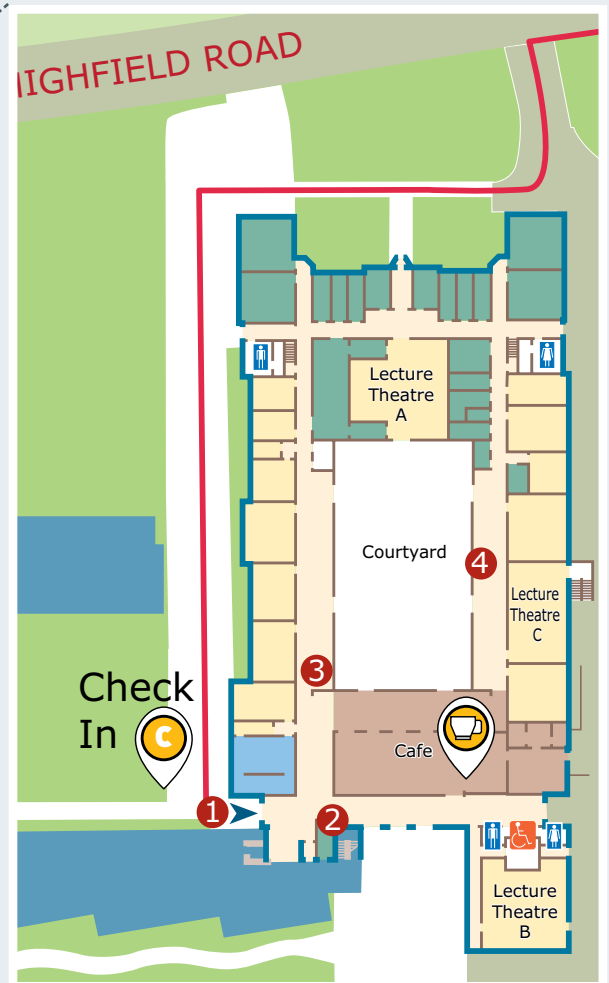
AVENUE CAMPUS MAPS

Our humanities campus houses a state-of-the-art purpose-built Archaeology Building and is located on the edge of Southampton Common, a short walk from Highfield.

If you are arriving at Avenue by bus, you will be dropped off and picked up on The Avenue (A33). Look out for student ambassadors who will direct you between the bus stop and the campus.

KEY

- 1 Main entrance
- 2 Information desk
- 3 Avenue Campus tours meeting point
- 4 Study abroad opportunities



Accessible routes

There will be a limited number of wheelchairs available at the information point at the interchange, on Highfield Campus (next to Building 6) – please enquire here. Wheelchair routes and disabled toilets are indicated on our campus maps.

CATERING FACILITIES

A wide variety of restaurants and cafés will be open around the University, offering a range of refreshments from drinks and snacks to full meals.

BUILDING 38, STAFF SOCIAL CENTRE		
B38 Starbucks	09:00–16:00	All your favourite Starbucks drinks, pastries, cakes and muffins
Café express 38	09:00–15:00	Hot and cold drinks, sandwiches and snacks
Terrace Restaurant	11:30–14:30	Variety of traditional and international hot meals, salads and sandwiches
The Arlott Bar	08:30–17:00	Barista made hot and cold drinks. Tasty pastries, baguettes, cakes and muffins
STAFF SOCIAL CENTRE FRONT LAWN		
Tasty street food	11:00–15:00	Including BBQ, New Orleans gumbo, fire-baked pizzas, loaded jackets, hot dogs, sweet treats and a fresh fruit smoothie bar
BUILDING 12, HARTLEY LIBRARY		
Library Café	09:00–15:00	Sandwiches, salads, snacks, hot and cold drinks
INTERCHANGE KIOSK GRAB & GO		
Kiosk	08:00–15:30	Sandwiches, snacks, hot and cold drinks
BUILDING 42		
Piazza Food Court	08:30–15:00	Breakfast offers, pizzas, traditional meals, street food, snacks, sandwiches
Piazza Starbucks	08:30–16:00	All your favourite Starbucks drinks, delicious cakes and muffins
BUILDING 85		
Café 85	09:00–15:00	Hot and cold drinks, sandwiches and snacks
NATIONAL OCEANOGRAPHY CENTRE SOUTHAMPTON (NOCS)		
NOCS Café	08:30–16:00	Barista-style hot drinks, traditional hot food, cold drinks, sandwiches, cakes and snacks
AVENUE CAMPUS		
Avenue Café	08:30–16:00	Barista-style hot drinks, cold drinks, sandwiches, cakes and snacks
Blazing Trails BBQ	11:30–14:30	Traditional BBQ offering a variety of tasty bites
BOLDREWOOD INNOVATION CAMPUS		
Boldrewood Café	09:00–16:00	Barista-style hot drinks, cold drinks, cakes, cookies, muffins and a selection of hot food
STUDENTS' UNION		
The Shop	10:00–16:00 (Saturday 8 September) 11:00–15:30 (Sunday 9 September)	Great value and convenience for a range of groceries and products, situated next to the Students' Union
The Stag's	11:30–19:00	Offers a large range of alcoholic and soft drinks, and great deals on food, including pizzas and hotdogs
The Bridge	08:00–15:30	A bistro bar offering a variety of hot food, salads, cakes and drinks

YOUR PLANNER

Use this planner to build your day around the events that interest you, to help you get the most out of your day.

Remember to allow enough time to walk/travel between buildings or campuses. See page 7 for approximate travel times.

Please also remember that some talks are very popular, so plan some contingencies in case you find a talk is full and you have to return later.

Don't forget to have your ticket ready to be scanned.

TIME	EVENT	VENUE	CAMPUS
09:00			
09:15			
09:30			
09:45			
10:00			
10:15			
10:30			
10:45			
11:00			
11:15			
11:30			
11:45			
12:00			
12:15			
12:30			
12:45			
13:00			
13:15			
13:30			
13:45			
14:00			
14:15			
14:30			
14:45			
15:00			
15:15			
15:30			
15:45			
16:00			
16:15			
16:30			
16:45			
17:00			
17:15			
17:30			
17:45			
18:00			



Find out more:

www.southampton.ac.uk/visit

UK and EU enquiries:

visit@southampton.ac.uk

+44 (0)23 8059 9699

International enquiries:

international@southampton.ac.uk

+44 (0)23 8059 9699



DISCLAIMER

This document is for information purposes only and is prepared well in advance of publication. While the University of Southampton uses all reasonable efforts to ensure that all statements, information and data contained in this document are accurate as at the date of publication, it reserves the right to make revisions or modifications to such statements, information or data at any time and accepts no responsibility for the consequences of any such revisions or modifications.

© University of Southampton 2018

This document can be made available, on request, in alternative formats such as electronic, large print, Braille or audio tape, and in some cases, other languages.



CarbonNeutral.com



When finished with this document please recycle it.