



Focusing on the next generation

Read our interactive guide explaining why you should
learn to teach at the University of Southampton

Show your class **Learn to teach.**



Welcome

On behalf of all the tutors and staff at the University of Southampton, we'd like to welcome you to what we hope is the beginning of a wonderful and rewarding career in teaching.

The University of Southampton is a very special place. As a Russell Group University, we're in the top 1% of universities globally; we are proud of our academic credentials. That culture of excellence in teaching and research is central to everything we do.

So, when an institution has this kind of pedigree, you can rest assured that it can deliver a range of quality courses delivered by an excellent team. We provide a unique combination of experienced, practically minded tutors backed up by world class, cutting edge research.

So regardless of whether you're interested in teaching primary, secondary or further education, you'll find the right course here at Southampton.

We hope you find the material in this brochure useful, and we look forward to welcoming you onto one of our courses.

If there is anything else we can do to help you on your journey to becoming a teacher please feel free to [contact us](#).

“ Our excellent network of schools and colleges, ensures you get the support, knowledge and challenge necessary to become an inspiring teacher. ”

Show your class **Learn to teach.**

TOP 20

UK research university
with consistently high
scores for teaching and
learning activities**

Usually
100%
Employability

“ Very good training
at the university and
the university tutors’
pedagogical expertise and research
profile greatly enhance
trainees’ knowledge.
Ofsted 2014 ”

“ There are high-quality opportunities
provided for trainees to follow their
own areas of interest, or extend
their experiences, which ensure that they do
as well as they can. The partnership produces
consistently good quality entrants
to the profession who are highly
regarded by employers.
Ofsted 2014 ”

TOP 1%
of global
universities

** The Guardian University Guide 2015,
The Times Good University Guide 2015,
The Complete University Guide 2015

Contents

You’ve decided to teach.
What questions do you have?

	PAGE
Why choose the University of Southampton?	4
Our partnership area	5
Interested in University led training?	6
Interested in School Direct training?	7
Thinking of teaching Primary?	8
Thinking of teaching Secondary?	9
Thinking of teaching Further Education?	10
Do I qualify?	11
Where do I find more details?	12
What are my next steps?	13
What is Subject Knowledge Enhancement?	14
Frequently Asked Questions	15
Who do I contact?	16

Show your class Learn to teach.

Why choose the University of Southampton?

1.

We're a global university



The University of Southampton belongs to the Russell Group, an organisation that represents 24 of the UK's universities, which are in the top 1% of universities across the world. These institutions are committed to delivering the most effective research, as well as an outstanding teaching and learning experience.

2.

We're in a superb location



We have a fantastic location at the heart of our historic port city with 300 acres of green space, ideally placed between the New Forest National Park and the Solent coast. Serving as a gateway to the South of England, Southampton has outstanding transport links, allowing easy travel for trainee teachers wishing to commute from other locations. The city is less than 80 miles from London.

3.

We have excellent partnerships



The University of Southampton's Education School enjoys strong, established partnerships with a wide variety of alliances, schools and colleges across Southampton, Hampshire, Portsmouth, Wiltshire Dorset and the Isle of Wight. Our trainee teachers benefit from the support of school mentors and University tutors who work closely together to ensure the best possible outcomes.

Show your class **Learn to teach.**

Our partnership area

Our partnership covers an extensive area, which enables us to offer a wide range of school experiences, from large urban secondary schools to small rural primary schools. This is a super place to learn your trade, and to work as a teacher.



Thank you for the great training you gave our trainees. All three are now in our employment, and they are absolutely amazing. This partnership really does work!

Primary headteacher

University tutors are supportive and helpful, and the trainees benefit from having access to both University and school mentors.

Curriculum mentor

The partnership produces consistently good quality entrants to the profession, who are highly regarded by employers.

Key finding, Ofsted 2014

The programme at Southampton was brilliant. Lots of time in school, but hugely supported by the University. The tutors and mentors were amazing.

Newly qualified teacher

Show your class **Learn to teach.**

Interested in University led training?

**Teachers, trainee teachers
and tutors explain more about
how University led training
works within the Southampton
University Partnership.**

“

The university
tutors are all
ex-teachers, you can tell they are
passionate, they love teaching
teachers. They seem to know
everything, and you want to
come across like that to your
students.

**Southampton
University
trainee
teacher**

”

Show your class **Learn to teach**

Interested in School Direct training?

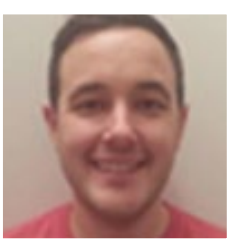


Teachers, trainee teachers and tutors explain more about how School Direct works within the Southampton University Partnership, and what it really feels like to be in a school.

“ The support
is why I’m still
here now. It’s been brilliant.
**Southampton
University
trainee
teacher** ”

Show your class Learn to teach.

Robert Lock



Why did you want to become a teacher?

I'm passionate about learning, so the opportunity to help others realise their dreams, and fulfil their potential prompted me to change careers. I guess I always wanted

to be a teacher and I'm so pleased that the School Direct route has allowed me to get into teaching.

Why did you choose Southampton University and the Portswood Teaching School Alliance?

The excellent reputation of both Southampton University and Portswood Teaching School Alliance were a major attraction for me. Both have provided outstanding training and experiences that help me grow my career. We receive a sound theoretical knowledge combined with excellent practical training opportunities that you can put straight into the classroom. Teaching alongside a class teacher mentor for a full school year allows you to get to know the essential routines of working in a school whilst allowing you to also develop your teaching, planning and assessment skills.

Any words of advice for people thinking of teaching?

Get some school experience - you need to be sure this is for you. Stay organised, it's busy and there's a lot of things to juggle. Go for it!

Thinking of teaching Primary?

Choose this route and you will be ready for the excitement, fun and variety of a primary school.

We offer both University-led and School Direct routes on the Primary PGCE.

Both involve spending at least two-thirds of the course in two different schools.

You can choose a University-led Primary course if you'd like to spend more time with us in university, learning more about the National Curriculum, the theory of education, and participating in seminars and lectures which stretch your knowledge. You can draw on our expertise and have two similar length placements. Or, if you want to immerse yourself in one school with a short placement at another, a School Direct course could be for you.

Our partnership includes schools across Southampton, Hampshire, Bournemouth, Poole, Dorset, Wiltshire and the Isle of Wight.

Regardless of your route, as you move through the course the unique combination of experienced school mentors, academic expertise from tutors and the support of your fellow trainee teachers means you make rapid progress. Before long, you'll be leading small groups of learners, preparing lessons and reflecting on your progress! Linking theory and practice will give you the strong foundations needed for a successful long-term career in teaching.

Many primary schools are looking for teachers who can lead subject areas, so we offer all our trainee teachers the chance to specialise and personalise your course. There are a range of options including physical education, mathematics, and additional activities such as e-safety, PSHE, children's literature, outdoor learning, special educational needs and modern foreign languages. There's also the chance to spend two weeks in Kenya as part of your course – this is an amazing opportunity to gain an insight into the realities of how education can really change lives.

PE
specialist

Specialist
options

Maths
specialism

Show your class **Learn to teach.**

Thinking of teaching Secondary?

Excellent
tutor
support

Strong
partnerships

Reflective
practitioners

Choose this route and you will be ready for the challenge, creativity and variety of a secondary school.

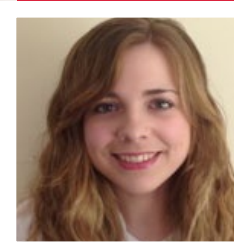
We want you to be able to train in the way that works for you.

That's why we offer both School Direct and University-led one-year, postgraduate courses on the Secondary PGCE. Both involve spending at least two-thirds of the course in two different schools. You can choose a University-led course if you'd like to spend more time with us in university, learning more about the National Curriculum, the theory of education, and participating in seminars and lectures which stretch your knowledge. Or, if you want to immerse yourself in one school with a short placement at another, a School Direct course could be for you. Our partnership includes schools across Southampton, Hampshire, Bournemouth, Poole, Dorset, Wiltshire and the Isle of Wight.

Regardless of your course choice, you'll have experienced tutors guiding you every step of the way. We immediately get you into the classroom so you can learn the practicalities of lesson planning, behaviour management and assessment. Your tutor, mentor, and other departmental colleagues, will support you with lesson observations, feedback and resources. There's always someone by your side.

At the University of Southampton, we provide subject-focussed seminars, workshops and practical sessions, so you learn in a variety of interesting ways. Under the guidance of experienced University academics, you also spend time with your fellow trainee teachers, reflecting on your learning. Through linking theory to practice, while analysing and evaluating your own learning, you will become an excellent, reflective, classroom practitioner. Training to teach in a world-class university means, no matter which course you select, you'll get the best possible start to your new career.

Sophie Mitchell



Secondary Science
University-led PGCE

Why did you choose the PGCE?

During my Science degree, I realised I wanted to have a career in which I could talk to people about science every day - and make them

as passionate about the subject as I am. Teaching was a natural fit.

I decided on the University-led course as I had just finished university and was really comfortable in that environment.

How was the course?

I was placed at two really different schools. This provided me with variety, and the chance to develop a range of skills which I can now apply throughout my career.

The structure was excellent. We were given guidance and support throughout - and every session was useful. I am forever grateful to the university and my host schools!

Top tip?

It's normal to be afraid and nervous, and making mistakes is how we learn. But teaching has changed my life. I guarantee it will change yours.

Show your class **Learn to teach.**

Pauline Dixey

Programme Director PGCE FE

Why do trainees choose this course?

Trainees are attracted to this exciting course as they want to teach adults or young people usually aged above 16. Trainees have the opportunity to teach a wide range of subjects including law, film, dance, history, sport, maths, English and environmental sciences. The diversity of subjects within the group is unique to the FE-PGCE and many really enjoy this aspect of the course, as experiences and ideas are shared widely. Trainees also value very highly the support provided whilst on the course. I am always available to offer ideas or advice.

Where can trainees go from here?

Employment outcomes are high. Recent trainees have secured full time teaching posts in FE, sixth forms and also in schools. Some go onto higher level study and all are very well equipped to meet the demands of teaching in this sector.



Thinking of teaching Further Education?

Choose this route and you will be ready for the focus, diversity and variety of an FE College.

The University of Southampton Further Education PGCE is a one-year, full-time course for graduates with GCSE or equivalent in English and maths who would like to teach in a Further Education or Sixth Form setting. By combining University and college based experiences, you develop your understanding of the theory behind the learning as well as your practical skills, ensuring you can plan, deliver and assess excellent lessons.

Normally you spend three days a week with your placement college. Initially you will be observing lessons, and then working with small groups and building your experience, until you have the skills and confidence to lead whole-class activities. One day a week is spent at the University attending workshops, seminars and sharing learning with fellow trainees. Your fifth day is for private study or part-time work. This combination of theory and real-world experience ensures you have the practical teaching skills and the necessary detailed subject knowledge to become a valued and effective teacher. As an addition to your other academic work, we encourage you to undertake a short research project exploring some element of teaching and learning within FE.

Training to Teach in a world-class university means you'll get the best possible start to your new career. For more information on Further Education teaching email Pgcefe@soton.ac.uk.





Flexible
choicesUniversity
trainingQuality
placements

Show your class **Learn to teach.**

Do I qualify?





Primary PGCE

To qualify for PGCE Primary, you must have (or expect to have)



-  GCSE passes or equivalent, at Grade C or above in English language, mathematics and science
-  Good honours degree
-  Passed the Professional Skills Tests
-  Classroom observation experience

Secondary PGCE

To qualify for PGCE Secondary, you must have (or expect to have)

-  GCSE passes or equivalent, at Grade C or above in English language and mathematics
-  Good relevant honours degree
-  Passed the Professional Skills Tests
-  Classroom observation experience

Further Education PGCE Learning and Skills Sector

-  GCSE passes or equivalent (Literacy and Numeracy Level 2)
-  Good honours degree

Show your class Learn to teach.

Let's focus on detail

The courses share some common elements. Our straightforward table lets you see at a glance which of our courses is best for you.

	Primary PGCE (University-led)	Secondary PGCE (University-led)	School Direct - Training (Primary and Secondary)	School Direct - Salaried (Primary and Secondary)
120 school days	✓	✓	✓	✓
60 university training days	✓	✓		
20 university training days; 40 school training days			✓	✓
Good honours degree	✓	✓	✓	✓
Three years' work experience				✓
Bursary dependent on subject, phase and degree classification	✓	✓	✓	
Unqualified teacher salary				✓
£9K fee	✓	✓	✓	
Professional skills tests	✓	✓	✓	✓
Classroom observation experience	✓	✓	✓	✓
Master's credits	✓	✓	✓	✓

Show your class **Learn to teach.**



What are my next steps?

You want to teach Primary or Secondary?

Do you have the right qualifications?

Are you clear on which of our courses is best for you?

If so, great news, you can begin the application process immediately.

You apply via UCAS. Once you get your application in, you can also track its progress using the UCAS system.

All our school trainee teachers must also pass the Professional Skills Tests before they start training with us. These tests ensure tomorrow's teachers have the necessary numeracy and literacy skills to work in our schools. They do not assess your specialist subject knowledge.

There is more information, including detailed information on the literacy and numeracy tests, available online.

And don't forget, if you think you'd benefit from a skills boost, there are Subject Knowledge Enhancement courses out there which may be useful.

If you are interested in making an FE application you should contact us directly and we'll help you through the process.

Our
UCAS
code is
S27

The
application
process

right
qualifications?

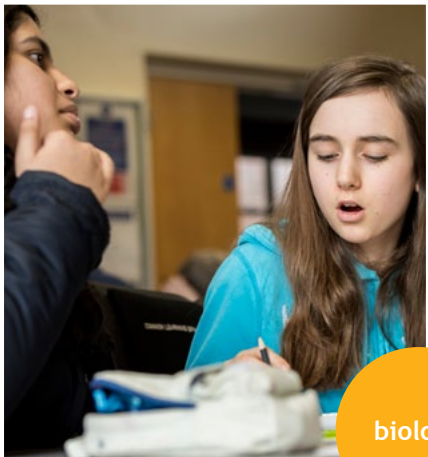
which
course?

UCAS
application

Show your class Learn to teach

What is Subject Knowledge Enhancement?

Specialise



biology

physics

computer
science

mathematics

We want to get the best teachers into our country's classrooms. This means supporting every trainee teacher who has the potential to deliver great lessons and inspire the next generation. We offer opportunities, through completing a University of Southampton Subject Knowledge Enhancement course prior to your PGCE, to train to teach computer science, mathematics, biology or physics, even if you don't currently have the required qualifications or detailed knowledge.

Perhaps you have a degree that is closely related, but not identical, to your preferred subject. You might be a graduate with a relevant A-level, but not a degree in the subject you would like to teach. Or you might need some help transferring your professional experience into a classroom environment.

Whatever the reason, a Subject Knowledge Enhancement course is ideal if you have the right qualities and enthusiasm to teach one of these subjects, but just need some additional subject support.

The courses are delivered in-house by our recognised experts, they are fully funded – you won't pay tuition fees – and you may be eligible for a bursary of up to £5,600 to support you through your course..

Courses are between 12 and 28 weeks long depending on your subject, qualifications and experience.

For further information about all SKE courses email us at ITTAdmissions@soton.ac.uk

Specialise

Show your class Learn to teach.



FAQs

Q. How much are the tuition fees?

A. The fee is £9,000 – this would be the same with all providers. You may be eligible for a bursary to help with fees and living costs. With salaried posts you will be paid as an unqualified teacher but you won't be eligible for any bursaries

Q. I'm a recent graduate, can I apply for a School Direct Salaried role?

A. No. This is for graduates, normally career changers, with a minimum of three years of experience in the workplace. There is more detailed [information available online](#).

Q. Am I guaranteed a bursary regardless of what route I choose?

A. No. The [Department for Education](#) has more information on bursaries. Their value is dependent on the course you choose and your qualifications.

Q. How much school experience do I need?

A. Ideally you would spend about a week in school before you come to interview, but we may ask you to spend more time in school before you begin the course.

Q. I have GCSE's in English and mathematics. Do I need to do the Professional Skills Tests?

A. Unless you are applying for PGCE - FE, all applicants must pass the [Professional Skills Tests](#) before they begin their training.

Q. I haven't got all the GCSEs that are needed for teaching, what can I do?

A. For more information on equivalency tests [contact us](#) at the University.

Q. Can I do these courses part-time?

A. No, they are all full-time courses.

Q. I gained my qualifications outside the UK, am I still eligible?

A. Yes. You will need a statement of compatibility from [UK NARIC](#).

Q. Am I guaranteed a job at the end of my training?

A. No you are not, but every year well over 90% of our PGCEs are employed as teachers, many in our partnership schools.

Q. Will I gain masters credits?

A. Nearly all our trainee teachers complete their three assignments at masters level and gain 30 ECTS credits, a third of a masters.

Q. What personal qualities are you looking for?

A. A passion for teaching and giving children the best start. Working with young people is fun and fast paced. You'll have to think on your feet, be happy with change and be ready for almost anything.

Q. I already have a lot of teaching experience, are there any other ways I can qualify?

A. If you have been working as an unqualified teacher in the UK for more than 2 years you may qualify for the [Assessment Only](#) route.

Q. What is your UCAS training provider code?

A. Our training provider code is S27

Q. If I'm clear on which option I want to select what should I do next?

A. [Go to the UCAS site and put your application in](#). We look forward to hearing from you - you can begin your application immediately.

Q. Where can I find out about Initial Teacher Training?

A. The Department for Education's ["Get into Teaching"](#) site has a wealth of useful information including details about their [School Experience Programme](#).

Q. I'm unsure about a few things. Is there someone I can speak to directly?

A. Yes – come along to our [next open event](#) to discuss all the questions that you may have. Alternatively, [contact us directly](#) and your query will be directed to the relevant member of staff.

Show your class Learn to teach.



Who do I contact?

Southampton Education School
University of Southampton
Building 34
Southampton SO17 1BJ
United Kingdom

www.southampton.ac.uk/showyourclass
UK and EU enquiries:
ITTAdmissions@soton.ac.uk
+44 (0)23 8059 7269