

# **Dyslexia Services**

Winchester School of Art

## **Student Handbook**

**2009 - 2010**



**Education Support**  
**Supporting you to succeed**

## **Dyslexia Services at WSA**

Allene Tuck, the dyslexia tutor assessor, is at WSA on Mondays, Thursdays and Fridays in Room A2025, first floor, Reception/Admin Building. Contact the Student Office (023 80 596913) or email Allene on [at7@soton.ac.uk](mailto:at7@soton.ac.uk) to book an appointment.

## **Dyslexia Services**

(previously Learning Differences Centre)  
45 University Road  
University of Southampton  
Highfield  
Southampton  
SO17 1BJ

Telephone: 023 8059 2759

(internal: 22759)

email: [dyslexia@soton.ac.uk](mailto:dyslexia@soton.ac.uk)

[www.soton.ac.uk/edusupport/dyslexia](http://www.soton.ac.uk/edusupport/dyslexia)

## Contents

About Dyslexia Services .....	4
Dyslexia Services staff .....	4
How to find us at Winchester School of Art .....	5
Individual academic study skills tutorials .....	6
More about tutorials .....	7
Registering with Dyslexia Services .....	8
After your assessment .....	9
What are special examination arrangements?.....	10
Overlay tests.....	10
What do we mean by 'Assessment'? .....	11
Disabled Students' Allowance (DSA).....	12
Feedback.....	13
Complaints.....	13
Further Information.....	14
Contacting Dyslexia Services.....	16

If you have specific learning difficulties you need to **register with Dyslexia Services** as soon as possible.

If you do not register, you will **not** be able to access support or receive special exam arrangements.

It doesn't matter if you already have your DSA, you **still** need to be registered with us.

Don't forget to book **one-to-one** academic skills support with our specialist tutors.

## **About Dyslexia Services**

- We offer advice and support to all students with specific learning difficulties, such as dyslexia or dyspraxia
- We are part of the University's Education Support Service
- We have a team of dyslexia tutor/assessors
- We make recommendations for special exam arrangements
- We can advise you about Disabled Students' Allowance (DSA)
- We provide individual academic study skills. tutorials to help you develop effective study techniques
- We offer coloured overlay tests.
- The Assistive Technology Service (ATS) in the Library is now part of Dyslexia Services.

## **Dyslexia Services staff**

**Janet Skinner**, Head of Dyslexia Services

**Trish Van Der Byl**, secretary/receptionist

**Allene Tuck**, Dyslexia tutor/assessor at WSA

## **Dyslexia tutor/assessors**

Gail Alexander      Jane Lapraik      Jane Warren  
Fanny Middleton

## **Dyslexia tutors**

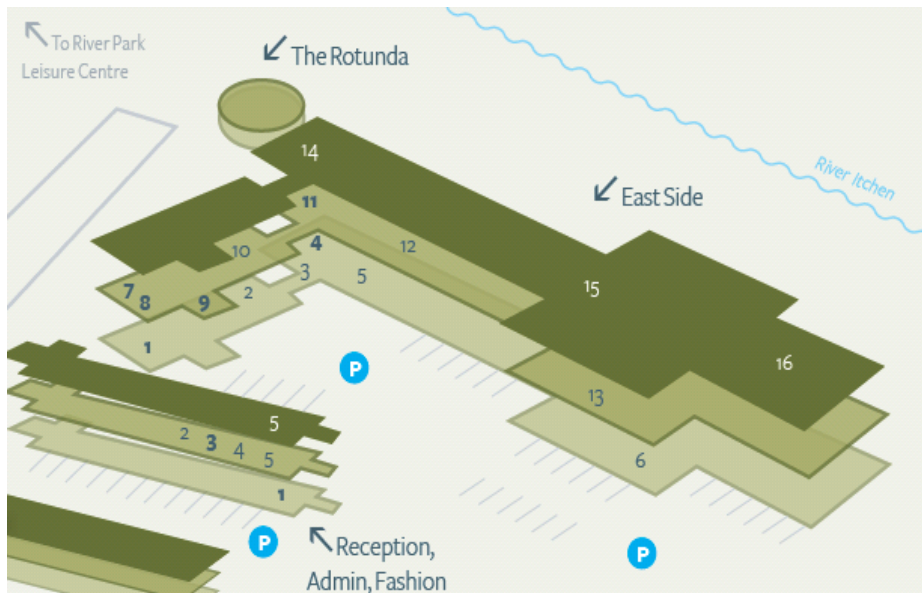
Susan Rutter      Dianne Sherwood      Sue  
McKenna

## **Assistive Technology Officer**

Andrew Dykes

## How to find us at Winchester School of Art

This map shows you how to find Dyslexia Services. We are on the first floor in the Reception and Admin Building.



Dyslexia tutorials, screenings and overlay tests are also available at **Highfield campus, Southampton, St. Mary's Hospital, Portsmouth, North Hants Hospital, Basingstoke**. Tutorials are also available by **distance learning** when necessary.

## Individual academic study skills tutorials

Do you want to...

- aim for better grades and invest in your future?
- be an independent learner?
- save time by discovering transferable skills?
- learn techniques you can use in the workplace?

If you do, book one-to-one, tailor-made tutorials with us!

We can help you to:

- improve your memory
- manage your time (and your course) better
- plan and structure your assignments
- develop your academic writing skills
- edit and revise your work
- revise more efficiently
- read faster and more selectively

The rest is up to **you**. We can't:

- proofread your work for you
- help with subject-specific content
- solve all your problems in one tutorial!

Tutorials are available at:

- Highfield
- Winchester School of Art
- St Mary's Hospital, Portsmouth
- Basingstoke Hospital

## More about tutorials

You **don't** need to wait until you have received your Disabled Students' Allowance (DSA) to book tutorials.

Your DSA assessment may only recommend 10 dyslexia support tutorials. **We can help you to apply for more so please don't save them up.** Book now!

**BUT** if you don't turn up to a booked tutorial or cancel at short notice, your DSA allowance will be charged.

## What our students say about our tutorials

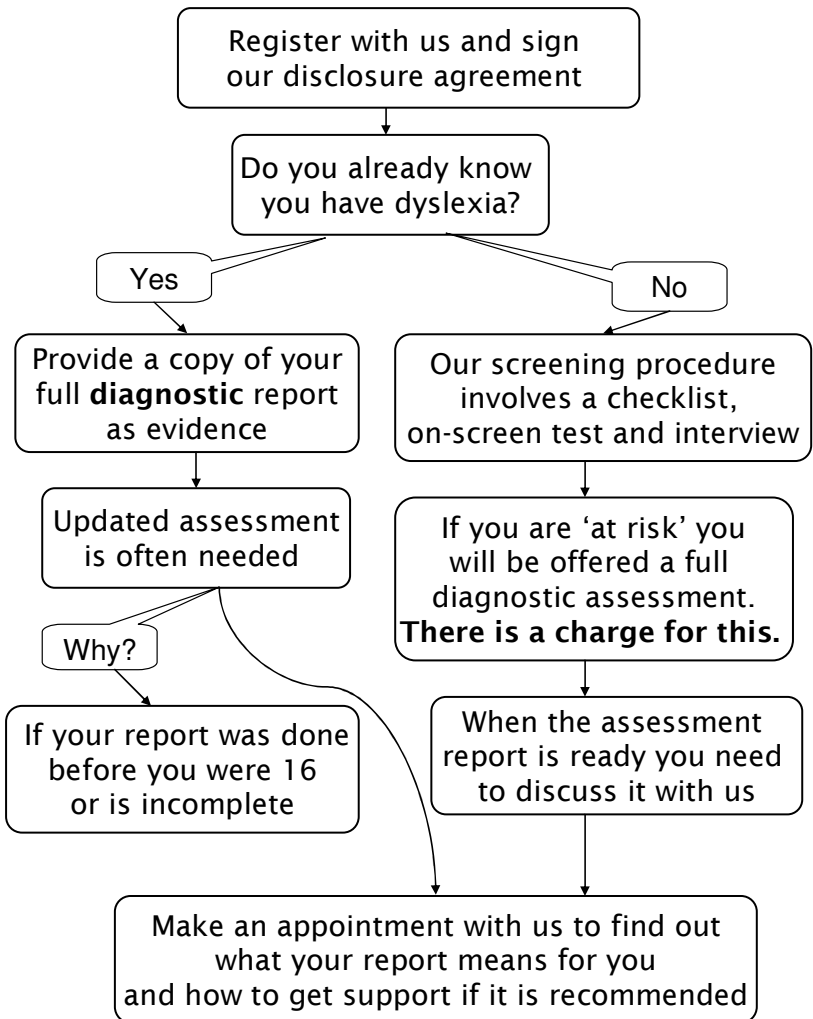
I could not have completed my assignment without my tutor. She is a valuable resource and I will need her until I finish my course.

Excellent! After a 10 year gap in Education, these tutorials have been a lifesaver!

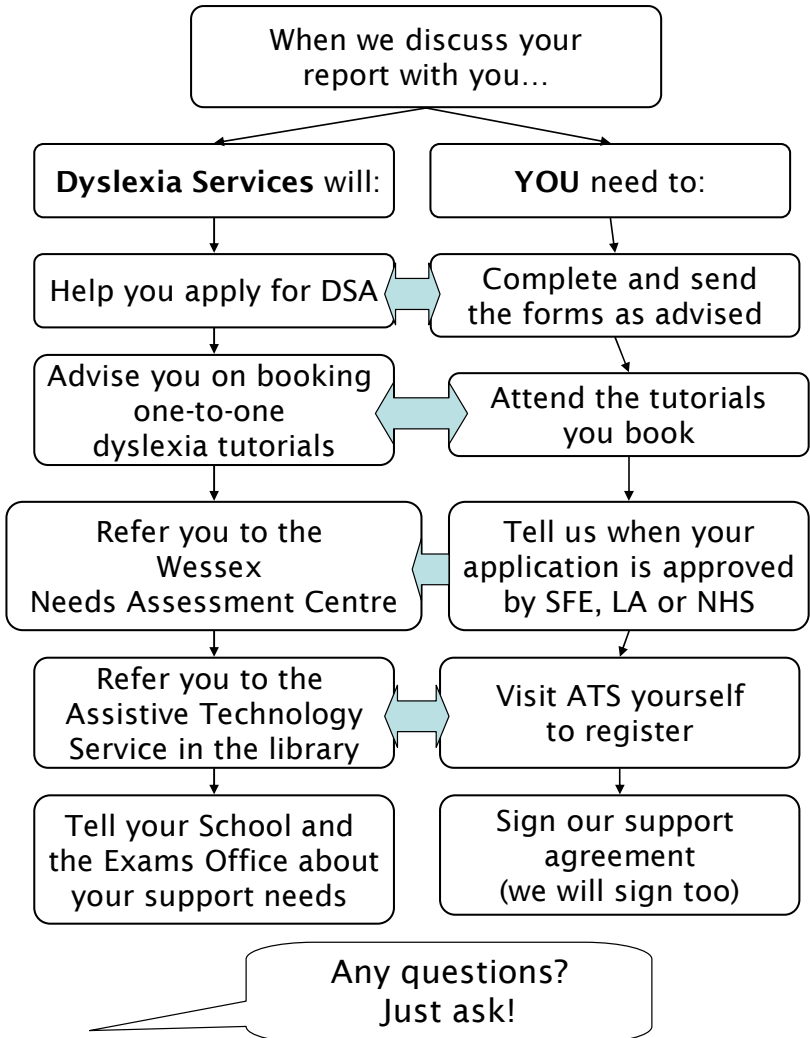
very helpful, addressed my needs and questions perfectly

It is good that you can bring in a paper copy or a thumb stick to look through your assignment on.

## Registering with Dyslexia Services



## After your assessment



## **What are special examination arrangements?**

### **Usually:**

- 25% extra time
- Separate room (with other students receiving extra time)
- Exam scripts marked with a coloured sticker to ensure that students are not penalised for typical dyslexic/dyspraxic spelling and syntax errors

### **Occasionally:**

- Reader of questions
- Scribe
- Use of computer

## **Overlay tests**

- Does reading make you tired?
- Do you dislike white, glossy or shiny pages?
- Do words seem to flicker or blur?
- Do you dislike reading under bright lights?
- Do you skip words or lines without meaning to and lose your place?

If you answer 'yes' to these questions, you might have visual stress. Sometimes, using a coloured acetate overlay will help with reading. Dyslexia Services can do a simple test to find the most appropriate colour. People can have visual stress with or without also having dyslexia or another specific learning difficulty.

## **What do we mean by ‘Assessment’?**

The word assessment has several meanings.

### **Full Assessment**

This is a diagnostic assessment by an educational psychologist or specialist assessor which provides full evidence of your specific learning difficulty. A full assessment takes about three hours. Short breaks will be offered. The assessor will explore different areas of your cognitive profile and current literacy skills to draw a diagnostic conclusion. The detailed written report and recommendations will be discussed with you.

### **Screening Assessment**

This is an initial indication of the possibility of dyslexia. It does not provide full evidence. It may be carried out in Dyslexia Services or you may have been screened at school or college.

### **Updated Assessment**

You may need this if you do not have a full diagnostic assessment report, or if it is out-of-date. Assessments using tests suitable for children, which were carried out before you were 16, will not be sufficient for higher education. Also, brief documents giving extra time in public exams will not offer full evidence.

### **Needs Assessment**

This is quite different from a diagnostic assessment. If you are awarded DSA, you will be asked to visit an Assessment Centre for a Needs Assessment. The assessor will make recommendations as to what support is appropriate to your needs. The University’s Assessment Centre is called the Wessex Assessment Centre. We will refer when appropriate.

## Disabled Students' Allowance (DSA)

The DSA is intended to cover certain **study-related** costs or expenses incurred by a student with any specific learning difficulty (or other disability). It is available to both new and existing students and is not means-tested. The DSA is administered by Student Finance England, NHS Bursaries, local authorities or research councils, depending on your course. We can advise you.

EU, international and very part-time students are **not** eligible for DSA.

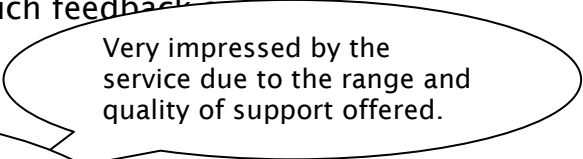
There are three types of allowance:

- **General allowance** for books, photocopying, printing etc.
- **Non-medical helper allowance** will pay for individual study skills tutorials (see pages 6-7).
- **Specialist equipment allowance** can pay for assistive software, a digital voice recorder or other items.

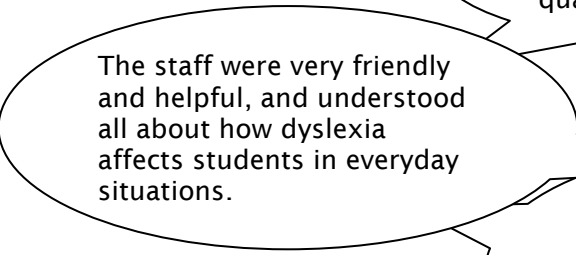
For more information on applying, see links on page 14 - 15 or talk to one of the dyslexia tutors.

## Feedback

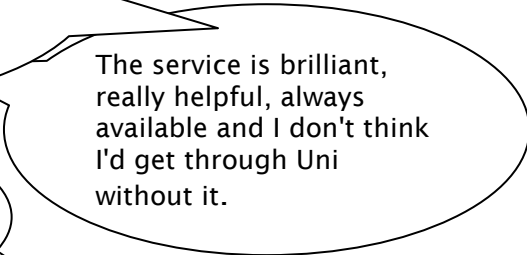
Feedback about the service is welcomed. There will be many opportunities to give feedback, both formal and informal. It would help us to develop the service in the way that you want if you can give us as much feedback.



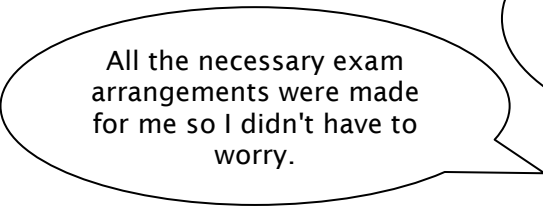
Very impressed by the service due to the range and quality of support offered.



The staff were very friendly and helpful, and understood all about how dyslexia affects students in everyday situations.



The service is brilliant, really helpful, always available and I don't think I'd get through Uni without it.



All the necessary exam arrangements were made for me so I didn't have to worry.

Comments from some current students.

## Complaints

If you have a complaint about the service, please discuss this with one of the dyslexia tutors. If this is not possible or if you are still unhappy, you are very welcome to raise your concerns with Janet Skinner, Head of Dyslexia Services, at an early stage. If the issue remains unresolved, you may contact

Dr. Kevin Partington, Head of Education Support.  
[K.J.Partington@soton.ac.uk](mailto:K.J.Partington@soton.ac.uk) extension 29022

## **Further Information**

### **University resources:**

#### **Dyslexia Services website**

[www.soton.ac.uk/edusupport/dyslexia](http://www.soton.ac.uk/edusupport/dyslexia)

Study skills handbooks available online.

#### **University of Southampton academic study skills**

[www.academic-skills.soton.ac.uk](http://www.academic-skills.soton.ac.uk)

Study skills toolkits at different levels.

#### **LexDis**

[www.lexdis.org](http://www.lexdis.org)

Technological strategies and solutions developed by students for students at Southampton.

#### **School of Humanities Academic Skills**

[www.hip.humanities.soton.ac.uk/Learning-Support/Academic-Skills/default.asp](http://www.hip.humanities.soton.ac.uk/Learning-Support/Academic-Skills/default.asp)

Guidance on a range of academic skills including essays.

#### **Assistive Technology Service (ATS)**

[www.ats.soton.ac.uk](http://www.ats.soton.ac.uk)

Email: [ats@soton.ac.uk](mailto:ats@soton.ac.uk)

Telephone 023 8059 7620 (internal 27620)

Now part of Dyslexia Services but based in the Library, ATS has specialised workstations set up with assistive software and can advise on using technology, and the library. It is open to all disabled students including those with dyslexia.

## **National and Local Organisations:**

### **British Dyslexia Association**

[www.bdadyslexia.org.uk](http://www.bdadyslexia.org.uk)

The BDA aims to help all people with dyslexia to realise their potential.

### **Dyspraxia Foundation**

[www.dyspraxiafoundation.org.uk](http://www.dyspraxiafoundation.org.uk)

Raising awareness and offering assistance to all people affected by dyspraxia.

### **Hampshire Dyslexia Association**

[help@hantsda.org.uk](mailto:help@hantsda.org.uk) or 023 8033 3345

Helpline and advice on assessment and tuition.

### **Dyslexia Action**

[www.dyslexiaaction.org.uk](http://www.dyslexiaaction.org.uk)

National organisation including private dyslexia assessment, tuition and workplace assessment

### **Information about DSA:**

**Student Finance website** (for downloadable DSA forms and guidance, such as **Bridging the Gap**)

[www.direct.gov.uk/en/EducationAndLearning/UniversitiesAndHigherEducation/StudentFinance/DG\\_171624](http://www.direct.gov.uk/en/EducationAndLearning/UniversitiesAndHigherEducation/StudentFinance/DG_171624)

**NHS Student Bursaries website** (for DSA forms for students in receipt of NHS bursaries).

<http://www.nhsbsa.nhs.uk/Students/1178.aspx>

**Wessex Needs Assessment Centre** (previously CELT)

Student Service Centre (George Thomas Building)

Tel: 023 8059 7233 Email:

[wessexdsa@soton.ac.uk](mailto:wessexdsa@soton.ac.uk)

## **Contacting Dyslexia Services**

### **For appointments at Winchester School of Art**

Contact Student Office

Telephone 023 8059 6913

Email: Allene Tuck ([at7@soton.ac.uk](mailto:at7@soton.ac.uk))

### **For appointments at Highfield**

Contact Trish Van Der Byl, Dyslexia Services secretary

Telephone 023 8059 2759

(24-hour answering service)

Email: [dyslexia@soton.ac.uk](mailto:dyslexia@soton.ac.uk)

### **For appointments at St Mary's Hospital, Portsmouth**

Contact Reception at the Education Centre.

Telephone: 023 9228 6000 ext 4637 or 4638

### **For appointments at North Hants Hospital, Basingstoke**

Telephone: 07876 277507

Email: Sue McKenna ([sm9@soton.ac.uk](mailto:sm9@soton.ac.uk))