



## Student Services Centre

A central point for all student enquiries; visit us online or in person. For information and advice about accommodation, finance, graduation, exams and much more.

Opening hours: 0900 – 1730 (Wednesdays 0900 – 1530)

Find us at the George Thomas Building (37), University Road, Highfield campus.

**Tel:** 023 8059 9599

**Email:** [ssc@soton.ac.uk](mailto:ssc@soton.ac.uk)

## Career Destinations

We can help you find work, volunteering opportunities and work experience. Take advantage of opportunities to develop your employability skills, professional career guidance and networking events to support your University Graduate Passport.

Opening hours: 0900 – 1730 (Wednesdays 0900 – 1530)

Find us at the George Thomas Building (37), University Road, Highfield campus.

**Tel:** 023 8059 3501

**Email:** [careers@soton.ac.uk](mailto:careers@soton.ac.uk)



## Student Resources Network

A gateway to all the help you'll need as a student at Southampton. Log into SUSSED and click on the Resources tab.

<https://sused.soton.ac.uk>

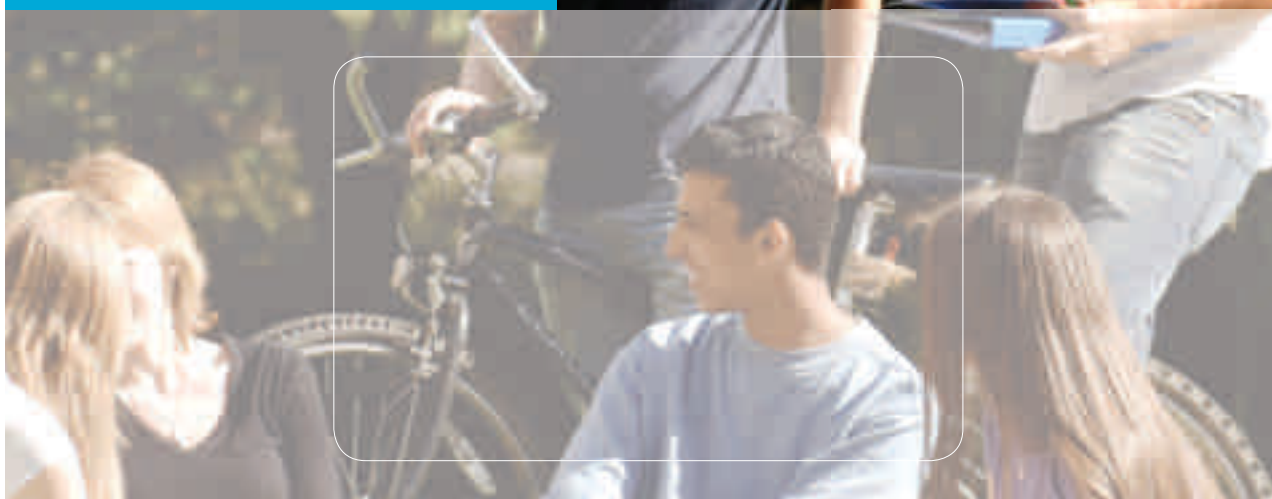


## Day Nursery

We provide a high standard of care and education to meet the individual needs of both children and parents, enabling children to reach their full potential in a secure and stimulating environment.

**Tel:** 023 8059 3465

**Email:** [nursery@soton.ac.uk](mailto:nursery@soton.ac.uk)



## Sport and Recreation

We offer a wide range of excellent indoor and outdoor facilities and promote sport at all levels from beginners through to elite athletes, providing a comprehensive programme of courses and classes including watersports, swimming and fitness.

**Tel:** 023 8059 2119

**Email:** [sportrec@soton.ac.uk](mailto:sportrec@soton.ac.uk)

## Dyslexia Services

We support dyslexic students and those who are dyspraxic or have other specific learning difficulties. We provide diagnostic assessments and academic study skills tuition.

**Tel:** 023 8059 2759

**Email:** [dyslexia@soton.ac.uk](mailto:dyslexia@soton.ac.uk)



## Enabling Services

Specialist support for students with a wide range of disabilities, health conditions, mental health difficulties and serious trauma from first enquiry through to graduation.

**Tel (Disability):** 023 8059 7726

**Email:** [enable@soton.ac.uk](mailto:enable@soton.ac.uk)

**Tel (Mentor):** 023 8059 7241

**Email:** [mentors@soton.ac.uk](mailto:mentors@soton.ac.uk)

## Needs Assessment Centre

We provide specialist assessment for students with disabilities and specific learning difficulties.

**Tel:** 023 8059 7233

**Email:** [wessexdsa@soton.ac.uk](mailto:wessexdsa@soton.ac.uk)

## Counselling Service

Our trained counsellors provide short term support for students and staff to help them balance study and work with emotional wellbeing.

**Tel:** 023 8059 3719

**Email:** [counser@soton.ac.uk](mailto:counser@soton.ac.uk)

## First Support

We provide practical support to students who are emotionally and psychologically affected by a significant incident or event. If you are ever concerned about your personal safety, or the safety of another student, you should contact the First Support Team. All contacts will remain in strict confidence.

**Tel (during office hours):** 023 8059 7488

**Tel (out of hours contact security control room):** 023 8059 3311

**Email:** [firstsupport@soton.ac.uk](mailto:firstsupport@soton.ac.uk)

Student Services is a team of individuals committed to providing student focussed services in partnership with others in and around the University.

Our aim is to be recognised as a world leader in the delivery of student centred services in the context of a Higher Education environment which values first class research, education and enterprise.

We make it our business to do best what matters most to our students to ensure their successful future.

Find out more about us at:  
[www.southampton.ac.uk/  
studentservices](http://www.southampton.ac.uk/studentservices)

[www.southampton.ac.uk/studentservices](http://www.southampton.ac.uk/studentservices)  
+44 (0)23 8059 9599

UNIVERSITY OF  
**Southampton**

Enriching student life  
Student Services