



COME CREATE AT WSA

**WINCHESTER
SCHOOL OF ART
OPEN DAY PROGRAMME**

WEDNESDAY 26 OCTOBER 2022

WELCOME TO WINCHESTER



Ranked 22nd

**in the UK for
Art & Design**

Complete University Guide, 2023

A warm welcome to Winchester School of Art (WSA), part of the University of Southampton. During your visit today, I hope you'll take the time to soak up as much as possible and make the most of chatting with the people you meet.

This is your chance to find out what it would be like to join us for the next part of your life's journey. Learn more about how we support and empower our students, speak with lecturers and peers, enjoy our spaces and allow yourself to imagine life at Southampton.

I really recommend finding time to attend our subject talks, which will give you the opportunity to discover more about studying your passions with us. Don't forget to spend a moment exploring the city of Winchester, too. This is an ideal time to explore your prospective new home.

Today will provide a glimpse of what your future could hold. Being a WSA student means being part of a community that will be there right alongside you as you grow, learn and realise your potential. I do hope you'll join us.

Kieron Broadhead,
Senior Executive Director,
Students and Infrastructure,
& Deputy Vice-President (Operations)

CONTENTS

- 02 WELCOME TO WINCHESTER
- 04 SCHEDULE OF EVENTS
- 06 THE STUDENT LIFE HUB
- 07 YOUR HOME AWAY FROM HOME
- 08 EXPLORE THE CAMPUS
- 10 WHAT DO OUR STUDENTS THINK?
- 12 YOUR PLANNER

With creative ambition at its core, WSA will support you with cutting-edge resources and facilities including:

- High-spec computer suites, two photography studios and an editing suite
- Specialist printing equipment: laser cutting, 3D printer and scanner, t-shirt printer, Mimaki fabric printer and more
- Industrial sewing machines, multi-thread overlockers and fusible and vacuum presses
- Dubied knitting machines and a computerised Shima Seiki knitting machine
- Jacquard loom, AVL dobby looms and a TC2 loom
- Screen-printing facilities and a dye-lab
- Sculpture workshops, a bronze foundry with ceramic kilns, metal and plastic fabrication shop, letterpress printing machines and etching presses
- On-campus Gallery and Library

Partnered with
**Women in Games,
UKIE, Raise The Game**

Member of the
**UK Fashion and Textile
Association (UKFT)**

College Council
Members of the
British Fashion Council

THE CITY OF WINCHESTER

Winchester is a vibrant city with diverse cultural life. Whether you want to spend your free time learning about the city's history or socialising with friends, Winchester has it covered.

Delve into the history and visit:

- Winchester Cathedral
- Wolvesey Castle (Old Bishop's Palace)
- Winchester City Museum

Discover places to eat such as:

- Josie's
- Turtle Bay
- Three Joes Pizza

Explore things to do including:

- St Catherine's Hill - a 30-minute walk from Winchester School of Art with picturesque views over the city
- Stroll through the riverside grounds at Abbey Gardens
- Experience live music, comedy and theatre at The Arc

DISTANCE FROM **WINCHESTER SCHOOL OF ART**
TO **SOUTHAMPTON AND LONDON**

SOUTHAMPTON

🚌 22 mins 🚶 17 mins

LONDON

🚆 60 mins 🚗 1 Hour 44 mins

DISTANCE FROM **HALLS OF RESIDENCE**
TO **WINCHESTER SCHOOL OF ART**

ERASMUS PARK

🚶 15 mins 🚌 5 mins 🚲 10 mins

SCHEDULE OF EVENTS

TALK	TIME	LOCATION
WELCOME TALK		
Welcome Talk	12:30-12:50	Lecture Theatre A
SUBJECT TALKS		
Fashion Design	13:00-13:45	Fashion Studio 4
Fashion Marketing with Management	14:30 - 15:15	West Side Lecture Theatre
Fine Art	13:00-13:45	Lecture Theatre A
Games Design and Art	13:00-13:45	West Side Lecture Theatre
Graphic Arts	14:30-15:15	Lecture Theatre A
Textile Design	14:30-15:15	Textile Studio



OTHER ACTIVITIES

The Student Life Hub Westside Gallery, 12:30 - 16:00

Head down to the Hub and find out more from our support teams about the services and opportunities available to you as a student.

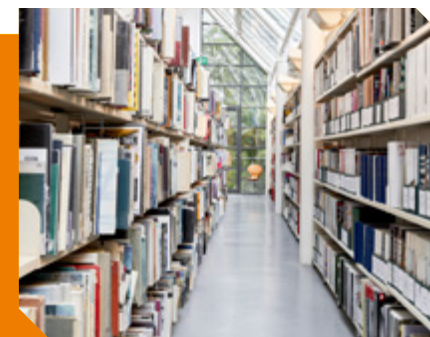
What Colour is Metal? Exhibition, 12:00-17:00

This ambitious exhibition will bring you on a journey of process, experimentation and mastery through the practice of 25 contemporary jewellers and silversmiths. It considers the relationship between metal and colour in contemporary silversmithing and jewellery practice, and a mapping of relationships and practice in key centres internationally.

Full of beautiful pieces, fascinating in their variety, skill, and creativity, **What Colour is Metal?** will be open to all until Saturday 3 December 2022.

Curated by Sara Roberts and Cólín O Dubhghaill

TOUR	TIME	LOCATION
CAMPUS TOUR		
Campus tours will be running throughout the afternoon (last tour departs 15:00).	12:30 - 16:00	Please meet in the WSA Café.
Our knowledgeable Student Ambassador Guides will tour you around campus, show you our facilities and answer any of your questions. You'll have the opportunity to see all the distinct areas for our undergraduate degree programmes.		
Tours take approximately 60 minutes.		
SELF-GUIDED ACCOMMODATION TOUR		
If you're considering moving to university, our accommodation tour is a great way to help you decide. The self-guided accommodation tour is for our Erasmus Park halls. You'll have the opportunity to view the common room, laundry room and an ensuite flat.	13:00 - 15:00	Erasmus Park Reception
If you have any questions, accommodation representatives are based at Erasmus Park and our accommodation stand in the Student Life Hub between 12:30 and 16:00.		
SELF-GUIDED CITY TOUR		
Explore the historical city of Winchester at your leisure.	All day	



THE STUDENT LIFE HUB

At the Student Life Hub, you can find out more from our support teams about the services and opportunities available to you as a student. This is a great opportunity to ask your questions and discover the different ways we look out for our community here at the University of Southampton.

You can expect to learn more about a range of topics and University teams, including:

- Accommodation
- Admissions
- Art and culture
- Wellbeing
- The Student Hub
- Student Inclusion
- Making your money work for you
- University libraries
- Academic Skills Hub
- Careers, Employability and Student Enterprise

SOUTHAMPTON UNIVERSITY STUDENTS' UNION (SUSU)

SUSU is here to represent the voice of students at every level and ultimately make your university experience unforgettable. Independent from the University, they are run by students, for students.

At WSA, The Students' Union has a dedicated help desk, at which you can get help and advice on topics ranging from housing and academic support to clubs and societies and general activities. The Student's Union runs several popular events at WSA, including Life Drawing, Quizzes, the WSA Summer Ball, WSA Careers Week, and much more. As a WSA student, you'll also benefit from discounts and offers from the Union at WSA.

All of our Southampton-based services and events are open to you too. There is a range of large-scale events and activities at Highfield Campus, including Freshers' events at the start of the academic year.

You can also join any of Southampton's 300+ student societies. This includes 50 societies in the creative industry, such as Wessex Scene magazine, Photographic Society, Games Society and Art Society. Learn to build upon your makeup and beauty skills in Glow – Makeup Society, or even practice pottery and create your own masterpieces in Potter Society. All our student societies are welcoming, inclusive and a great opportunity to make friends whilst practicing a skill.

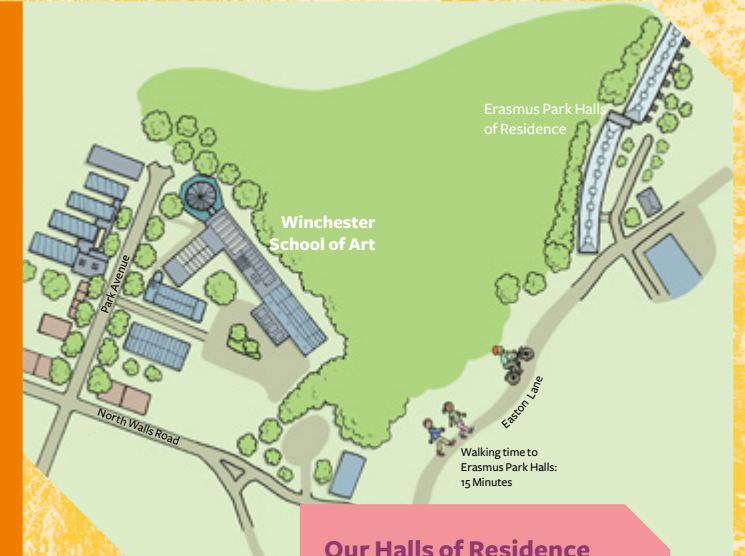


YOUR HOME AWAY FROM HOME

Our welcoming and safe accommodation provides excellent facilities with 24-hour support and advice available, and a fantastic environment for you to make new friends and experience student life.

You can also request a:

- Quieter flat
- No-alcohol flat
- Single-sex flat
- Postgraduate flat
- To live with your friends (international and second, third and fourth-year students only)



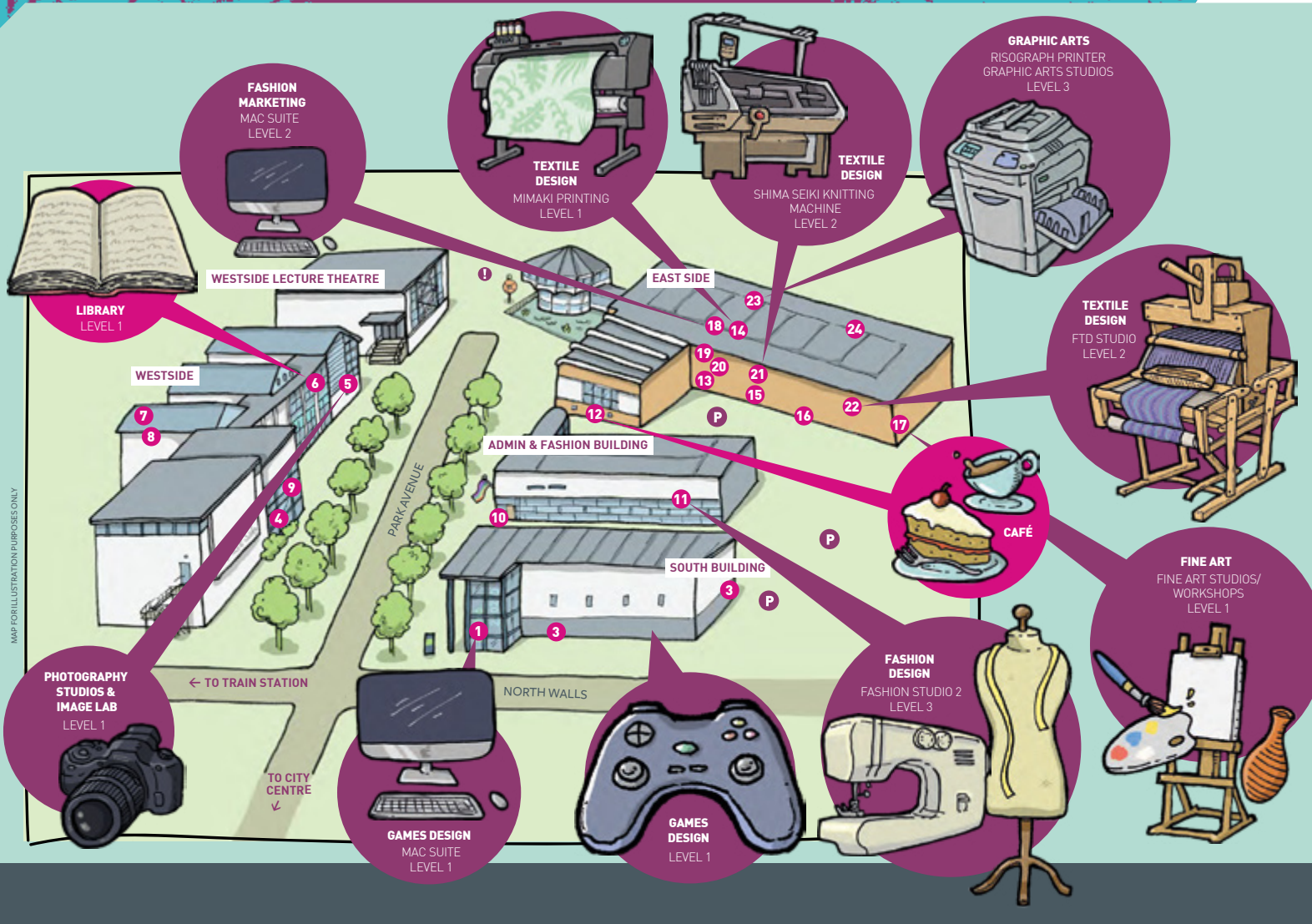
Our Halls of Residence include:

- Common Room
- Launderette
- Bicycle store
- High speed internet in all bedrooms and communal spaces
- Frequent, safe and good value travel options between Winchester and Southampton
- Cleaning of communal areas
- All utility charges (including contents insurance)



EXPLORE THE CAMPUS

Welcome to the Winchester School of Art Campus. This map is designed to assist a guided tour, and to demonstrate the services and facilities available to you.



SOUTH BUILDING

FIRST FLOOR

Mac Computer Suite **1**

MA Communication Design

Games Design Studios **2**

iLab

Games Design

Video Store **3**

THIRD FLOOR

Seminar Rooms 6, 7, 8, 9 & 10

WEST SIDE

FIRST FLOOR

Winchester Gallery **4**

Seminar Rooms 1161, 1163, 1165

MA Fine Art Studio

Media Stores

Mac Suite

Photography Studios & Image Lab **5**

SECOND FLOOR

Library **6**

FTD Studio **7**

Fine Art Studio **8**

Lecture Theatre A **9**

ADMIN & FASHION BUILDING

FIRST FLOOR

Main Reception **10**

Student Office

SECOND FLOOR

Student Support

Fashion Studio 1

Fashion Studio 3

THIRD FLOOR

Fashion Studio 2 **11**

EAST SIDE

FIRST FLOOR

Students Union/Café **12**

Quiet Room **13**

Computer Centre & Mimaki Printing **14**

Printmaking Workshop **15**

MA FTD Studios

T-Shirt Printer

Creative Services Centre **16**

PhD Study Room

Fine Art Studios/Workshops **17**

Fine Art Studios/Workshops **17**

SECOND FLOOR

Mac Suite **18**

Computer Centre 1

Assistive Technology

Lecture Theatre B **19**

Fashion Marketing **20**

FTD Workshops **21**

FTD Studio **22**

THIRD FLOOR

Graphic Arts Studios **23**

Seminar Rooms **24**

Harvard Lecture Space

MAP FOR ILLUSTRATION PURPOSES ONLY

Winchester School of Art
University of Southampton
Park Ave
Winchester
SO23 8DLT
023 8059 6900
www.southampton.ac.uk/wsa

Find out more:



I Assembly Point

P On-site parking is for permit holders. Some visitor parking may be arranged on an ad-hoc basis

WHAT DO OUR STUDENTS THINK?



“I really enjoy being able to explore my ideas and develop my creative process! I love telling stories and creating characters so with this course, I have really been able to better my abilities and create interesting games as a result! It’s really helping me prepare for the industry world.”

Lio Allen
BA Games Design and Art, 2022

“I chose to study at WSA because of the fantastic facilities, huge studio spaces, plenty of tutor contact time and a brilliant library for research. The facilities top everything for me! WSA is particularly focused on hand rendered skills, such as screen printing, which gives you a great band of knowledge to move into digital design.”

Emily Erskine
BA Textile Design (Printed Textiles Pathway), 2021



“I love that my course encourages me to become a better graphic artist throughout each of the modules. The technical workshops, guest lectures, and design briefs have all facilitated my growth as a young graphic designer as well as being surrounded by a vibrant creative community.”

Rahul Sonagra
BA Graphic Arts, 2022

“At WSA there’s a close-knit community with peers and staff members – everyone’s always happy to help. Winchester has a lovely Christmas market and Cafes, with so many nice places to have a break. It’s also very close to London, which is amazing for research!”

Eva Smith
BA Fashion Marketing with Management with Year in Employment, 2022



YOUR PLANNER

Use this Planner to build your day around the events that interest you, to help you get the most out of your day.

Time	Event	Notes
12:00		
13:00		
14:00		
15:00		
16:00		



My tutors hard work and constant support is my favourite attribute studying at Winchester. They always try to expand my creativity to its full potential by giving me constructive criticism, setting up fun and exciting workshops, and are always open to listen to my ideas.”

Aleksandra Dyka
BA Fashion Design, third year



Find out more:

UK and EU enquiries:
enquiry@southampton.ac.uk
+44 (0)23 8059 9699

EU and International enquiries:
international@southampton.ac.uk
+44 (0)23 8059 9699



 **Find out more:**

