

Annual Researching Medical Education Conference 2013

A day of workshops and seminars organised by ASME

Featuring keynote presentations from:



Dr Stephen Billett, 

Griffith University, Queensland, Australia

Dr Stephen Billett is Professor of Adult and Vocational Education in the School of Education and Professional Studies. Since 1992, he has researched learning through and for work, and has published widely in the fields of vocational learning, workplace learning and conceptual accounts of learning for vocational purposes. He is on the editorial boards of seven refereed journals, including the American Education Research Journal, and he reviews articles for many other journals. He is also the Founding and Editor in Chief of Vocations and Learning: Studies in professional and vocational education (Springer).



Professor Stephen Gorard, 

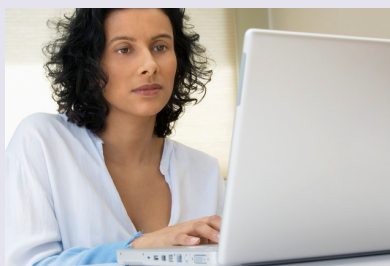
The University of Durham, UK

Stephen Gorard is Professor of Education and Well-being, and Fellow of the Wolfson Research Institute at Durham University, and Honorary Professorial Fellow at the University of Birmingham. He has previously held chairs in social science and education at Cardiff and York. He is a Methods Expert for the US government Institute of Education Science, member of the ESRC Grants awarding Panel, and Academician of the Academy of Social Sciences.

Researching Medical Education is a one-day conference for anyone interested in the methodological and theoretical aspects of medical or clinical education research. It is run by the Association for the Study of Medical Education (ASME) and the Researching Learning for Clinical Practice (RLCP), Institute of Education, University of London. The day includes parallel sessions with keynote speaker discussion groups; research method workshops for new and more experienced researchers; theory seminars and doctoral work in progress. Further information will be available on our website www.asme.org.uk

Wednesday
20 November 2013
9am – 5pm

RIBA
66 Portland Place
London, W1B 1AD



If you would like information about student travel funds available from the HEA please go to the link below:
<http://www.heacademy.ac.uk/travel-fund>



Leading education and social research
Institute of Education
University of London