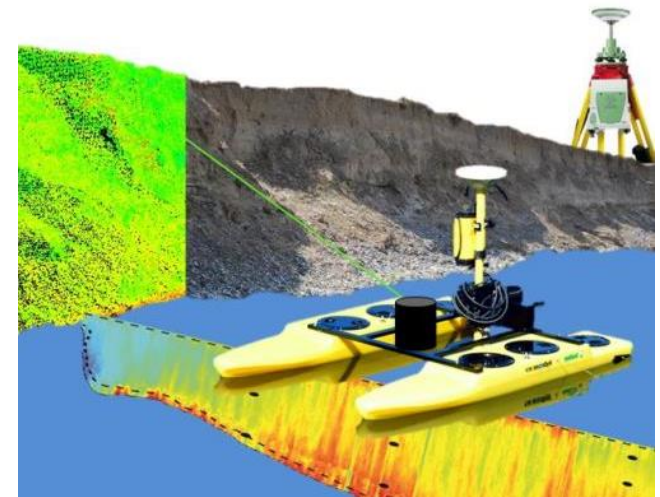
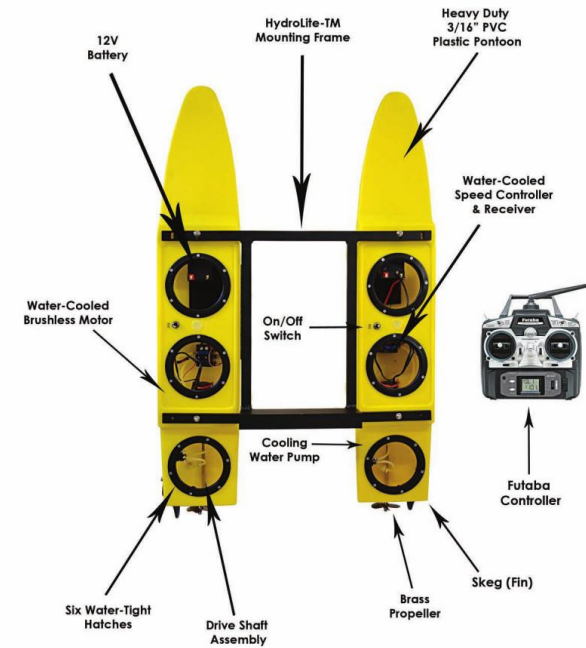
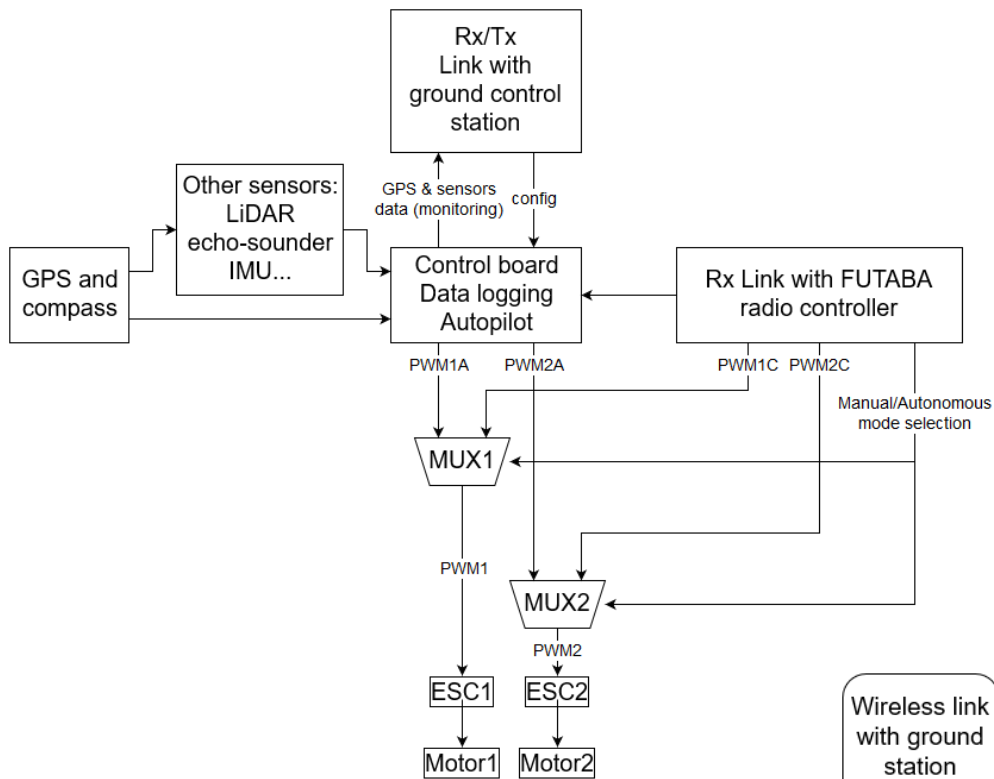


Small Unmanned Surface Vessel For Shallow Water Survey

- Polytech Nantes graduate school of engineering (France) 4th year student
- Electronics and embedded systems background
- 3 months internship started on May 23rd
- Adding an autonomous mode to a RC survey boat platform
- To be used by Dr. Leyland from geography for topographic (LiDAR) and flow (ADCP) data collection
- Project under the supervision of Dr. Downes





- A C++ app
- Yocto Linux kernel
- Intel Eclipse based IDE and tools

