

Autonomous Environmental Sensor Networks

Kirk Martinez

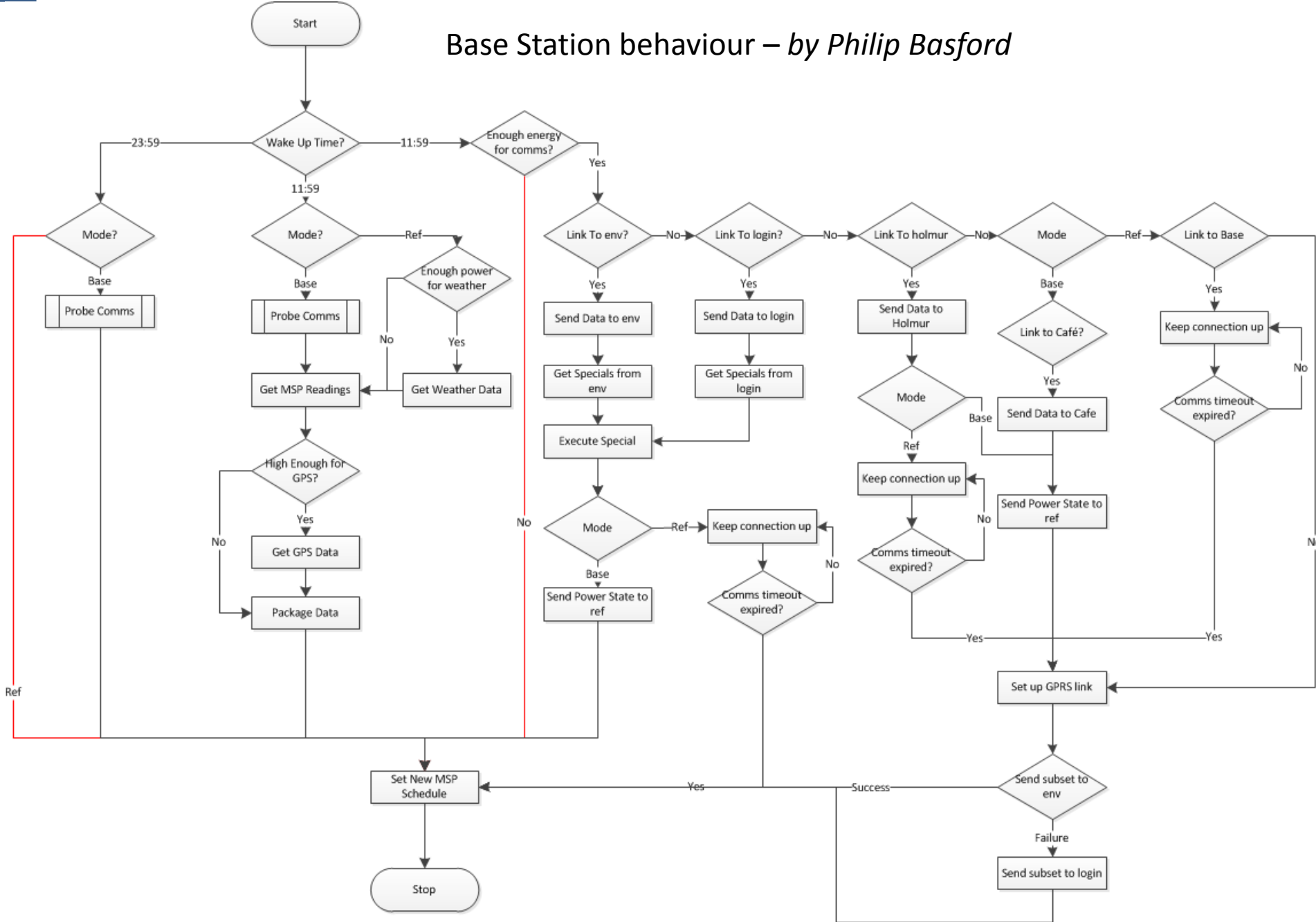
Electronics and Computer Science

Autonomy

- Systems:
 - Do tasks on their own
 - Adapt to conditions and problems
 - Appear “smart”
 - May use the Web



Base Station behaviour – by Philip Basford



This path should never occur

Internet of Things Sensing

Autonomous systems need to:

- be understandable by users
- easy to interact with
- try to fix their problems
- Get their task done!

