



Find out more:

www.southampton.ac.uk/visit

UK and EU enquiries:

visit@southampton.ac.uk

+44 (0)23 8059 9699

International enquiries:

international@southampton.ac.uk

+44 (0)23 8059 9699



DISCLAIMER

This document is for information purposes only and is prepared well in advance of publication. While the University of Southampton uses all reasonable efforts to ensure that all statements, information and data contained in this document are accurate as at the date of publication, it reserves the right to make revisions or modifications to such statements, information or data at any time and accepts no responsibility for the consequences of any such revisions or modifications.

© University of Southampton 2018

This document can be made available, on request, in alternative formats such as electronic, large print, Braille or audio tape, and in some cases, other languages.



CarbonNeutral.com



When finished with this document please recycle it.

UNIVERSITY OF
Southampton

EXPLORE YOUR NEW WORLD

OPEN DAY PROGRAMME
OCTOBER 2018

PART OF THE
RUSSELL
GROUP

STUDENT
AMBASSADOR
Happy to help

CONTENTS

- 04 Plan your day
- 05 Explore and enjoy
- 06 Campus developments
- 07 Open Day shuttle buses
- 08 Information Fair
- 10 General events
- 12 Subject events
- 22 Explore the city
- 23 Students' Union
- 24 Accommodation
- 26 Highfield Campus map
- 28 Campus maps
- 30 Catering facilities
- 31 Your planner



Top 20

in the UK*



Top 100

globally**



**Silver
award**

for teaching
excellence***



Download the app

Search 'MySouthampton'
in your app store



Follow us on social media

Search #UoSOpenDay

* Complete University Guide, 2019

** QS World University Rankings, 2019

*** Teaching Excellence and Student Outcomes Framework (TEF) rating, 2019



I am delighted to welcome you to the University of Southampton Open Day.

Your university experience is about more than your course, it's about the next chapter of your life. At Southampton, you can grow academically and personally, meet like-minded people and work towards achieving your dreams.

Our job is to help you do this.

We are an institution ranked among the top 100 global universities** and a founding member of the prestigious Russell Group of research-intensive UK universities. But we offer more than a taught education – we will support you in your studies, help you achieve a good work/life balance and prepare you for life after university.

Our Open Days aim to give you a glimpse of what your life at Southampton could be like. Our world-leading academics will inspire you with their enthusiasm and our students will show you round the beautiful green campuses where you can sample some of the student societies and sports clubs on offer.

I hope you choose Southampton as your home away from home. Choose a university that shares your passion for learning and discovery; a place you can grow and develop the skills you need to achieve your goals.

Professor Sir Christopher Snowden
President and Vice-Chancellor

Southampton has one of the biggest Students' Unions in the country, with over 340 societies and sports clubs. Our students run our award-winning media channels (covering radio, TV and magazines) and we are one of the only unions in the country to have our own cinema, showing all the latest films.

The Students' Union is here to represent you at every level – from the course reps who represent you within your faculties, to people like me and the other sabbatical officers who are elected to represent you full time.

We also run a dedicated Advice Centre, which gives you independent, impartial advice when you need it.

Make sure you pop in and see us today – you'll spot us walking around campus, so say hello and ask us about student life and what the Union can offer you as a student!

Emily Dawes
Union President

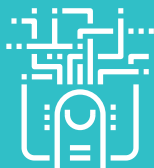


PLAN YOUR DAY

At our Open Days, we aim to give you a glimpse of what your life at Southampton could be like. The Open Day is the first step on your university journey; use our top tips to help you get the most from your day.

Download the app

Create your schedule for the day using our free Open Day app. Search 'MySouthampton' in your app store.



Visit our Information Fair

Between 09:00 and 16:00 you can speak to representatives from subject areas, clubs and societies, and the services that will support you as a Southampton student. To find out more, see page 8.



Check in

When you have a chance, head to one of our check-in points and get your ticket scanned. This lets us know you've attended the Open Day. There are check-in points on Highfield Campus, Boldrewood Innovation Campus, Avenue Campus and at the National Oceanography Centre Southampton.

See the city

Make the most of your day by visiting Southampton city centre on one of our regular shuttle buses. You can take a tour of the city, enjoy something to eat and drink or even see a show at the Mayflower Theatre. Or, if you don't have time to visit, view our 360 degree virtual city experience room in the Information Fair.

Take a break

There are many places to grab something to eat or drink on each of our campuses, with special deals for our Open Day visitors.



Attend a subject talk

Subject talks run throughout the day. They provide information about what it's like to study here at Southampton and what modules you can take. You will also have the opportunity to ask questions about your chosen area of study (see pages 12–20 for talk times).



Take a tour

A guided campus tour is the best way to see the facilities on Highfield Campus. Tours are led by our student ambassadors, who will give real insight into life at Southampton (see page 11).



Follow us on social media

Search #UoSOpenDay to stay up-to-date with what's happening on the day.

Please note that filming and photography will be taking place at the Open Days for use in University publications and on the University website. If you do not wish to be included, please let the film crew or photographer know.

EXPLORE AND ENJOY

Enjoy a lunchtime concert performed by our talented music students.

The Open Day is your chance to get a real feel for the University and imagine yourself living and learning here. So explore the campuses, enjoy the many green spaces and social areas; soak up the atmosphere. And here are a few highlights to look out for while you're here.



Lunchtime concerts

Join us at lunchtime for a concert by our Southampton Showcase performers. Showcase is a platform providing exposure to the talented pre-professional student performers within our Music department. Our lunchtime concert will feature an eclectic mix of performances for you to enjoy. Stay for the whole concert or just drop in for a while – and don't forget to bring your lunch! For concert times see page 11.

Cafés and restaurants

Take a break and enjoy a coffee or lunch at one of our many restaurants and cafés located across our campuses.

Sports talks

If sport is your thing, head over to building 34 for one of our talks about the excellent sporting facilities available here at Southampton. We cater for all levels – so whether you're a sporting professional or just enjoy an occasional keep fit class, there will be something for you.

360 degree experience of the city

Don't have time to head to the city on the Open Day? Experience the city of Southampton by visiting our 360 degree virtual experience room, located within the City Life Zone of the Information Fair.

Filmed across 12 locations, with a sound track created by our music students, this will give you a feel for what our vibrant city has to offer.

Virtual Open Day

Remember, if you don't have chance to see everything during the Open Day, you can explore all our campuses at your leisure with our Virtual Open Day.

www.southampton.ac.uk/virtualopenday



01

Artist's Impression



Artist's impression

02

03



04

CAMPUS DEVELOPMENTS

The University is committed to investing in high-quality facilities for our students.

Construction of our new teaching and learning building on Highfield Campus, due to open in 2019, is well underway. The new building will feature a 250-seat lecture theatre, a range of adaptable group teaching spaces, a computer suite, a café and a variety of study areas.

Also opening in 2019 is our National Infrastructure Laboratory on our Boldrewood Innovation Campus. This purpose-built facility will house state-of-the-art research laboratories to develop our understanding of transport infrastructure. It is supported by £36m of government investment as part of a national partnership.

This spring saw staff move into our new Centre for Cancer Immunology at University Hospital Southampton. Fully funded by philanthropy, this specialist facility is the first dedicated centre of its kind in the UK.

Our latest residential building, Chamberlain Hall, opened in 2016 at our Glen Eyre complex. This hall of residence represents a £36m investment by the University and offers 365 en suite bedrooms with shared kitchens, common rooms and a range of study spaces.

- 01 National Infrastructure Laboratory
- 02 Centre for Teaching and Learning
- 03 Chamberlain Hall
- 04 Centre for Cancer Immunology



Find out more:

[www.southampton.ac.uk/
building-projects](http://www.southampton.ac.uk/building-projects)

OPEN DAY SHUTTLE BUSES

During the Open Day you can enjoy unlimited travel between our Southampton campuses on our free shuttle bus service.

Show your Open Day ticket, programme, or the app for free travel on our shuttle buses and unilink services.

You can get on one of our buses at Westquay and, depending on the course you're interested in, go straight to Highfield Campus, Avenue Campus, Boldrewood Innovation Campus or the National Oceanography Centre Southampton.

If the talks and events you're interested in attending are at one of our other campuses, there's no need to go to Highfield Campus first; you can build your day around your interests and

visit the campuses in the most convenient order for you.

Our award-winning unilink bus service connects our Southampton campuses with the city's major transport links. Our student ambassadors will be happy to provide you with directions onto the correct bus.

Please allow plenty of time for transfers between the campuses, halls of residence and from Westquay, and local public transport terminals.

Keep checking our website for the latest travel information.

APPROXIMATE TRANSFER TIMES

WESTQUAY TO:

| | |
|------------------------------|-------------------|
| Avenue Campus | 20 minutes |
| Boldrewood Innovation Campus | 25 minutes |
| Highfield Campus | 35 minutes |
| National Oceanography Centre | 15 minutes |

SOUTHAMPTON CENTRAL TRAIN STATION TO:

| | |
|------------------------------|-------------------|
| Avenue Campus | 15 minutes |
| Boldrewood Innovation Campus | 20 minutes |
| Highfield Campus | 25 minutes |
| National Oceanography Centre | 20 minutes |

HIGHFIELD CAMPUS TO:

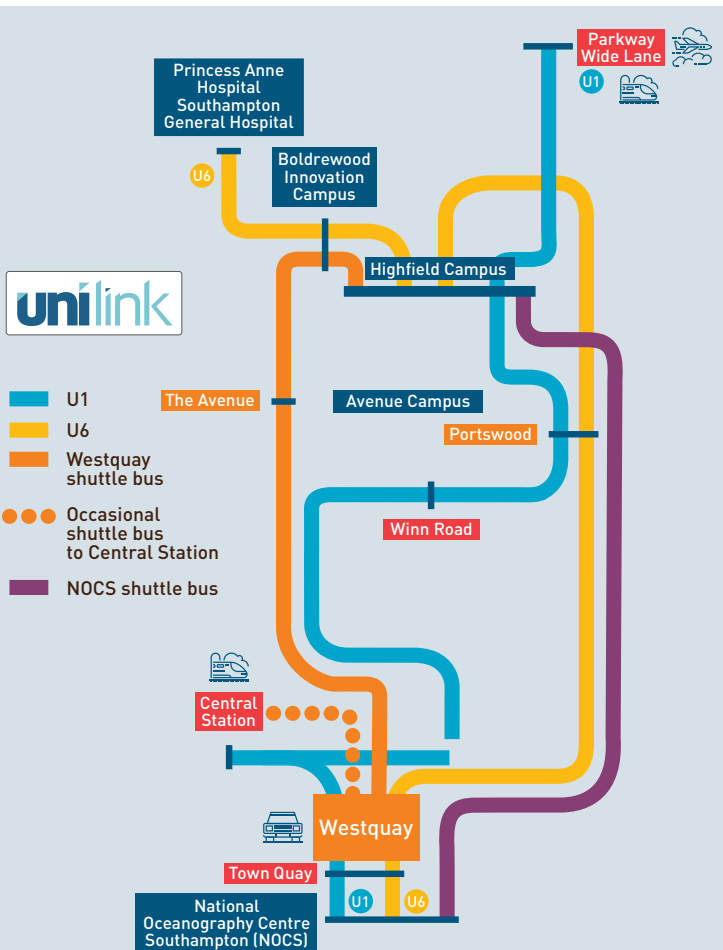
| | |
|------------------------------|-------------------|
| Avenue Campus | 10 minutes |
| Boldrewood Innovation Campus | 5 minutes |
| National Oceanography Centre | 45 minutes |

AIRPORT/PARKWAY TRAIN STATION TO:

| | |
|------------------------------|---|
| Avenue Campus | 40 minutes <i>(One change at Highfield Campus)</i> |
| Boldrewood Innovation Campus | 35 minutes <i>(One change at Highfield Campus)</i> |
| Highfield Campus | 20 minutes |
| National Oceanography Centre | 1 hour 10 minutes <i>(One change at Highfield Campus)</i> |

Accessible routes

There will be a limited number of wheelchairs available at the information point at the interchange, on Highfield Campus (next to Building 6) – please enquire here. Wheelchair routes and disabled toilets are indicated on our campus maps (pages 26–29).



INFORMATION FAIR



The Information Fair is at the heart of your Open Day. Here you will find representatives from subject areas, support services, the city and some of our clubs and societies. Make sure you allow time to head over, check in and get all of your questions answered.

The Information Fair takes place in Building 18 (Jubilee Sports Centre) on the Highfield Campus, and will be open between 09:00 and 16:00.

SUBJECT ZONE

Within this zone you will be able to find out about your subject of interest. You will get the chance to speak to current students or members of staff.

STUDENT SUPPORT ZONE

Here you can speak to representatives from the services that will support you from application to graduation. Get help with your application, receive

funding advice and find out where your Southampton degree could take you.

If you have any specific requirements and think you might need support during your studies, visit the Enabling Services stand where the team will be happy to answer any questions you have.

CLUBS AND SOCIETIES ZONE

This zone allows you the opportunity to get a feel for what student clubs and societies are available to you when you study here at the University of Southampton. Whether it is competing in a sport you love,

broadening your experience with volunteer work or getting involved in a society, no matter what you're interested in there's something for you.

CITY LIFE AND ACCOMMODATION ZONE

Speak to our Accommodation team to find out where you could be living as a Southampton student. You can also find out more about what the city of Southampton has to offer with our 360 degree virtual experience room.



STAND NUMBER

- | | | |
|---|---|--|
| 1 Biology, Ecology and Zoology | 13 Health Sciences, Allied Health Professions including Physiotherapy, Podiatry, Occupational Therapy, and Nursing and Midwifery | 25 Business School |
| 2 Biochemistry, Biomedical Sciences, Pharmacology, Neuroscience | 14 Mathematical Sciences | 26 Law School |
| 3 Geology and Geophysics | 15 Geography, Population and Geography | 27 Medicine |
| 4 Oceanography and Marine Biology | 16 Economics | 28 Admissions |
| 5 Natural Sciences | 17 Politics and International Relations, Quantitative Social Science | 29 Careers and employability |
| 6 Chemistry | 18 Anthropology, Sociology, Social Policy and Criminology | 30 Studying abroad |
| 7 Environmental Science | 19 Psychology | 31 Year in Industry |
| 8 Engineering/Physics/Maths/Geophysics Foundation Year | 20 Education | 32 Southampton Language Opportunity |
| 9 Engineering including Acoustical Engineering, Aeronautics and Astronautics, Civil Engineering, Mechanical Engineering and Ship Science | 21 Audiology | 33 University IT Services |
| 10 Computer Science | 22 Ancient History, Archaeology, History, Philosophy | 34 Hampshire Constabulary |
| 11 Electronic and Electrical Engineering | 23 English, Film, Modern Languages and Linguistics, Music | 35 Student Services Centre |
| 12 Physics and Astronomy | 24 Winchester School of Art | 36 Student Life |
| | | 37 Enabling Services |
| | | 38 Library |
| | | 39 Arts at University of Southampton |
| | | 40 Committed to sustainability |
| | | 41 Faith and Reflection Centre |
| | | 42 Accommodation |
| | | 43 City experience (360 degree virtual experience room) |

GENERAL EVENTS



| TALKS | TIMES | DURATION | LOCATION* |
|--|---|------------|---|
| Welcome to the University of Southampton: Your chance to hear from our President and Vice President about what makes Southampton a special place to live and study | 09:30 | 30 minutes | Building 52 (Turner Sims) |
| | 10:45 13:00 | 30 minutes | Building 42 (the Students' Union), Level 3, cinema |
| Accommodation | 12:15 13:45 15:15 | 30 minutes | Building 42 (the Students' Union), Level 3, cinema |
| | 10:30 11:30 12:45 14:15 | 30 minutes | Glen Eyre Halls of Residence, Glen Eyre Road, Dining Hall |
| Extended Project Qualification talk: Preparation for university study | 11:00 14:00 | 45 minutes | Building 34, Lecture Theatre 3001 |
| Fees and finance | 10:00 12:00 13:00 14:00 | 45 minutes | Building 40, Garden Court |
| Sport at Southampton | 09:30 13:15 | 30 minutes | Building 34, Lecture Theatre 3001 |
| Studying abroad information session | 10:00 13:30 15:15 | 45 minutes | Building 6 (Nuffield), Lecture Theatre A |
| Student life with the Students' Union: The Union's elected student officers will welcome you to campus with an essential guide to student life. Expect to hear an overview of everything the Union offers, with information about halls, support services, nightlife and much more | 10:00 11:30 14:30 | 30 minutes | Building 42 (the Students' Union), Level 3, cinema |
| Personal statement: top tips | 09:15 10:00 11:00 12:00 13:00 14:00 15:00 | 30 minutes | Building 35, Lecture Theatre 1001 |
| Enterprise, internships, placements and volunteering: how the Careers Service can support your employability | 10:00 11:00 13:00 | 30 minutes | Building 6, Room 1083 |

*Location is on Highfield Campus unless otherwise specified

| DROP IN | TIMES | LOCATION* |
|---|-------------|---------------------------------------|
| Faith and Reflection Centre: Find out what support and activities we offer throughout the academic year. Come and enjoy our hospitality or just take a break in a quiet space | 10:00–16:00 | Faith and Reflection Centre, House 41 |
| Southampton Showcase: our concert is open to all. Please feel free to bring lunch and to arrive or leave between acts | 12:30–13:10 | Building 52 (Turner Sims) |
| The Students' Union: drop in for a chance to discover the opportunities the Students' Union has to offer, including information about sports clubs, societies, advice, socialising and representation. This is your chance to ask current students and elected officers anything you are unsure about, while discovering the facilities with a Union tour | 09:00–16:00 | Building 42 (the Students' Union) |

| TOUR | DESCRIPTION | TIMES | LOCATION* |
|-----------------------|--|-------------|--|
| Highfield Campus | Led by a current student, see the sights and amenities of our main campus, and get an insight into what your life would be like as a student at Southampton. These tours take around 30 minutes and are on foot | 10:00–16:00 | Marquee on the grass outside Building 38 |
| Hartley Library | Our libraries will be an important part of your time here as a student. Explore our main University Library and see our study spaces and print resources. An opportunity to talk to Library staff and ask questions about resources and services, and how the Library can support you in your studies. Take a self-guided walk around all five floors and see inside this amazing building | 09:00–16:00 | Building 12 (the Hartley Library) |
| Jubilee Sports Centre | Take a look around our onsite sports centre which houses a 25-metre swimming pool and a 170 station fitness suite. These tours are self-guided; follow the footsteps outside the Information Fair | 09:00–16:00 | Building 18 (Jubilee Sports Centre) |
| Students' Union | Led by the Students' Union team, discover how the University of Southampton Students' Union can enrich your student experience. Check out the cinema, sports facilities, media studios, sports bar, lettings agency and more | 09:00–16:00 | Building 42 (the Students' Union) |
| Glen Eyre Halls | Take a self-guided stroll around our largest accommodation site, and see examples of self-catered non-en suite and en suite rooms you might like to live in as a student. Staff and student helpers will be available onsite if you would like to find out more about the student accommodation experience. Follow the yellow signage from the top of University Road. Please note that the walk to Glen Eyre takes around 15 minutes | 10:00–16:30 | Glen Eyre Halls of Residence, Glen Eyre Road |
| Mayflower Halls | Take a self-guided tour around our larger inner city halls site, located in the heart of Southampton's Cultural Quarter. View examples of modern self-catered en suite accommodation that could be your new home as a student. Staff and student helpers will be available onsite so you can find out more about the student accommodation experience. Catch a free bus from the interchange at Highfield Campus to Southampton Central train station, and follow the yellow signage to Mayflower Halls. Please allow around 30 minutes' travel time | 12:00–17:00 | Mayflower Halls of Residence, West Park Road |

SUBJECT EVENTS

| DETAILS | TIME | DURATION | LOCATION* |
|---|---|-------------------------|--|
| ACCOUNTING AND FINANCE | | | |
| Subject talk | 10:30 12:30 14:30 | 40 minutes | Building 2, Level 3, Room 3043 |
| Explore how the Bloomberg Terminal brings together real-time industry market data, breaking news and powerful analytics | 09:30–16:30 | 30 minutes | Building 58 (Murray), Level 1, Room 1053, Bloomberg Trading Suite |
| ACOUSTICAL ENGINEERING | | | |
| Subject talk | 11:00 13:15 | 45 minutes | Building 19, Level 3, Room 3011 |
| Talk: Which engineering subject should I study? Find out about our engineering subjects and choose the right one for you | 10:00 11:00 12:00 13:00 | 30 minutes | Building 5 (Eustice), Level 2 |
| Drop in and guided tour | 10:00–16:00 | 45 minute tour (approx) | Building 19, Level 3, Room 3011 |
| <i>Actuarial Science: For Mathematics with Actuarial Science see Mathematics. For Economics and Actuarial Science see Economics</i> | | | |
| AERONAUTICS AND ASTRONAUTICS | | | |
| Subject talk | 10:45 12:45 14:45 | 45 minutes | Building 7 (Lanchester), Level 3, Lecture Theatre A |
| Talk: Which engineering subject should I study? Find out about our engineering subjects and choose the right one for you | 10:00 11:00 12:00 13:00 | 30 minutes | Building 5 (Eustice), Level 2 |
| Drop in | 10:00–16:00 | | Boldrewood Innovation Campus, Building 177, Level 3 |
| Visit engineering facilities at Highfield Campus | 10:00–16:00 | | Details (including map) available from Building 18 Information Fair, Building 7 and Boldrewood Innovation Campus Information Point |
| Visit engineering facilities at Boldrewood Innovation Campus | 10:00–16:00 | | Details (including map) available from Building 18 Information Fair, Building 7 and Boldrewood Innovation Campus Information Point |
| <i>Aerospace Electronic Engineering: See Electrical and Electronic Engineering</i> | | | |
| ANCIENT HISTORY | | | |
| Subject talk | 13:15 | 45 minutes | Avenue Campus, Building 65, Lecture Theatre C |
| Tour of Avenue Campus | 10:00–15:45 (departing every 15 minutes) | 20 minutes | Avenue Campus, Building 65, South Corridor |
| Drop in | 10:00–16:00 | | Avenue Campus, Building 65, Room 1173 |
| Study abroad opportunities | 10:00–16:00 | | Avenue Campus, Building 65, North Corridor |
| ANTHROPOLOGY | | | |
| Subject talk | 10:00 | 50 minutes | Building 58 (Murray), Murray Lecture Theatre |

*Location is on Highfield Campus unless otherwise specified

| DETAILS | TIME | DURATION | LOCATION* |
|--|---|--|--|
| ARCHAEOLOGY | | | |
| Subject talk and tour | 11:15 14:15 | 75 minutes (45 minute talk, 30 minute tour) | Avenue Campus, Building 65, Lecture Theatre C |
| Tour of Avenue Campus | 10:00–15:45 (departing every 15 minutes) | 20 minutes | Avenue Campus, Building 65, South Corridor |
| Drop in | 10:00–16:00 | | Avenue Campus, Building 65, Room 1177 |
| Study abroad opportunities | 10:00–16:00 | | Avenue Campus, Building 65, North Corridor |
| Demonstration | 10:00–16:00 | | Avenue Campus, Building 65, lawn |
| <i>Biochemistry: See Biological sciences</i> | | | |
| <i>Biology: See Biological sciences</i> | | | |
| AUDIOLOGY | | | |
| Subject talk | 10:30 | 45 minutes | Building 13, Level 3, Room 3021 |
| Guided tour and demonstrations | 11:30 | 60 minutes | Building 13, Level 4, Room 4045 |
| Drop in | 11:00–13:30 | | Building 13, Level 4, Room 4045 |
| BIOLOGICAL SCIENCES | | | |
| <i>(includes Biology, Biochemistry, Biomedical Sciences, Ecology and Conservation, Neuroscience, Pharmacology and Zoology)</i> | | | |
| Subject talk | 11:15 13:45 | 50 minutes | Building 32, Level 1, Lecture Theatre |
| Drop in | 10:00–16:00 | | Building 85, Room 2207 |
| Biological Sciences lab demonstrations | 10:00–11:10 12:00–13:30 14:20–16:00 | | Building 85, Room 1021 |
| <i>Biomedical Electronic Engineering: See Electrical and Electronic Engineering</i> | | | |
| <i>Biomedical Sciences: See Biological sciences</i> | | | |
| BUSINESS | | | |
| <i>(includes Business Management, Business Analytics and Business Entrepreneurship)</i> | | | |
| Subject talk | 10:30 12:30 14:30 | 40 minutes | Building 2A, Lecture Theatre H |
| Explore how the Bloomberg Terminal brings together real-time industry market data, breaking news and powerful analytics | 09:30–16:30 | 30 minutes | Building 58 (Murray), Level 1, Room 1053, Bloomberg Trading Suite |
| CHEMISTRY | | | |
| Subject talk | 10:30 11:00 11:30 12:00 13:00 14:00 | 30 minutes | Check in at Building 30, Reception area for Lecture Theatre 1 (27/2001) or Lecture Theatre 2 (27/2003) |
| Department tour | 10:00–15:00 | 30 minutes | Leaves from Chemistry Common Room (Building 29/2067) every 15 minutes |
| Drop in | 09:45–16:00 | | Chemistry staff and students (Common Room 29/2067) |

■ ARTS AND HUMANITIES
 ■ SCIENCE AND MATHEMATICS
 ■ ENGINEERING AND COMPUTING
 ■ SOCIAL SCIENCES AND EDUCATION
 ■ BUSINESS AND LAW
 ■ EARTH AND ENVIRONMENTAL SCIENCE
 ■ MEDICINE AND HEALTHCARE SCIENCE
 ■ FOUNDATION YEARS

| DETAILS | TIME | DURATION | LOCATION* |
|---|---|------------|--|
| CIVIL ENGINEERING | | | |
| Subject talk | 10:30 12:30 14:30 | 45 minutes | Boldrewood Innovation Campus, Building 176, Level 1, |
| Talk: Which engineering subject should I study? Find out about our engineering subjects and choose the right one for you | 10:00 11:00 12:00 13:00 | 30 minutes | Building 5 (Eustice), Level 2 |
| Drop in | 10:00–16:00 | | Boldrewood Innovation Campus, Building 176, Level 1 |
| Visit engineering facilities at Highfield Campus | 10:00–16:00 | | Details (including map) available from Building 18 Information Fair, Building 7 and Boldrewood Innovation Campus Information Point |
| Visit engineering facilities at Boldrewood Innovation Campus | 10:00–16:00 | | Details (including map) available from Building 18 Information Fair, Building 7 and Boldrewood Innovation Campus Information Point |
| COMPUTER SCIENCE AND SOFTWARE ENGINEERING | | | |
| Overview of degrees in electronics and computer science | 10:30 14:30 | 50 minutes | Building 52, Turner Sims Concert Hall |
| Taster lecture (topics available at Building 53 welcome desk) | 11:00 12:30 13:30 14:30 | 30 minutes | Building 2A, Arts Annex, Lecture Theatre J |
| Careers and employability talk | 12:00 13:00 14:00 | 30 minutes | Building 53 (Mountbatten), Level 4, Room 4025 |
| Computing lab tour | 09:30 10:00 11:00 11:30 12:00 13:00 13:30 14:00 15:00 15:30 | 30 minutes | Building 53 (Mountbatten), entrance foyer |
| Welcome desk and drop in | 10:00–16:00 | | Building 53 (Mountbatten), entrance foyer |
| CRIMINOLOGY | | | |
| Subject talk | 12:00 | 50 minutes | Building 58 (Murray), Murray Lecture Theatre |
| <i>Ecology and conservation: see Biological sciences</i> | | | |
| ECONOMICS | | | |
| Subject talk | 11:00 13:00 15:00 | 50 minutes | Building 58 (Murray), Murray Lecture Theatre |
| Explore how the Bloomberg Terminal brings together real-time industry market data, breaking news and powerful analytics | 09:30–16:30 | 30 minutes | Building 58 (Murray), Level 1, Room 1053, Bloomberg Trading Suite |
| EDUCATION/EDUCATION AND PSYCHOLOGY | | | |
| Subject talk | 12:00 | 60 minutes | Building 34 (Education), Lecture Theatre |

*Location is on Highfield Campus unless otherwise specified

| DETAILS | TIME | DURATION | LOCATION* |
|--|---|------------|---|
| ELECTRICAL AND ELECTRONIC ENGINEERING | | | |
| (Includes Aerospace Electronic Engineering, Biomedical Electronic Engineering, Electrical Engineering, Electronic Engineering and Mechatronic Engineering) | | | |
| Overview of degrees in electronics and computer science | 10:30 14:30 | 50 minutes | Building 52, Turner Sims Concert Hall |
| Taster lecture (topics available at Building 53 welcome desk) | 11:00 12:30 13:30 14:30 | 30 minutes | Building 2A, Arts Annex, Lecture Theatre J |
| Differences between Electronic/Electrical specialisms | 11:30 13:30 | 30 minutes | Building 53 (Mountbatten), Level 4, Room 4025 |
| Biomedical Electronic Engineering: subject talk and lab tour | 11:30 12:30 13:30 15:30 | 30 minutes | Building 85, entrance foyer |
| Careers and employability talk | 12:00 13:00 14:00 | 30 minutes | Building 53 (Mountbatten), Level 4, Room 4025 |
| Teaching lab tour | 09:30 10:00 11:00 11:30 12:00 13:00 13:30 14:00 15:00 15:30 | 30 minutes | Building 53 (Mountbatten), entrance foyer |
| High Voltage Lab and Electric Power Engineering tour and demo | 11:30 12:30 13:30 15:30 | 30 minutes | Entrance to Building 20 (High Voltage Lab) |
| Nanotech Clean Room tour | 11:30 12:30 13:30 15:30 | 30 minutes | Building 53 (Mountbatten), entrance foyer |
| Welcome desk and drop in | 10:00–16:00 | | Building 53 (Mountbatten), entrance foyer |
| ENGLISH | | | |
| Subject talk | 11:15 13:15 15:15 | 45 minutes | Avenue Campus, Building 65, Lecture Theatre A |
| Tour of Avenue Campus | 10:00–15:45 (departing every 15 minutes) | 20 minutes | Avenue Campus, Building 65, South Corridor |
| Drop in | 10:00–16:00 | | Avenue Campus, Building 65, Room 1097 |
| Study abroad opportunities | 10:00–16:00 | | Avenue Campus, Building 65, North Corridor |
| ENGLISH LANGUAGE AND LINGUISTICS | | | |
| Subject talk | 13:15 | 45 minutes | Avenue Campus, Building 65, Lecture Theatre B |
| Tours of Avenue Campus | 10:00–15:45 (departing every 15 minutes) | 20 minutes | Avenue Campus, Building 65, South Corridor |
| Drop in | 10:00–16:00 | | Avenue Campus, Building 65, Room 1163 |
| Study abroad opportunities | 10:00–16:00 | | Avenue Campus, Building 65, North Corridor |
| ENVIRONMENTAL SCIENCE | | | |
| Subject talk | 10:15 11:30 13:45 | 45 minutes | Building 28, Level 1, Room 1021 |
| Drop in | 09:45–15:30 | | Building 28, Level 1, Room 1019 |
| Taster lecture | 12:45 | 45 minutes | Building 28, Level 1, Room 1021 |

| DETAILS | TIME | DURATION | LOCATION* |
|---|---|------------|--|
| FILM STUDIES | | | |
| Subject talk | 10:15 12:15 | 45 minutes | Avenue Campus, Building 65, Lecture Theatre C |
| Tour of Avenue Campus | 10:00–15:45 (departing every 15 minutes) | 20 minutes | Avenue Campus, Building 65, South Corridor |
| Drop in | 10:00–16:00 | | Avenue Campus, Building 65, Room 1095 |
| Study abroad opportunities | 10:00–16:00 | | Avenue Campus, Building 65, North Corridor |
| FINANCE | | | |
| Subject talk | 11:30 13:30 | 40 minutes | Building 2, Level 1, Lecture Theatre 1039 |
| Explore how the Bloomberg Terminal brings together real-time industry market data, breaking news and powerful analytics | 09:30–16:30 | 30 minutes | Building 58 (Murray), Level 1, Room 1053, Bloomberg Trading Suite |
| FOUNDATION YEAR (ENGINEERING, MATHS, PHYSICS, GEOPHYSICS) | | | |
| Subject talk | 11:00 14:00 | 45 minutes | Building 5, Level 2 |
| Drop in | 10:00–16:00 | | Building 5, Level 2 |
| FOUNDATION YEAR: SCIENCE (BIOLOGY, CHEMISTRY, ENVIRONMENTAL SCIENCE) | | | |
| Subject talk | 13:40 | 30 minutes | Building 29, Room 2075 |
| Drop in | 11:45–12:45 14:45–15:45 | | Building 29, Room 2075 |
| GEOGRAPHY (SEE ALSO POPULATION AND GEOGRAPHY FOR A RELATED COURSE) | | | |
| Subject talk | 11:30 12:30 13:30 | 50 minutes | Building 44 (Shackleton), Level 1, Lecture Theatre A |
| Physical Geography lab drop in | 10:00–15:00 | | Building 44 (Shackleton), Level 1 labs |
| GEOLOGY | | | |
| Subject talk | 11:30 15:00 | 45 minutes | National Oceanography Centre Southampton, Level 4, Charnock Theatre |
| Tours and demonstrations | 09:30–16:00 | 60 minutes | National Oceanography Centre Southampton, Level 4, reception |
| Drop in | 09:30–17:00 | | National Oceanography Centre Southampton, Level 4, area outside seminar room |
| GEOPHYSICAL SCIENCES | | | |
| Subject talk | 11:30 15:00 | 45 minutes | National Oceanography Centre Southampton, Level 4, Charnock Theatre |
| Tours and demonstrations | 09:30–16:00 | 60 minutes | National Oceanography Centre Southampton, Level 4, reception |
| Drop in | 09:30–17:00 | | National Oceanography Centre Southampton, Level 4, area outside seminar room |
| HEALTHCARE SCIENCE (CARDIAC PHYSIOLOGY) | | | |
| Subject talk | 10:15 11:30 14:45 | 30 minutes | Building 67, Level 2 |
| Drop in | 09:00–16:00 | | Building 67, Level 2 |
| Admissions help desk | 10:00–15:00 | | Building 67, Level 2 |
| Placement zone | 10:00–15:00 | | Building 67, Level 2 |

*Location is on Highfield Campus unless otherwise specified

| DETAILS | TIME | DURATION | LOCATION* |
|---|---|------------|--|
| HISTORY | | | |
| Subject talk | 10:15 12:15 14:15 | 45 minutes | Avenue Campus, Building 65, Lecture Theatre A |
| Tour of Avenue Campus | 10:00–15:45 (departing every 15 minutes) | 20 minutes | Avenue Campus, Building 65, South Corridor |
| Drop in | 10:00–16:00 | | Avenue Campus, Building 65, Room 1173 |
| Study abroad opportunities | 10:00–16:00 | | Avenue Campus, Building 65, North Corridor |
| LAW | | | |
| Subject talk (includes subject talk, taster lecture and student experience talk) | 11:00 13:30 | 60 minutes | Building 2, Level 1, Lecture Theatre D (1089) |
| MARINE BIOLOGY AND OCEANOGRAPHY | | | |
| Subject talk | 10:00 13:30 16:00 | 45 minutes | National Oceanography Centre Southampton, Level 4, Charnock Theatre |
| Tours and demonstrations | 09:30–16:00 | 60 minutes | National Oceanography Centre Southampton, Level 4, reception |
| Drop in | 09:30–17:00 | | National Oceanography Centre Southampton, Level 4, area outside seminar room |
| MARKETING | | | |
| Subject talk | 11:30 13:30 | 40 minutes | Building 2, Level 3, Room 3043 |
| Explore how the Bloomberg Terminal brings together real-time industry market data, breaking news and powerful analytics | 09:30–16:30 | 30 minutes | Building 58 (Murray), Level 1, Room 1053, Bloomberg Trading Suite |
| MATHEMATICAL SCIENCES | | | |
| Subject talk: Mathematical Sciences | 11:00 13:30 | 45 minutes | Building 54 (Mathematical Sciences), Level 4, Lecture Theatre 4A (4011) |
| Subject talk: MMath Mathematical Physics | 13:00 | 30 minutes | Building 54 (Mathematical Sciences), Level 7, Lecture Theatre 7B (7035) |
| Taster lecture | 12:00 14:30 | 30 minutes | Building 54 (Mathematical Sciences), Level 4, Lecture Theatre 4A (4011) |
| Explore how the Bloomberg Terminal brings together real-time industry market data, breaking news and powerful analytics | 09:30–16:30 | 30 minutes | Building 58 (Murray), Level 1, Room 1053, Bloomberg Trading Suite |
| Maths Fair: interactive activities, puzzles and demonstrations by maths staff and students | 10:30–14:30 | | Building 56 (Mathematical Sciences Student Centre) |
| Q&A with Head of Mathematical Sciences and Admissions Tutor | 11:45 14:15 | 60 minutes | Building 56 (Mathematical Sciences Student Centre) |

■ ARTS AND HUMANITIES
 ■ SCIENCE AND MATHEMATICS
 ■ ENGINEERING AND COMPUTING
 ■ SOCIAL SCIENCES AND EDUCATION
 ■ BUSINESS AND LAW
 ■ EARTH AND ENVIRONMENTAL SCIENCE
 ■ MEDICINE AND HEALTHCARE SCIENCE
 ■ FOUNDATION YEARS

| DETAILS | TIME | DURATION | LOCATION* |
|---|---|------------|--|
| MECHANICAL ENGINEERING | | | |
| Subject talk | 09:45 11:45 13:45 | 45 minutes | Building 7 (Lanchester), Level 3, Lecture Theatre A |
| Talk: Which engineering subject should I study? Find out about our engineering subjects and choose the right one for you | 10:00 11:00 12:00 13:00 | 30 minutes | Building 5 (Eustice), Level 2 |
| Drop in | 10:00–16:00 | | Boldrewood Innovation Campus, Building 177, Level 3 |
| Visit engineering facilities at Highfield Campus | 10:00–16:00 | | Details (including map) available from Building 18 Information Fair, Building 7 and Boldrewood Innovation Campus Information Point |
| Visit engineering facilities at Boldrewood Innovation Campus | 10:00–16:00 | | Details (including map) available from Building 18 Information Fair, Building 7 and Boldrewood Innovation Campus Information Point |
| <i>Mechatronic Engineering: See Electrical and Electronic Engineering</i> | | | |
| MEDICINE | | | |
| Subject talk | 10:00 12:30 | 60 minutes | Building 32, Level 1, Lecture Theatre |
| MIDWIFERY | | | |
| Subject talk | 11:15 | 45 minutes | Building 67, Level 1 |
| Drop in | 10:00–15:00 | | Building 67, Level 2 |
| Skills taster session | 10:00–15:00 | | Building 67, Level 2 |
| Admissions help desk | 10:00–15:00 | | Building 67, Level 2 |
| Placement zone | 10:00–15:00 | | Building 67, Level 2 |
| MODERN LANGUAGES AND LINGUISTICS | | | |
| Subject talk | 10:15 12:15 15:15 | 45 minutes | Avenue Campus, Building 65, Lecture Theatre B |
| Tour of Avenue Campus | 10:00–15:45 (departing every 15 minutes) | 20 minutes | Avenue Campus, Building 65, South Corridor |
| Tour of the Centre for Language Study | 10:15–15:30 (departing every 15 minutes) | 30 minutes | Avenue Campus, Building 65, South Corridor |
| Drop in | 10:00–16:00 | | Avenue Campus, Building 65, Room 1163 |
| Study abroad opportunities | 10:00–16:00 | | Avenue Campus, Building 65, North Corridor |
| MUSIC | | | |
| Subject talk | 11:00 14:00 | 45 minutes | Building 6 (Nuffield), Room 6/1081 |
| Performance | 12:30 | 45 minutes | Building 52 (Turner Sims), Concert Hall |
| Tour of Music department | 10:00–15:45 (departing every 30 minutes) | 25 minutes | Building 2, Music department, foyer |
| Drop in | 10:00–16:00 | | Building 2, Room 2061 |
| NATURAL SCIENCES | | | |
| Subject talk | 11:00 13:30 | 30 minutes | Building 85, Room 2209 |
| Drop in | 10:00–15:30 | | Building 85, Room 2211 |
| <i>Neuroscience: See Biological sciences</i> | | | |

*Location is on Highfield Campus unless otherwise specified

| DETAILS | TIME | DURATION | LOCATION* |
|--|---|------------|---|
| NURSING | | | |
| Subject talk | 10:15 13:15 | 45 minutes | Building 67, Level 1 |
| Drop in | 10:00–15:00 | | Building 67, Level 1 |
| Skills taster session | 10:00–15:00 | | Building 67, Level 2 |
| Admissions help desk | 10:00–15:00 | | Building 67, Level 2 |
| Placement zone | 10:00–15:00 | | Building 67, Level 2 |
| OCCUPATIONAL THERAPY | | | |
| Subject talk | 12:30 | 45 minutes | Building 67, Level 1 |
| Workshop | 13:30 | 60 minutes | Building 67, Level 1 |
| Drop in | 10:00–15:00 | | Building 67, Level 2 |
| Admissions help desk | 10:00–15:00 | | Building 67, Level 2 |
| Placement zone | 10:00–15:00 | | Building 67, Level 2 |
| <i>Oceanography: See Marine Biology and Oceanography</i> | | | |
| <i>Pharmacology: See Biological sciences</i> | | | |
| PHILOSOPHY | | | |
| Subject talk | 11:15 14:15 | 45 minutes | Avenue Campus, Building 65, Lecture Theatre B |
| Tour of Avenue Campus | 10:00–15:45 (departing every 15 minutes) | 20 minutes | Avenue Campus, Building 65, South Corridor |
| Drop in | 10:00–16:00 | | Avenue Campus, Building 65, Room 1093 |
| Study abroad opportunities | 10:00–16:00 | | Avenue Campus, Building 65, North Corridor |
| PHYSICS AND ASTRONOMY | | | |
| Subject talk | 11:00 13:00 | 50 minutes | Building 46, Level 3, Lecture Theatre A |
| Tour of building and labs | 10:00–16:00 | 30 minutes | Building 46, foyer |
| Career destinations talk | 13:00 15:00 | 20 minutes | Building 46, Lecture Theatre C |
| Planetarium astronomy show | 12:00 13:00 14:00 15:00 | 60 minutes | Building 46, Level 5, seminar room |
| Meet academics and students | 10:00–16:00 | | Building 46, foyer |
| Try out a lab experiment (limited spaces) | 12:00 13:00 14:00 15:00 | | Building 46 foyer |
| PHYSIOTHERAPY | | | |
| Subject talk | 12:15 14:15 | 45 minutes | Building 67, Level 1 |
| Drop in | 10:00–15:00 | | Building 67, Level 2 |
| Admissions help desk | 10:00–15:00 | | Building 67, Level 2 |
| Placement zone | 10:00–15:00 | | Building 67, Level 2 |

| DETAILS | TIME | DURATION | LOCATION* |
|--|-------------------------------|---------------------------|--|
| PODIATRY | | | |
| Subject talk | 11:15 | 45 minutes | Building 67, Level 1 |
| Drop in | 10:00–15:00 | | Building 67, Level 2 |
| Admissions help desk | 10:00–15:00 | | Building 67, Level 2 |
| Placement zone | 10:00–15:00 | | Building 67, Level 2 |
| POLITICS AND INTERNATIONAL RELATIONS | | | |
| Subject talk | 10:00 | 50 minutes | Building 2a (Arts Annex), Lecture Theatre J |
| | 14:00 | | Building 58 (Murray), Murray Lecture Theatre |
| POPULATION AND GEOGRAPHY | | | |
| Subject talk | 12:30 | 45 minutes | Building 58 (Murray), Level 1, Lecture Room G |
| Field trip video | 10:00–15:00 | five-minute video on loop | Building 58 (Murray), Level 1, Lecture Room A |
| PSYCHOLOGY | | | |
| Subject talk | 11:30 13:30 | 40 minutes | Building 52 (Turner Sims), Concert Hall |
| QUANTITATIVE SOCIAL SCIENCE | | | |
| Meet the Course Leader | 11:00 | 30 minutes | Building 58 (Murray), Level 1, Lecture Room B |
| SHIP SCIENCE | | | |
| Subject talk | 11:00 14:00 | 45 minutes | Boldrewood Innovation Campus, Building 185, Level 3 |
| Talk: Which engineering subject should I study? Find out about our engineering subjects and choose the right one for you | 10:00 11:00 12:00 13:00 | 30 minutes | Building 5 (Eustice), Level 2 |
| Drop in | 10:00–16:00 | | Boldrewood Innovation Campus, Building 185, Level 3 |
| Visit engineering facilities at Highfield Campus | 10:00–16:00 | | Details (including map) available from Building 18 Information Fair, Building 7 and Boldrewood Innovation Campus Information Point |
| Visit engineering facilities at Boldrewood Innovation Campus | 10:00–16:00 | | Details (including map) available from Building 18 Information Fair, Building 7 and Boldrewood Innovation Campus Information Point |
| SOCIOLOGY AND SOCIAL POLICY | | | |
| Subject talk | 10:00 | 50 minutes | Building 58 (Murray), Murray Lecture Theatre |
| <i>Zoology: See Biological sciences</i> | | | |

■ ARTS AND HUMANITIES
 ■ SCIENCE AND MATHEMATICS
 ■ ENGINEERING AND COMPUTING
 ■ SOCIAL SCIENCES AND EDUCATION
 ■ BUSINESS AND LAW
 ■ EARTH AND ENVIRONMENTAL SCIENCE
 ■ MEDICINE AND HEALTHCARE SCIENCE
 ■ FOUNDATION YEARS

*Location is on Highfield Campus unless otherwise specified

Spend time relaxing in our outdoor spaces on campus.



EXPLORE THE CITY

Southampton is one of the most lively and dynamic cities in the south of England. As a bustling port city, Southampton has been ranked the third best place to live and work in the UK.*

The city has a rich arts scene, from museums, music venues and art galleries, to magnificent theatres and rich historical buildings such as the Tudor House and Gardens.

If you enjoy shopping, visit Westquay, the region's premier retail destination that also boasts leading dining chains found only in a handful of places outside of London.

Enjoy a freshly brewed coffee in the Cultural Quarter while enjoying a spot of street theatre. Or, if you prefer scenic views, there are plenty of cafés and restaurants by Ocean Village Marina to sit outside and enjoy the sea breeze.

The nightlife in Southampton is buzzing, with popular bars and clubs for you to visit and a variety of student promotions to entice you.

The award-winning parks make Southampton the greenest city in southern England, and Southampton Common has over 300 acres of woodland, parkland and nature trails for you to enjoy.

Why not take one of our free bus services after the Open Day and explore all that the city has to offer?

If you don't have time to visit the city in person, you can still see what Southampton has to offer at our 360 degree virtual experience room, located in the central zone of the Information Fair.

“Southampton is a truly vibrant city that is full of life.”

Emily Fry
BA English, second year

Emily is one of our student bloggers; to follow Emily and fellow students on their adventures in Southampton, see our Life at Southampton blog
www.southampton.ac.uk/blog/life-at-southampton



*Good Growth for Cities Index 2017, Demos-PwC

STUDENTS' UNION



- Dance the night away in the Union's venue for large events, such as gigs and student balls
- Become a DJ or director at the Union's award-winning Surge Radio and SUSUtv
- Try out journalism with one of the Union's award-winning magazines, *Wessex Scene* or *The Edge*

“It's hard to imagine having that many possibilities at my fingertips ever again in my life, with over 340 clubs and societies, including 94 sports clubs, 30 or so performing arts groups – and the ever-present option of setting something up myself with support from the Union.”

Paul Stevens
BA French and Spanish, 2017

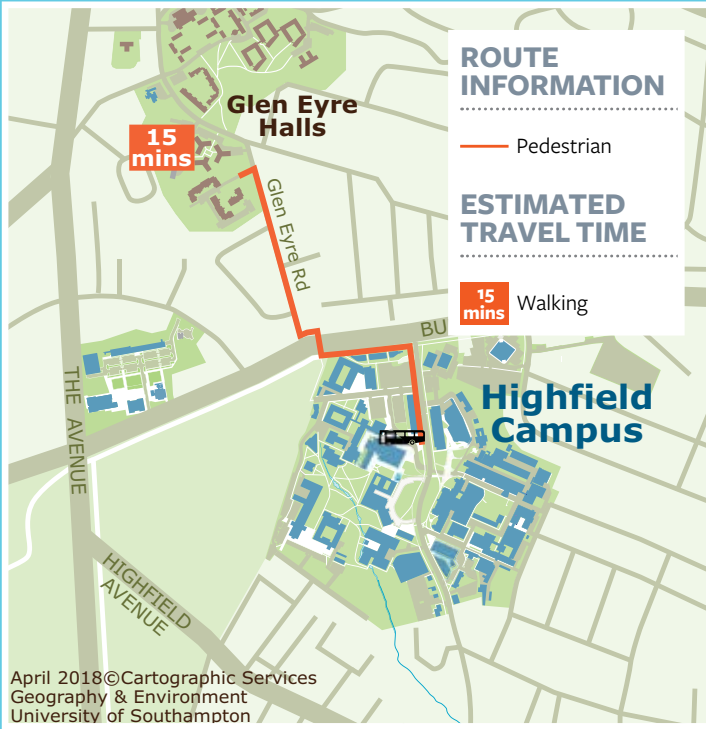
When you join the University, you automatically become a member of the Students' Union. The Students' Union is independent from the University and is run for students by students, to unlock the potential and enrich the life of every student.

- Run for one of the positions in the Students' Union's elections, and become the voice of students across the University
- Experience Freshers', a full programme of activities and events to help you settle in, meet new people and find out more about university life
- Discover a new talent: you can join over 340 sports clubs and societies, from archery, quidditch and performing arts to football, debating and tennis
- Have fun and give back with RAG (Raise and Give), which organises fundraising events to benefit charities
- Eat at The Bridge, with food from a Michelin-trained chef at student prices
- Socialise with friends in The Stag's sports bar and experience their legendary karaoke night
- Catch a film in the 260-seat cinema, run by Union Films, a team of student volunteers



Find out more:
www.susu.org

ACCOMMODATION



A selection of our halls of residence will be available to view during the Open Day. We offer a range of high-quality accommodation, with different room types and locations to suit everyone.

As well as the sites open today, we also have many other halls of residence available for you to apply to live in.

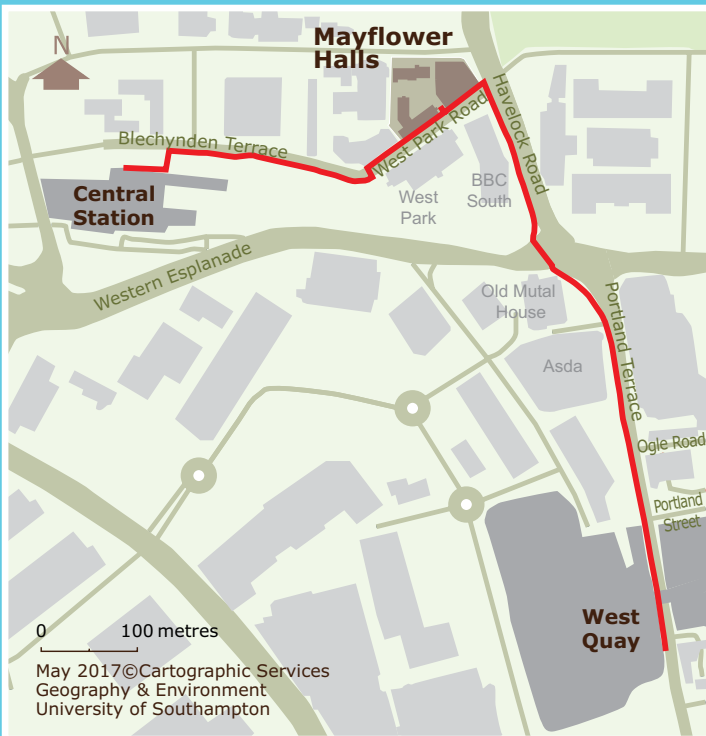
To find out more, please visit our Accommodation team within the Information Fair in Building 18.

Special requirements

If you have any special requirements for your room, need an adapted room, or would like to see an adapted room on the Open Day, please speak to our Accommodation team at the Information Fair, or at one of our halls sites.

Glen Eyre Halls

Open for viewing between 10:00 and 16:30



Mayflower Halls

To view Mayflower Halls, take the shuttle bus to Southampton Central train station and follow the AA walking route signs.

Open for viewing between 12:00 and 17:00





01



02

03



“My halls were excellent; close to uni, clean, comfortable and homely. I also had the pleasure of making some amazing friends. The brilliant thing about staying in halls, I think, is how social it is.”

Benedict Landauer
BA Music, third year

- 01 Glen Eyre complex, common room
- 02 Spacious accommodation at Mayflower Halls
- 03 Mayflower Halls, Southampton
- 04 Glen Eyre Halls accommodation
- 05 Chamberlain Halls, Glen Eyre complex

HIGHFIELD CAMPUS MAP

Highfield Campus is our main campus and caters for most of our academic courses. Incorporating state-of-the-art research and teaching facilities, it boasts new and refurbished student facilities such as the Students' Union and the Jubilee Sports Centre.



| | | | |
|------------|-------------------------------|-------------------|---|
| KEY | New South Gower building zone | Information Point | Parking for disabled persons |
| | Building numbers | Catering Outlet | Toilets for disabled persons (with wheelchair access) |
| | Information Fair | Marquee | Accessible payphone |
| | Footpaths | First Aid | Wheelchair route (with assistance) |
| | Highfield Interchange | | |

“I love the variety we have at Southampton; despite being right by the city there is plenty of green space. We are so lucky to have such a nice working environment.”

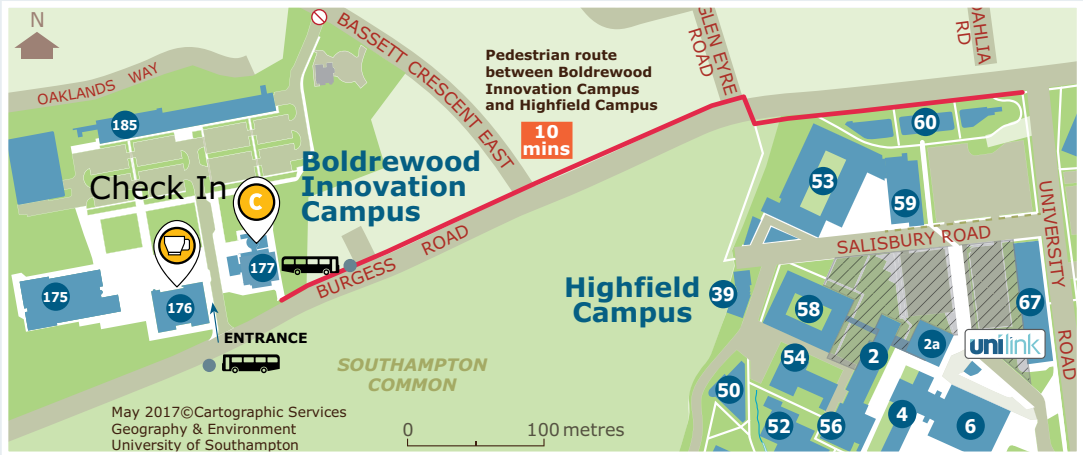
Caroline Ambrose
BSc Geography, third year



CAMPUS MAPS

BOLDREWOOD INNOVATION CAMPUS ROUTE TO HIGHFIELD CAMPUS

A short walk from Highfield Campus, our new Boldrewood Innovation Campus houses our centre for innovation, business and education in maritime engineering and engineering sciences.



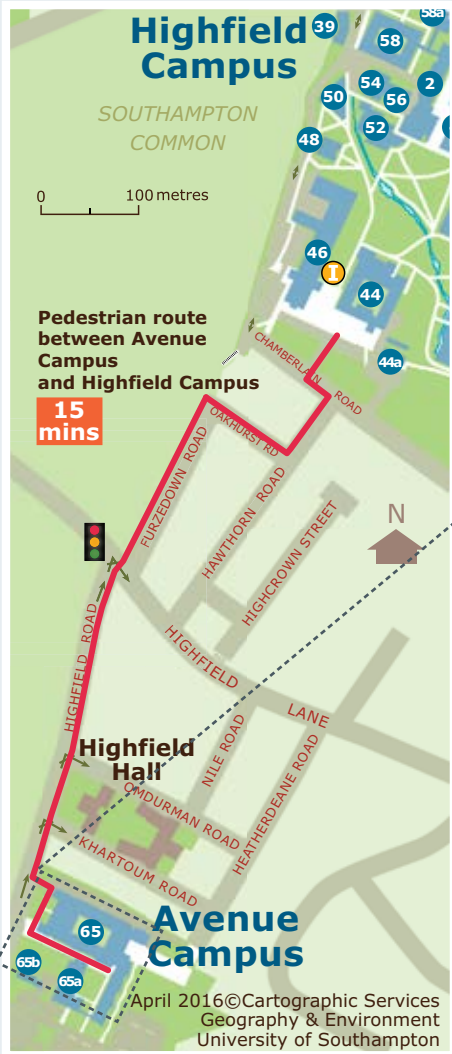
Boldrewood Innovation Campus

NATIONAL OCEANOGRAPHY CENTRE SOUTHAMPTON

Our waterfront campus is one of the world’s leading research centres for the study of ocean and earth sciences.

Pre-booked parking is available at the National Oceanography Centre Southampton (NOCS) for those interested in subjects based at the campus. NOCS can be accessed by bus from Westquay and Southampton Central train station, as well as from Highfield Campus. Student ambassadors will be available to direct you to the correct bus.





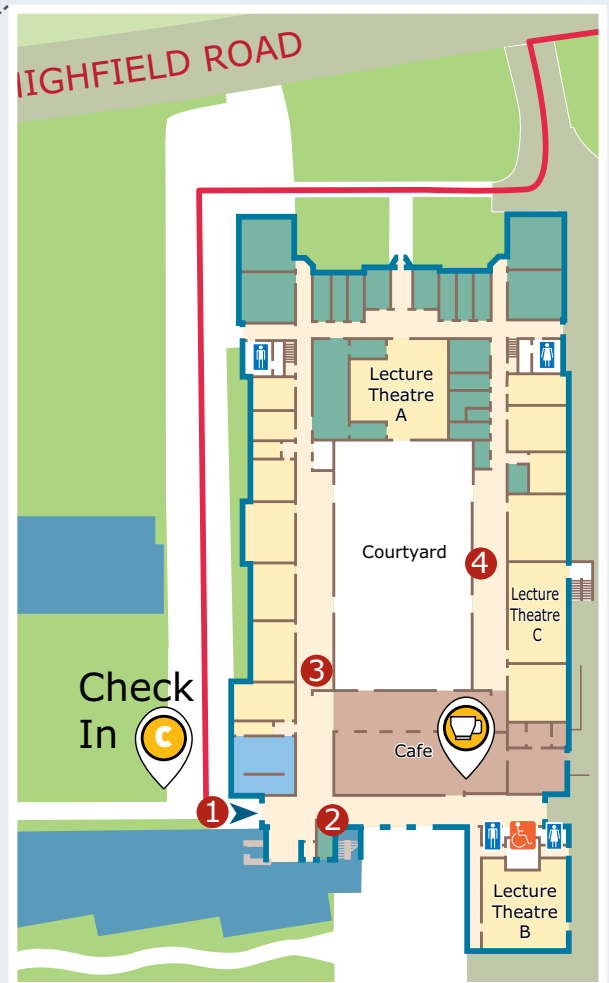
AVENUE CAMPUS MAPS

Our humanities campus houses a state-of-the-art purpose-built Archaeology Building and is located on the edge of Southampton Common, a short walk from Highfield.

If you are arriving at Avenue by bus, you will be dropped off and picked up on The Avenue (A33). Look out for student ambassadors who will direct you between the bus stop and the campus.

KEY

- 1 Main entrance
- 2 Information desk
- 3 Avenue Campus tours meeting point
- 4 Study abroad opportunities



Avenue Campus

CATERING FACILITIES

A wide variety of restaurants and cafés will be open around the University, offering a range of refreshments from drinks and snacks to full meals.

| BUILDING 38, STAFF SOCIAL CENTRE | | |
|--|-------------|---|
| B38 Starbucks | 09:00–16:00 | All your favourite Starbucks drinks, pastries, cakes and muffins |
| Café express 38 | 09:00–15:00 | Hot and cold drinks, sandwiches and snacks |
| Terrace Restaurant | 11:30–14:30 | Variety of traditional and international hot meals, salads and sandwiches |
| The Arlott Bar | 08:30–17:00 | Barista made hot and cold drinks. Tasty pastries, baguettes, cakes and muffins |
| STAFF SOCIAL CENTRE FRONT LAWN | | |
| Autumnal Food & Drink Fayre | 11:00–15:00 | A selection of hearty autumnal food and drink |
| BUILDING 12, HARTLEY LIBRARY | | |
| Library Café | 09:00–15:00 | Paninis, toasties, sandwiches and burritos, hot and cold drinks |
| INTERCHANGE KIOSK GRAB & GO | | |
| Kiosk | 08:00–15:30 | Sandwiches, snacks, hot and cold drinks |
| BUILDING 42 | | |
| Piazza Food Court | 08:30–15:00 | Breakfast offers, pizza, chicken and sides, snacks, sandwiches |
| Piazza Starbucks | 08:30–16:00 | All your favourite Starbucks drinks, delicious cakes and muffins |
| BUILDING 85 | | |
| Café 85 | 09:00–15:00 | Hot and cold drinks, sandwiches and snacks |
| NATIONAL OCEANOGRAPHY CENTRE SOUTHAMPTON (NOCS) | | |
| NOCS Café | 08:30–16:00 | Barista-style hot drinks, traditional hot food, cold drinks, sandwiches, cakes, snacks and a selection of street food |
| AVENUE CAMPUS | | |
| Avenue Café | 08:30–16:00 | Barista-style hot drinks, cold drinks, sandwiches, cakes and snacks |
| BOLDREWOOD INNOVATION CAMPUS | | |
| Boldrewood Café | 09:00–16:00 | Barista-style hot drinks, cold drinks, cakes, cookies, muffins and a selection of hot food |
| STUDENTS' UNION | | |
| The Shop | 10:00–16:00 | Great value and convenience for a range of groceries and products, situated next to the Students' Union |
| The Stag's | 11:30–19:00 | Offers a large range of alcoholic and soft drinks, and great deals on food, including pizzas and hotdogs |
| The Bridge | 08:00–15:30 | A bistro bar offering a variety of hot food, salads, cakes and drinks |

YOUR PLANNER

Use this planner to build your day around the events that interest you, to help you get the most out of your day.

Remember to allow enough time to walk/travel between buildings or campuses. See page 7 for approximate travel times.

Please also remember that some talks are very popular, so plan some contingencies in case you find a talk is full and you have to return later.

Don't forget to have your ticket ready to be scanned.

| TIME | EVENT | VENUE | CAMPUS |
|-------|-------|-------|--------|
| 09:00 | | | |
| 09:15 | | | |
| 09:30 | | | |
| 09:45 | | | |
| 10:00 | | | |
| 10:15 | | | |
| 10:30 | | | |
| 10:45 | | | |
| 11:00 | | | |
| 11:15 | | | |
| 11:30 | | | |
| 11:45 | | | |
| 12:00 | | | |
| 12:15 | | | |
| 12:30 | | | |
| 12:45 | | | |
| 13:00 | | | |
| 13:15 | | | |
| 13:30 | | | |
| 13:45 | | | |
| 14:00 | | | |
| 14:15 | | | |
| 14:30 | | | |
| 14:45 | | | |
| 15:00 | | | |
| 15:15 | | | |
| 15:30 | | | |
| 15:45 | | | |
| 16:00 | | | |
| 16:15 | | | |
| 16:30 | | | |
| 16:45 | | | |
| 17:00 | | | |
| 17:15 | | | |
| 17:30 | | | |
| 17:45 | | | |
| 18:00 | | | |