

Programme Specification

Master of Science Physiotherapy (Pre-registration): Academic Year 2017-18

This specification provides a concise summary of the main features of the programme and the learning outcomes that a typical student might reasonably be expected to achieve and demonstrate if s/he takes full advantage of the learning opportunities that are provided.

Awarding Institution	University of Southampton
Teaching Institution	University of Southampton
Mode of study	Full time
Duration in years	Two years following standard progression for a FT student
Accreditation details	Currently accredited by: Health and Care Professions Council (HCPC) Chartered Society of Physiotherapy (CSP)
Final award	MSc Physiotherapy (Pre-registration)
Name of award	Master of Science
Interim Exit awards	MSc Health Studies Postgraduate Diploma Physiotherapy (with eligibility for registration) Postgraduate Diploma of Health Studies Postgraduate Certificate of Health Studies
FHEQ level of final award	Level 7
UCAS code	Not applicable: recruitment directly to University/Faculty for postgraduate programmes
QAA Subject Benchmark or other external reference	Subjects Allied to Medicine (QAAHE 2001)
Programme Lead	Peter White
Date specification was written	December 2014
Date programme was validated	February 2015
Date specification last updated	April 2017

Programme Overview

Brief outline of the programme

Physiotherapy has an essential contribution to the health and wellbeing of people across their lifespan. Our programme addresses some of the drivers raised by the changing landscape of healthcare and legislation. During the physiotherapy degree you will develop the knowledge, understanding and specific physiotherapy clinical skills to enable you to practice on completion of the programme.

The physiotherapy approach accounts for the 'whole' person and requires a wide range of skills. Through the programme our graduates will develop the skills and sensitivity commensurate with

adopting a person-centred approach and being an autonomous clinician, educator, evaluator, and manager capable of working within different settings and a changing healthcare world.

The exercise of clinical judgment and informed interpretation is at the heart of this MSc degree in physiotherapy. To enable students to develop clinical judgment and informed interpretation, we have adopted the educational principles taken from the constructivist, cognitivist, experiential, reflective and behavioral learning theories. These learning strategies will facilitate lifelong learning with the aim of creating leaders in healthcare who are able to question, improve and innovative health care. Furthermore, there is recognition that clinical reasoning is a desirable quality of an autonomous practitioner and this requires development throughout the programme.

Learning and teaching

We have adopted current clinical reasoning models and ensure that this essential skill builds iteratively within the curriculum over the two year MSc programme. In principle, to achieve this, the curriculum follows three key stages: firstly, students acquire a comprehensive knowledge base that consists of the domain specific subjects and procedural knowledge. Secondly, this knowledge is applied to common clinical conditions across all specialties, so that students develop their cognitive processing skills so that they can assess and identify problems, carry out treatment techniques and evaluate the effectiveness of treatment. This is reinforced by clinical placements. Thirdly, students synthesise and evaluate their practice from a wide evidence base and this coupled with their prior knowledge and clinical practice, their knowledge is encapsulated and conceptualised. These three principles are iterative and are embedded throughout the two years of the pre-registration MSc programme.

The MSc programme is delivered over two years and builds on your existing learning from a previous suitable undergraduate degree (see criteria for admission). It is anticipated that by using your advanced scholarly thinking, you will be able to progress and be a competent independent learner so that you can develop your understanding, skills and attitudes. The programme will utilise your existing research skills to develop advanced critical and analytical competence so that you consistently apply current research in practice and enable you to be proactive in auditing practice, generating research proposals and evaluating the efficacy of your practice.

The teaching will be delivered with the BSc cohort and also with independent plenaries so as to facilitate your knowledge, understanding and specific physiotherapy clinical skills. There will also be opportunities to learn with and from other healthcare professionals on clinical placement so that you develop competence in inter-professional practice, and so enable you to become a competent, autonomous, reflective, ethical physiotherapist on completion of the programme.

The Faculty of Health Sciences provides a learning environment that will help students to reach their potential, both academically and clinically. Student learning and teaching benefits from a wide range of resources and an evidence base that is also underpinned with our own Faculty's research, and the students have the opportunity to participate in the research process under the guidance of our research team. The clinical experts in our Faculty teaching team will develop students' clinical skills and skills will be further developed whilst on over 1000 hours of clinical placements. The curriculum is values-based and special emphasis placed on the humanitarian virtues of care, empathy and compassion as outlined by the NHS constitution.

Assessment

You will be assessed on academic work and clinical placements, using a variety of methods. These include written exams, essays, oral presentations, practical exams and a research project.

As a research-led University, we undertake a continuous review of our programmes to ensure quality enhancement and to manage our resources. As a result, this programme may be revised during a student's period of registration, however, any revision will be balanced against the requirement that the student should receive the educational service expected. Please read our [Disclaimer](#) to see why, when and how changes may be made to a student's programme.

Programmes and major changes to programmes are approved through the University's programme validation process which is described in the University's Quality Handbook.

Educational Aims of the Programme

The main aims of the programme are to:

- Build on your existing learning to develop your understanding, skills and attitudes to enable you to become independent learners and competent, autonomous, reflective, ethical physiotherapists utilising advanced scholarly thinking which you will use to promote progress in your professional practice.
- Develop competence in applying professional skills to the practice of physiotherapy.
- Extend key, transferable skills for general use in graduate employment so that you become accomplished autonomous practitioners in team and independent situations.
- Build on your existing research skills to develop advanced critical and analytical competence so that you consistently apply current research in practice and enable you to be proactive in auditing practice, generating research proposals and evaluating the efficacy of your practice.
- Provide you with the opportunities to learn with and from other healthcare professionals so that you develop competence in inter-professional practice. You will have advanced group participation skills and abilities to appraise groups/team function.
- Refine independent study and life-long learning skills, accentuating the use of appropriate information technology and sophisticated learning resources.
- Develop reflective skills in order to practice in partnership with patients in a diverse and changing health and social care arena to influence future healthcare provision.
- Prepare you to meet the registration requirements for the Health & Care Professions Council and the University criteria for the award of a Master's degree

Programme Learning Outcomes (same as BSc)

The programme provides opportunities for students to develop and demonstrate the knowledge, understanding, professional skills, intellectual skills and key skills, as stated by the Quality Assurance Agency (<http://www.qaa.ac.uk/en/Publications/Documents/Subject-benchmark-statement-Health-care-programmes---Physiotherapy.pdf>), in the following areas:

Knowledge and Understanding

Having successfully completed this programme you will be able to:

- 1 Critically understand the knowledge required to practise professionally in the field of podiatry and base your practice on a systematic appraisal of established research findings
- 2 Demonstrate originality in the ability to systematically and critically evaluate research findings and generate new knowledge in an aspect of professional practice
- 3 Make sound judgements in both simple and complex clinical situations while exercising critical non-discriminatory judgements with the available information.

Teaching and Learning and Methods

The Faculty underlines its commitment to providing a student centred, friendly, supportive and receptive environment in which students will be able to reach their full potential and assume responsibility for their own learning. Students are supported in a blended learning approach that uses a combination of lectures, practical's, seminars, workshops and online resources so that students experience a case based approach to learning to acquire knowledge and skills in a contextual and integrated manner.

Assessment Methods

The range of assessment methods include: essays; extended essays/dissertations; written case studies; unseen examinations; conference style presentations; production of research protocols; practical examination; clinical placement assessment.

Subject Specific Intellectual and Research Skills

Having successfully completed this programme you will be able to:

- 4 Work autonomously and accountably in relation to clinical decision making whilst recognising your own limitations and your relationship/responsibility within the multi-disciplinary team (MDT)
- 5 Demonstrate reflexivity in personal and professional activities and integrate appropriate attitudes into clinical practice

Teaching and Learning Methods

The Faculty underlines its commitment to engage in the pursuit of research excellence to underpin practice by ensuring students are facilitated and supervised by research-led and research-informed academic educators. Student learning will be facilitated through: lectures; student and tutor-led seminars & debates; action learning sets; e-learning; problem-based learning opportunities; tutorials, self-directed study and conference style presentations.

Assessment methods (includes formative and summative):

The Faculty sets out to allow students to demonstrate their successful learning using fair and reliable assessment methods. These include formative and summative assessments such as; extended essays, research reports; case studies; conference style presentations; portfolios; videos and viva voce examinations.

Transferable and Generic Skills

Having successfully completed this programme you will be able to:

- 6 Demonstrate a highly developed ability to study autonomously and within groups (including inter-professional groups)
- 7 Take initiative and personal responsibility for your continuing ongoing professional development (CPD)

Teaching and Learning Methods

The Faculty underlines its commitment to developing learners who are independent, intrinsically motivated thinkers who can utilise reflective practice to critically analyse their own and others' practice both in the academic and clinical fieldwork settings. The Faculty promotes inter-professional learning where students learn with and from other professional groups to develop team working and leadership skills. Student learning will be facilitated through: attendance & participation in learning sessions; computer based learning; self-directed study, guided learning activities; conference attendance; lead lectures; student and tutor-led seminars; case based learning opportunities; tutorials; academic and personal reviews; personal portfolio development; reflective diaries and clinical / fieldwork practice.

Assessment methods (includes formative and summative):

Clinical placement assessment; essays; extended essays/dissertations; report writing; conference style presentations; production of research protocols; practical demonstrations; case presentation viva; educational packages; unseen exams and portfolios.

Specific professional physiotherapy skills

Having successfully completed this programme you will be able to:

- 8 Understand the legal responsibilities and ethical considerations of professional clinical physiotherapy practice and professional self-regulation;
- 9 Apply appropriate physiotherapy assessment and clinical decision-making to choose an appropriate physiotherapy intervention(s)
- 10 Apply an appropriate physiotherapy intervention safely and effectively in the core areas of physiotherapy practice
- 11 Discuss goal setting and appropriate outcomes of intervention that are patient centred
- 12 Use manual therapy safely and effectively in the application of mobilisation, manipulation, massage, respiratory and neurological therapy techniques;
- 13 Use electrotherapeutic modalities safely and effectively in the selection and application of a range of modalities based on the therapeutic use of electrical, thermal, light, sonic and magnetic energy;
- 14 Work in partnership with a range of clients/patients and carers and in a variety of health, community, private and third sector settings;
- 15 Communicate effectively with patients/clients, including those with challenging behaviours or communication difficulties;

- 16 Demonstrate the ability to use education and teaching skills appropriate to the prevention of illness and injury and in health promotion;
- 17 Maintain accurate records that conform to medico-legal requirements and current data protection legislation.

Teaching and Learning Methods

Attendance & participation in learning sessions; lead lectures; practical sessions; seminars – student and tutor led; enquiry-based learning opportunities; tutorials; clinical placements.

Assessment methods (includes formative and summative):

Assessment methods include practical examinations; case presentations; report writing; educational packages; clinical placement assessment, conference style presentations.

Graduate Attributes

Graduate Attributes are the personal qualities, skills and understanding that you can develop during your studies. They include being a good communicator, motivator, educator, logical problem solver, team player and evidence-based practitioner but also extend beyond your knowledge of an academic discipline and its technical proficiencies such as:

- A global outlook and recognising the value of meaningful contribution to an interconnected global society and aspire to realise an individual's human rights with tolerance and respect;
- Ethical leadership and understanding of the value of leading and contributing responsibly to the benefit of their chosen professions, as well as local, national and international communities;
- The value of Research and Inquiry that underpin the formulation of well-informed new ideas and a creative approach to problem resolution and entrepreneurial behaviour;
- An openness to new ideas, methods and ways of thinking and the ability to independently reflect on practice so that you may continuously learn and meet the challenges of pursuing excellence.

Graduate Attributes are important because they equip you for the challenge of contributing to your chosen profession and may enable you to take a leading role in shaping the society in which you live and your continuing professional development. The development of Graduate Attributes presumes basic competencies on entry to the University and the programme offers you the opportunity to develop these attributes through successful engagement with the learning and teaching activities and your active participation in University life. The skills, knowledge and personal qualities that underpin the Graduate Attributes are supported by the physiotherapy discipline so that each attribute is enriched, made distinct and expressed through the variety of learning experiences.

Programme Structure

Typical course content

The programme commences in January of each year to coincide with the start of a university semester and students will graduate as a physiotherapist following a period of two years full time study of 47/48 weeks per year. Embedded in the programme are clinical placements of over 1000 hours, making a total of some 96 weeks of study in two years.

Each academic year has been split into four 10 week periods of study with a following two weeks of assessment (quadesters) making 12 weeks in total. Two six-week placements are undertaken at the beginning of the fourth quadmester (July/August) of year 1 where, under supervision, students are expected to actively treat and work with patients (carry a clinical case load). This pattern of academic learning and clinical placements is repeated through the next year with students undertaking 4 more six-week clinical blocks. The clinical placements will be assessed at Intermediate and Honours level in recognition of the fact that students will not achieve mastery in clinical practice. Students will be expected to integrate what they learn during the clinical placements into the university based modules.

The programme will be based on the core areas of physiotherapy and shared learning will take place with the BSc cohort where students will attend lectures and practical sessions together. In addition MSc students will have supplementary case studies that use the guided discovery learning (GDL) principles as the basis for promoting learning through inquiry seminars to extend their knowledge of the subject area and specific MSc learning outcomes. The case studies used for the GDL will become more integrated and complex throughout the programme and will reflect aspects of current clinical practice across all age ranges and areas of physiotherapy practice. Each case will incorporate the foundation sciences which will underpin physiotherapy practice and will promote the use of evidence based practice, reflective thinking and clinical reasoning skills. The programme will also contain aspects of

theory, professional practice and support for the critical Inquiry that culminates in the preparation and presentation of a research project.

In addition to the specific academic learning that facilitate clinical practice, across the 2 years of the programme further research skills, leadership and management and continuing professional development (CPD) are studied alongside preparing students for employment and the future workplace.

Special Features of the programme

This programme involves mandatory placements in all years. The placements are organised by the University and will take place with regional healthcare providers; as such students will need to travel to placements/arrange accommodation.

Cost incurred are reimbursed for students who are in receipt of a bursary (all Department of Health funded courses). Insurance for students on placement and the necessary immunisation/vaccination is provided by the University.

For further information please see <http://www.southampton.ac.uk/alps/>.

The University has a dissecting room (Centre for Learning Anatomical Sciences) and you will have the opportunity to spend time examining cadavers and other anatomical specimens to facilitate your anatomical learning.

The Faculty of Health Sciences has a virtual integrated practice VIP suite which gives you the opportunity to learn some of your clinical skills on Human Patient Simulator Manikins HPSM's and work as you would with a patient in a clinical setting.

Whilst on clinical placement learning is undertaken alongside other healthcare professionals so you can acquire an understanding of the professional role of others in the multi-disciplinary team (MDT).

Programme details

The award of MSc (pre-registration) Physiotherapy with registration is obtained upon completions of a minimum of 90 ECTS credits at level 7.

The programme is divided into study modules of 7.5 and 15 ECTS credits. Each credit represents approximately 25 hours of student learning so a 7.5 credit module will require 187.5 hours of student effort this includes lectures, practical sessions and directed study tasks as well as self-directed learning. A number of core modules are offered in a shared learning capacity with other professional student groups e.g. Occupational Therapy and Podiatry.

The programme is designed so that in excess of 1000 hours of clinical training is achieved on completion of the programme. The emphasis on work-based learning as the primary mechanism for clinical learning is a significant feature on this programme. This has the benefit of allowing students to experience "authentic and fit for purpose" clinical learning, thus further improving employability. This has been achieved through collaboration and an ongoing partnership with Health Education Wessex. Additionally, the innovative structure of the programme incorporates leadership and healthcare innovation modules which align to key government drivers around the future career development of Allied Health Professionals (AHPs).

Successful completion of this programme provides eligibility to apply for registration with the Health and Care Professions Council (HCPC). It is a legal requirement that anyone who wishes to practice using a title protected by the Health Professions Order 2001 is on the HCPC Register. For more information, please see the HCPC website at: www.hcpc-uk.org.uk.

Level	Modules	ECTS Credit Value	Exit Award
6	Foundations and Principles of Physiotherapy Practice	7.5	
7	Introduction to Professional Practice 2	7.5	
7	Critical Inquiry (protocol phase)	7.5	
7	Clinical management and evaluation (1)	7.5	

7	Clinical management and evaluation (2)	15	30 ECTS @ M - PGCert
4	Practice Placement 1	10	
5	Clinical Placement 2	10	
7	Integrated clinical practice and management	15	
5	Practice Placement 3	10	
6	Practice Placement 4	10	
7	Systematic complex clinical practice	7.5	
6	Practice Placement 5	10	
7	Future Professional Practice 2	7.5	60 ECTS @ M - PGDip with (with eligibility for registration)
7	Critical Inquiry	30	90 @ M – ECTS MSc (Physiotherapy)
	TOTAL CREDIT POINTS for level 7	97.5	Master of Science in Physiotherapy (90 ECTS credits) or MSc Health Science if clinical component not completed
	TOTAL CREDIT POINTS for level 5, 6	47.5	
		total =145	

Additional Costs

Students are responsible for meeting the cost of essential textbooks, and of producing such essays, assignments, laboratory reports and dissertations as are required to fulfil the academic requirements for each programme of study. Costs that students registered for this programme typically also have to pay for are included in Appendix 2.

Progression Requirements

The programme follows the University's regulations for [*Progression, Determination and Classification of Results: Undergraduate and Integrated Masters Programmes*](#) as set out in the University Calendar: <http://www.calendar.soton.ac.uk/sectionIV/sectIV-index.html>

This programme is regulated by the Chartered Society of Physiotherapy. In Section 2 of their current *Learning and Development Principles Supplementary information for CSP Accreditation of Qualifying Programmes in Physiotherapy*, the following regulations will apply:

- That there is no condonement or compensation within and between modules.
- All modules are designated as core according to the University regulations.
- *it is not normally permitted that a student can proceed from one year or level of programme to the next without having successfully completed all the pre-requisites for the following year or level*
- *it is not normally possible for a student to be permitted more than two attempts at a unit/module: such a regulation should be applied with discretion, taking account of*
 - *a student's progression through the programme (i.e. a team should keep under review whether a pattern is emerging of a student needing to re-attempt units or modules, with particular attention paid to issues of public protection that an individual's performance may raise, and the practicalities of a student progressing from one unit to another if the need for a second attempt arises)*
 - *extenuating circumstances that may impact on a student's performance."*

Transfer between MSc & BSc pathways

Transfer from a BSc pathway is possible under the following circumstance; a student, who already satisfies the entry requirements for a pre-registration MSc programme may seek to transfer from the BSc pathway during the first semester of their programme. The programme leader/admissions tutor of the MSc pathway will ensure that the student satisfies the entry requirements for the MSc pathway and will arrange an interview with the applicant to ensure that they have the necessary motivation and attributes to undertake the accelerated MSc pathway. The only point of transfer would be immediately prior to the commencement of the MSc programme (normally in January). Students transferring will not

carry any credits forward to the MSc and would be required to successfully undertake all modules and assessments in the MSc pathway in order to achieve the award.

Transfer from an MSc pathway to the BSc pathway is possible for a student who, in the opinion of the programme lead, has the potential to achieve the necessary qualifications that would lead to a licence to practise but who is not able to do so through an MSc pathway. The programme leader/admissions tutor of the BSc pathway will arrange an interview with the applicant to ensure that they have the necessary motivation and attributes to undertake the BSc pathway. Students transferring to the BSc pathway will carry forward credits for any successfully completed modules and previous degree through the RPL process and would be required to re-sit any failed modules. Transfer back to the MSc pathway would then not be possible.

Intermediate exit points

You will be eligible for an interim exit award if you complete part of the programme but not all of it, as follows:

Qualification	Minimum overall credit in ECTS credits	Minimum ECTS Credits required at level of award
MSc Health Studies	90 credits at level 7	75
Postgraduate Diploma in Health Studies	60 credits at level 7	45
Postgraduate Diploma Physiotherapy (with eligibility for registration)	60 credits at level 7 plus all placements	45
Postgraduate Certificate of Health Studies	30 credits at level 7	30

The level of development of the knowledge, understanding and skills is indicated by the learning outcomes detailed below against each of the intermediate exit awards. The maximum length of the programme is normally 4 years for the MSc.

Support for student learning

There are systems available both to support your learning in the Faculty and from the central University

In the Faculty you will be able to access:

- A tutorial system – you will have a personal tutor to take an interest in your whole experience of being a student at the University Southampton.
- Opportunities to learn from a wide range of health professionals including expert physiotherapists and researchers from the field.
- Student handbooks to support campus based studies, clinical/fieldwork and to explain assessment regulations.
- Computer workstations.
- Web-based learning facilities
- Library and study skills packages
- Practical rooms and specialist equipment for student-led learning.
- Centre for Learning Anatomical Sciences to supplement anatomical learning.
- Extensive clinical/fieldwork opportunities.
- Clinical/fieldwork placements have locality contact visits by physiotherapy academic staff to support both you and your placement educators and guide on assessment issues.
- Dedicated clinical/fieldwork academic and administration staff to ensure excellent liaison between the Faculty and the placement locations.
- A student representative system and staff/student liaison committee so that your views on the programme can be heard both during the teaching periods and after the modules are completed.

The University provides:

- library resources, including e-books, on-line journals and databases, which are comprehensive and up-to-date; together with assistance from Library staff to enable you to make the best use of these resources

- high speed access to online electronic learning resources on the Internet from dedicated PC Workstations onsite and from your own devices; laptops, smartphones and tablet PCs via the Eduroam wireless network. There is a wide range of application software available from the Student Public Workstations.
- computer accounts which will connect you to a number of learning technologies for example, the Blackboard virtual learning environment (which facilitates online learning and access to specific learning resources)
- standard ICT tools such as Email, secure file store and calendars.
- access to key information through the MySouthampton Student Mobile Portal which delivers timetables, Module information, Locations, Tutor details, Library account, bus timetables etc. while you are on the move.
- IT support through a comprehensive website, telephone and online ticketed support and a dedicated helpdesk in the Student Services Centre
- Enabling Services offering assessment and support (including specialist IT support) facilities if you have a disability, dyslexia, mental health issue or specific learning difficulties
- the Student Services Centre (SSC) to assist you with a range of general enquiries including financial matters, accommodation, exams, graduation, student visas, ID cards
- Career Destinations, advising on job search, applications, interviews, paid work, volunteering and internship opportunities and getting the most out of your extra-curricular activities alongside your degree programme when writing your CV
- a range of personal support services : mentoring, counselling, residence support service, chaplaincy, health service
- a Centre for Language Study, providing assistance in the development of English language and study skills for non-native speakers.

The Students' Union provides

- an academic student representation system, consisting of Course Representatives, Academic Presidents, Faculty Officers and the Vice-President Education; SUSU provides training and support for all these representatives, whose role is to represent students' views to the University.
- opportunities for extracurricular activities and volunteering
- an Advice Centre offering free and confidential advice including support if you need to make an academic appeal
- Support for student peer-to-peer groups, such as Nightline.

Methods for evaluating the quality of Teaching and Learning

You will have the opportunity to have your say on the quality of the programme in the following ways:

- Completing student evaluation questionnaires for each module of the programme
- Acting as a student representative on various committees, e.g. Staff: Student Liaison Committees, Faculty Programmes Committee OR providing comments to your student representative to feedback on your behalf.
- Serving as a student representative on Faculty Scrutiny Groups for programme validation
- Taking part in programme validation meetings by joining a panel of students to meet with the Faculty Scrutiny Group

The ways in which the quality of the programme is checked, both inside and outside the University, are:

- Regular module and programme reports which are monitored by the Faculty
- Programme validation, normally every five years.
- External examiners, who produce an annual report
- Professional body accreditation/inspection involving the Health and Care Professions Council, Health Education Wessex, employers and peer professionals from the Chartered Society of Physiotherapy.
- A national Research Assessment Exercise (our research activity contributes directly to the quality of your learning experience)
- Institutional Review by the Quality Assurance Agency
- Monitoring of your individual progression through personal tutor and review systems.
- Annual contract monitoring by NHS South Central.
- Annual report to relevant professional bodies.
- Teaching Student reflection and evaluation of practice experience.

Criteria for admission

The University's Admissions Policy applies equally to all programmes of study. The following are the typical entry criteria to be used for selecting candidates for admission. The University's approved equivalencies for the requirements listed below will also be acceptable.

The Faculty welcomes applications from graduates. To be admitted to the MSc Physiotherapy (Pre-registration) programme you will normally need to satisfy the requirements of the University of Southampton, the Chartered Society of Physiotherapy, the Health Professions Council and the Faculty of Health Sciences.

Since you will be working with physically and psychologically vulnerable people, it is important that you should be physically and mentally well on entering the Physiotherapy programme. You will be required to undertake an occupational health screening process and may need to update your immunisation status before going on clinical placement. Disability is not a bar to entry as long as you are capable of working as a physiotherapist. The Health Professions Council will assess your eligibility on completion of the programme.

This course is exempt from the Rehabilitation of Offenders Act, 1960. This means that you will be subject to a check by the Disclosure and Barring Service and any police cautions, civil or criminal convictions will be revealed. You must disclose any police record and discuss it, in confidence, with the programme leader. Having a record will not necessarily debar you from entering the programme.

All students registered for this programme are recommended to join the Chartered Society of Physiotherapy as a student member.

All places are conditional on satisfactory evidence of academic achievement and health and criminal record checks.

Entry Requirements

A sound educational background that will include a recent 2:1 honours degree (or higher). This will have been awarded within the last 3 years in a human biological or behavioural science, sports science or a health related profession in which human sciences, anatomy and physiology were included within the final year of the programme.

In circumstances where the most recent degree was awarded more than three years prior to the application, candidates will need to show evidence that they have been working in the intervening period at an appropriate academic level.

The first degree must also have had a research training component and as part of this candidates will have completed an empirical undergraduate research study from inception to completion, including writing this up.

International applications: IELTS at grade 7.0 with no component below 7 can be offered instead of GCSE English Language.

Qualification	Grade/GPA	Subjects requirements	Specific requirements
Bachelor's degree	2.1 Hons or higher	Human biological or behavioural science, sports science or a health related profession, in which human sciences, anatomy and physiology were included within the final year of the programme	Successful applicants will be subject to Disclosure and Barring Service checks

Mature applicants

Applicants must provide evidence of recent formal study. Successful applicants must satisfy the Programme Leader that they are competent to pursue the programme. The right to refuse permission shall be reserved to the Programme Leader.

Recognition of Prior Learning (RPL)

The University has a [Recognition of Prior Learning Policy](#). Applications for recognition of prior learning will be considered on a case by case basis.

English Language Proficiency

Overall	Reading	Writing	Speaking	Listening
7.0	7.0	7.0	7.0	7.0

Career Opportunities

Physiotherapy is a rewarding field, which involves understanding and practising the science behind human movement.

This MSc (pre-registration) in physiotherapy gives you everything you need to make a solid start to your career.

Upon graduating you are most likely to find employment within the National Health Service. However, there are also job opportunities in private practice, the armed forces, sport and industry. This is due in part to our widely held reputation as a centre for learning excellence. More information about careers in physiotherapy can be found on the NHS Careers website

External Examiner(s) for the programme

Name Mr Barry Pryer

Institution University of Essex

Students must not contact External Examiner(s) directly, and external examiners have been advised to refer any such communications back to the University. Students should raise any general queries about the assessment and examination process for the programme with their Course Representative, for consideration through Staff: Student Liaison Committee in the first instance, and Student representatives on Staff: Student Liaison Committees will have the opportunity to consider external examiners' reports as part of the University's quality assurance process.

External examiners do not have a direct role in determining results for individual students, and students wishing to discuss their own performance in assessment should contact their personal tutor in the first instance.

Please note: This specification provides a concise summary of the main features of the programme and the learning outcomes that a typical student might reasonably be expected to achieve and demonstrate if s/he takes full advantage of the learning opportunities that are provided. More detailed information can be found in the programme handbook (or other appropriate guide) or online at http://www.southampton.ac.uk/healthsciences/postgraduate/taught_courses/msc_physiotherapy.page?.

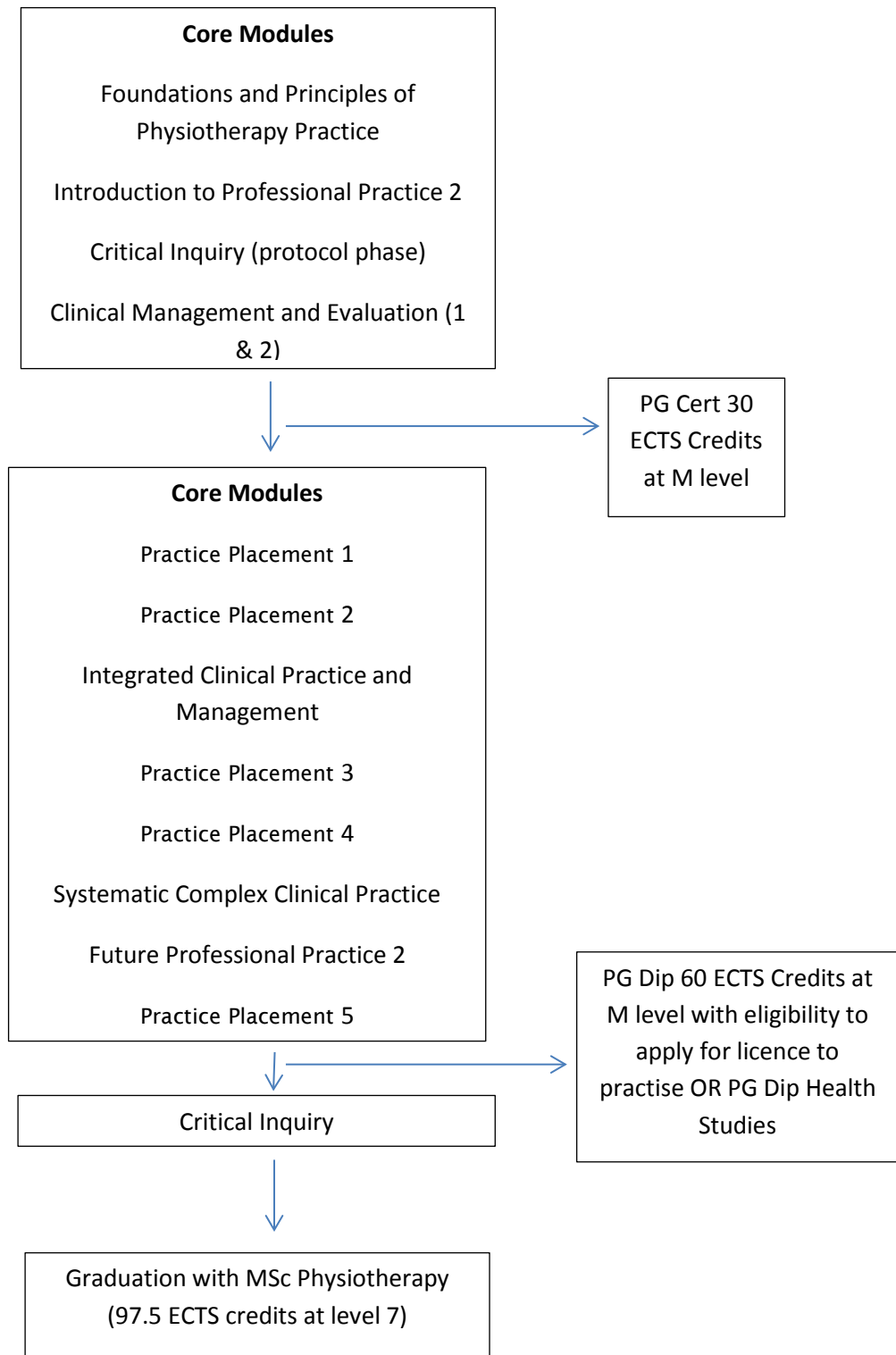
Appendix 1: Learning outcomes and Assessment Mapping document template

Module Code	Module Title	Professional Expectations				Application of Practice				Knowledge and Skills	
		A 1	A 2	A 3	A 4	B 1	B 2	B 3	B 4	C 1	C 2
	Introduction to Professional Practice 2	X								X	
	Critical Inquiry (protocol phase)	X			X				X		X
	Foundations and Principles of Physiotherapy Practice	X		X		X	X	X	X	X	X
	Clinical Management and Evaluation 1	X		X		X	X	X	X		X
	Clinical Management and Evaluation 2	X		X		X	X	X	X		X
	Practice Placement 1	X	X	X	X	X	X	X	X	X	X
	Practice Placement 2	X	X	X	X	X	X	X	X	X	X
	Self-directed Critical Inquiry										
	Practice Placement 3	X	X	X	X	X	X	X	X	X	X
	Practice Placement 4	X	X	X	X	X	X	X	X	X	X
	Integrated Clinical Practice and Management	X		X		X	X	X	X	X	X
	Systematic Complex Clinical Practice	X		X		X	X	X	X	X	X
	Future Professional Practice 2	X								X	X
	Practice Placement 5	X	X	X	X	X	X	X	X	X	X

Assessment Methods

Module Code	Module Title	Exam
	Introduction to Professional Practice 2	Health Education Package & Presentation
	Critical Inquiry (protocol phase)	Completion of protocol required for progression to year 2 of programme.
	Foundations and Principles of Physiotherapy Practice	Presentation, Viva and Extended matching question format 100%
	Clinical Management and Evaluation 1	Neurology, CVR, Neuromusculoskeletal Observed Structured Clinical exam 100%
	Clinical Management and Evaluation 2	Neurology, CVR, Neuromusculoskeletal Observed Structured Clinical exam and Case Study 100%
	Practice Placement 1	Assessment in Practice 100%
	Practice Placement 2	Assessment in Practice 100%
	Critical Inquiry	Completion of Research Paper, Project File, Log book & Conference Presentation
	Practice Placement 3	Assessment in Practice 100%
	Practice Placement 4	Assessment in Practice 100%
	Integrated Clinical Practice and Management	Reflective Essay 100%
	Systematic Complex Clinical Practice	Presentation 40% Viva 60%
	Future Professional Practice 2	3,000 word case study 100%
	Practice Placement 5	Assessment in Practice 100%

Physiotherapy Programme Structure



Appendix 2 (MSc Physiotherapy (Pre-registration)):

Additional Costs

Students are responsible for meeting the cost of essential textbooks, and of producing such essays, assignments, laboratory reports and dissertations as are required to fulfil the academic requirements for each programme of study. In addition to this, students registered for this programme typically also have to pay for the items listed in the table below.

In some cases you'll be able to choose modules (which may have different costs associated with that module) which will change the overall cost of a programme to you. Details of such costs will be listed in the Module Profile. Please also ensure you read the section on additional costs in the University's Fees, Charges and Expenses Regulations in the University Calendar available at www.calendar.soton.ac.uk.

Main Item	Sub-section	PROGRAMME SPECIFIC COSTS
Approved Calculators		Candidates may use calculators in the examination room only as specified by the University and as permitted by the rubric of individual examination papers. The University approved models are Casio FX-570 and Casio FX-85GT Plus. These may be purchased from any source and no longer need to carry the University logo.
Stationery		You will be expected to provide your own day-to-day stationary items, e.g. pens, pencils, notebooks, etc). Any specialist stationery items will be specified under the Additional Costs tab of the relevant module profile.
Textbooks		Where a module specifies core texts these should generally be available on the reserve list in the library. However due to demand, students may prefer to buy their own copies. These can be purchased from any source. Some modules suggest reading texts as optional background reading. The library may hold copies of such texts, or alternatively you may wish to purchase your own copies. Although not essential reading, you may benefit from the additional reading materials for the module.
Equipment and Materials Equipment	Laboratory Equipment and Materials:	<i>Physiotherapy suggested generic statement:</i> A number of essential items for use in the Centre for learning Anatomical Sciences will be provided to you e.g.: safety goggles; examination gloves; plastic aprons. Please see clothing below.
	Medical Equipment and Materials: Fobwatch; stethoscopes;	A number of essential items for use in practical sessions will be provided to you e.g.: goniometers; tape measures; electrotherapy consumables; examination gloves; plastic aprons. However you will need provide yourselves with a fob watch; stethoscope (advice will be given at the appropriate time regarding which models) for use in the practical classes and whilst on clinical placement.

Main Item	Sub-section	PROGRAMME SPECIFIC COSTS
Clothing	Lab Coats	Re: laboratory equipment above, you will need provide yourselves with laboratory coat for use in the Centre for learning Anatomical Sciences. These can be purchased from any source.
Printing and Photocopying Costs		In the majority of cases, coursework such as essays; projects; dissertations is likely to be submitted on line. However, there are some items where it is not possible to submit on line and students will be asked to provide a printed copy. A list of the University printing costs can be found here: http://www.southampton.ac.uk/isolutions/services/copying_for_students_and_visitors/faq.php#594
Clinical Placement: logistical costs	Accommodation:	<p>This programme involves mandatory placements in all years. The placements are organised by the University and will take place with regional healthcare providers; as such students will need to travel to placements/arrange accommodation. Costs incurred are reimbursed for students who are in receipt of a bursary (all Department of Health funded courses). Insurance for students on placement and the necessary immunisation/vaccination is provided by the University.</p> <p>For further information please see http://www.southampton.ac.uk/alps/</p>
	Insurance	<p>This programme involves mandatory placements in all years. Insurance for students on placement and the necessary immunisation/vaccination is provided by the University.</p> <p>For further information please see http://www.southampton.ac.uk/alps/</p>
	Travel costs	<p>This programme involves mandatory placements in all years. The placements are organised by the University and will take place with regional healthcare providers; as such students will need to travel to placements/arrange accommodation. Costs incurred are reimbursed for students who are in receipt of a bursary (all Department of Health funded courses).</p> <p>For further information please see http://www.southampton.ac.uk/alps/</p>
	Immunisation/vaccination costs	<p>This programme involves mandatory placements in all years. Insurance for students on placement and the necessary immunisation/vaccination is provided by the University.</p> <p>For further information please see http://www.southampton.ac.uk/alps/</p>
Placements (including Study Abroad Programmes)	Accommodation	If you have been approved to participate in an Erasmus+ Study/Work Placement you will automatically qualify for an Erasmus+ grant and details of this will be sent to you as part of the application process. Students who participate in the Erasmus+ scheme can benefit from an EU-funded grant. It is not intended to be a maintenance grant but rather a contribution towards the extra costs associated with studying

Main Item	Sub-section	PROGRAMME SPECIFIC COSTS
		abroad. The International Office will calculate your grant for you once you have given them the dates of your placement. You will be sent an Erasmus Grant Agreement confirming the amount of your grant and conditions of participation.
	Insurance	Students who participate in the Erasmus+ scheme can benefit from insurance that is provided by the university.
Conference expenses	Accommodation	Conference attendance is not normally expected as part of the Physiotherapy programme. If you decide to attend conferences then you will normally be expected to cover the cost of accommodation, travel and admission.
	Travel	Conference attendance is not normally expected as part of the Physiotherapy programme. If you decide to attend conferences then you will normally be expected to cover the cost of accommodation, travel and admission.
Optional Visits		Some Physiotherapy modules may include optional visits to specialist healthcare facilities, etc. You will normally be expected to cover the cost of travel and admission, unless otherwise specified in the module profile.