

➤ **Find out more:**
www.southampton.ac.uk/visit

UK enquiries:
visit@southampton.ac.uk
+44 (0)23 8059 9699

EU and International enquiries:
international@southampton.ac.uk
+44 (0)23 8059 9699



Disclaimer

This document is for information purposes only and is prepared well in advance of publication. While the University of Southampton uses all reasonable efforts to ensure that all statements, information and data contained in this document are accurate as at the date of publication, it reserves the right to make revisions or modifications to such statements, information or data at any time and without notice. Under no circumstances shall the University be liable for any reliance by the reader on any information in this document.

© University of Southampton 2019

This document can be made available, on request, in alternative formats such as electronic, large print, Braille or audio tape, and in some cases, other languages.



When finished with this document please recycle it.



WORLD
LAND
TRUST™

www.carbonbalancedpaper.com
XXXXXXXXXX

UNIVERSITY OF
Southampton

EXPLORE YOUR NEW WORLD

OPEN DAY PROGRAMME
OCTOBER 2019

STUDENT
AMBASSADOR

Happy to help

FOUNDING
MEMBER OF THE

RUSSELL
GROUP

Top 20

in the UK*



Top 100

globally**



Silver award

for teaching excellence***



Download the app

Search 'MySouthampton'
in your app store



Follow us on social media

Search #UoSOpenDay

* Complete University Guide, 2020

** QS World University Rankings, 2019

*** Teaching Excellence and Student Outcomes Framework (TEF) rating, 2018

UNIVERSITY OF
Southampton

WELCOME

CONTENTS

- 04 Plan your day
- 05 Explore and enjoy
- 06 Campus developments
- 07 Open Day shuttle buses
- 08 Information Fair
- 10 General events
- 12 Subject events
- 22 Explore the city
- 23 Students' Union
- 24 Accommodation
- 26 Highfield Campus map
- 28 Campus maps
- 30 Catering facilities
- 31 Your planner



As Vice-President (Education), Professor of Philosophy and an alumnus, I'd like to offer you a very warm welcome to the University of Southampton.

Over the course of your Open Day visit, do take time to soak up the sights and sounds not only of our University, but also of our bustling, diverse and historic city.

Today is all about you: about the journey you'll take through the rest of your education and beyond to develop and achieve your goals. This is your chance to find out what joining us at Southampton for the next stage of that journey could offer you.

It's your opportunity to engage with our students and academics, hear about our teaching and research, and learn more about the support we offer to our students; how we strive to provide them with the best possible University experience, while also preparing them for life after graduation.

Today will provide a glimpse of what your future could hold. Reflect on your experience and ask the question: "Can I see myself here at Southampton?"

It's my sincere hope that you'll be able to answer with a resounding "Yes."

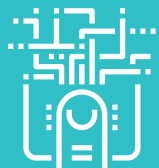
Professor Alex Neill
Vice-President (Education)

PLAN YOUR DAY

At our Open Days, we aim to give you a glimpse of what your life at Southampton could be like. The Open Day is the first step on your university journey; use our top tips to help you get the most from your day.

Download the app

Create your schedule for the day using our free Open Day app. Search 'MySouthampton' in your app store.



Check in

When you have a chance, head to one of our check-in points and get your ticket scanned. This lets us know you've attended the Open Day. There are check-in points on Highfield Campus, Boldrewood Innovation Campus, Avenue Campus and at the National Oceanography Centre Southampton.

See the city

Make the most of your day by visiting Southampton city centre on one of our regular shuttle buses. You can take a tour of the city, enjoy something to eat and drink, see a show at the Mayflower Theatre or catch the latest exhibition at our city centre-based arts venue, the John Hansard Gallery. Or, if you don't have time to visit, stop by our 360-degree virtual city experience room in the Information Fair.

Take a break

There are many places to grab something to eat or drink on each of our campuses, with special deals for our Open Day visitors.



Follow us on social media

Find us online and join the conversation with #UoSOpenDay.

Visit our Information Fair

Between 09:00 and 16:00 you can speak to representatives from subject areas, clubs and societies, and the services that will support you as a Southampton student. To find out more, see page 8.



Attend a subject talk

Subject talks run throughout the day. They provide information about what it's like to study here at Southampton and what modules you can take. You will also have the opportunity to ask questions about your chosen area of study (see pages 12–21 for talk times).



Take a tour

A guided campus tour is the best way to see the facilities on Highfield Campus. Tours are led by our student ambassadors, who will give real insight into life at Southampton (see page 11).



Go online

Use the free Wi-Fi on campus: select 'Wifi Guest' and follow the instructions.



Please note that filming and photography will be taking place at the Open Days for use in University publications and on the University website. If you do not wish to be included, please let the film crew or photographer know.

EXPLORE AND ENJOY

The Open Day is your chance to get a real feel for the University and imagine yourself living and learning here. Explore the campuses, enjoy the many green spaces and social areas, and soak up the atmosphere. Here are a few highlights to look out for while you're here.

Enjoy a lunchtime concert performed by our talented music students.



Lunchtime concerts

Join us at lunchtime for a concert by our Southampton Showcase performers in Building 52 (Turner Sims). Showcase is a platform providing exposure to the talented pre-professional student performers within our Music department. Taking place from 12:30-13:10, our lunchtime concert will feature an eclectic mix of performances for you to enjoy. Stay for the whole concert or just drop in for a while – and don't forget to bring your lunch!

Cafes and restaurants

Take a break and enjoy a coffee or lunch at one of our many restaurants and cafes located across our campuses.

Sports talks

If sport is your thing, head over to Building 34 for one of our talks about the excellent sporting facilities available here at Southampton. We cater for all levels – so whether you're a sporting professional or just enjoy an occasional keep fit class, there will be something for you.

360-degree experience of the city

Don't have time to head to the city on the Open Day? Experience the city of Southampton by visiting our 360-degree virtual experience room, located within the City Life Zone of the Information Fair.

Filmed across 12 locations, with a soundtrack created by our music students, this will give you a feel for what our vibrant city has to offer.

Virtual Open Day

Remember, if you don't have chance to see everything during the Open Day, you can explore all our campuses at your leisure with our Virtual Open Day: www.southampton.ac.uk/virtualopenday



CAMPUS DEVELOPMENTS

We are continuously updating our campuses and investing in your student experience.

Our new teaching and learning centre on Highfield Campus, the Centenary Building, is due to open this autumn. This space will feature a 250-seat lecture theatre, a range of adaptable group teaching spaces, a computer suite, a cafe and a variety of study areas.

Our National Infrastructure Laboratory on Boldrewood Innovation Campus opened last month. This purpose-built facility houses state-of-the-art research laboratories to develop our understanding of transport infrastructure. It is supported by £36m of government investment as part of a national partnership.

We are also investing £12m in our chemistry facilities, including a complete renovation of our teaching labs. Students will benefit from modern teaching spaces and more opportunities for experimental work and hands-on use of advanced analytical and spectroscopic equipment.

Our newly transformed facilities for Health Sciences and Electronics and Computer Science (ECS) also ensure you have the resources and spaces you need.

- 01 National Infrastructure Laboratory
- 02 Centenary Building (artist's impression)
- 03 Chemistry laboratories (artist's impression), Building 29
- 04 Electronics and Computer Science facilities, found in Building 1 and Building 16



Find out more:
www.southampton.ac.uk/building-projects

OPEN DAY SHUTTLE BUSES

During the Open Day you can enjoy unlimited travel between our Southampton campuses on our free shuttle bus service.

Show your Open Day ticket, programme, or the app for free travel on our shuttle buses and unilink services.

You can get on one of our buses at Westquay and, depending on the course you're interested in, go straight to Highfield Campus, Avenue Campus, Boldrewood Innovation Campus or the National Oceanography Centre Southampton.

If the talks and events you're interested in attending are at one of our other campuses, there's no need to go to Highfield Campus first; you can build your day around your interests and

visit the campuses in the most convenient order for you.

Our award-winning unilink bus service connects our Southampton campuses with the city's major transport links. Our student ambassadors will be happy to provide you with directions onto the correct bus.

Please allow plenty of time for transfers between the campuses, halls of residence and from Westquay, and local public transport terminals.

Keep checking our website for the latest travel information.

APPROXIMATE TRANSFER TIMES

WESTQUAY TO:

Avenue Campus	20 minutes
Boldrewood Innovation Campus	25 minutes
Highfield Campus	35 minutes
National Oceanography Centre	15 minutes

SOUTHAMPTON CENTRAL TRAIN STATION TO:

Avenue Campus	15 minutes
Boldrewood Innovation Campus	20 minutes
Highfield Campus	25 minutes
National Oceanography Centre	20 minutes

HIGHFIELD CAMPUS TO:

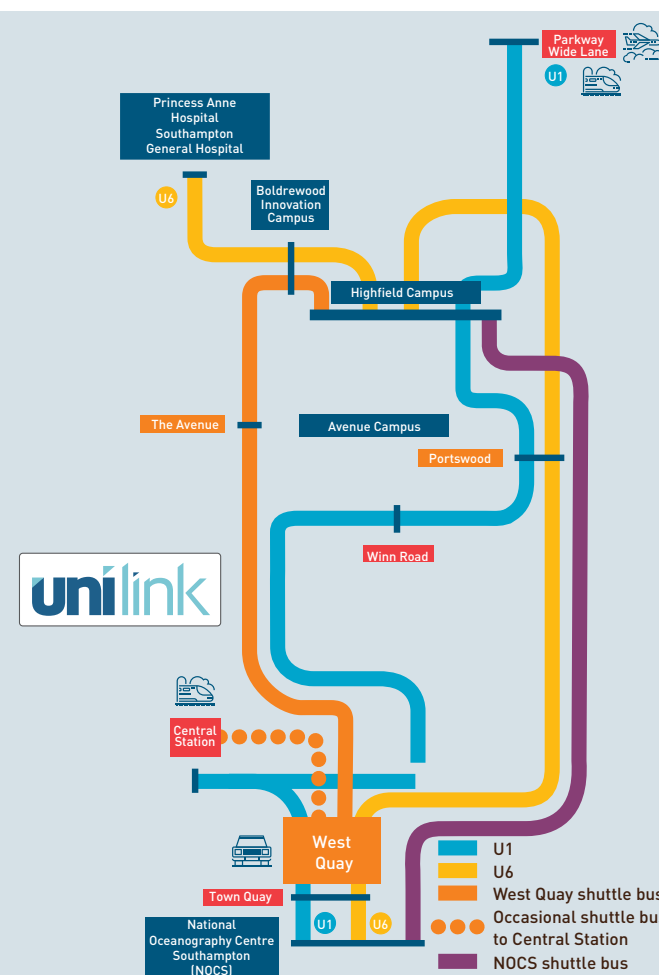
Avenue Campus	10 minutes
Boldrewood Innovation Campus	5 minutes
National Oceanography Centre	45 minutes

AIRPORT/PARKWAY TRAIN STATION TO:

Avenue Campus	40 minutes (One change at Highfield Campus)
Boldrewood Innovation Campus	35 minutes (One change at Highfield Campus)
Highfield Campus	20 minutes
National Oceanography Centre	1 hour 10 minutes (One change at Highfield Campus)

ACCESSIBLE ROUTES

There will be a limited number of wheelchairs available at the information point at the interchange, on Highfield Campus (next to Building 6) – please enquire here. Wheelchair routes and disabled toilets are indicated on our campus maps (pages 26-29).



INFORMATION FAIR



The Information Fair is at the heart of your Open Day. Here you will find representatives from subject areas, support services, the city and some of our clubs and societies. Make sure you allow time to head over, check in and get all of your questions answered.

The Information Fair takes place in Building 18 (Jubilee Sports Centre) on Highfield Campus, and will be open between 09:00 and 16:00.

Subject zone

Within this zone you will be able to find out about your subject of interest. You will get the chance to speak to current students or members of staff.

Student support zone

Here you can speak to representatives from the services that will support you from application to graduation. Get

help with your application, receive funding advice and find out where your Southampton degree could take you.

If you have any specific requirements and think you might need support during your studies, visit the Enabling Services stand where the team will be happy to answer any questions you have.

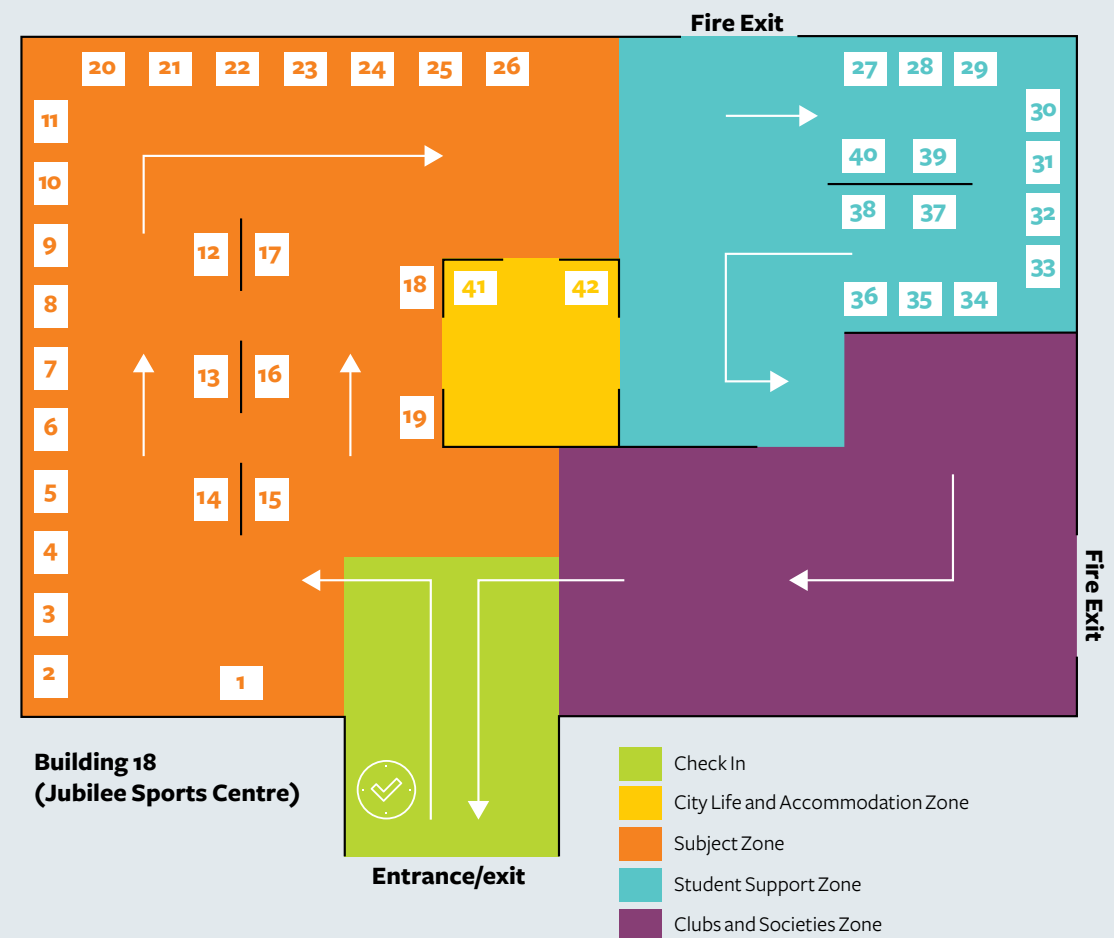
Clubs and societies zone

This zone gives you the opportunity to get a feel for our student clubs and societies. There are over 300 different groups to choose from.

Whether you love sport, volunteering, performing or debating, there's something for everyone; this could be your chance to try something new.

City life and accommodation zone

Speak to our Accommodation team to find out where you could be living as a Southampton student. You can also find out more about what the city of Southampton has to offer with our 360-degree virtual experience room.



STAND NUMBER

- | | | |
|--|--|--|
| 1 Medicine | 13 Geography | 27 Extended Project Qualification (EPQ) |
| 2 Audiology | 14 Health Sciences (including Physiotherapy, Podiatry, Occupational Therapy, Cardiac Physiology (Healthcare Science) and Nursing and Midwifery) | 28 Southampton Language Opportunity |
| 3 Biochemistry, Biomedical Sciences, Pharmacology, Neuroscience | 15 Psychology | 29 Year in Industry |
| 4 Biology, Ecology and Conservation, Zoology | 16 Anthropology, Sociology, Social Policy and Criminology | 30 Careers and employability |
| 5 Natural Sciences | 17 Mathematical Sciences | 31 Studying abroad |
| 6 Environmental Science | 18 Economics | 32 University IT Services |
| 7 Marine Biology, Oceanography | 19 Education | 33 Student Inclusion |
| 8 Geology and Geophysics | 20 Physics and Astronomy | 34 Funding your future |
| 9 Chemistry | 21 Engineering/Physics/Maths/Geophysics Foundation Year | 35 Student Life |
| 10 Engineering (including Acoustical Engineering, Aeronautics and Astronautics, Civil Engineering, Mechanical Engineering and Ship Science) | 22 Population and Geography | 36 Enabling Services |
| 11 Electronics and Computer Science | 23 Business | 37 Faith and Reflection Centre |
| 12 Politics and International Relations | 24 Law | 38 Committed to sustainability |
| | 25 Humanities | 39 Arts at University of Southampton |
| | 26 Winchester School of Art | 40 Library |
| | | 41 Accommodation |
| | | 42 City experience (360-degree virtual experience room) |



GENERAL EVENTS

TALKS	TIMES	DURATION	LOCATION*
Welcome to the University of Southampton: Your chance to hear from our Vice-President about what makes Southampton a special place to live and study	09:00 09:30 10:15 10:45 13:15	30 minutes	Building 100, Lecture Theatre 1001
Accommodation	12:15 13:45 15:15	30 minutes	Building 42 (the Students' Union), Level 3, cinema
	10:30 11:30 12:45 14:15	30 minutes	Glen Eyre Halls of Residence, Glen Eyre Road, Dining Hall
Fees and finance	11:00 13:00 14:00	45 minutes	Building 40, Garden Court
Experience a university lecture by a leading academic	12:00	40 minutes	Avenue Campus, Building 65, Room 1145
	13:30	40 minutes	Building 6 (Nuffield), Room 1081
Sport at Southampton	13:15 14:15	30 minutes	Building 34, Lecture Theatre 3001
Studying abroad information session	13:30	45 minutes	Building 6 (Nuffield), Lecture Theatre A
Student life with the Students' Union: The Union's elected student officers will welcome you to campus with an essential guide to student life. Expect to hear an overview of everything the Union offers, with information about halls, support services, nightlife and much more	10:00 11:30 14:30	30 minutes	Building 42 (the Students' Union), Level 3, cinema
Personal statement: top tips	09:15 10:00 11:00 12:00 13:00 14:00 15:00	30 minutes	Building 35, Lecture Theatre 1001

*Location is on Highfield Campus unless otherwise specified

DROP IN	TIMES	LOCATION*
Faith and Reflection Centre: Find out what support and activities we offer throughout the academic year. Come and enjoy our hospitality or just take a break in a quiet space	10:00–16:00	Faith and Reflection Centre, House 41
Southampton Showcase: An informal concert featuring some of the talented musicians from the University of Southampton Department of Music	12:30–13:10	Building 52 (Turner Sims)
The Students' Union: drop in for a chance to discover the opportunities the Students' Union has to offer, including information about sports clubs, societies, advice, socialising and representation. This is your chance to ask current students and elected officers anything you are unsure about, while discovering the facilities with a Union tour	09:00–16:00	Building 42 (the Students' Union)

TOUR	DESCRIPTION	TIMES	LOCATION*
Highfield Campus	Led by a current student, see the sights and amenities of our main campus, and get an insight into what your life would be like as a student at Southampton. These tours take around 30 minutes and are on foot	10:00–16:00	Marquee on the grass outside Building 38
Hartley Library	Our libraries will be an important part of your time here as a student. Explore our main University Library and see our study spaces and print resources. An opportunity to talk to Library staff and ask questions about resources and services, and how the Library can support you in your studies. Take a self-guided walk around all five floors and see inside this amazing building	09:00–16:00	Building 12 (Hartley Library)
Jubilee Sports Centre	Take a look around our onsite sports centre which houses a 25-metre swimming pool and a 170 station fitness suite. These tours are self-guided; follow the footsteps from the Sports Centre main reception	09:00–16:00	Building 18 (Jubilee Sports Centre)
Students' Union	Led by the Students' Union team, discover how the University of Southampton Students' Union can enrich your student experience. Check out the cinema, sports facilities, media studios, sports bar, lettings agency and more	09:00–16:00	Building 42 (the Students' Union)
Glen Eyre Halls	Take a self-guided stroll around our largest accommodation site, and see examples of self-catered non-en suite and en suite rooms you might like to live in as a student. Staff and student helpers will be available onsite so you can find out more about the student accommodation experience. Follow the yellow signage from the top of University Road. Please note that the walk to Glen Eyre takes around 15 minutes	10:00–16:00	Glen Eyre Halls of Residence, Glen Eyre Road
Mayflower Halls	Take a self-guided tour around our larger inner city halls site, located in the heart of Southampton's Cultural Quarter. View examples of modern self-catered en suite accommodation that could be your new home as a student. Staff and student helpers will be available onsite so you can find out more about the student accommodation experience. Catch a free bus from the interchange at Highfield Campus to Southampton Central train station, and follow the yellow signage to Mayflower Halls. Please allow around 30 minutes' travel time	12:00–17:00	Mayflower Halls of Residence, West Park Road

SUBJECT EVENTS

DETAILS	TIME	DURATION	LOCATION*
ACCOUNTING AND FINANCE			
Subject talk	11:30 13:30	40 minutes	Building 2, Level 3, Room 3043
Explore how the Bloomberg Terminal brings together real-time market data, breaking news and powerful analytics	09:30–16:30	30 minutes	Building 58 (Murray), Level 1, Room 1053, Bloomberg Trading Suite
ACOUSTICAL ENGINEERING			
Subject talk	11:00 13:15	45 minutes	Building 19, Level 3, Room 3011
Talk: Which engineering subject should I study? Find out about our engineering subjects and choose the right one for you	09:45 11:15 12:30 13:45	40 minutes	Boldrewood Innovation Campus, Building 176, Level 1, with live webcast to Building 5 (Eustice), Level 2
Drop in and guided tour	10:00–16:00	45 minute tour (approx)	Building 19, Level 3, Room 3011
Drop in (alternative at Boldrewood Campus)	10:00–16:00		Boldrewood Innovation Campus, Building 177, Level 3
Actuarial Science: For Mathematics with Actuarial Science see Mathematics. For Economics and Actuarial Science see Economics			
AERONAUTICS AND ASTRONAUTICS			
Subject talk	10:45 12:45 14:45	45 minutes	Building 7 (Lanchester), Level 3, Lecture Theatre A
Talk: Which engineering subject should I study? Find out about our engineering subjects and choose the right one for you	09:45 11:15 12:30 13:45	40 minutes	Boldrewood Innovation Campus, Building 176, Level 1, with live webcast to Building 5 (Eustice), Level 2
Drop in	10:00–16:00		Boldrewood Innovation Campus, Building 177, Level 3
Visit engineering facilities at Highfield Campus	10:00–16:00		Details (including map) available from Building 18 Information Fair, Building 13 Information Point and Boldrewood Innovation Campus Information Point, Building 177
Visit engineering facilities at Boldrewood Innovation Campus	10:00–16:00		
Aerospace Electronic Engineering: See Electrical and Electronic Engineering			
ANCIENT HISTORY			
Subject talk	13:15	45 minutes	Avenue Campus, Building 65, Lecture Theatre C
Tour of Avenue Campus	10:00–15:45 (departing every 15 minutes)	20 minutes	Avenue Campus, Building 65, Main Reception
Drop in	10:00–16:00		Avenue Campus, Building 65, Room 1173
Study abroad opportunities	10:00–16:00		Avenue Campus, Building 65, North Corridor

DETAILS	TIME	DURATION	LOCATION*
ANTHROPOLOGY			
Subject talk	13:30	45 minutes	Building 58 (Murray), Murray Lecture Theatre
ARCHAEOLOGY			
Subject talk and tour	11:15 14:15	75 minutes (45 minute talk, 30 minute tour)	Avenue Campus, Building 65, Lecture Theatre C
Tour of Avenue Campus	10:00–15:45 (departing every 15 minutes)	20 minutes	Avenue Campus, Building 65, Main Reception
Drop in	10:00–16:00		Avenue Campus, Building 65, Room 1177
Study abroad opportunities	10:00–16:00		Avenue Campus, Building 65, North Corridor
Demonstration	10:00–16:00		Avenue Campus, Building 65, lawn
AUDIOLOGY			
Subject talk	10:30	45 minutes	Building 13 (Tizard), Level 3
Guided tour and demonstrations	11:30	60 minutes	Building 13 (Tizard), Level 4
Drop in	11:00–13:30		Building 13 (Tizard), Level 4
BIOLOGICAL SCIENCES			
<i>(includes Biology, Biochemistry, Biomedical Sciences, Ecology and Conservation, Neuroscience, Pharmacology and Zoology)</i>			
Subject talk	10:45 13:15	50 minutes	Building 32, Level 1, Lecture Theatre
Drop in	10:00–16:00		Building 85, Room 2207
Biological Sciences lab demonstrations	10:00–16:00		Building 85, Room 1021
<i>Biomedical Electronic Engineering: See Electrical and Electronic Engineering</i>			
BUSINESS			
<i>(includes Business Management, Business Analytics and Business Entrepreneurship)</i>			
Subject talk	10:30 12:45	40 minutes	Building 2A, Lecture Theatre H
Explore how the Bloomberg Terminal brings together real-time market data, breaking news and powerful analytics	09:30–16:30	30 minutes	Building 58 (Murray), Level 1, Room 1053, Bloomberg Trading Suite
CARDIAC PHYSIOLOGY (HEALTHCARE SCIENCE)			
Subject talk	10:15* 13:15** 14:45*	30 minutes	*Building 67, Level 1 **Building 67, Level 2
Drop in	09:00–16:00		Building 67, Level 2
Admissions help desk	10:00–15:00		Building 67, Level 2
Placement zone	10:00–15:00		Building 67, Level 2

■ ARTS AND HUMANITIES
 ■ SCIENCE AND MATHEMATICS
 ■ ENGINEERING AND COMPUTING
 ■ SOCIAL SCIENCES AND EDUCATION
 ■ BUSINESS AND LAW
 ■ EARTH AND ENVIRONMENTAL SCIENCE
 ■ MEDICINE AND HEALTHCARE SCIENCE
 ■ FOUNDATION YEARS

*Location is on Highfield Campus unless otherwise specified

DETAILS	TIME	DURATION	LOCATION*
CHEMISTRY			
Subject talk	10:30 11:00 11:30 12:00 13:00 14:00	30 minutes	Details available from Building 18 Information Fair and Building 30 Reception area
Department tour	10:00–15:00	30 minutes	Details available from Building 18 Information Fair. Leaves from Chemistry Common Room (Building 29/2067) every 15 minutes
Drop in	09:45–16:00		Details available from Building 18 Information Fair, Chemistry staff and students (Common Room 29/2067)
CIVIL ENGINEERING			
Subject talk	10:30 12:00 14:00	45 minutes	Boldrewood Innovation Campus, Building 178, Level 2
Talk: Which engineering subject should I study? Find out about our engineering subjects and choose the right one for you	09:45 11:15 12:30 13:45	40 minutes	Boldrewood Innovation Campus, Building 176, Level 1, with live webcast to Building 5 (Eustice), Level 2
Drop in	10:00–16:00		Boldrewood Innovation Campus, Building 178, Level 2
Visit engineering facilities at Highfield Campus	10:00–16:00		Details (including map) available from Building 18 Information Fair, Building 13 Information Point and Boldrewood Innovation Campus Information Point, Building 177
Visit engineering facilities at Boldrewood Innovation Campus	10:00–16:00		
COMPUTER SCIENCE AND SOFTWARE ENGINEERING			
Overview of degrees in electronics and computer science	10:30 14:30	50 minutes	Building 52, Turner Sims
Talk: Which engineering subject should I study? Find out about our engineering subjects and choose the right one for you	09:45 11:15 12:30 13:45	40 minutes	Boldrewood Innovation Campus, Building 176, Level 1, with live webcast to Building 5 (Eustice), Level 2
Taster lecture (topics available at Building 53 welcome desk)	11:00 12:30 13:30 14:30	30 minutes	Building 2A, Arts Annex, Lecture Theatre J
Careers and employability talk	12:00 13:00 14:00	30 minutes	Building 53 (Mountbatten), Level 4, Room 4025
Computing lab tour	09:30 10:00 10:30 11:00 11:30 12:00 13:00 13:30 14:00 14:30 15:00 15:30	30 minutes	Building 53 (Mountbatten), entrance foyer
Welcome desk and drop in	10:00–16:00		Building 53 (Mountbatten), entrance foyer
Visit Future Worlds, the University of Southampton’s on-campus startup accelerator, helping aspiring student and staff entrepreneurs change the world with their ideas	11:00 11:30 12:00 12:30 13:00 13:30 14:00 14:30	30 minutes	Building 53 (Mountbatten), entrance foyer

DETAILS	TIME	DURATION	LOCATION*
CRIMINOLOGY			
Subject talk	10:00 (Saturday only) 12:30	45 minutes	Building 58 (Murray), Murray Lecture Theatre
<i>Ecology and Conservation: see Biological sciences</i>			
ECONOMICS			
Subject talk	10:00 12:00 14:00	45 minutes	Building 2, Level 1, Room 1089
Explore how the Bloomberg Terminal brings together real-time market data, breaking news and powerful analytics	09:30–16:30	30 minutes	Building 58 (Murray), Level 1, Room 1053, Bloomberg Trading Suite
EDUCATION/EDUCATION AND PSYCHOLOGY			
Subject talk	12:00	60 minutes	Building 34 (Education), Lecture Theatre 3001
ELECTRICAL AND ELECTRONIC ENGINEERING			
<i>(includes Aerospace Electronic Engineering, Biomedical Electronic Engineering, Electrical Engineering, Electronic Engineering and Mechatronic Engineering)</i>			
Overview of degrees in electronics and computer science	10:30 14:30	50 minutes	Building 52, Turner Sims
Talk: Which engineering subject should I study? Find out about our engineering subjects and choose the right one for you	09:45 11:15 12:30 13:45	40 minutes	Boldrewood Innovation Campus, Building 176, Level 1, with live webcast to Building 5 (Eustice), Level 2
Taster lecture (topics available at Building 53 welcome desk)	11:00 12:30 13:30 14:30	30 minutes	Building 2A, Arts Annex, Lecture Theatre J
Differences between Electronic/Electrical specialisms	11:30 13:30	30 minutes	Building 53 (Mountbatten), Level 4, Room 4025
Biomedical Electronic Engineering: subject talk and lab tour	11:30 12:30 13:30 15:30	30 minutes	Building 85, entrance foyer
Careers and employability talk	12:00 13:00 14:00	30 minutes	Building 53 (Mountbatten), Level 4, Room 4025
Teaching lab tour	09:30 10:00 10:30 11:00 11:30 12:00 13:00 13:30 14:00 14:30 15:00 15:30	30 minutes	Building 53 (Mountbatten), entrance foyer
High Voltage Lab and Electric Power Engineering tour and demo	11:30 12:30 13:30 15:30	30 minutes	Entrance to Building 20 (High Voltage Lab)
Nanotech Clean Room tour	11:30 12:30 13:30 15:30	30 minutes	Building 53 (Mountbatten), entrance foyer
Welcome desk and drop in	10:00–16:00		Building 53 (Mountbatten), entrance foyer
Visit Future Worlds, the University of Southampton's on-campus startup accelerator, helping aspiring student and staff entrepreneurs change the world with their ideas	11:00 11:30 12:00 12:30 13:00 13:30 14:00 14:30	30 minutes	Building 53 (Mountbatten), entrance foyer

■ ARTS AND HUMANITIES
 ■ SCIENCE AND MATHEMATICS
 ■ ENGINEERING AND COMPUTING
 ■ SOCIAL SCIENCES AND EDUCATION
 ■ BUSINESS AND LAW
 ■ EARTH AND ENVIRONMENTAL SCIENCE
 ■ MEDICINE AND HEALTHCARE SCIENCE
 ■ FOUNDATION YEARS

*Location is on Highfield Campus unless otherwise specified

DETAILS	TIME	DURATION	LOCATION*
ENGLISH			
Subject talk	11:15 13:15	45 minutes	Avenue Campus, Building 65, Lecture Theatre A
Tour of Avenue Campus	10:00–15:45 (departing every 15 minutes)	20 minutes	Avenue Campus, Building 65, Main Reception
Drop in	10:00–16:00		Avenue Campus, Building 65, Room 1097
Study abroad opportunities	10:00–16:00		Avenue Campus, Building 65, North Corridor
ENGLISH LANGUAGE AND LINGUISTICS			
Subject talk	13:15	45 minutes	Avenue Campus, Building 65, Lecture Theatre B
Tours of Avenue Campus	10:00–15:45 (departing every 15 minutes)	20 minutes	Avenue Campus, Building 65, Main Reception
Drop in	10:00–16:00		Avenue Campus, Building 65, Room 1163
Study abroad opportunities	10:00–16:00		Avenue Campus, Building 65, North Corridor
ENVIRONMENTAL SCIENCE			
Subject talk	10:15 11:30 13:45	45 minutes	Building 44 (Shackleton), Level 1, Lecture Theatre B
Drop in	09:45–15:30		Building 44 (Shackleton), Level 2, foyer
Taster lecture	12:45	45 minutes	Building 44 (Shackleton), Level 1, Lecture Theatre B
FILM STUDIES			
Subject talk	10:15 12:15	45 minutes	Avenue Campus, Building 65, Lecture Theatre C
Tour of Avenue Campus	10:00–15:45 (departing every 15 minutes)	20 minutes	Avenue Campus, Building 65, Main Reception
Drop in	10:00–16:00		Avenue Campus, Building 65, Room 1095
Study abroad opportunities	10:00–16:00		Avenue Campus, Building 65, North Corridor
FINANCE			
Subject talk	10:30 12:30	40 minutes	Building 2, Level 3, Room 3043
Explore how the Bloomberg Terminal brings together real-time market data, breaking news and powerful analytics	09:30–16:30	30 minutes	Building 58 (Murray), Level 1, Room 1053, Bloomberg Trading Suite
FOUNDATION YEAR (ENGINEERING, MATHS, PHYSICS, GEOPHYSICS)			
Subject talk	10:45 14:00	45 minutes	Building 5 (Eustice), Level 2
Drop in	10:00–16:00		Building 5 (Eustice), Level 2
FOUNDATION YEAR: SCIENCE (BIOLOGY, CHEMISTRY, ENVIRONMENTAL SCIENCE, OCEAN AND EARTH SCIENCE)			
Subject talk	12:00 14:30	30 minutes	Building 85, Room 2209
Drop in	15:00–16:00		Building 85, Room 2209

DETAILS	TIME	DURATION	LOCATION*
GEOGRAPHY			
Subject talk	10:30 11:30 12:30	50 minutes	Building 44 (Shackleton), Level 1, Lecture Theatre A
Drop in	10:00–15:00		Building 44 (Shackleton), Level 1
BSc Geography Labs	10:00–15:00		Building 44 (Shackleton), Level 1
GEOLOGY			
Subject talk	11:30 15:00	45 minutes	National Oceanography Centre Southampton, Level 4, Charnock Theatre
Tours and demonstrations	09:30 10:30 12:30 14:00 15:45	60 minutes	National Oceanography Centre Southampton, Level 4, reception
Drop in	09:30–17:00		National Oceanography Centre Southampton, Level 4, area outside seminar room
GEOPHYSICS			
Subject talk	11:30 15:00	45 minutes	National Oceanography Centre Southampton, Level 4, Charnock Theatre
Tours and demonstrations	09:30 10:30 12:30 14:00 15:45	60 minutes	National Oceanography Centre Southampton, Level 4, reception
Drop in	09:30–17:00		National Oceanography Centre Southampton, Level 4, area outside seminar room
HISTORY			
Subject talk	10:15 12:15 14:15	45 minutes	Avenue Campus, Building 65, Lecture Theatre A
Tour of Avenue Campus	10:00–15:45 (departing every 15 minutes)	20 minutes	Avenue Campus, Building 65, Main Reception
Drop in	10:00–16:00		Avenue Campus, Building 65, Room 1173
Study abroad opportunities	10:00–16:00		Avenue Campus, Building 65, North Corridor
LAW			
Subject talk (includes subject talk, taster lecture and student experience talk)	11:30 13:45	60 minutes	Building 2A, Lecture Theatre H
MARINE BIOLOGY			
Subject talk	10:00 13:30 16:00	60 minutes	National Oceanography Centre Southampton, Level 4, Charnock Theatre
Tours and demonstrations	09:15 11:15 12:00 12:45 14:45	60 minutes	National Oceanography Centre Southampton, Level 4, Reception
Drop in	09:30–17:00		National Oceanography Centre Southampton, Level 4, area outside seminar room

■ ARTS AND HUMANITIES
 ■ SCIENCE AND MATHEMATICS
 ■ ENGINEERING AND COMPUTING
 ■ SOCIAL SCIENCES AND EDUCATION
 ■ BUSINESS AND LAW
 ■ EARTH AND ENVIRONMENTAL SCIENCE
 ■ MEDICINE AND HEALTHCARE SCIENCE
 ■ FOUNDATION YEARS

*Location is on Highfield Campus unless otherwise specified

DETAILS	TIME	DURATION	LOCATION*
MARKETING			
Subject talk	11:30 13:30	40 minutes	Building 2, Level 1, Room 1039
MATHEMATICAL SCIENCES			
Subject talk: all programmes in Mathematical Sciences	11:00 13:30	45 minutes	Building 54 (Mathematical Sciences), Level 4, Lecture Theatre 4A (4011)
Subject talk: MMath Mathematical Physics	12:45	30 minutes	Building 54 (Mathematical Sciences), Level 4, Lecture Theatre 4A (4011)
Taster lecture	12:00 14:30	30 minutes	Building 54 (Mathematical Sciences), Level 4, Lecture Theatre 4A (4011)
Explore how the Bloomberg Terminal brings together real-time market data, breaking news and powerful analytics	09:30–16:30	30 minutes	Building 58 (Murray), Level 1, Room 1053, Bloomberg Trading Suite
Maths Fair: interactive activities, puzzles and demonstrations by maths staff and students	10:30–15:00		Building 56 (Mathematical Sciences Student Centre)
Q&A with Head of Mathematical Sciences and Admissions Tutor	11:45 14:15	45 minutes	Building 56 (Mathematical Sciences Student Centre)
MECHANICAL ENGINEERING			
Subject talk	09:45 11:45 13:45	45 minutes	Building 7 (Lanchester), Level 3, Lecture Theatre A
Talk: Which engineering subject should I study? Find out about our engineering subjects and choose the right one for you	09:45 11:15 12:30 13:45	40 minutes	Boldrewood Innovation Campus, Building 176, Level 1, with live webcast to Building 5 (Eustice), Level 2
Drop in	10:00–16:00		Boldrewood Innovation Campus, Building 177, Level 3
Visit engineering facilities at Highfield Campus	10:00–16:00		Details (including map) available from Building 18 Information Fair, Building 13 Information Point and Boldrewood Innovation Campus Information Point, Building 177
Visit engineering facilities at Boldrewood Innovation Campus	10:00–16:00		
Mechatronic Engineering: See Electrical and Electronic Engineering			
MEDICINE			
Subject talk	09:30 12:00 14:30	45 minutes	Building 32, Level 1, Lecture Theatre
MIDWIFERY			
Subject talk	11:15	45 minutes	Building 67, Level 1
Drop in	10:00–15:00		Building 67, Level 2
Admissions help desk	10:00–15:00		Building 67, Level 2
Placement zone	10:00–15:00		Building 67, Level 2

DETAILS	TIME	DURATION	LOCATION*
MODERN LANGUAGES AND LINGUISTICS			
Subject talk	10:15 12:15	45 minutes	Avenue Campus, Building 65, Lecture Theatre B
Tour of Avenue Campus	10:00–15:45 (departing every 15 minutes)	20 minutes	Avenue Campus, Building 65, Main Reception
Tour of the Centre for Language Study	10:15–15:30 (departing every 15 minutes)	30 minutes	Avenue Campus, Building 65, Main Reception
Drop in	10:00–16:00		Avenue Campus, Building 65, Room 1163
Study abroad opportunities	10:00–16:00		Avenue Campus, Building 65, North Corridor
MUSIC			
Subject talk	11:00 14:00	45 minutes	Building 2, Room 1083
Performance	12:30	45 minutes	Building 52, Turner Sims
Tour of Music department	10:00–15:45 (departing every 30 minutes)	25 minutes	Building 2, Music department, foyer
Drop in	10:00–16:00		Building 2, Room 2061
NATURAL SCIENCES			
Subject talk	11:00 14:00	30 minutes	Building 85, Room 2209
Drop in	10:00–15:00		Building 85, Level 1, The Pod
<i>Neuroscience: See Biological sciences</i>			
NURSING			
Subject talk	10:15 13:15	45 minutes	Building 67, Level 1
Drop in	10:00–15:00		Building 67, Level 1
Skills taster session	10:00–15:00		Building 67, Level 2
Admissions help desk	10:00–15:00		Building 67, Level 2
Placement zone	10:00–15:00		Building 67, Level 2
OCCUPATIONAL THERAPY			
Subject talk	12:30	45 minutes	Building 67, Level 1
Workshop	13:30	60 minutes	Building 67, Level 1
Drop in	10:00–15:00		Building 67, Level 2
Admissions help desk	10:00–15:00		Building 67, Level 2
Placement zone	10:00–15:00		Building 67, Level 2
OCEANOGRAPHY			
Subject talk	10:00 13:30 16:00	60 minutes	National Oceanography Centre Southampton, Level 4, Charnock Theatre
Tours and demonstrations	09:15 11:15 12:00 12:45 14:45	60 minutes	National Oceanography Centre Southampton, Level 4, Reception
Drop in	09:30–17:00		National Oceanography Centre Southampton, Level 4, area outside seminar room
<i>Pharmacology: See Biological sciences</i>			

■ ARTS AND HUMANITIES
 ■ SCIENCE AND MATHEMATICS
 ■ ENGINEERING AND COMPUTING
 ■ SOCIAL SCIENCES AND EDUCATION
 ■ BUSINESS AND LAW
 ■ EARTH AND ENVIRONMENTAL SCIENCE
 ■ MEDICINE AND HEALTHCARE SCIENCE
 ■ FOUNDATION YEARS

*Location is on Highfield Campus unless otherwise specified

DETAILS	TIME	DURATION	LOCATION*
PHILOSOPHY			
Subject talk	11:15 14:15	45 minutes	Avenue Campus, Building 65, Lecture Theatre B
Tour of Avenue Campus	10:00–15:45 (departing every 15 minutes)	20 minutes	Avenue Campus, Building 65, Main Reception
Drop in	10:00–16:00		Avenue Campus, Building 65, Room 1093
Study abroad opportunities	10:00–16:00		Avenue Campus, Building 65, North Corridor
PHYSICS AND ASTRONOMY			
Subject talk	11:00 13:00	50 minutes	Building 46, Level 3, Lecture Theatre A
Tour of building and labs	10:00–16:00	30 minutes	Building 46, foyer
Career destinations talk	13:00 15:00	20 minutes	Building 46, Level 2, Lecture Theatre C
Planetarium astronomy show	12:00 13:00 14:00 15:00	60 minutes	Building 46, Level 5, seminar room
Meet academics and students	10:00–16:00		Building 46, foyer
Try out a lab experiment (limited spaces), book your place on the day	12:00 13:00 14:00 15:00		Building 46, foyer
PHYSIOTHERAPY			
Subject talk	12:15 14:15	45 minutes	Building 67, Level 1
Drop in	10:00–15:00		Building 67, Level 2
Admissions help desk	10:00–15:00		Building 67, Level 2
Placement zone	10:00–15:00		Building 67, Level 2
PODIATRY			
Subject talk	11:15	45 minutes	Building 67, Level 1
Drop in	10:00–15:00		Building 67, Level 2
Admissions help desk	10:00–15:00		Building 67, Level 2
Placement zone	10:00–15:00		Building 67, Level 2
POLITICS AND INTERNATIONAL RELATIONS			
Subject talk	11:00 14:30	45 minutes	Building 58 (Murray), Murray Lecture Theatre
POPULATION AND GEOGRAPHY			
Subject talk	12:30	45 minutes	Building 58 (Murray), Level 1, Lecture Room G
Field trip video	10:00–15:00	5 minute video on loop	Building 58 (Murray), Level 1, Lecture Room A
PSYCHOLOGY			
Subject talk	11:30 13:30	40 minutes	Building 52, Turner Sims

DETAILS	TIME	DURATION	LOCATION*
SHIP SCIENCE			
Subject talk	11:00 14:00	45 minutes	Boldrewood Innovation Campus, Building 185, Level 3
Talk: Which engineering subject should I study? Find out about our engineering subjects and choose the right one for you	09:45 11:15 12:30 13:45	40 minutes	Boldrewood Innovation Campus, Building 176, Level 1, with live webcast to Building 5 (Eustice), Level 2
Drop in	10:00–16:00		Boldrewood Innovation Campus, Building 185, Level 3
Visit engineering facilities at Highfield Campus	10:00–16:00		Details (including map) available from Building 18 Information Fair, Building 13 Information Point and Boldrewood Innovation Campus Information Point, Building 177
Visit engineering facilities at Boldrewood Innovation Campus	10:00–16:00		
SOCIOLOGY AND SOCIAL POLICY			
Subject talk	13:30	45 minutes	Building 58 (Murray), Murray Lecture Theatre
Zoology: See Biological sciences			

■ ARTS AND HUMANITIES
 ■ SCIENCE AND MATHEMATICS
 ■ ENGINEERING AND COMPUTING
 ■ SOCIAL SCIENCES AND EDUCATION
 ■ BUSINESS AND LAW
 ■ EARTH AND ENVIRONMENTAL SCIENCE
 ■ MEDICINE AND HEALTHCARE SCIENCE
 ■ FOUNDATION YEARS

*Location is on Highfield Campus unless otherwise specified

EXPLORE THE CITY

“

Southampton is a city that is bursting with culture and life. There's something for everyone and it's been fantastic being able to embrace it all alongside my studies.”

Emily Fry

BA English and Education, final year
Life at Southampton Student Blogger

Read more about Emily's life in Southampton and meet her fellow bloggers, at www.lifeatsouthampton.co.uk

Southampton is one of the most lively and dynamic cities in the south of England. With an exciting cultural community, international connections and a vibrant city centre, Southampton has been ranked the third best place to live and work in the UK.*

The city has a rich arts scene, offering plenty of events and exhibitions at museums, music venues, galleries and theatres. Spend some time at the Cultural Quarter, exploring contemporary art at our very own John Hansard Gallery or watching the latest regional theatre productions at Nuffield Southampton Theatres (NST). If you enjoy sport, you might be drawn to St Mary's Stadium, home to Southampton FC, or the Ageas Bowl.

Westquay is ideal for shopping, and there are plenty of independent and well-known restaurants, cafes and bars where you can enjoy a drink or a meal at any time of day. If you're looking for nightlife, the city is buzzing with bars, clubs and shows, often featuring special student promotions.

Southampton is one of the UK's greenest cities. Relax and unwind in one of our many parks, or make the most of nature on Southampton Common.

Why not explore Southampton for yourself? Take one of our free bus services after the Open Day, or, if you don't have time, visit our 360-degree virtual experience room, located in the City Life and Accommodation Zone at the Information Fair.

*Good Growth for Cities Index 2018, Demos-PwC

STUDENTS' UNION

When you join the University, you automatically become a member of the Students' Union. The Students' Union is independent from the University and is run for students by students, to unlock the potential and enrich the life of every student.

- Run for one of the positions in the Students' Union's elections, and become the voice of students across the University.
- Experience Freshers'; a full programme of activities and events to help you settle in, meet new people and find out more about university life.
- Join over 300 sports clubs and societies, ranging from archery, Quidditch and performing arts to football, debating and tennis.
- Dance the night away in the Union's venue for large events, such as gigs and student celebrations.
- Have fun and give back to the community with RAG (Raise and Give), which organises fundraising events to benefit charities.
- Eat at The Bridge, with food from a Michelin-trained chef at student prices.
- Socialise with friends in The Stag's sports bar and experience their legendary karaoke night.

- Catch a film in the 260-seat cinema, run by Union Films, a team of student volunteers.
- Become a DJ or director at the Union's award-winning Surge Radio and SUSUtv.
- Write and edit articles as a student journalist with one of the Union's award-winning magazines, *Wessex Scene* or *The Edge*.
- Get free, confidential and independent support from The Advice Centre, who can advise students on housing, finances, academic issues and more.

Find out more:
www.susu.org

“

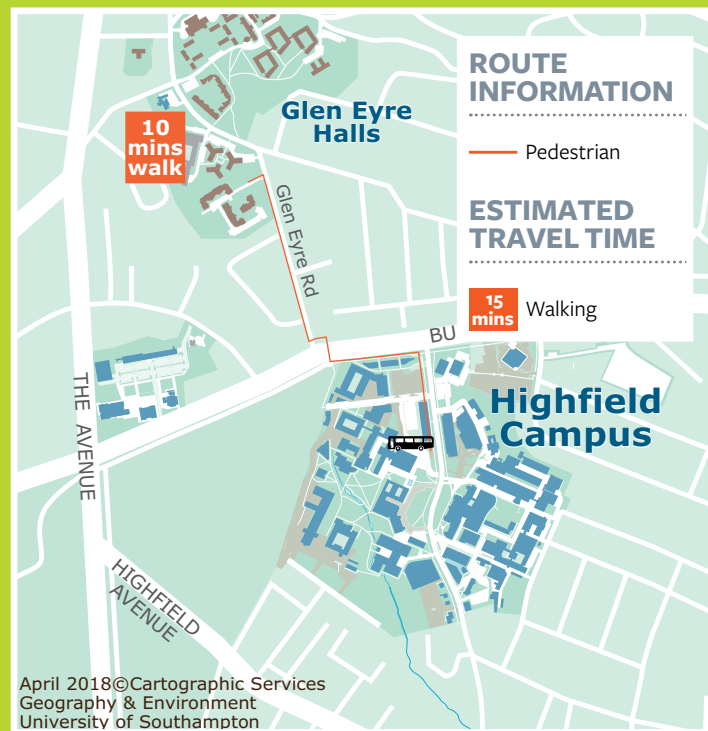
Southampton has been wonderful. The options to engage in different activities while here are endless.”

Swathy Sanjay Sindhu

LLB Law with Psychology, final year



ACCOMMODATION



A selection of our halls of residence will be available to view during the Open Day. We offer a range of high-quality accommodation, with different room types and locations to suit everyone.

As well as the sites open today, we also have many other halls of residence available for you to apply to live in.

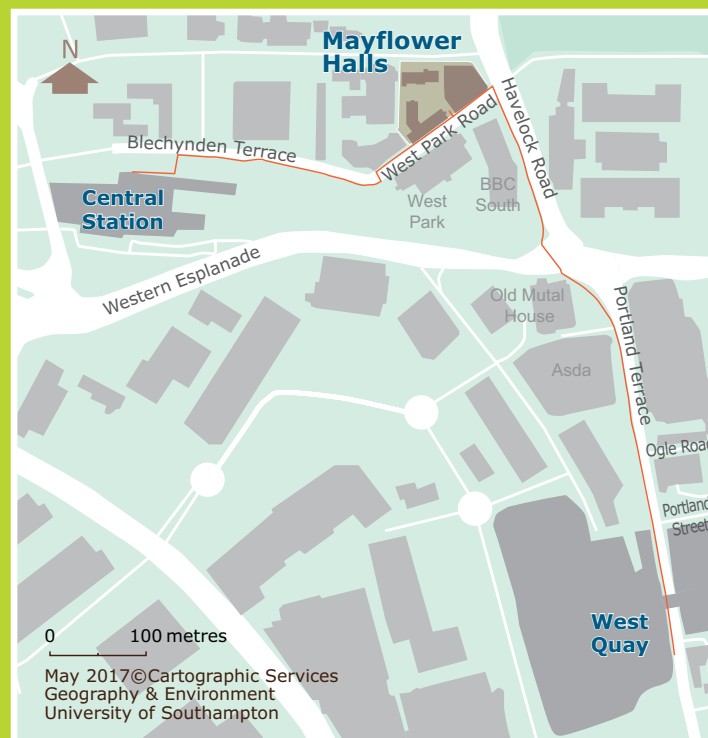
To find out more, please visit our Accommodation team at the Information Fair in Building 18.

Special requirements

If you have any special requirements for your room, need an adapted room, or would like to see an adapted room on the Open Day, please speak to our Accommodation team at the Information Fair, or at one of our halls sites.

Glen Eyre Halls

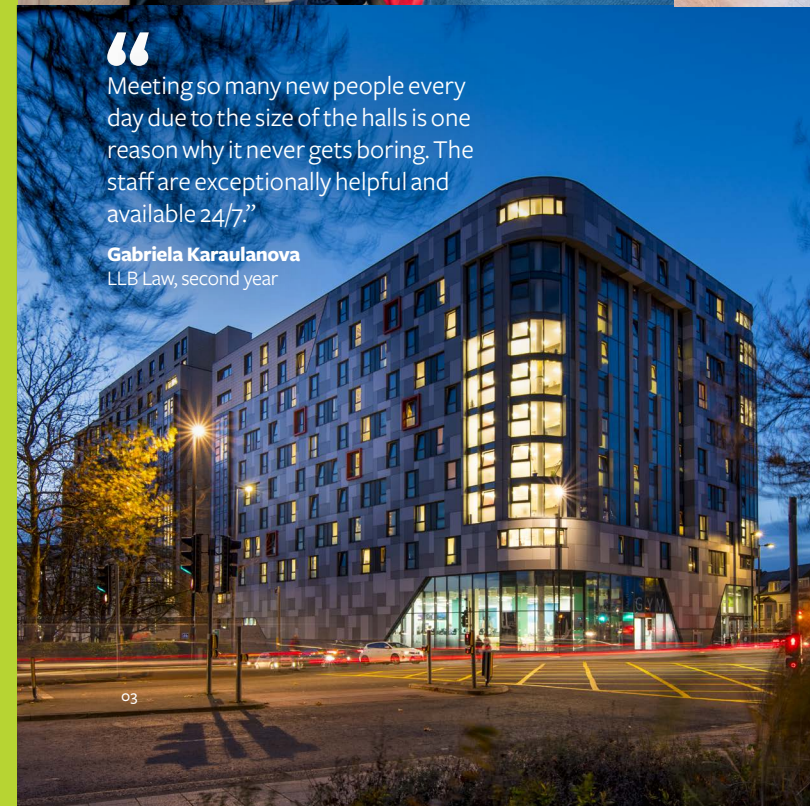
Open for viewing between 10:00 and 16:00



Mayflower Halls

To view Mayflower Halls, take the shuttle bus to Southampton Central train station and follow the AA walking route signs.

Open for viewing between 12:00 and 17:00



“Meeting so many new people every day due to the size of the halls is one reason why it never gets boring. The staff are exceptionally helpful and available 24/7.”

Gabriela Karaulanova
LLB Law, second year

- 01 Glen Eyre Halls, Southampton
- 02 Glen Eyre Halls, Southampton
- 03 Mayflower Halls, Southampton
- 04 Mayflower Halls, Southampton
- 05 Highfield Halls, Southampton
- 06 Mayflower Halls, Southampton

HIGHFIELD CAMPUS MAP

Highfield Campus is our main campus and caters for most of our academic courses. Incorporating state-of-the-art research and teaching facilities, it boasts new and refurbished student facilities such as the Students' Union and the Jubilee Sports Centre.



KEY		Building numbers		Check in	Disabled routes and access		Parking for disabled persons
		Information Fair		Information Point			Toilets for disabled persons (with wheelchair access)
		Footpaths		Catering Outlet			Accessible payphone
		Highfield Interchange		Marquee			Wheelchair route (unaided)
		Locked Bicycle storage		First Aid			Wheelchair route (with assistance)
							Ramp

Over the next decade,
we plan to invest
over £300m
in our infrastructure
and facilities



- 01 The view of Highfield Campus from the Life Sciences Building (Building 85)
- 02 Hartley Library
- 03 Life Sciences Building (Building 85)
- 04 Green spaces on Highfield Campus

“My time in Southampton so far has been absolutely fantastic! The opportunities that I have been able to engage with and the friends I have made from different countries so far have been very fulfilling.”

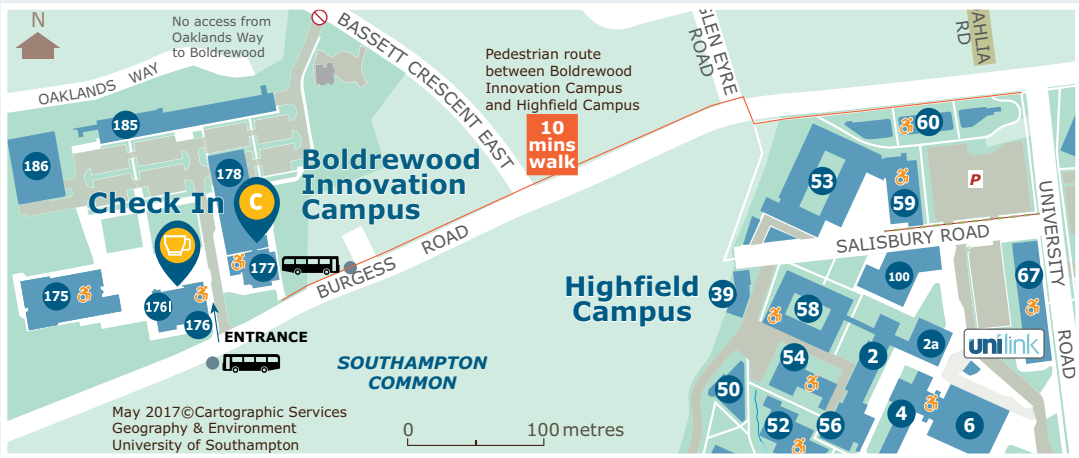
Dibyayan Ghosh
BSc Accounting and Finance with a year in placement,
first year



CAMPUS MAPS

Boldrewood Innovation Campus route to Highfield Campus

A short walk from Highfield Campus, our new Boldrewood Innovation Campus houses our centre for innovation, business and education in maritime engineering and engineering sciences.



Boldrewood Innovation Campus

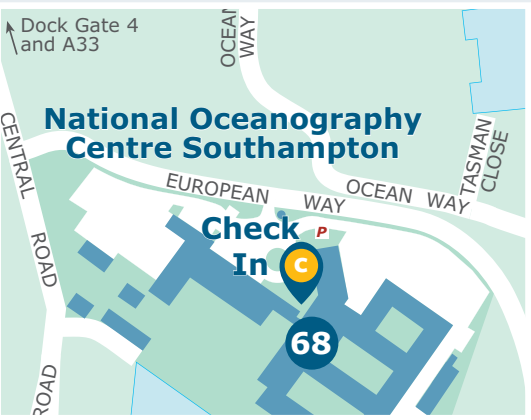


National Oceanography Centre Southampton

National Oceanography Centre Southampton

Our waterfront campus is one of the world's leading research centres for the study of ocean and earth sciences.

Pre-booked parking is available at the National Oceanography Centre Southampton (NOCS) for those interested in subjects based at the campus. NOCS can be accessed by bus from Westquay and Southampton Central train station, as well as from Highfield Campus. Student ambassadors will be available to direct you to the correct bus.



Avenue Campus

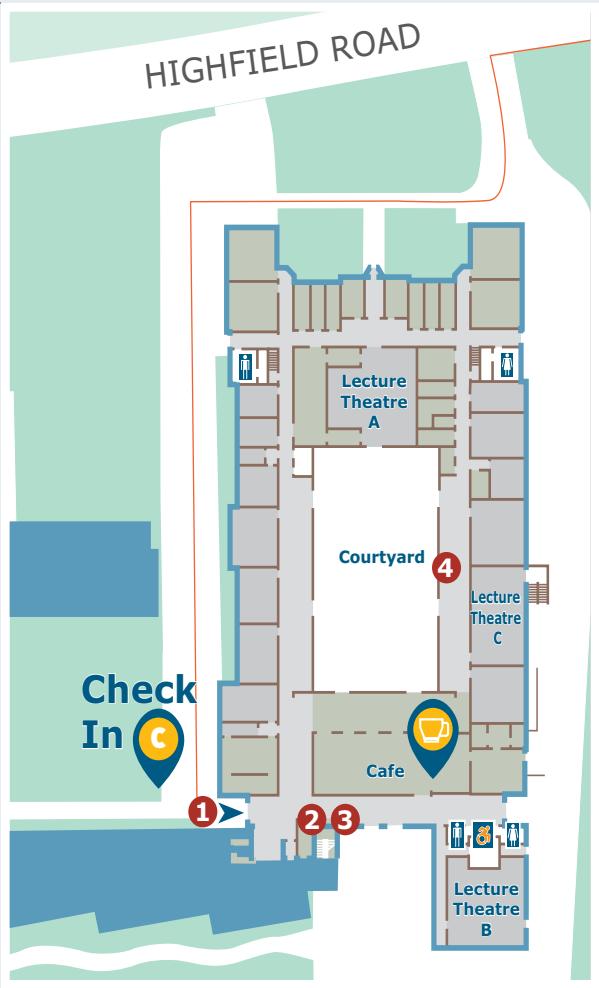
Avenue Campus maps

Our humanities campus houses a state-of-the-art purpose-built Archaeology building and is located on the edge of Southampton Common, a short walk from Highfield.

If you are arriving at Avenue by bus, you will be dropped off and picked up on The Avenue (A33). Look out for student ambassadors who will direct you between the bus stop and the campus.

KEY

- 1 Main entrance
- 2 Information desk
- 3 Avenue Campus tours meeting point
- 4 Study abroad opportunities



CATERING FACILITIES

A wide variety of restaurants and cafes will be open around the University, offering a range of refreshments from drinks and snacks to full meals.

BUILDING 38, STAFF SOCIAL CENTRE		
Starbucks	09:00–16:00	Starbucks drinks, pastries, cakes and muffins
Cafe express 38	09:00–15:00	Hot and cold drinks, sandwiches and snacks
The Arlott Bar - the ethical destination	08:30–17:00	Triple-certified Barista coffee, cold drinks, selection of hot pasties, baguettes, cakes and muffins
STAFF SOCIAL CENTRE FRONT LAWN		
Autumnal Food and Drink Fayre	11:30–15:00	A selection of hearty autumnal food and drink
BUILDING 12, HARTLEY LIBRARY		
Library Cafe	09:00–15:00	Paninis, toasties, sandwiches and burritos, hot and cold drinks
INTERCHANGE KIOSK GRAB & GO		
Kiosk	08:00–15:30	Sandwiches, snacks, hot and cold drinks
BUILDING 42		
Piazza Food Court	08:30–15:00	Breakfast offers, pizza, traditional and fast food, sandwiches
Piazza Starbucks	08:30–16:00	Starbucks drinks, cakes and muffins
BUILDING 85		
Café 85	09:00–15:00	Hot and cold drinks, sandwiches and snacks
NATIONAL OCEANOGRAPHY CENTRE SOUTHAMPTON (NOCS)		
NOCS Cafe	08:30–6:00	Barista-style hot drinks, traditional hot food, cold drinks, sandwiches, cakes and snacks
AVENUE CAMPUS		
Avenue Cafe	08:30–16:00	Barista-style hot drinks, cold drinks, sandwiches, cakes and snacks
BOLDREWOOD INNOVATION CAMPUS		
Boldrewood Cafe	09:00–16:00	Hot and cold drinks, cakes, cookies, muffins and a selection of hot food
STUDENTS' UNION		
The Shop	10:00–16:00	Great value and convenience for a range of groceries and products, situated next to the Students' Union
The Stag's	11:30–20:00	Offers a large range of alcoholic and soft drinks, and great deals on food, including pizzas and hot dogs
The Bridge	08:30–16:00 (serving food 12:00–15:30)	A bistro bar offering a variety of hot food, salads, cakes and drinks

YOUR PLANNER

Use this planner to build your day around the events that interest you, to help you get the most out of your day.

Remember to allow enough time to walk/travel between buildings or campuses. See page 7 for approximate travel times.

Please also remember that some talks are very popular, so plan some alternative activities in case you find a talk is full and you have to return later.

Don't forget to have your ticket ready to be scanned.

TIME	EVENT	VENUE	CAMPUS
09:00			
09:15			
09:30			
09:45			
10:00			
10:15			
10:30			
10:45			
11:00			
11:15			
11:30			
11:45			
12:00			
12:15			
12:30			
12:45			
13:00			
13:15			
13:30			
13:45			
14:00			
14:15			
14:30			
14:45			
15:00			
15:15			
15:30			
15:45			
16:00			
16:15			
16:30			
16:45			
17:00			
17:15			
17:30			
17:45			
18:00			