

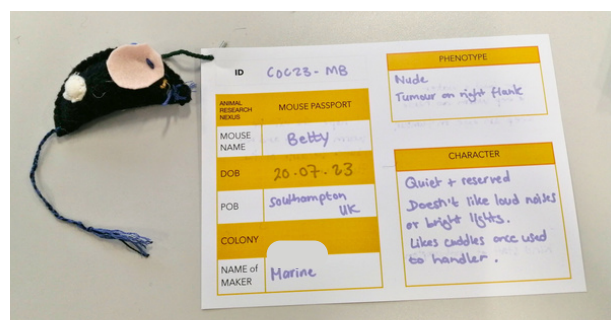
# DEFINING OUR CULTURE OF CARE

On 20 July, the University of Southampton's Animal Welfare and Ethical Review Body (AWERB) led an event to explore and define the University's Culture of Care. This workshop was attended by 24 participants representing various roles around the care and use of animals in research. These included researchers, animal technologists, named persons (animal welfare and care officer, information officer, and veterinary surgeon), students (both undergraduate and postgraduate), and academic staff members from departments that are not involved in research using animals.

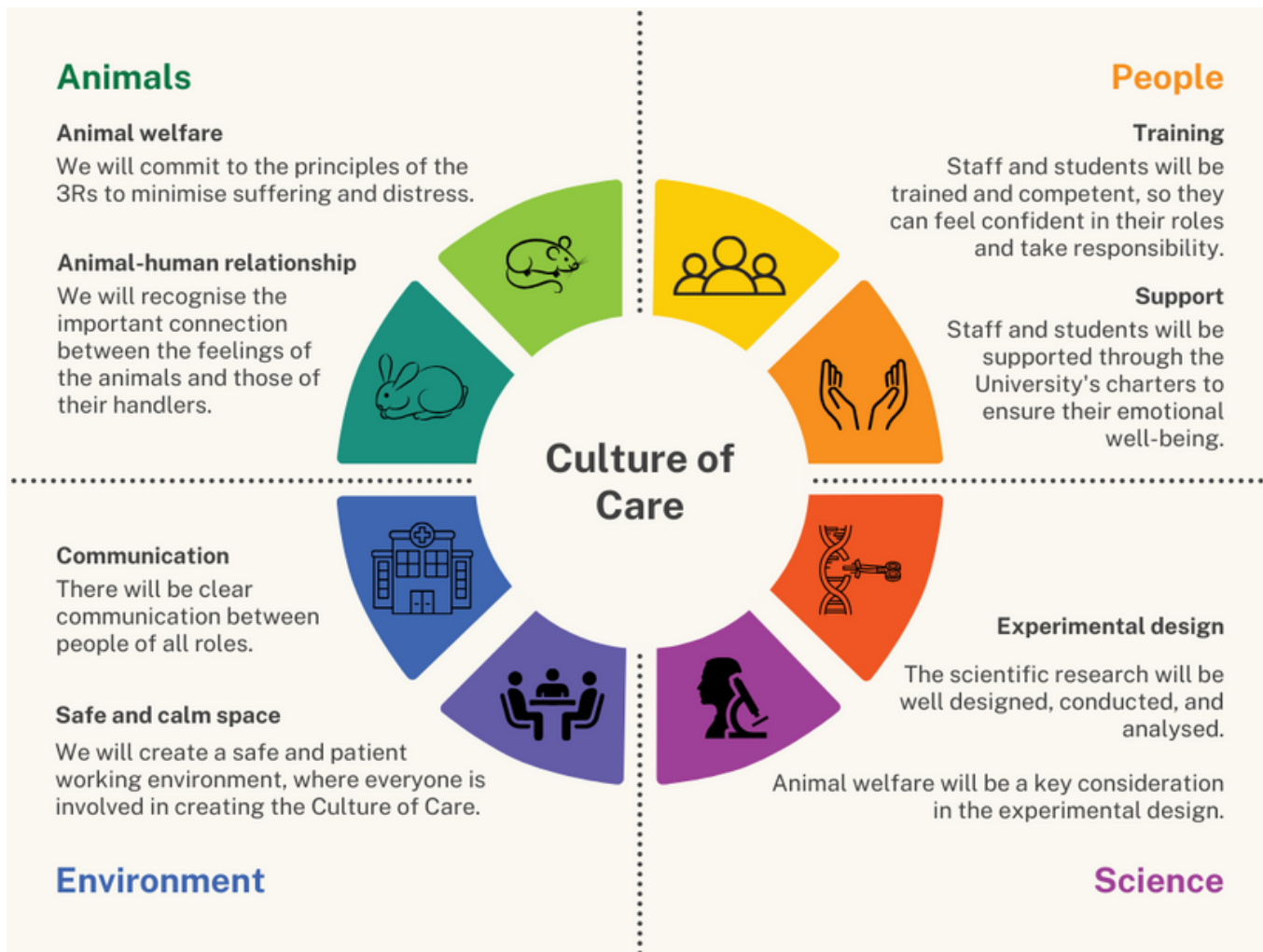
The event started with lunch to allow attendees to meet each other. Participants were then assigned to one of three groups comprising a mix of different roles. The first item was the Mouse Exchange, a "curiosity-driven activity that explores the origins of laboratory mice through crafting and conversations". This was facilitated by Prof. Emma Roe and Dr Paul Hurley, who were part of the original team that developed the Mouse Exchange as part of the Animal Research Nexus. Both are now based in Geography and Environmental Science at the University of Southampton, where Paul also works in the Centre for Higher Education Practice (CHEP).



The Mouse Exchange provides a safe and care-full space for participants to explore each other's perspectives while making a research mouse using felt and crafting materials. Participants also completed a mouse "passport", through which they were encouraged to think about the care needs of their research mouse. The mood created by this activity was calm and reflective, enabling participants to openly share thoughts about the animals in their care.



After a short coffee break, participants returned for a facilitated group discussion to define a set of Declarations that describe the University's Culture of Care. These Declarations have been refined into an infographic.



Finally, participants were asked to contribute three words (a noun, verb, and adjective) which were used to produce a word cloud that encapsulates the values of the University's Culture of Care. The workshop ended with closing remarks from Dr Penny Hawkins, a long-standing independent member of the AWERB.

