

OPEN DAY PROGRAMME



**WINCHESTER
SCHOOL OF ART**

SATURDAY 18 NOVEMBER

WELCOME TO WINCHESTER SCHOOL OF ART

Immerse yourself in the atmosphere of our creative campus and be inspired by our students' work and influences at Winchester School of Art (WSA).

Explore your favourite subject, discover the amazing opportunities you'll have here and visit the spaces and facilities that you'll study in. Our facilities are filled with a diverse range of equipment to support you during your studies, including:

- + High-spec computer suites with Mac and PC computers.
- + Digital resources including consoles, VR and AR, multiple photography studios and an editing suite.
- + Specialist printing equipment including laser cutting, 3D printer and scanner and a Mimaki fabric printer.
- + Fashion studios equipped with a full range of sewing machines including multi-thread overlockers, presses and cutting tables.
- + A range of knitting machines including single, double bed and computerised Shima Seiki knitting machines.
- + Bright weaving workshops including AVL dobby looms and a TC2 digital loom.
- + Sculpture workshops, including a bronze foundry with ceramic kilns, meta and plastic fabrication shop, letterpress printing machines and etching presses.
- + Large screen-printing facilities and dye-labs.
- + On-campus specialist art and design Gallery and Library.
- + Winchester West Wing, delivering leading-edge fashion leadership education in a contemporary and modern environment.
- + Industry standard specialist software across all disciplines including CLO 3D, Unity, Blender and the full Adobe suite.

DISTANCE FROM **WSA** TO
SOUTHAMPTON

🚶 22 mins 🚗 17 mins

DISTANCE FROM **WSA** TO
LONDON

🚶 60 mins 🚗 1hr 40 mins

EXPLORE THE CITY OF WINCHESTER

Winchester is a vibrant city with diverse cultural life. Whether you want to spend your free time learning about the city's history or socialising with friends, Winchester has it covered.

Discover fun and independent places to eat and drink such as:

- + Josie's
- + Hoxton Bakehouse
- + CUPP Bubble Tea
- + Pitcher and Piano
- + County Arms (also great for live music and karaoke)

Explore things to do including:

- + Unique and lively shopping such as The Hambledon and TK Maxx.
- + Independent cinema and theatres.
- + New leisure centre with fantastic facilities.

Delve into the history and enjoy the nature, visit:

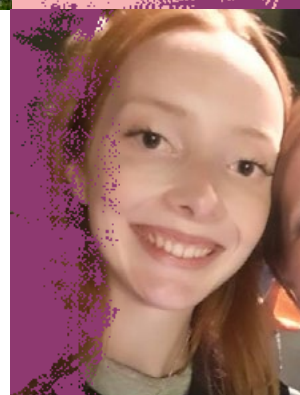
- + St Catherine's Hill - a 30-minute walk from WSA with picturesque views over the city (perfect for a picnic)
- + Winnall Moors nature reserve close to campus
- + Winchester Cathedral
- + Wolvesey Castle

Ranked
8th
for **Art and Design**
research quality
Complete University Guide, 2024

College Member of
the **British Fashion**
Council

Partnered with
Women in Games,
UKIE, Raise The Game

Member of the **UK**
Fashion and Textile
Association (UKFT)



“Welcome to Winchester School of Art! To get the most out of the Open Day I'd recommend talking to students about their experience at uni and getting to know about student life, as well as the course.

Studying at WSA has been so exciting and full of creativity. It's been amazing learning new techniques and expanding my skill set. As well as using industry-level facilities to create work for my projects.”

Rosie Spurrier (she/her)
BA Textile Design, second year

DISTANCE FROM **WSA** TO THE
CITY CENTRE

🚶 5 mins 🚲 2 mins 🚗 4 mins

DISTANCE FROM **WSA** TO
ERASMUS PARK ACCOMMODATION

🚶 15 mins 🚗 5 mins 🚲 10 mins

SCHEDULE OF EVENTS

TALKS	TIME	DURATION	LOCATION
WELCOME TALKS			
Welcome talk	10:30 11:30	20 mins	West Side Building, Level 2, Lecture Theatre A
Student Life talk	11:00 12:00	20 mins	West Side Building, Level 2, Lecture Theatre A
SUBJECT TALKS			
Creative Computing	12:30	55 mins	East Side Building, Level 2, Lecture Theatre B
Fashion Design	11:00	55 mins	West Side Building, Level 2, Fashion Studio 4
Fashion Marketing with Management	12:30	55 mins	West Side Lecture Theatre Building, West Side Lecture Theatre
Fine Art	12:30	55 mins	West Side Building, Level 2, Lecture Theatre A
Games Design and Art	10:00	55 mins	West Side Lecture Theatre Building, West Side Lecture Theatre
Graphic Communication	11:15	55 mins	West Side Lecture Theatre Building, West Side Lecture Theatre
Textile Design	12:30	55 mins	East Side Building, Level 2, Textile Studio

OTHER ACTIVITIES

Subject Demonstrations

Across Winchester School of Art Campus
10:00-16:00
Get a feel for the kinds of activities you could take part in as a student here. Enjoy the variety of interactive activities in our workshops and see the facilities in action.

Portfolio Advice Session

East Side Building, Level 2, Lecture Theatre B
10:15-10:45 | 11:45-12:15
Get top tips from our academic team.

The Quiet Room

South Building, Level 3, Seminar Room 9
10:00-16:00
If you would like to step away to a quiet space during your visit today, our Quiet Room will be open throughout the day.

Alumni Panel

East Side Building, Level 2, Lecture Theatre B
11:00-11:30 | 13:45-14:15
Get a feel for where your art degree could take you. Hear from our alumni panel and how their degree boosted their careers and helped them to pursue their passion for art.

Meet the students

East Side Building, Level 2, Lecture Theatre B
14:30-15:00
Ask our current students about life in Winchester in this informal Q and A session. This session is for prospective students only, could guests please wait in the café or outside to support this peer to peer session.

The Winchester Gallery

12:00-16:00
Browse the wonderful art featured in the gallery.

TOURS	TIME	LOCATION	DESCRIPTION
Campus tours	10:00-16:00	East Side Building, Level 1, Cafe, Campus Tour Stand	Our knowledgeable student ambassadors will guide you round the campus and help you explore the fantastic facilities on offer here at Winchester School of Art. You'll have the opportunity to see all of the distinct areas for our undergraduate degree programmes. The tours last approximately 30 minutes. The last tour departs at 15:30.
Accommodation tour (self guided)	10:00-16:00	Erasmus Park	Take a self-guided tour around Winchester School of Art's dedicated halls of residence, Erasmus Park. You'll have the opportunity to view the common room, laundry room and an ensuite flat. If you have any questions, please speak to our accommodation representatives at Erasmus Park or visit the Student Life Hub. Information on how to get to Erasmus Park is included on pages 8 and 9.
City tour (self guided)		Pick up a map from the Campus Tour Stand (East Side Building, Level 1, Cafe)	The centre of the beautiful city of Winchester is just a 5-minute walk from our campus. Explore the city at your leisure; pick up a walking map from the Campus Tour Stand in the cafe.
DROP INS	TIME	LOCATION	DESCRIPTION
Student Life Hub	10:00-16:00	West Side Building, Foyer	Head down to the Student Life Hub to find out more from our services and how they support you during your studies. Find out more on page 7.
Information Point	10:00-16:00	East Side Building, Level 1, Cafe	Ask questions and chat with our current student ambassadors and some of our academic staff. We'll be here to assist and direct you throughout the event.
Students' Union drop in	10:00-14:00	East Side Building, Level 1, Cafe, SUSU desk	Drop in to speak to Students' Union representatives about opportunities outside your degree. Chat to them about events, clubs and societies, and how they represent you during your studies.
WSA Library	09:00-16:00	West Side Building, Level 1, Room 63K	Take a look around our on-campus library. Browse books, journals, magazines and special collections, such as Artists Books and Visionaires. Or chat with our library staff, on hand to help with any library questions.

WHAT DO OUR STUDENTS AND ALUMNI THINK?

Make sure you also ask our student ambassadors about their own university experience. Find them throughout the campus and on guided tours.

“My favourite part about being a WSA student is the big studio spaces here, with new technologies to help you get ready for the industry. There is so much help for students in all aspects, lecturers are happy to help with anything and are understanding.”

Maddie Hawkins (she/her)
Fashion Design, third year



“My advice for anyone starting their degree is to dive in head first and try any opportunities given to you. You can take advantage of different societies available for students, where you can meet a wide range of people. You can even become a course rep and learn new skills.”

Edward Lam (he/him)
Games Design and Art, 2023

“I love the size of the campus and the balance between the course being creative and academic. I also really enjoy my course modules because I can easily identify how the work we do will be applied in the fashion industry.”

Molly Flynn (she/her)
Fashion Marketing with Management, second year



“My best experiences were having the opportunity to make the most of all the facilities and equipment to deepen my knowledge and being surrounded by kind, knowledgeable and supportive tutors. I also think the variety of projects that assess multiple skills helped me develop my journey as a designer.”

Isabella Del Zoppo (she/her)
Fashion Design, 2018
Technical Designer, Burberry

STUDENT LIFE HUB

The Student Life Hub is the place to chat to support teams and find out all about university life, including:

- + Accommodation
- + Admissions
- + Art and Culture
- + Student Disability and Inclusion
- + Library
- + Making your money work for you
- + Student Inclusion
- + Study Abroad and Exchange
- + Wellbeing
- + Careers and Employability
- + Academic Skills Service
- + The Student Hub

Don't forget to attend our Student Life talks for more information, details can be found on **page 4**.

Try to make time to learn about clubs and societies, as they're a big part of many students' university experience.

When you join the University, you automatically become a member of the Students' Union (known as SUSU), which is independent of the University. SUSU is here to represent the voice of students at every level and ultimately make your university experience unforgettable. There's a huge variety of events and social activities that you can take part in at our main campus, Highfield, and WSA including:

- + WSA Freshers' Fair
- + Crafty workshops
- + WSA Summer Ball
- + WSA Careers Week

SUSU also has **over 350 different sports clubs and societies**. This includes **over 50 societies** in the creative industries such as:

- + Wessex Scene Magazine
- + Photographic Society
- + Hookers, Knitters and Stitchers Society
- + Games Society
- + Art Society

TOP TIP

Our SUSU representatives are located at the SUSU help desk in the cafe throughout the event to answer your questions.

“My tips for an Open Day are to make sure you write down a list of questions (for staff and students that you'll meet), take photos and walk around - either in a tour group or by yourself, it's a good way to learn the space!”

Harrison Jones (he/him)
BA Fine Art, 2023



YOUR HOME AWAY FROM HOME



Our welcoming and safe accommodation provides excellent facilities with 24-hour support and advice available, and a fantastic environment for you to make new friends and experience student life.

You can also request a:

- + quieter flat
- + no-alcohol flat
- + single-sex flat
- + to live with your friends (international and second, third and fourth-year students only)

Why live in University accommodation?

- + includes a common room, laundrette and bicycle store
- + high-speed internet in all bedrooms and communal spaces
- + frequent and good value travel options between Winchester and Southampton
- + includes cleaning of communal areas
- + all utility charges included (including contents insurance)
- + meet fellow WSA students and build your own community



YOUR PLANNER

Get the most out of your Open Day and use this planner to build your day around the events that interest you.

Time	Event	Location
10:00		
11:00		
12:00		
13:00		
14:00		
15:00		
16:00		

EXPLORE THE CAMPUS

Use this map to help you explore the campus throughout the day. Want to find out more about the facilities? Head to the information point located in the cafe. Or take a guided tour with one of our student ambassadors.



Winchester School of Art
University of Southampton
Park Avenue
Winchester
SO23 8DLT
023 8059 6900
www.southampton.ac.uk/wsa

Scan to learn more
about the campus
and facilities:



ADMIN & FASHION BUILDING

FIRST FLOOR

Main Reception
Student Office

SECOND FLOOR

Student Support
Fashion Studio 1
Fashion Studio 3

THIRD FLOOR

Fashion Studio 2

SOUTH BUILDING

FIRST FLOOR

PC Suite
Film Studio
Games Hangar

THIRD FLOOR

Creative Computing Studios / Work
Seminar Rooms 6-10
Quiet Room

WEST SIDE

FIRST FLOOR

Winchester Gallery
Seminar Rooms 1161, 1163, 1165
MA Fine Art Studio
Media Stores
Mac Suite
Photography Studios and
Image Lab

SECOND FLOOR

Library
Fashion Studio 4
Fine Art Studio
Lecture Theatre A

EAST SIDE BUILDING

FIRST FLOOR

Students' Union / Cafe
Computer Centre and
Mimaki Printing
Printmaking Workshop
MA TD Studios
Digital Fabric Printer
Creative Services Centre
Textiles Space
Fine Art Studios / Workshops

SECOND FLOOR

Mac Suite
Computer Centre 1
Assistive Technology
Lecture Theatre B
Fashion Marketing
with Management
TD Workshops
TD Studio

THIRD FLOOR

Graphic Communication Studios
Seminar Rooms
Harvard Lecture Space

-  Check-in
-  Campus Tours
-  Cafe
-  Blue Badge parking
-  Information Point
-  Assembly Point
-  Student Life Hub

**Find out more:**

www.southampton.ac.uk/wsa

UK and EU enquiries:

enquiries@southampton.ac.uk

+44 (0)23 8059 9699

International enquiries:

international@southampton.ac.uk

+44 (0)23 8059 9699



@unisouthampton



@unisouthampton



@unisouthampton



@uni_southampton



@unisouthampton

DISCLAIMER:

This document is for information purposes only and is prepared well in advance of publication. While the University of Southampton uses all reasonable efforts to ensure that all statements, information and data contained in this document are accurate as at the date of publication, it reserves the right to make revisions or modifications to such statements, information or data at any time and without notice. Under no circumstances shall the University be liable for any reliance by the reader on any information in this document.

© University of Southampton 2023

This document can be made available, on request, as an electronic version.

Correct at date of print, November 2023



**Scan to learn
more about WSA:**

