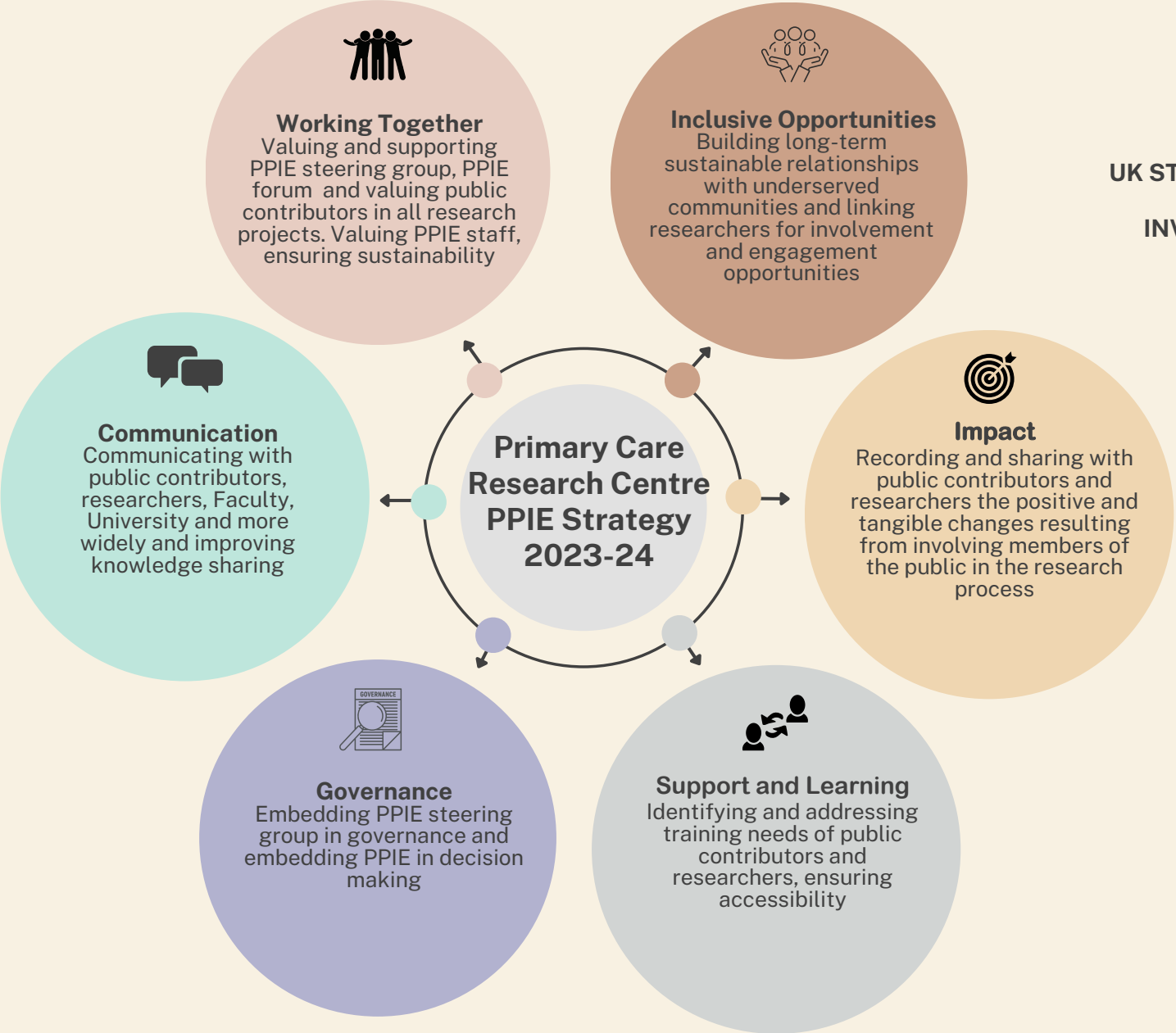


**UK STANDARDS FOR  
PUBLIC  
INVOLVEMENT**



## Southampton Primary Care Research Centre PPIE Strategy 2023-2024 - Summary

### KEY:

**PPIE** – Patient and public involvement and engagement

**PPM** – School of Primary Care, Population Sciences & Medication Education (one of 5 Schools within Faculty of Medicine, University of Southampton)

**PCRC** – Southampton Primary Care Research Centre (Research group within PPM)

### Aim 1: To address barriers to inclusive research (UK Standard Inclusive Opportunities)

Objective	Actions
Developing accessible resources and processes	To embed and promote accessible and inclusive opportunities for public involvement in research in the PCRC and PPM. Embed greater awareness of best practice in accessible opportunities and in fair, transparent processes for all researchers within the school
Building diversity in public involvement	Build systems to establish a process for assessing, recording and addressing diversity in public involvement in research in PCRC. Build long-term sustainable relationships with underserved communities to further develop processes by which researchers can link with underserved communities for involvement and engagement in a variety of research studies

### Aim 2: To work together in a way that values all contributions (UK Standard Working Together)

Objective	Actions
Valuing and supporting public contributors in all research projects	Embed shared understanding of roles, responsibilities, and expectations of public involvement for research projects, including: <ul style="list-style-type: none"><li>• Identifying who is leading public involvement for each project</li><li>• Supporting public contributors and researchers in ensuring timely and stress-free remuneration</li><li>• Supporting researchers to provide regular feedback and conversations reflecting on the role and value of the public contributor in their project</li><li>• Opportunities for public contributors to be involved in publications and presentations</li></ul>
Valuing PPIE staff	Ensure sustainability through review and management of role, workload and support for PPIE Officers

**Aim 3: To promote support and learning opportunities (UK Standard Support and Learning)**

<b>Objective</b>	<b>Actions</b>
Identifying and addressing PPIE training needs of public contributors and researchers	Continue to survey public contributors and researchers to identify training needs. Use seminars and case studies to feedback from survey and provide case studies of projects with particularly strong or innovative PPIE. Identify or develop training resources that will benefit researchers and the public, working collaboratively with partner organisations

**Aim 4: Involve public in research management, regulation, leadership, and decision making (UK Standard Governance)**

<b>Objective</b>	<b>Actions</b>
Valuing and supporting the PPIE steering group in governance	<p>Extend and embed role of core public contributors in:</p> <ul style="list-style-type: none"><li>• setting and delivering PPIE strategy</li><li>• research prioritisation and decision-making through involvement in internal funding processes</li><li>• shaping early research ideas</li><li>• representation at senior management team meetings at key points during the year</li></ul> <p>To continue to secure funding for PPIE in Research and Strategy, including remunerating public involvement and PPIE Officers' time</p>
Valuing and supporting the PPIE forum in shaping research ideas	Further promote to researchers the value of early and continuous involvement, feedback and reporting of how public contributors have shaped research ideas. We will aim for 2-3 PPIE Forum meetings a year with 2 projects presented at each

**Aim 5: To communicate with a wider audience about public involvement and research (UK Standard Communications)**

<b>Objective</b>	<b>Actions</b>
Communicating with public contributors, researchers, Faculty, University and more widely	Regular newsletters to spread best practice, identify innovative ways of working and sharing learning from PPIE work with public contributors and researchers. Develop communications strategy within PCRC for use internally and for outward facing with University, Trusts, NIHR and other key organisations

**Aim 6: To identify and share the difference that public involvement makes to research (UK Standard Impact)**

<b>Objective</b>	<b>Actions</b>
Record and share impact of PPIE	Develop strategy for researchers and public contributors to record and assess the impact of public involvement in research, both within individual research projects and the PCRC