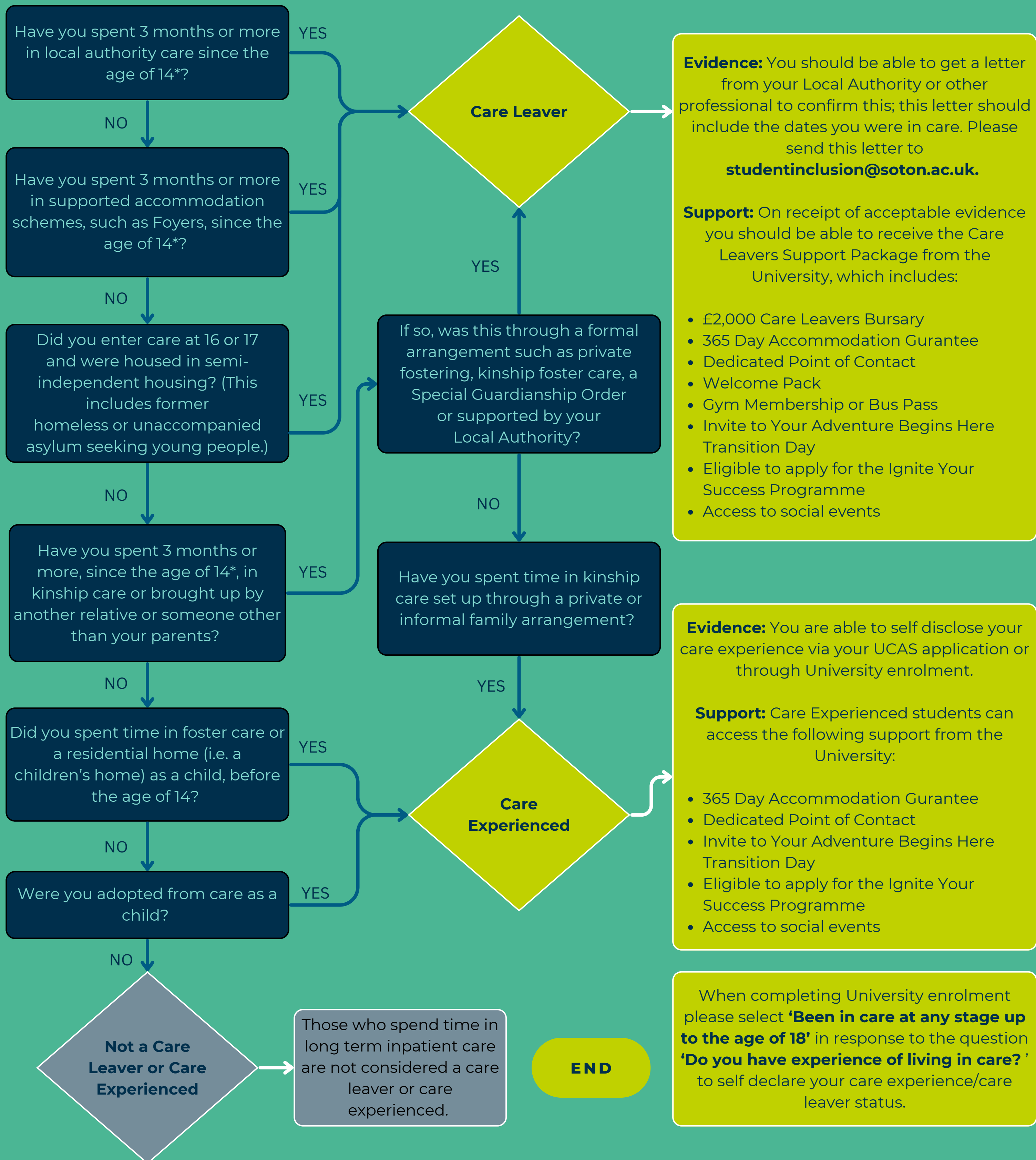


CARE EXPERIENCED & ESTRANGED STUDENT DECISION TREE

Helping you to understand whether you meet our care leaver or care experienced definitions

START



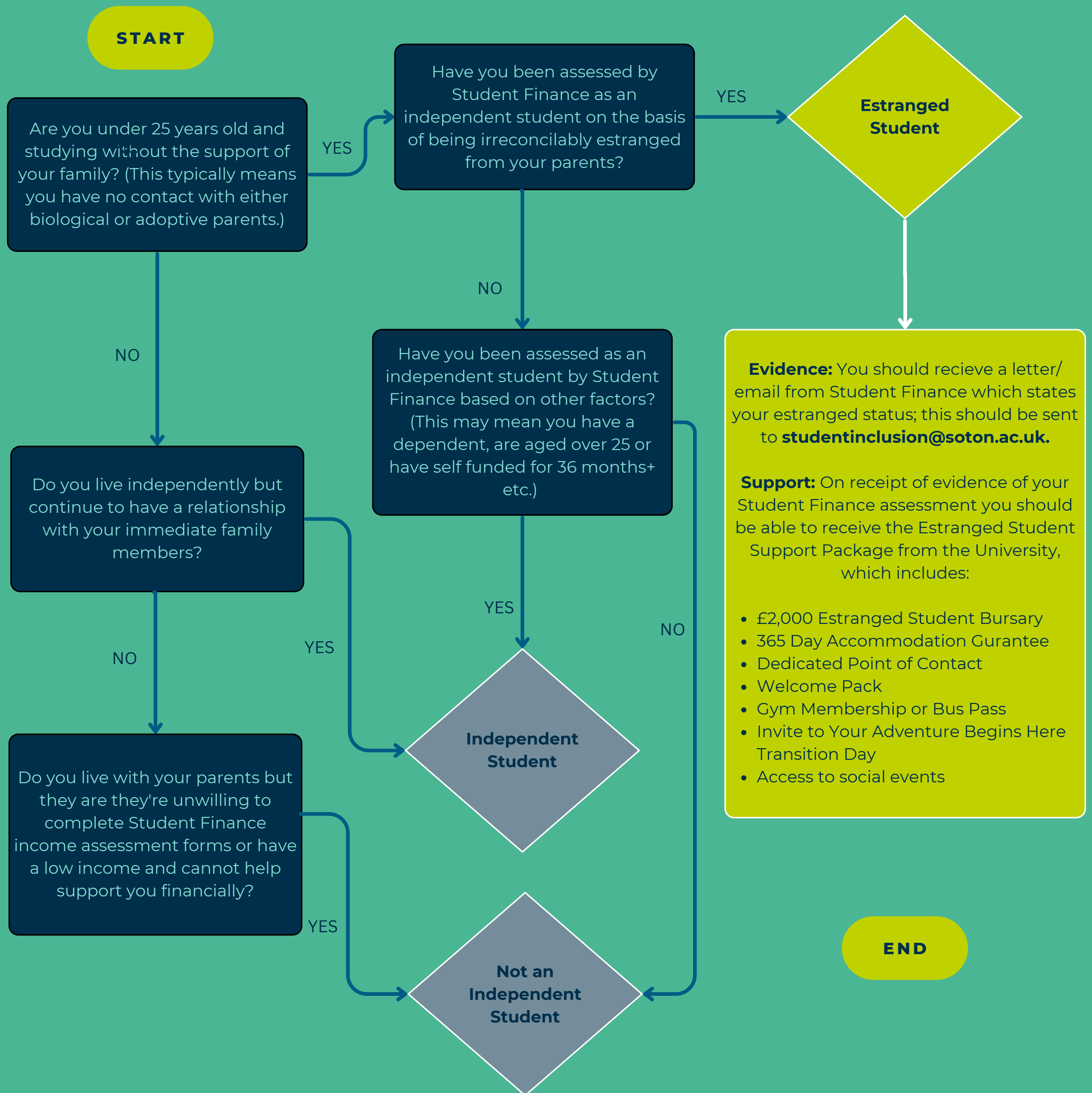
When completing University enrolment please select **'Been in care at any stage up to the age of 18'** in response to the question **'Do you have experience of living in care?'** to self declare your care experience/care leaver status.

There is **no age limit to being a Care Leaver or Care Experienced at Southampton; your time in care, up to 18 years old, could have occurred many years ago.*

*This decision tree is intended to capture the experiences of care and UoS definitions, however we appreciate that individual circumstances might not be captured. You can contact **studentinclusion@soton.ac.uk** if further clarification is needed. Please note that eligibility for the Care Leaver support package is dependent on supplying appropriate evidence; the **evidence and eligibility is at the discretion of the University**. The above reflects the **University of Southampton definitions**, other institutions and organisations may differ.*

CARE EXPERIENCED & ESTRANGED STUDENT DECISION TREE

Helping you to understand whether you meet our estranged student definition



To be defined as an Estranged Student at Southampton, **individuals must be aged 24 or under when starting their degree**. This decision tree reflects Estrangement as defined by Student Finance; individuals will need to be assessed as Estranged by Student Finance in order to be eligible for the University support package. You can contact studentinclusion@soton.ac.uk if further clarification is needed.

The above reflects the University of Southampton definitions, other institutions and organisations may differ.